

Kia Haumaru te Haere o Rotorua Hapori



TE KAUNIHERA O NGĀ ROTO
O ROTORUA

KO RURU TENEI



Kia ora,
ko Ruru tenei

He ruru a Ruru. Mēnā e tata ana, mēna kei
te huarahi rānei koe, ko tō haumarutanga
kei te taumata o ōna whakaaro.

He maha ngā momo haere a Ruru. Mā hea koe haere ai?



Pāngia tō puku, he
ngohengohe, nē?



Kāore ngā motokā i te
ngohengohe. He nui, he tere hoki
ngā motokā, ka mutu, ki te kore e
tūpato ka whara koe i te motokā.



I mōhio rānei koe he
tokomaha ngā tamariki ka
whara i te huarahi i ia tau?



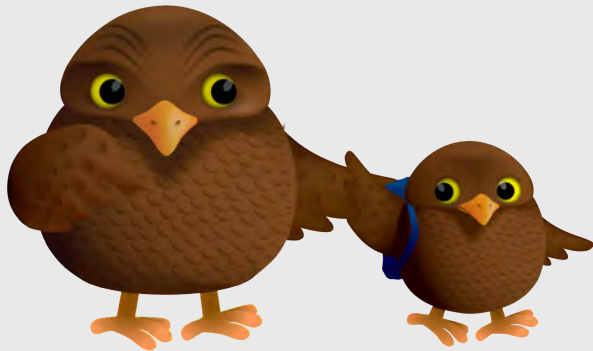
Kāore a Ruru e paku pīrangi ana kia
whara koe.

Anei tētehi rautaki e haumaru ai
koe i a koe i tō motokā, i a koe
e tata ana rānei ki te huarahi.

Whakarongo mai
tamariki. He hirahira
katoa ēnei kōrero!



Ki te haere mā raro, mā
runga pahikara, mā runga
kutarere rānei, me mātua
haere i te taha o tētehi
pakeke.



Māna koe e
whakaako kia
haumaru i te taha, i
runga hoki i te
huarahi.

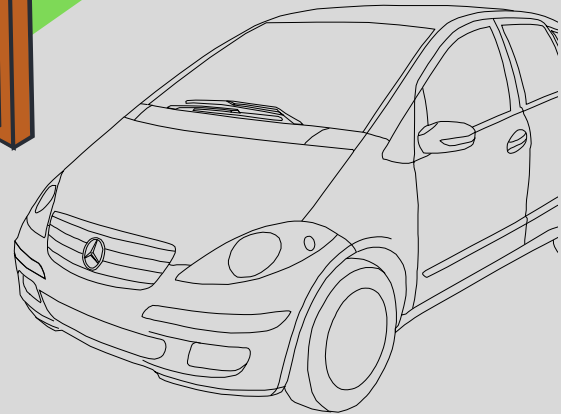
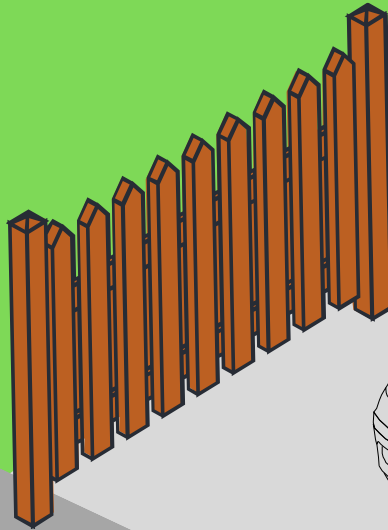


Puritia te ringa o tō kaitiaki i a
koe e tū tata ana ki ngā waka i
runga i te huarahi.

Puritia
taku ringa,
e Koro.



**KIA TŪPATO KOE I NGĀ WAKA I NGĀ
TARAIWEI I A KOE E HĪKOI ANA.**



**KI TE HIA WHAKAWHITI I TE RORI, KIA
TAU, ĀTA TIROHIA TE HUARAHI I MUA I
TŌ WHAKAWHITI.**



Tāria kia wātea rā anō te huarahi i mua i tō
whakawhiti, ā, kua hoki e wareware ki te
pupuri i te ringaringa o tētehi pakeke.

I A KOE I TE WAKA WHĪTIKINA KATOATIA NGĀ TĀNGATA I ROTO I TE WAKA



Hei konā rā.
Ki te kite koe i a au i ētehi
whakatairanga nui, ā tēnā,
pōhirihi mai.

