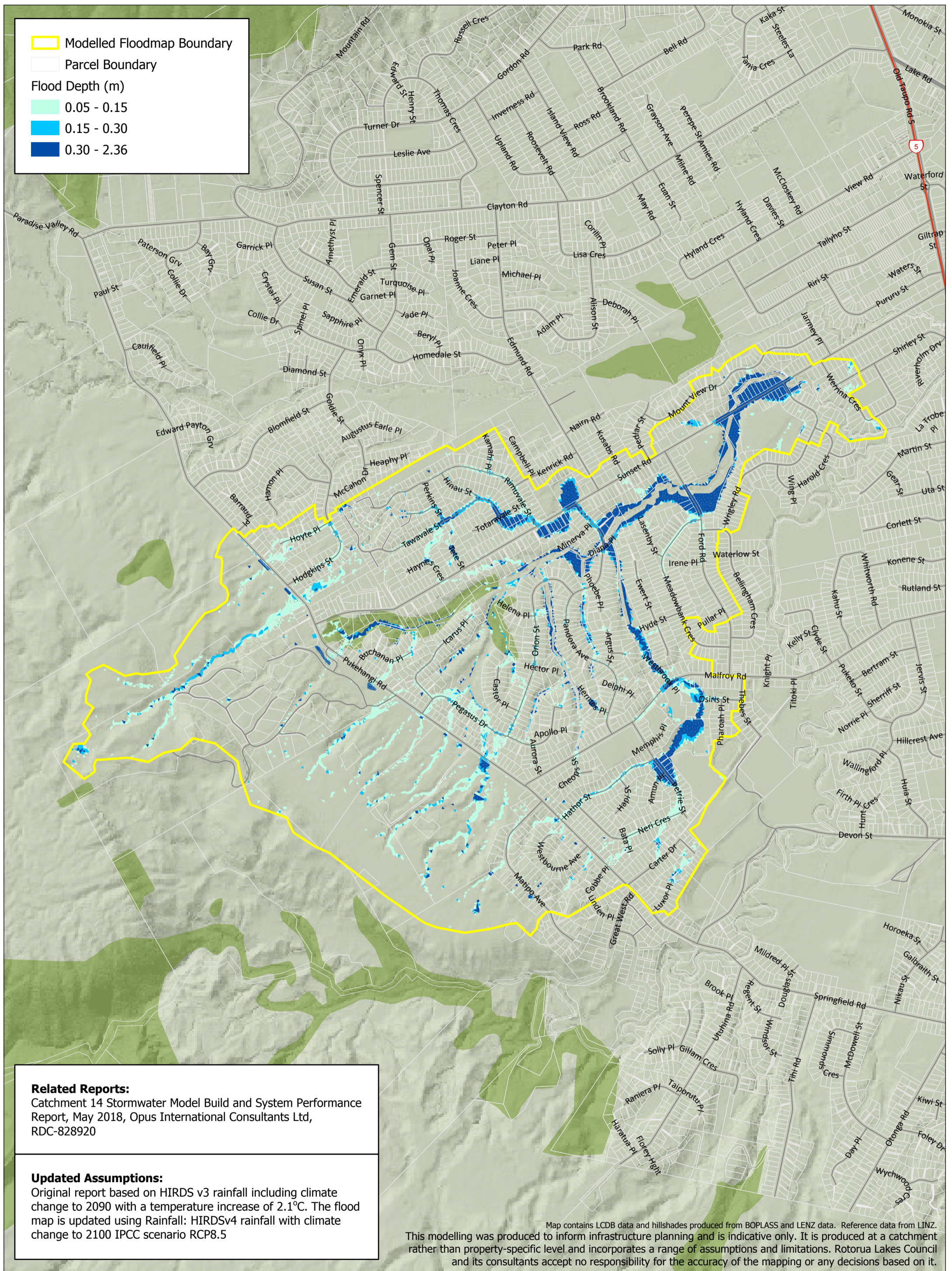


- Modelled Floodmap Boundary
- Parcel Boundary
- Flood Depth (m)
- 0.05 - 0.15
- 0.15 - 0.30
- 0.30 - 2.36



**Related Reports:**

Catchment 14 Stormwater Model Build and System Performance Report, May 2018, Opus International Consultants Ltd, RDC-828920

**Updated Assumptions:**

Original report based on HIRDS v3 rainfall including climate change to 2090 with a temperature increase of 2.1°C. The flood map is updated using Rainfall: HIRDSv4 rainfall with climate change to 2100 IPCC scenario RCP8.5

Map contains LCDB data and hillshades produced from BOPLASS and LENZ data. Reference data from LINZ. This modelling was produced to inform infrastructure planning and is indicative only. It is produced at a catchment rather than property-specific level and incorporates a range of assumptions and limitations. Rotorua Lakes Council and its consultants accept no responsibility for the accuracy of the mapping or any decisions based on it.

**Rotorua Lakes Council Catchment 14 Stormwater Modelling**  
**1% AEP Flood Depth Map with Climate Change to 2100**

NZTM 2000 Projection + Moturiki Vertical Datum 1953



**ROTORUA**  
**LAKES COUNCIL**  
 Te kaunihera o ngā roto o Rotorua