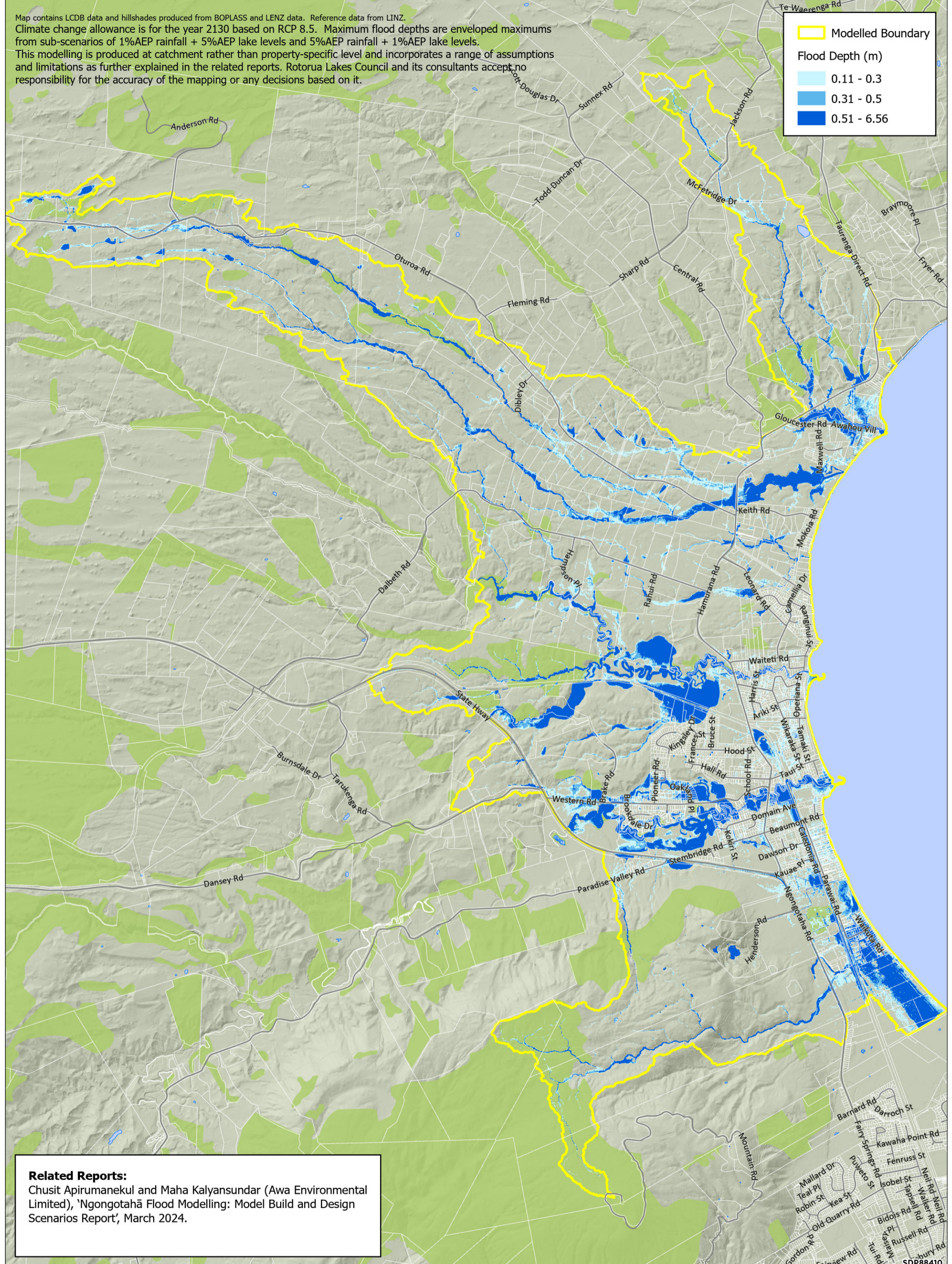
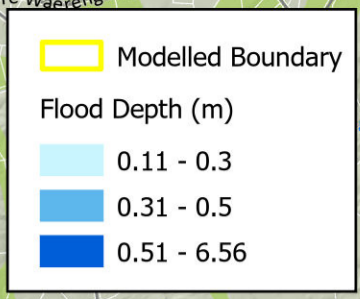


Map contains LCDB data and hillshades produced from BOPLASS and LENZ data. Reference data from LINZ.
 Climate change allowance is for the year 2130 based on RCP 8.5. Maximum flood depths are enveloped maximums from sub-scenarios of 1%AEP rainfall + 5%AEP lake levels and 5%AEP rainfall + 1%AEP lake levels.
 This modelling is produced at catchment rather than property-specific level and incorporates a range of assumptions and limitations as further explained in the related reports. Rotorua Lakes Council and its consultants accept no responsibility for the accuracy of the mapping or any decisions based on it.



Related Reports:
 Chusit Apirumanekul and Maha Kalyansundar (Awa Environmental Limited), 'Ngongotaha Flood Modelling: Model Build and Design Scenarios Report', March 2024.

Rotorua Lakes Council Ngongotaha Stormwater Modelling
 1%AEP (enveloped) future climate scenario 2130 RCP 8.5

NZTM Projection + Moturiki Vertical Datum 1953 0 250 500 1,000 1,500 2,000 2,500 Metres

ROTORUA
LAKES COUNCIL