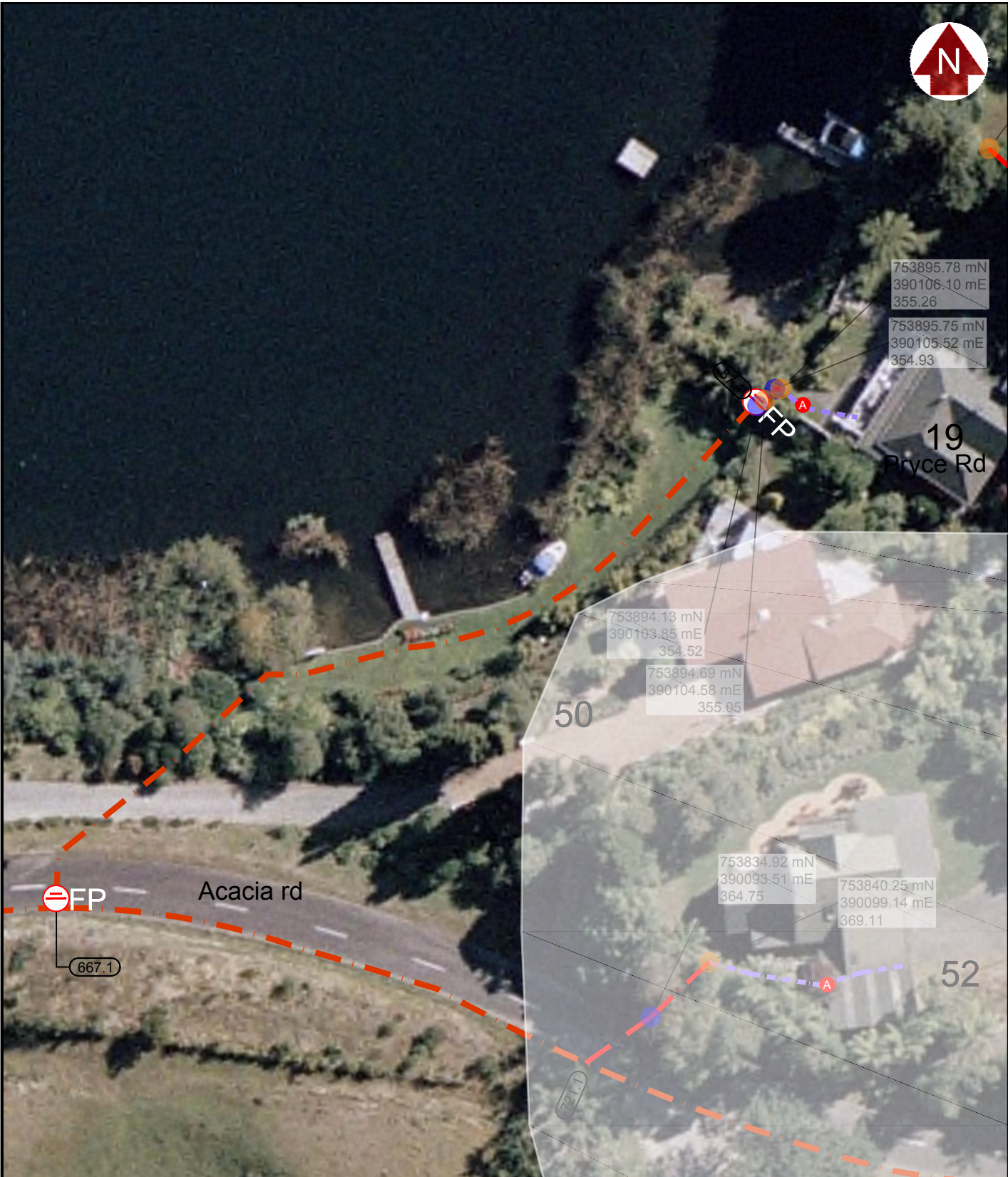


Printed: 19 Jul 2011 13:00:00 X:287.00 MM) Printed: 13 July 2011 S:\Projects\9276 Downer EDI Works - Okareka Sewer Schemes\05 CHL Drawings\9276-106-INDIVIDUAL PROPERTY FILE\DWG\9276-106-A Sheets



753895.78 mN
 390106.10 mE
 355.26
 753895.75 mN
 390105.52 mE
 354.93

753894.13 mN
 390163.85 mE
 354.52
 753894.69 mN
 390104.58 mE
 355.95

753834.92 mN
 390093.51 mE
 364.75

753840.25 mN
 390099.14 mE
 369.11

Reference

- Pressure Sewer Main
- 40mm SDR11 PN16 connection
- Electric Cable
- Flushing point
- Air Valve
- Pump Unit
- Boundary Assembly
- Alarm Panel
- Meter Box

Note: Co-ordinates are in BOP 2000
 Levels in terms of Moturiki datum

This plan has been prepared in accordance with an Agreement for the Provision of Professional Services. This plan should not be relied upon for any other purpose without reference to and approval from Canmap Hawley Ltd.
 Meter box position sourced from RDC design drawings.
 Alarm panel position plotted from Downer site diagrams.
 Existing services sourced from RDC design drawings.



ROTORUA
 PO Box 396
 PH. 07 **349 8470**
 FAX. 07 **347 6652**
www.canmaphawley.co.nz

Site No: 03 194

OKAREKA SEWER SCHEME
 SITE INSTALLATION
19 Pryce Rd

DRAWING Name:
 9276-106-A SHEETS 221-230
 Scale @ A4 1:500
CHECK BEFORE YOU DIG