



Te Arawa River Iwi Trust and Rotorua Lakes Council Co-Governance Committee Agenda

Meeting will be held in Rotorua Lakes Council,
Council Chamber
Thursday 12 October 2023
Commencing at 10:30am

[Back to index](#)

Te Arawa River Iwi Trust and Rotorua Lakes Council Co-Governance Committee

Co-Chair	Mayor Tapsell
Co-Chair	Trustee Deliah Balle
Te Arawa River Iwi Trust	Board Chair Evelyn Forrest Trustee Peri Marks
Rotorua Lakes Council	Cr Kai Fong Cr Kereopa Cr Wang
Te Arawa River Iwi Trust Staff	Jo Ireland (Chief Executive Officer) Nuki Nicholson (Environmental Manager & Key Relationships Manager) Mardi Taiaroa (TARIT Board Secretary)
Rotorua Lakes Council Staff	Kingi Biddle (Pūkenga Mātauranga Māori) Aneta Morgan (Kaiurungi, Ohu - Te Amorangi) Kihi Tawhai (Engagement and Relationship Specialist) Simon Thurston (Senior Policy Planner) Damon Mathfield (Urban Development Principal Strategic Advisor) Kahurangi White-Parsons (Partnership Advisor) Robert Griffith (Democracy and Governance Advisor)
Quorum	Four members, consisting of two from each organisation one of which must be a Co-Chair

[Back to index](#)

Te Arawa River Iwi Trust and Rotorua Lakes Council Co-Governance Committee

- REPORTING TO:** Te Arawa River Iwi Trust and Rotorua Lakes Council
- CONSTITUTION:** Four (4) elected members appointed by Rotorua Lakes Council; and four (4) Trustees appointed by Te Arawa River Iwi Trust. Both organisations have the ability to appoint alternate members to the Co-Governance Committee. The alternatives will have full voting rights in the absence of the member they are representing. The Co-Governance Committee will be Co-Chaired by a member of each organisation.
- QUORUM:** Four (4) made up of two (2) members from each organisation one (1) of which must be a Co-Chair.
- MEETING FREQUENCY:** Annually (or more often if agreed)
- OBJECTIVE:** To give effect to the guardianship provisions as provided for pursuant to clause 5 of the Joint Management Agreement between the organisations.

SCOPE OF ACTIVITY:

1. This JMA covers matters relating to the Waikato River and activities within its catchment affecting the Waikato River within the Rotorua Lakes Council boundary and the rohe of Te Arawa River Iwi – Ngāti Tahu-Ngāti Whaoa, Ngāti Kea-Ngāti Tuarā and Tūhourangi.

PURPOSE:

1. Outlines how the parties will work together around monitoring and enforcement functions, matters pertaining to the RMA 1991 and consideration of applications for resource consents

SUPPORT FOR THE CO-GOVERNANCE COMMITTEE:

1. The venue for the meetings will alternate between the offices of the Te Arawa River Iwi Trust and those provided by the Rotorua Lakes Council.
2. Both organisations will provide secretarial support for the Co-Governance Committee alternating agenda and minute duties.
3. Minutes will be approved by the Co-Chairpersons prior to circulation which will be within a fortnight of the meeting.
4. The Co-Chairs will be the spokespersons for the Co-Governance Committee.

TECHNICAL SUPPORT

1. The Co-Governance Committee may invite staff members from both organisations to attend the meetings for technical support.

REFERENCE DOCUMENT

1. Joint Management Agreement between Te Arawa River Iwi Trust and Rotorua Lakes Council.
(Attachment 1 - Distributed separately)

Order of Business

1	Opening karakia - Karakia whakapuaki	5
2	Apologies - Ngā whakapāha	5
3	Confirmation of Minutes – Te whakaū i ngā meneti	6
3.1	TARIT & RLC Co-Governance meeting minutes (draft) 20 July 2023	6
4	Matters arising from previous minutes - Ngā take kua puea ake i ngā meneti	16
4.1	Matters from TARIT & RLC Co-Governance meeting 20 July 2023	16
5	Te Arawa River Iwi Trust updates	16
5.1	Review of Te Arawa River Iwi Trust/RLC JMA 2023	16
5.2	Corbicula Fluminea (Invasive Gold Clam) – Jo Ireland	16
6	Rotorua Lakes Council updates	16
6.1	Long Term Plan Update – Kihī Tawhai	16
6.2	Plan Change 9 Update – Simon Thurston	16
6.3	Future Development Strategy Update – Damon Mathfield	16
6.4	Infrastructure Strategy Update – Kahurangi White-Parsons	16
7	General Business – Ngā take atu anō	16
7.1	Closing comments from the Co-Chairs	16
8	Closing Karakia - Te Karakia Whakamutunga	16

1 Opening karakia - Karakia whakapuaki

2 Apologies - Ngā whakapāha

The Chairperson invites notice from members of apologies, including apologies for lateness and early departure from the meeting.

[Back to index](#)

3 Confirmation of Minutes – Te whakaū i ngā meneti

3.1 TARIT & RLC Co-Governance meeting minutes (draft) 20 July 2023

ID 19938029



**MINUTES (DRAFT) OF TE ARAWA RIVER IWI TRUST & ROTORUA LAKES COUNCIL
CO- GOVERNANCE COMMITTEE MEETING
HELD ON THURSDAY, 20 July 2023 AT 1pm**

CO-CHAIRS	Mayor Tania Tapsell Trustee Deliah Balle
TE ARAWA RIVER IWI TRUSTEES PRESENT:	Trustee Cedric Forest Trustee Deliah Balle
ROTORUA LAKES COUNCIL MEMBERS PRESENT: IN ATTENDANCE:	Cr Kereopa Cr Maxwell
TE ARAWA RIVER IWI TRUST STAFF IN ATTENDANCE:	Jo Ireland (Chief Executive), Nuki Nicholson (Environmental Manager & Key Relationships Manager) Mardi Taiaroa (Board Secretary) Maxeen Newton (Matauranga Māori Freshwater Advisor) Zoe Mackness (Matauranga Māori Freshwater Co-ordinator), Lucky Ruha (Matauranga Māori Freshwater Co-ordinator)
ROTORUA LAKES COUNCIL STAFF IN ATTENDANCE:	Gina Rangī (Manahautū Māori) Clark Pirika (Te Arawa Partnerships Manager) Damon Mathfield (Principal Strategic Advisor – Urban Development) Isabel Brell (Governance Support Advisor)
APOLOGIES	Evelyn Forrest, Peri Marks, Geoff Williams, Kingi Biddle

[Back to index](#)

The meeting opened at 1.02pm.

1. WELCOME

Cr Maxwell opened the meeting with a Karakia and Mihi.

The meeting commenced with a round of table introductions from the attendees.

2 APOLOGIES

Resolved

That the apologies from Evelyn Forrest, Peri Marks, Geoff Williams and Kingi Biddle be accepted.

Moved: Mr Forrest

Seconded; Cr Kereopa

CARRIED

3. CONFIRMATION OF MINUTES

Resolved:

That the minutes of the TARIT and RLC Co-Governance committee meeting held 18 May 2022 be confirmed as true and correct.

Moved: Ms Balle

Seconded: Mayor Tapsell

CARRIED

4. MATTERS ARISING FROM THE PREVIOUS MINUTES

There were no matters arising from the previous minutes.

5. TARIT UPDATES

5.1 Jo Ireland introduced the item 5.2 Te Mana Te Wai project and explained funding is received from the Ministry for the Environment (MFE) to work with the collective Iwi to increase the water monitoring capacity of the awa.

5.2 Te Mana o Te Wai Presentation

Maxine Newton, Lucky Ruha and Zoe Mackness introduced themselves and spoke to a presentation. Comments relating to this item included the following:

- Goal is to have 20 iwi members trained to pathway back to the affiliates, Councils' and TALT.
- Partnership and training opportunities available for Councils' and Iwi.
- Assessment of Mahinga Kai; reconnection to the awa and sustaining access to the awa for future monitoring.
- Impact of climate change.

[Back to index](#)

- Organise local Wānanga.

6 RLC PROJECT UPDATES

6.1 Future Development Strategy

Damon Mathfield spoke to a presentation (Attachment 2) and provided an update with comments from Gina Rangī, which included the following:

- Plan Change 9 proposes changes to the District Plan to enable medium density living across the urban area.
- Responsibility on Council to capture iwi aspirations and respond through the FDS. Iwi to lead internal discussions and integrated approach.
- Relaxing rules around Papakāinga.
- Iwi to develop their own integrated response.
- Engagement with Mana Whenua occurred prior to the public engagement process, followed by hearings and deliberation, with adoption on October.

6.3 3 Waters Reform

Gina Rangī provided an update:

- Proposal now for 10 entities – Rotorua is included with Kawerau, Opotiki, Whakātane, Tauranga City and Western Bay of Plenty District.
- Commencement date not yet confirmed. The roll out will be staggered.
- Continue to support Department of Internal Affairs (DIA) with information to enable an effective transition.
- Planning, budgeting and repair work continues.
- DIA needs to approve any significant decisions concerning 3 Water functions.

Action Point

- 1. RLC to provide an overview of the data held of status of marae infrastructure.**
- 2. RLC and TARIT to ensure the new entities have a strategic focus of the needs of marae.**

Butchers Pool update

Gina Rangī provided an update:

- A Hui was held to identify community priorities.
- Evelyn Forrest assisted in the facilitation.
- Feedback collected on Butchers Pool site as well as other Council recreational and environmental sites will determine the level of investment over the next 10 years LongtTrm Plan.
- There has been on-going concern with the level of service at the pool provided by InfraCore.

6.2 Long Term Plan awareness and Infrastructure Strategy

Gina Rangī provided an update:

- A Long Term Plan (LTP)

[Back to index](#)

- is produced every 10 years and outlines the activities Council will undertake; the community outcomes for the district and coordinates the planning and resourcing for the long-term.
- The LTP has to include a 30-year Infrastructure Strategy. This strategy will be undertaken assuming Council is responsible for the assets. However if the 3 Waters reform proceeds the new entity will be responsible.
- The LTP is reviewed every 3 years.
- The next 10-year period to be reviewed is 2024 and there will be a community consultation process undertaken prior to adoption of the new plan.

Mayor Tapsell advised that the Infrastructure Strategy will also be partnered with a 30 year Environmental Plan for the first time.

Ms Rangi confirmed Council was not aware of any District Plan changes or council consents in the area of the Waikato River catchment.

7. General Business

There were no items of General Business Items.

7.1 Closing comments from Co-Chairs

Deliah Balle said recently some Te Arawa Iwi have completed their Te Mana o Te Wai, which have been officially presented. There is more involvement by Iwi in the areas of policy, legislative and planning requirements.

Mayor Tapsell acknowledged the work being undertaken by TARIT. Mayor Tapsell said there is an opportunity to get the planning right and the necessary actions to ensure positive change that reflect community aspirations.

8. Karakia Whakamutunga

Mr Forrest thanked everyone for attending the meeting and closed the meeting with a Karakia.

Meeting closed at 2.26pm

SUMMARY OF ACTION POINTS
from TARIT and RLC Co-Governance meeting held 20 July 2023

Item No	Subject	For action by	updates	Status
6.3 (Page 3)	RLC to provide an overview of the data held of status of marae infrastructure	RLC		In progress
6.3 (Page 3)	RLC and TARIT to ensure the new entities have a strategic focus of the needs of marae.	RLC & TARIT		On going

[Back to index](#)



ROTORUA
LAKES COUNCIL

ROTORUA'S FUTURE DEVELOPMENT STRATEGY

TARIT and RLC Co-Governance Committee meeting | 20 July 2023

WHAT IS THE FDS?

Future Development Strategy

- Our long term (30-year) plan for managing growth and change
- Location of business & residential growth & infrastructure required
- Reviewed every 3 years
- Informs other plans and strategies
- Signals direction of growth



ROTORUA
LAKES COUNCIL


[Back to index](#)

Rotorua District Residential Population


■ 1996-2013 ■ 2013-2020 ■ 2020-2021

Stats NZ Estimated Residential Population, at 30 June


GROWTH & CHANGE




+ 9,740 homes
by 2050



+ 9,320 jobs
by 2050



Improve housing
affordability



+ 50 ha new
industrial land
by 2050

PRE-ENGAGEMENT TO DEVELOP FDS

Extensive to ensure understanding all proposed planning changes
in relation to: PC9 (Incl. MDRS) & FDS

10

Iwi & hapū
workshops & one-
on-one
discussions

6

Workshops with
community groups,
developers, consultants
& students

2

District-wide
workshops with
Mana Whenua

9

Technical meetings
with key government
departments &
agencies

20

One-on-one discussions
with businesses,
developers, consultants,
community interest
groups, infrastructure
providers &
neighbouring Councils

1

Lecture series
(with open days)
at Rotorua
Library

[Back to index](#)

Document Set ID: 20005326
Version: 14, Version Date: 11/10/2023



WHAT WE SHOULD CONSIDER

- Culture* - influence how our communities grow
- Choice* - housing choice to meet needs
- Access* - easily access jobs, services, education and quality open spaces
- Connection* - inner city is our social and economic hub supported by centres
- Prosperity* - a strong economy will provide opportunities
- Environment* - committed to protecting & enhancing our environment
- Resilient* -resilient to the effects of climate change & significant natural hazards
- Investment* -investment in safe and reliable infrastructure

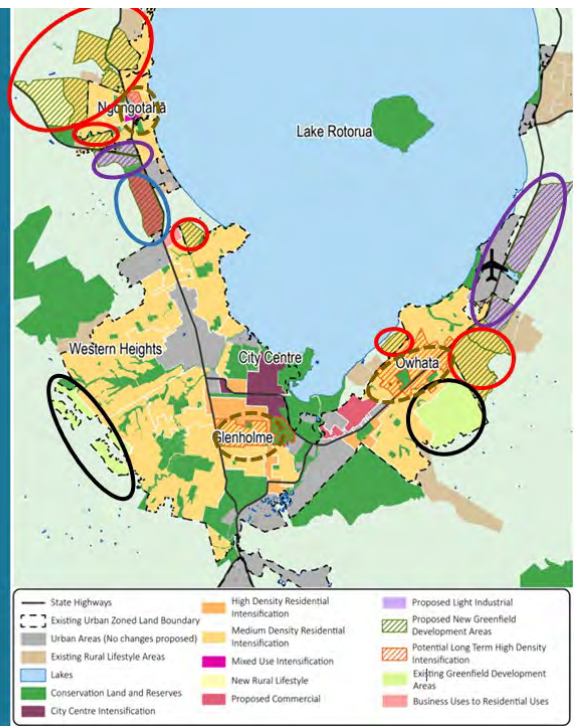
THE DRAFT STRATEGY

Residential

- Intensification (MDRS + PC9)
- Long term Intensification
- Existing residential Greenfield
- New residential Greenfield

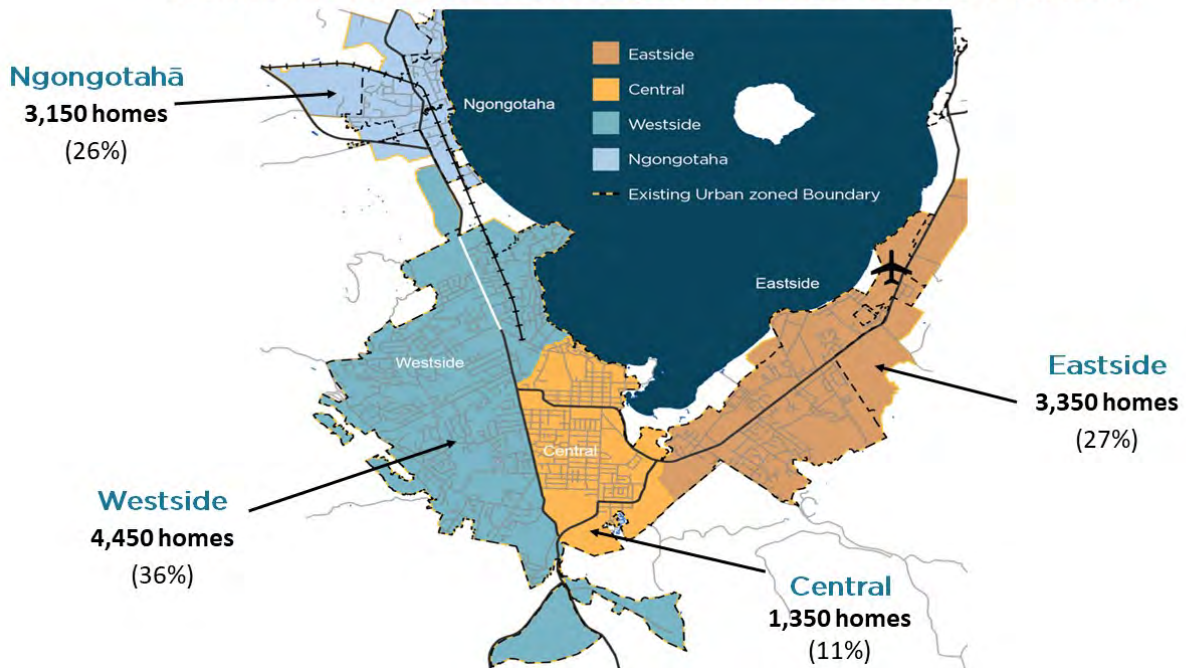
Business

- New Business (Commercial) Greenfield
- New Business (Light Industrial) Greenfield

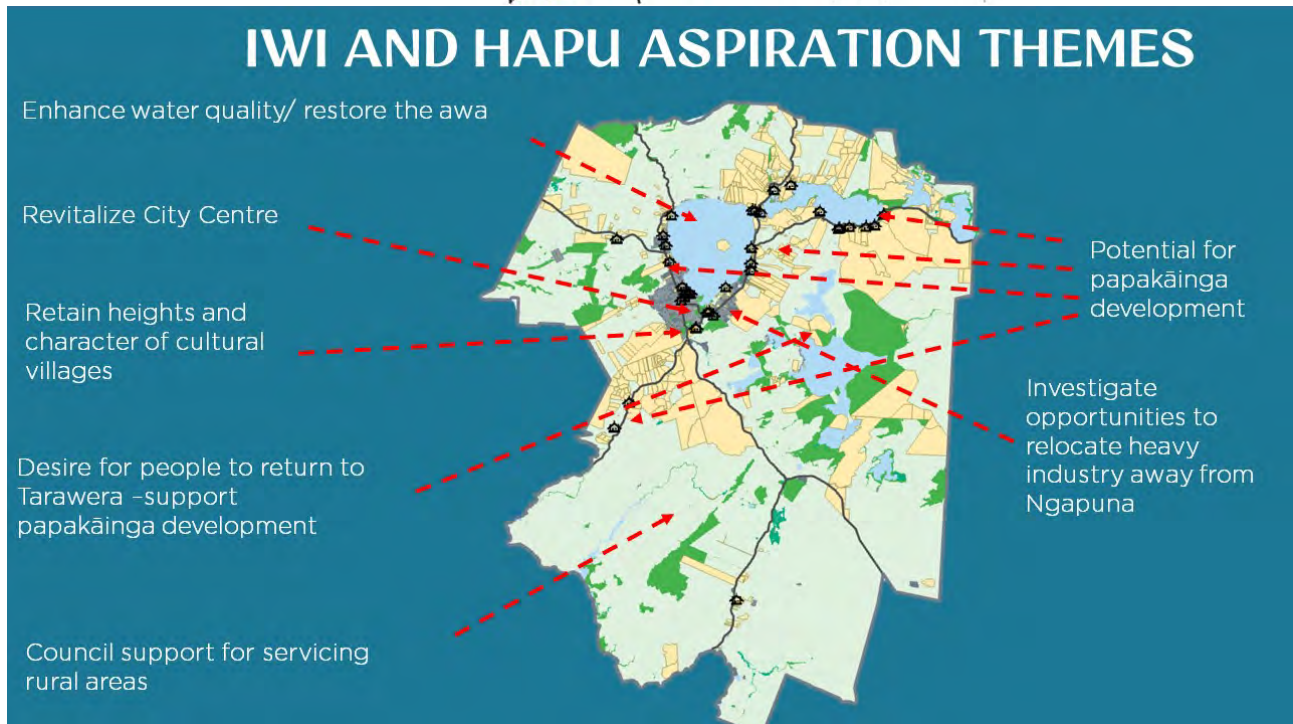


[Back to index](#)

RESIDENTIAL CAPACITY DISTRIBUTION (BY AREA)



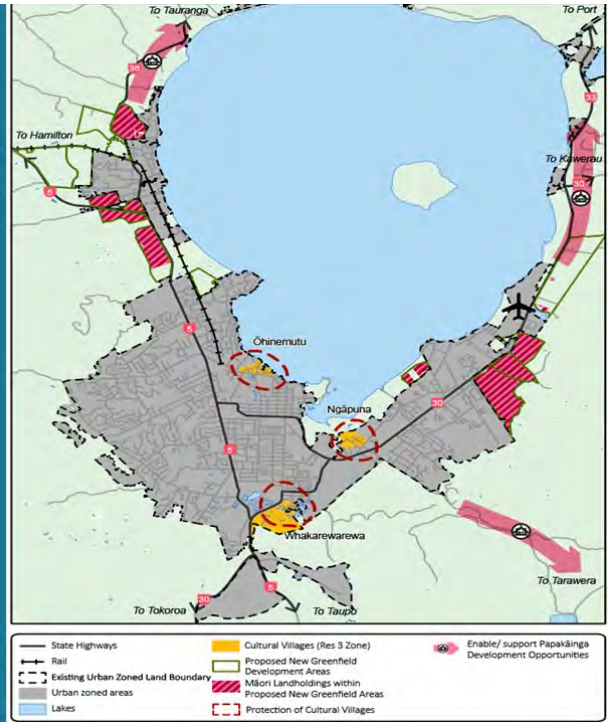
IWI AND HAPU ASPIRATION THEMES



[Back to index](#)

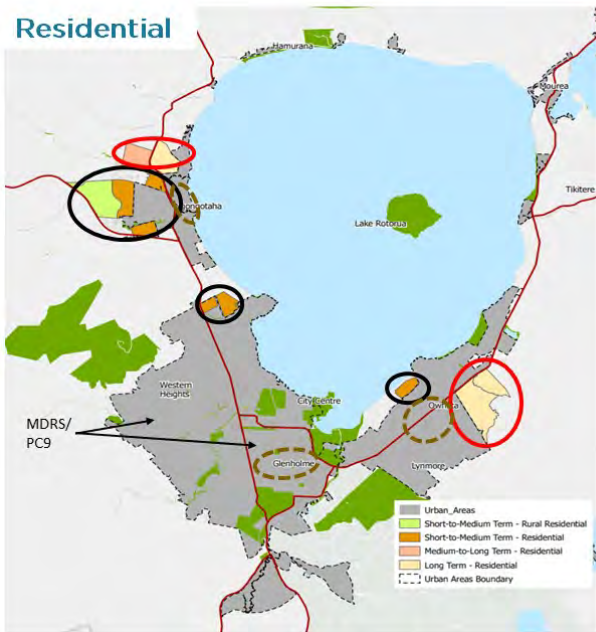
STRATEGY TO ACCOMMODATE GROWTH

- New growth areas
- Areas to protect
- Providing support

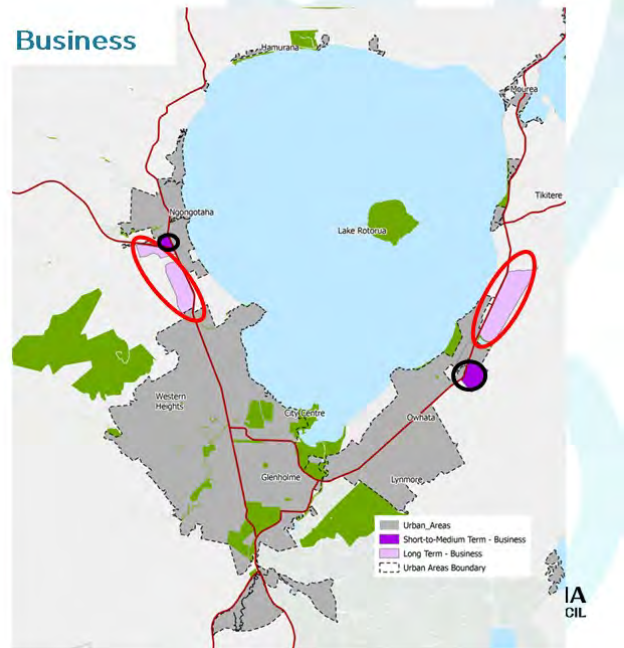


IMPLEMENTATION

Residential



Business



[Back to index](#)

4 Matters arising from previous minutes - Ngā take kua puea ake i ngā meneti

4.1 Matters from TARIT & RLC Co-Governance Committee meeting 20 July 2023

5 Te Arawa River Iwi Trust updates

5.1 Review of Te Arawa River Iwi Trust/RLC JMA 2023



Mahere Whakatinana - JMA Implementation Plan 2023-2024

I rere atu te Awa o Waikato me ōna wāhanga katoa – wai mai, tahataha mai, whakatakere mai (me ngā ōpapa ō raro), awaawa mai, arawai mai, kautawa mai, roto mai, otaota mai, whenua waipuke mai, kūkūwai mai, moutere mai, waipuna mai, wai āriki mai, wai tīwae mai, āngi mai, manawa whenua mai, mauri mai hoki, i Ruapehu ki te Pūaha o Waikato. Ko te Awa o Waikato me ōna wāhanga he taonga ahurea, he taonga tuku iho, he taonga papatipu, he taonga wairua hoki ki ngā iwi o Ngāti Tahu-Ngāti Whaoa, Ngāti Kearoa-Ngāti Tuara rātau ko Tūhourangi-Ngāti Wahiao

Ko Te Whakakitenga: Ka tautokohia ngā Iwi-ā-Awa o Te Arawa – takitahi mai, takitini mai hoki, kia hiki ake ai tō rātau Mana Awa; kia whai ora hoki ai te Awa o Waikato me ōna wāhanga katoa.

The Waikato River flows from its source on Ruapehu to Te Puaha o Waikato (the mouth) and includes its waters, banks and beds (and all minerals under them) its streams, waterways, tributaries, lakes, fisheries, vegetation, flood plains, wetlands, islands, springs, geothermal springs, water column, airspace, substratum and mauri. The Waikato River and its catchment is a resource of great cultural, historical, traditional and spiritual significance to the people of Ngāti Tahu-Ngāti Whaoa, Ngāti Kearoa-Ngāti Tuara and Tūhourangi-Ngāti Wahiao.

The Vision is: To support Te Arawa River Iwi collectively and individually to assert mana awa and improve the health and wellbeing of the Waikato river, tributaries and environs.

[Back to index](#)

Whāinga Matua #1 – Shared Strategic Goal #1		Mana Taiao: Ka whakarauorahia ka whakahaumarutia hoki te Awa o Waikato me ōna wāhanga katoa The Waikato River, tributaries and environs are restored and protected.				
Ngā Putanga – Shared Expected Outcomes	Ngā Whāinga Tuatahi – Priorities	#	Ngā Rerenga Mahi - Actions	Kaea - Lead TARIT	Kaea – Lead RLC	Wā Whakatinana - Timeframe
Ka mahi ngā Iwi-ā-awa o Te Arawa i te ara whakarite Whakaaetanga-Rawa- Taiao e pā ana ki te awa. Te Arawa River Iwi Trust (TARIT) participate in all relevant Resource Management decision-making that may have an impact on the river.	Resource Consent Applications received by RLC	1	RLC notifies TARIT & any affected affiliate early, who respond within 5 working days	Environment & Key Relationships Manager (EKRM)	Team Lead Consent (TLC)	Ongoing
	RLC resource consent applications in the area of interest	2	Maintain shared register; report at Co-Gov Hui	EKRM	TLC	Report: 2x a year
		3	Pre-application consultation occurs for all relevant RLC resource consent apps	EKRM	Capital Progs Manager (CPM)	Ongoing
		4	Maintain shared register; report at Co-Gov Hui	EKRM	CPM	Report: 2x a year
	Relevant District Plan and RMA Policy changes or development	5	RLC engages early with TARIT & any affected affiliate who respond in agreed time frame	Policy Analyst (PA)	Team Lead - RMA (TLR)	Ongoing
		6	TARIT is updated with outcome	PA	TLR	As agreed
	Relevant Reserve Management Plans	7	Determine in consultation with TARIT & any affected affiliate a programme for Reserve Management Plan reviews for all relevant reserves	EKRM	Sports & Rec Manager	Ongoing

Whāinga Matua #2 – Shared Strategic Goal #2		Mana Tangata: Mā te tangata te Awa o Waikato e whakarauora e whakahaumaru People participate in the restoration and protection of the Waikato River				
Ngā Putanga – Shared Expected Outcomes	Ngā Whāinga Tuatahi – Priorities	#	Ngā Rerenga Mahi - Actions	Kaea - Lead TARIT	Kaea – Lead RLC	Wā Whakatinana - Timeframe
He pai te tūhonotanga o TARIT me RLC TARIT and RLC enjoy a strong relationship.	Co-governance relationships	8	Co-Gov Hui held 2x year	EKRM	Team Lead TAU (TLT)	Hui: 2x a year 1 st hui 20/07/23 2 nd hui 12/10/23
		9	TARIT Affiliate hosts Co-Gov hui, hui to start with host affiliate overview on its own key projects	EKRM & Host Affiliate	TLT	As immediately above

[Back to index](#)

	Executive mngt relationships	10	Executive hui held 2x year	CEO	CEO	Hui: 2x a year
	Staff relationships	11	Lunch-box sessions (including IEMP presentation) held. Operational hui held as necessary. Affiliates are invited to attend	EKRM	RLC Team Leads	Ongoing
Ka mahi tahi a TARIT me RLC kia rahi ake te nama ā ngā tāngata tautoko. TARIT and RLC undertake joint work projects that result in wider people participation.	Roading and Location bilingual signage project	12	Identify all signs in the area for Reo Rua TARIT to consult affected affiliates on signage that promotes history or cultural significance.	EKRM	Transport Services Manager (TSM)	ongoing
		13	Agree on processes for sign changes	EKRM	TSM	tbc
		14	Sign changes entered RLC work plan, TARIT is updated.		TSM	Ongoing

Whāinga Matua #3 – Shared Strategic Goal #3	<p>Mana Mātauranga: Ka whaiwhakaarohia ngā mātauranga katoa i te whakarauoratanga me te whakahaumarutanga o te Awa All mātauranga is recognised, respected and enhanced in the restoration and protection of the Waikato River</p>					
Ngā Putanga – Shared Expected Outcomes	Ngā Whāinga Tuatahi – Priorities	#	Ngā Rerenga Mahi - Actions	Kaea - Lead TARIT	Kaea – Lead RLC	Wā Whakatinana - Timeframe
Ka mahitahi i te mahi Mahere Ahurea. TARIT Iwi and RLC collaborate on Cultural Mapping.	River Iwi Rohe, AOI, Sig Sites & Stat Ackmts are accurately mapped	15	Cultural Mapping Project Stage 1 – AOI & Stat Acknowledgements, is completed	EKRM	Kairangahau Māori	Ongoing
Ka tohaina e TARIT me RLC ō rāua pukenga, ō rāua mātauranga ki a rāua Skills and knowledge transmission occurs between TARIT and RLC.	Training opportunities	16	TARIT and RLC share education and training opportunities. TARIT will share with affiliates	EKRM	TLT	Ongoing
	Work placements	17	Investigate possible inter-org work placement opportunities	EKRM	TLT	tbc
	Information sharing	18	Hui as required; contacts kept updated	EKRM	TLT	Ongoing
		19	Early engagement with TARIT & any affected affiliate who respond within agreed time frame	PA	Partnership Advisor (PAd)	Ongoing
RLC Corporate Plans	20	RLC updates all with the outcome	PA	PAd	As agreed,	

[Back to index](#)

5.2 Corbicula Fluminea (Invasive Gold Clam) – Jo Ireland

MORNING TEA BREAK

6 Rotorua Lakes Council updates

- 6.1 Long Term Plan Update – Kihi Tawhai
 - 6.2 Plan Change 9 Update – Simon Thurston
 - 6.3 Future Development Strategy Update – Damon Mathfield
 - 6.4 Infrastructure Strategy Update – Kahurangi White-Parsons
-

7 General Business – Ngā take atu anō

- 7.1 Closing comments from the Co-Chairs
-

8 Closing Karakia - Te Karakia Whakamutunga