

# ROTORUA-TATAU TATAU

Our people, our culture, our place, our Rotorua

Issue 10 | December 2019



## IN THIS ISSUE:

Meet our elected members

Schools take sustainability lead

Community Constable on the beat

Project updates

COVER STORY:

Forging positive partnerships

**ROTORUA  
LAKES COUNCIL**

Te Kaunihera o ngā Roto o Rotorua

# SEASON'S GREETINGS

Rotorua Lakes Council will be closed from midday Friday 20 December 2019 to Monday 6 January 2020.

Services such as water, rubbish and recycling, noise and animal control will operate as normal.

Holiday hours for Council services will be available at [rotorualakescouncil.nz](http://rotorualakescouncil.nz) from 15 December.

Any questions or urgent issues can be phoned through to the council (24 hours, 7 days) on 07 348 4199.

**No rubbish and recycling collection on Christmas Day**

**If your usual collection day falls on December 25, 26 or 27, your collection day will move to the following day.**

See the table below for your Christmas week changes

Normal collection day	Christmas week collection day
Monday 23 December	No change
Tuesday 24 December	No change
Wednesday 25 December	Thursday 26 December
Thursday 26 December	Friday 27 December
Friday 27 December	Saturday 28 December

Collections will return to normal the following week (30 December – 3 January).

Check your collection day at [rotorualakescouncil.nz/rubbish](http://rotorualakescouncil.nz/rubbish)

If you:

- ! have any questions or concerns about rubbish and recycling collections
- ! see illegal dumping
- ! see an overflowing bin or litter

Please call Rotorua Lakes Council on 07 348 4199 (24/7).

Te kaunihera o ngā roto o Rotorua,  
Rotorua Lakes Council,  
Civic Centre,  
1061 Haupapa Street,  
Rotorua

Private Bag 3029,  
Rotorua Mail Centre,  
Rotorua 3046

07 348 4199

[rotorualakescouncil.nz](http://rotorualakescouncil.nz)

Find Rotorua Lakes Council on:



Welcome

# MIHI FROM THE MAYOR

E ngā iwi puta noa i tō tatau rohe  
o Rotorua, tēnā tatau,

The new council term is underway following the local body elections and we have some new faces around the table set to bring new and different thinking, perspectives and skills.

This diversity will be important as we set about to tackle some of the challenges we face as a district – challenges like growth, climate change, housing, the inner city and community safety and wellbeing. Elected members have been considering these as part of an induction programme aimed at helping us set our priorities for the next three years. After following the direction set by the district's 2030 vision for the past six years we now also need to start considering looking further ahead and taking that out to 2050.

So while much has been achieved there is more to be done and we will be seeking the community's ideas and feedback as we work through that.

One thing that won't change will be the focus on partnerships. This approach has been key to Rotorua's progress and successes to date and will continue to be vital in finding local solutions for our community. Good leadership will also continue to be important and with this in mind I have re-appointed Councillor Dave Donaldson as my deputy mayor. He has my full confidence in this role.

Cr Merepeka Raukawa-Tait will again chair the Strategy, Policy & Finance Committee with Cr Sandra Kai-Fong her deputy, and Cr Tania Tapsell will chair the Operations & Monitoring Committee she has been deputy chair of, with Cr Mercia Yates as her deputy.

We have a great team committed to making a difference for our community and things will get underway in earnest in the new year when our priorities and plan are in place.

In the meantime, I hope that, like myself and my fellow elected members, you will all have the opportunity during the summer time to take a break and spend time with your whānau, friends, and to enjoy the many benefits of living in our beautiful part of the world.

I'm looking forward to returning refreshed after the new year, ready to work together with my fellow elected members and in partnership with others, for the benefit of the community we all love and want to see prosper and succeed.

**Mā te mahi tahi, kia tutuki ai ngā moemoeā.  
Working together, we can achieve our aspirations.**



STEVE CHADWICK



*Elected members, taking a tour of the city wastewater treatment plant*



*Learning about the vision for the forest*



*Discussing the challenges of growth and development.*

Your elected members

# MEET YOUR NEW COUNCILLORS

The 2019 election saw four new faces join Rotorua Lakes Council as councillors.

They were sworn in on 24 October and have been part of an induction programme that included visits to key facilities, project sites and development areas, the inner city and the council-controlled organisations (CCOs), ahead of workshops to help determine the Council's priorities for the triennium.

Re-elected to Council were Dave Donaldson, Raj Kumar, Merepeka Raukawa-Tait, Trevor Maxwell, Tania Tapsell and Peter Bentley.



FISHER WANG



MERCIA-DAWN YATES



SANDRA KAI FONG



REYNOLD MACPHERSON

## Te Tatau o Te Arawa – Meet the Board

Recent elections for Council's Te Arawa partnership board, Te Tatau o Te Arawa saw six new members elected.

Representing Te Arawa's collective interest the board is made up of a broad cross section of Te Arawa. This diverse group includes koeke, rangatahi, Ngāti Whakaue, Te Arawa hapū

and iwi, Māori land trusts and incorporations as well as pan Te Arawa entities.

### Board members:

- Kiri Potaka-Dewes
- Danielle Marks
- Kahutapeka Ututaonga
- Geoff Rolleston
- Rawiri Waru

- Rangitīria Tibble
- Te Mauri Kingi
- Aroha Bray
- Mala Grant
- Eraia Kiel
- Gina Mohi
- Kapa Morgan
- Te Taru White
- Eugene Berryman-Kamp



 @TeTatauOTeArawa

 [tetatau.nz](http://tetatau.nz)

## Meet your community board members

Elections were held this year for both the Lakes Community Board and the Rural Community Board.

### Lakes Community Board:

- Phill Thomass – Chair
- Nick Chater
- Jennifer Rothwell
- Sandra Goodwin

### Rural Community Board:

- Shirley Trumper - Chair
- Bryce Heard
- Ben Hollier
- Sarah Thomson

To connect with your elected members visit the Council website for contact details:

 [rotorualakescouncil.nz/electedmembers](https://www.rotorualakescouncil.nz/electedmembers)



**SHIRLEY TRUMPER**



**PHILL THOMASS**

On behalf of the Rotorua community we would like to acknowledge and thank four outgoing councillors for their service to the district as councillors and as council representatives in a variety of capacities.



**MARK GOULD**

Mark Gould was a councillor for 12 years and was Council's representative on the Bay of Plenty Regional Council Public Transport Committee and the Rotorua Rural Community Board. Over the years he also hosted many overseas official delegations on behalf of Council.



**KAREN HUNT**

Karen Hunt was a councillor for 12 years and represented Council on the Rotorua Te Arawa Lakes Programme. She also worked with council staff and the community as councillor lead for inner city revitalisation and chaired Council's Resource Management Act (RMA) Policy Committee.



**ROB KENT**

Rob Kent was a councillor for 6 years and served as a member of the Resource Management Act (RMA) Policy Committee which reviewed a number of District Plan changes including those related to Pukehangi Heights, Significant Natural Areas, Noise, Signs and Holiday Rentals.



**CHARLES STURT**

Charles Sturt was a councillor for 33 years and during that time served in a variety of capacities including as a committee chair, most recently chairing Council's Operations and Monitoring Committee. He was also the councillor lead for the Sport and Recreation portfolio, overseeing many community facility developments.

# ARAPETA TAHANA, TE AHUREI

Arapeta Tahana is passionate about working in the intersect between iwi, community and local government, particularly within organisations and with people who believe in “tatau tatau”, working together for the good of all.

Taking up the new Te Ahurei role at Rotorua Lakes Council, Arapeta is excited about the opportunity to build on the Te Arawa partnership that was formalised in 2015. “I believe both Rotorua Lakes Council and Te Tatau o Te Arawa have done a great job in establishing the foundations of the partnership. I’m now excited about supporting Te Arawa and Council to deliver tangible projects and initiatives that further strengthen the partnership and contribute to the whole Rotorua district and its communities,” he says.

He believes the success of the partnership can be felt, rather than seen.

“Any genuine relationship has its foundations in the heart first and foremost. So, a successful partnership to me is one in which each partner feels loved, feels they are contributing to something greater than themselves (as individuals) and feels like life is positively magnified through the sharing of their success and failures with others. When this feeling is right, then we start to see the physical and tangible benefits of a successful partnership.

“I believe the Te Arawa partnership has created the right feeling and we are starting to see the physical manifestation of that

aroha through various projects, initiatives and events that are contributing to the vibrancy of the Rotorua district.”

Arapeta says he’s seen a significant improvement in the culture, focus and capability of the council organisation to deliver on the partnership.

***“I believe in the vision, intent and culture that Rotorua Lakes Council has developed and I believe I can make a meaningful contribution to the ongoing journey of Council and Te Arawa.”***

Arapeta has had a “somewhat organic and non-traditional career pathway”.

He began his journey at Waikato University pursuing a business management degree before changing direction due to his interest in entrepreneurship and the psychology of personal development.

“I found that a business management degree was more focused on teaching the technical skills of a business manager, rather than the psychology, culture and strategies of an entrepreneur so I dropped out of university after 18 months and took up a job selling mobile phones in a Vodafone store in Rotorua.”

The following year he franchised two Vodafone stores in Rotorua that he owned and operated for about four years.

“That experience provided invaluable business, relationship and financial management skills. I also learned a lot about myself, how I like to learn, how I respond to pressure and the need to balance personal and work life.”

He learned that making money, in itself, didn’t satisfy him.

***“I had a yearning to ensure the work I did contributed to a bigger goal, that it contributed to making a better a world for iwi and the communities that shaped me.”***

In 2009 after a short stint in Wellington working for the Porirua District Council, Arapeta returned to Rotorua where his career focused on supporting the growth and wellbeing of Te Arawa, particularly in terms of relationships with local government. He also served as a Bay of Plenty Regional Councillor.

***“I’m very conscious that my upbringing, culture and spirituality have absolutely shaped the way I work and the work I choose to do. I had a very staunch father who made it clear that we were to apply our knowledge, skills and passion to making a difference for our hapu, iwi and the communities we live in.”***



**Arapeta Tahana and Monty Morrison**

## MONTY MORRISON

Monty Morrison remembers vividly the day after the nehu (burial) of Mauriora Kingi, Council's Director Kaupapa Māori. Te Arawa had just lost one of their beloved tohunga and Monty was called to a hui with the Mayor at the request of Te Arawa leaders.

*"I walked in and they were all there."*

That was the day Monty was asked to take on an important role at the Council to fill the gap left by the passing of Mauriora.

***"I was walking down the corridor towards the Mayor's office when Anaru Rangiheuea came out and said – I want you to take Mau's job."***

Monty goes on to describe the emotions he felt on entering the room to find his mentor Pihopa Kingi, Ta Toby Curtis, Te Ariki Morehu and Mayor Steve Chadwick waiting for him. He says he was pleased that Tūhourangi kaumatua Anaru Rangiheuea was the person who made the decision.

*"It was a moment I will never forget."*

Monty quickly learnt that Mauriora was in fact the 'centre of excellence' for all things Māori within the organisation so he set about looking for ways to develop an organisation-wide approach to embracing kaupapa Māori so the demands weren't placed on just one person.

***"It was about starting with the little things that the various teams could embed in their own ways."***

Monty says his role at council gave him the ability to focus on strategy and creating centres of excellence. The Te Amorangi Unit was created to help fulfil Council's aspirations around biculturalism and to encourage collaboration so that Māori within the organisation were not working in silos.

***"Helping the organisation to grow in the bicultural space was the most enjoyable part of my time there – and of course being mandated by the Te Arawa leadership to move Te Arawa forward in partnership with the Rotorua Lakes Council."***

Monty now looks forward to the next kaupapa ahead of him, working alongside others to build the next level of leadership for Te Arawa.

Love to learn

# SUSTAINABILITY IN SCHOOLS

Rotorua Lakes Council has been working with Waikato Regional Council to offer its Enviroschools programme to more schools within the Rotorua district this year.

Established in the Waikato in 1993, the Enviroschools programme is a nationwide initiative helping to develop a generation of innovative and motivated young people who instinctively think and act sustainably.

Supported by Toimata Foundation, founding partner Te Mauri Tau, and a large network of regional partners, the programme empowers young people and their families to be connected with their environment and their communities.

As of May 2019, the programme is also now being delivered at Broadlands, Reporoa, Waikite Valley and Ngakuru primary schools.

Reporoa Primary is using the programme to help children discover how they are affected by and can influence the area in which they live.

The children have learnt a lot about ecological restoration from assisting in potting up and planting out at a local wetland restoration with Wairakei Estate. They also have a vegetable garden which they plan and maintain alongside the local community, empowering them to make healthier food choices and share kai and knowledge with the community.

**Reporoa Primary  
School students  
picking feijoas**



***“Our students need the support of the comprehensive Enviroschools programme to teach them about threats to our biodiversity,” says Reporoa Primary Principal Richelle McDonald. “The benefits of being an Enviroschool ripple out into the community as we are teaching the citizens of tomorrow.”***

Strong regional partnerships have supported the Enviroschools programme in more than 1200 schools and early childhood centres, helping them to grow and deepen their sustainability practices. Over the last six months, the programme has reached more than 268 students in the Rotorua district.

“It’s wonderful that Rotorua Lakes Council is partnering with Waikato Regional Council to empower young people to design and lead sustainability projects in their schools, neighbourhoods and country,” says Ruairi Kelly, Waikato Regional Council’s Senior Advisor Education Projects. “Together we will continue to support Enviroschools’ vision of creating healthy, peaceful, more sustainable communities.”



Visit [enviroschools.org.nz](https://enviroschools.org.nz) to find out more!

**Waikite Valley School students  
learning about harakeke planting**



Summer time fun

# RESERVE YOUR SPOT FOR SUMMER

Rotorua is home to 800 hectares of parks, gardens and reserves and more than 100,000 hectares of native and exotic forests. This summer make sure you visit one of these many parks and reserves. We've highlighted a few you might like to check out during the holiday period.

## Kuirau Park

Numerous walkways wind their way through the geothermal setting of this iconic geothermal central city park. Offering an exciting mix of mud pools and boiling lakes, the park is also home to a great playground, foot pools, and the popular Saturday morning Rotary Market.

## Lake Rerewhakaaitu Reserve


Check out the beautiful Lake Rerewhakaaitu, where there is an opportunity for camping, picnicking, swimming, fishing and boating. The lake is also a significant site for wildlife, supporting breeding populations of dabchicks, scaup and banded dotterel.

## Elliot Park Reserve

Take a walk along the beautiful Ngongotaha Stream Walkway and then stop for a break at the Elliot Park Reserve. The recently upgraded reserve near the heart of Ngongotaha features a great playground and picnic tables, perfect for a family trip.

## Centennial Park

Centennial Park (also known as the Rotorua Tree Trust) is situated on the slopes of Tihiotonga at the southern side of the city. There have been a variety of developments within the park over the years, more recently including the addition of a BBQ, toilet and picnic tables. It's ideal for walking, running, and bird spotting.



*Ash Pit Road Campsite Rerewhakaaitu  
by Nicole Portner photography*



*Rob and Roxy at  
Centennial Park*



## The year that was..

### January

- > Lakefront development architects Ithmus workshop with tamariki to understand their vision for the play space.

### February

- > Unveiling of the restored Te Arawa Soldiers Memorial.

### March

- > Bats sighted in the Sanatorium reserve.
- > International mountain biking event Crankworx in its 5<sup>th</sup> year. More than 14,000 attend.

### May

- > Community planting day at Hamurana Reserve

### June

- > Work starts on the new site of the Saturday Rotary Market at Kuirau Park.
- > Work starts on Long Mile road improvements and the carpark area at Forest Hub 2.



## July

- > Minister Shane Jones visits Whakarewarewa Forest and Lakefront development project sites.
- > Governor General Dame Patsy Reddy visits Te Aka Mauri and the Children's Health Centre.
- > As part of 'Plastic Free July', RLC hosts presentations themed around sustainability.
- > Rangatahi from kura kaupapa and decile 1 and 2 schools receive free tickets to Maori All Blacks vs Fiji in Rotorua.



## August

- > Prime Minister Jacinda Ardern announces \$20million funding for Rotorua Museum.
- > Local schools and day cares from Ngongotahā help plant 200 natives at the Pioneer Drainage reserve.
- > Commissioning of the East Rotoiti/Rotoma wastewater treatment plant.



## September

- > Inaugural indigenous arts festival Aronui features plays, performances, exhibitions and competitions.

## November

- > Cyway's shared path Linton Park Link is completed.
- > Construction of new playground and cycle track at Huia Lyons park begins.



Vision to action

# PROJECT UPDATES

For more information on any of these projects visit: [rotorualakescouncil.nz/visiontoaction](http://rotorualakescouncil.nz/visiontoaction)

## Lakefront development gets underway

Contractors have begun work on stage one of the lakefront development.

This involves construction of a boardwalk and terracing around the lake edge between the jetty and the eastern end of the lakefront. The multi-use boardwalk will provide spaces to wander, reflect and enjoy panoramic views of Te Rotorua-nui-a Kahumatamomoe (Lake Rotorua) and Mokoia Island.

Council has worked with iwi to establish clear guidelines during construction to protect lake water quality and kōura habitat, and to protect and reflect both Te Arawa heritage and the

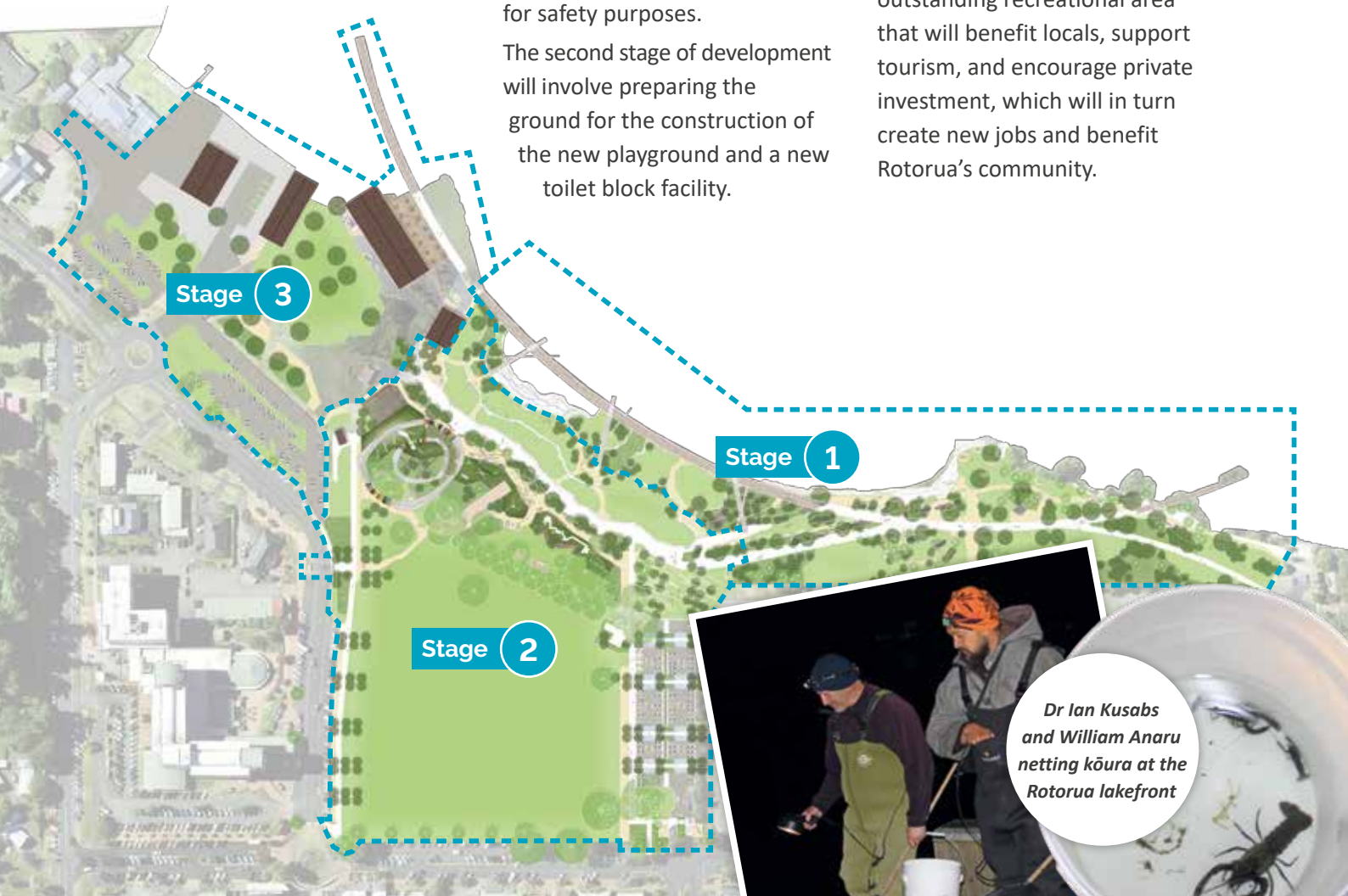
importance of the reserve to the community today.

Prior to construction, kōura living along the lake edge were caught and relocated to a rocky foreshore at Kawaha Point Reserve to ensure they weren't harmed during the construction. The lakefront development will be completed in stages to ensure parts of the reserve are always accessible and entertainment and activities will continue at the lakefront.

While construction is underway, it is important that people visiting the lakefront reserve adhere to signage and instructions from contractors for safety purposes.

The second stage of development will involve preparing the ground for the construction of the new playground and a new toilet block facility.

In partnership with Central Government's Provincial Growth Fund (PGF), Council is managing an investment of \$40 million between now and 2021 to transform this recreational, economic and cultural resource. The lakefront design has been made possible through the support of our partners, the Gifted Reserves Committee (Pukeroa Ōruawhata Trust) and Te Arawa Lakes Trust. The design reflects the heritage and ongoing contribution of Ngāti Whakaue and Te Arawa to the Rotorua district. Together, the vision is to develop the lakefront into an outstanding recreational area that will benefit locals, support tourism, and encourage private investment, which will in turn create new jobs and benefit Rotorua's community.



Stage 3

Stage 1

Stage 2

Dr Ian Kusabs and William Anaru netting kōura at the Rotorua lakefront

## PROJECT COMPLETION

### That's a wrap! In under a year most of the Long Mile Road upgrade is now complete.

Work to upgrade Long Mile Road began in late February this year and most of this is now complete with just the finishing touches being made to the bus and equestrian parking near the bottom of Nursery Hill.

The upgrade has included an improved intersection at Tarawera Road, improved and safer road markings, formalising of footpaths, the creation of a 3m wide shared path down the length of Long Mile Road, improved car and bus parking, upgraded stormwater management including planted swales, improved kerbs

and planting, and an improved connection to Scion.

If you haven't visited the forest recently, take the opportunity to check it out and enjoy the improved facilities.

Also underway as part of the forest development is a new forest hub off Tarawera Road (on the way to Tikitapu) which is scheduled to be finished by May 2020, and a new forest and city cycle loop. Still to come is a new visitor centre at the Redwoods and a specifically designed cultural overlay for the entire project.

The forest development is a

collaborative project between the Ministry of Business, Innovation, and Employment, Te Komiti Nui O Ngāti Whakaue, Tūhourangi Tribal Authority, CNI Iwi Holdings, and Rotorua Lakes Council. The development aims to enhance the forest amenity and improve the experience for all, create significant opportunities for the city, benefit tourism, spark commercial investment and create new jobs.



Vision to action

# PROJECT UPDATES

## Sir Howard Morrison Performing Arts Centre project pre-construction work underway

With \$22.5million funding secured for the Sir Howard Morrison Performing Arts Centre, deconstruction work is now underway in preparation for the main construction phase to start early in the New Year.

Contractors are currently removing internal wall linings and ceilings, lifting floors, and removing technical and mechanical equipment into

storage for re-use when the Centre reopens in 2021.

The project is also entering the final stage of design, with the architects and engineers now working on the detailed drawings and specifications.

The seismic strengthening and redevelopment work will transform the Centre into a fit-for-purpose performing arts facility for both our local

community and the wider region.

Funding for the project has come from a variety of sources including \$11.5million from RLC, \$5.2million from the Lottery Grants Board, \$3million from philanthropist Sir Owen Glenn, \$1.5million from Rotorua Trust, \$1million from NZCT, \$150,000 from Ngāti Whakaue trusts and \$125,000 from One Foundation.

*Preliminary design concept for the Sir Howard Morrison Performing Arts Centre. Courtesy of Shand Shelton*



### These investigations have included:

- Ground testing including geotechnical tests
- Roof investigations
- Building structure checks
- Fire safety and electrical checks
- 50m pool stability investigation

### Next steps:

Information from these investigations will assist detailed design and creation of a work plan. Once the plans are finalised a start date will be confirmed. It is likely work will start on the 50m pool during the winter of 2020 and will take at least four months. Timing will depend on availability of contractors, materials and good weather but to ensure continuity for users, work will be carried out in stages.

## Aquatic Centre update

Rotorua Aquatic Centre is a much-loved community asset that's due for big improvements.

Council allocated \$7.5 million in the 2018-2028 Long Term Plan to go towards initial stages of the centre's redevelopment.

Council is working with Aquatic Centre managers CLM and a user advisory group to deliver an upgraded facility that will continue to provide services for many years to come.

### Project work to date:

So far project work has focussed on investigating the current state of the facility to prepare for upgrades.



For more information on any of these projects visit:

[rotorualakescouncil.nz/visiontoaction](http://rotorualakescouncil.nz/visiontoaction)



The new market site



Interested in having a stall? Email: [kuiraumarket@gmail.com](mailto:kuiraumarket@gmail.com)  
 See you there!

## Kuirau Park markets - A 30 year tradition celebrated

The Kuirau Park Saturday market has been run by Rotary for more than 30 years and will shift before Christmas to a brand new site in the park. Rotorua Lakes Council and the Rotary Club of Rotorua North have been working on a purpose-built site that will cater for the market as well as carparking to support weekday inner city workers. A new basketball court is also being constructed.

The Market is well known to locals for its variety of food as well as fresh fruit and veges, plants, home-made preserves and much more. Run by Rotary volunteers where the stall fee profits go back to the community, it has been

responsible over the years for giving back to the community an average \$50,000 a year.

### The money raised has been used in a variety of ways including:

- Provision of defibrillators;
- A van for the Rotorua Health Camp;
- Start-up funding for delivery of Kiwi Can in Rotorua low-decile schools;
- Rescue helicopter night vision equipment;
- Locator pendants for people with Alzheimers;
- Support for Riding for the Disabled.

The success of the market is attributed to the great atmosphere, community support, stallholder loyalty, great food and products and the successful partnership between Council and Rotary.



Alongside the market, Friends of the Library run a book sale on the first and third Saturday of every month from 9am to 1pm.

**The market is on every Saturday from 7am to 1:30pm.**

## Museum project now underway

Work is now progressing with Rotorua's Burtons Construction in preparation for the main contractor to begin.

Thanks to funding from Government's Provincial Growth Fund (PGF), Ministry for Culture and Heritage's Regional Culture and Heritage Fund, Rotorua Energy Charitable Trust, Lottery Grants Board and Phillip Verry Charitable Foundation, the Museum is set to move into construction phase early next year.

Developed designs for the Bath House building were completed in October.

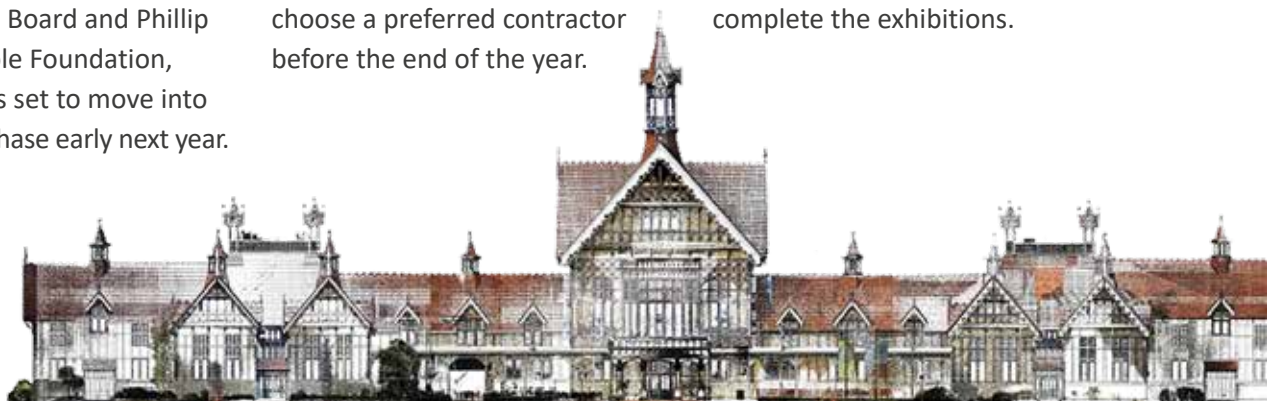
Following expressions of interest last year, tender documents were provided to five construction companies this October.

A selection panel will make a recommendation to council based on a thorough set of criteria to choose a preferred contractor before the end of the year.

Recruitment for a new Museum Director is also underway.

This position is pivotal to the successful re-opening the Bath House and redevelopment of the Rotorua Museum experience within it.

The Rotorua Museum Centennial Trust has committed to help raise additional funds required to complete the exhibitions.



# i-PARK FAQs

The rollout of the i-Park system began in Rotorua's inner city a year ago. Here are the some of the frequently asked questions we receive about the parking system.

## How do I tell if my payment goes through?

It may take a few seconds but wait until you see a green circle and the words 'payment successful' before leaving the machine. You can also request an emailed receipt for no extra cost to be sure that your payment is successful.






## How long can I park for?

Always check which area you have parked in by looking for a blue sign. In time restricted areas the blue signs indicate how long you can park for. A \$ sign means it's a paid, time restricted area. If you have reached the end of the time limit (i.e. 180 minutes) you must move your car to another car park between two different blue signs if you wish to park for a longer period. You can return to the same car park only after 30 minutes has passed. A ten minute grace period is applied to all parking spaces except for P15s.

## Where can I park for a full day?

There is still free all day parking on the outskirts of the CBD. If you wish to park all day in the inner city, you can use the parking building on Pukuatua Street, which also offers a 5-day concession for \$20. Changes to the parking building are also underway. The new layout of the building will soon see preferential parking provided to reserved car park holders on the lower levels before moving up to casual parkers. Licence plate reading entry/exit cameras will also assist in simplifying the user experience.

There are also free 60-minute parks in the majority of Tutanekai Street and adjoining parts of Arawa Street, Haupapa Street, Hinemoa and Eruera Streets. These provide easy and free, short term parking in the heart of the city for shoppers.

-  Half of the parking machines still accept coins. Stickers on the side of the yellow parking machines tell you what payment options the machine accepts. If you want to use coins, you may need to cross the street to use an alternative machine.
-  Always wait to make sure your payment has gone through at the machine.
-  Free 60-minute parks are available in the centre of town.
-  Take a picture on your smartphone if you tend to forget your number plate.
-  There is no change to the use of mobility parks. Please ensure mobility parking cards are displayed correctly.

## Examples of blue time restricted, free and paid, parking signs:



You can park here for 15 minutes at no charge



You can park here for 60 minutes at no charge



You can pay to park here for 90 minutes maximum



You can pay to park here for 180 minutes maximum



If you'd like to practise using the parking machines, there is one in Rotorua Library and one in Council's reception area. Staff will be happy to give you a run through. Additionally, the parking wardens and Safe City Guardians will be happy to assist if you're having any trouble using the machines on the streets.



*Community Constable O'Keeffe, far right, talks to elected members about the inner city partnership with Council.*



Making a difference

# COMMUNITY CONSTABLE ANTHONY O'KEEFFE

Constable O'Keeffe has been policing for more than 14 years following 20 years in the army. As Rotorua's Community Constable he keeps an eye on what is happening in the central city.

## **What is your role as Community Constable?**

I look at myself as a bit of a firefighter. When things are happening, I get there in a hurry. While I focus mainly on the CBD, I can still get jobs that take me anywhere from Tarawera to Rotoiti as needed.

## **How do you work with the Council around inner city safety?**

Council's Safe City Guardians are an extra set of eyes and ears for us, keeping an eye on things. If something is happening, people can let them know, and then they try to resolve it before needing any police involvement.

Council's CCTV cameras have also proven to be a useful tool in keeping an eye on what is happening and means I can be immediately alerted to anything happening. That direct link to me helps to cut down the response time.

## **What are some of the safety initiatives you have been working on with Council?**

We recently got Watchdog and VR Security on board with the Safe City programme. They are now working closely with the Council and me and have people watching the streets as well. Anything that is happening on the streets disorder wise, they have a direct link to us.

## **What are some of the benefits of the increased patrolling and cameras in the CBD?**

People are more aware of the cameras so are less likely to cause trouble so they act as a deterrent and the Guardians have such a good demeanor that sometimes they may be able to resolve a situation without needing to get us involved.

## **What are some of the main causes of disturbances in the CBD?**

Part of the problem is around drug and alcohol use. We are constantly working to address these problems, but they are complex issues that have not just appeared overnight. It is going to require all the key people and organisations to work together.

## **Do you have a positive story you would like to share?**

Seeing Council and all these different security entities come together has been awesome. Having that kind of support network has made everything work much better and much faster. We still get the general street disorder but the Guardians and cameras are really helping to move us in the direction of making the central city much safer.





On the job - tunga mahi

## CIAN WHITE

Ngāti Pikiao (Ngāti Te Tākinga), Te Whānau a Ruataupare, Ngāti Koura, Ngāti Kahungunu ki Wairoa

### **What is your mahi as the Performing Arts Director?**

To create accessible arts programming that creates platforms for local, national and international artists to engage with the Rotorua community and tourists in an authentic manner.

### **What are some of the challenges you have experienced with the Sir Howard Morrison Performing Arts Centre being closed?**

The opportunities I have experienced are; The utilization of some of Rotorua's key central spaces (such as Ōhinemutu, Ruapeka, Te Manawa, The Arts Village, Rotorua Little Theatre and the Blue Baths). Going out to the community and engaging with our audience in their respective spaces. Nurturing and growing the relationships between local arts practitioners and Council, and creating opportunities where artists can come together to discuss the vision for arts in Rotorua.

### **How does Rotorua's audience vary from other cities?**

Rotorua has a close to 40% Māori population, which makes us unique wherein that Māori make up almost half of the residents in Rotorua. Our unique landscape and setting is also our niche, so it's about telling stories and creating opportunities that highlight and uplift the aspects that make Rotorua so special.

### **What has been the highlight of your time in the Arts and Culture team?**

Creating Aronui alongside Rosemary Rangitauira, Megan Lacey, Jillian White and the Aronui committee. At the moment I am a team of one (Sir Howard Morrison Centre Team has not yet been hired) but I have appreciated the support of the business unit in the interim.

### **What do you see for the future of Rotorua's events and activities?**

I see Rotorua being the international epicenter for indigenous arts, culture, science and all indigenous matters.

What do you do to unwind?

Go to the movies, walk my puppy in the redwoods with my partner Willie and go on trips overseas! (Bali, here I come!)



# Water skiing

**If you're towing someone behind your boat, whether they're on skis, a wakeboard or biscuit, they must wear a lifejacket and only ski between sunrise and sunset.**

**As a skipper you need to:**

- Keep to designated ski areas (or make sure you are more than 200m offshore);
- Always have an observer who is aged 10 year or over; and
- Always tow in an anti-clockwise direction.

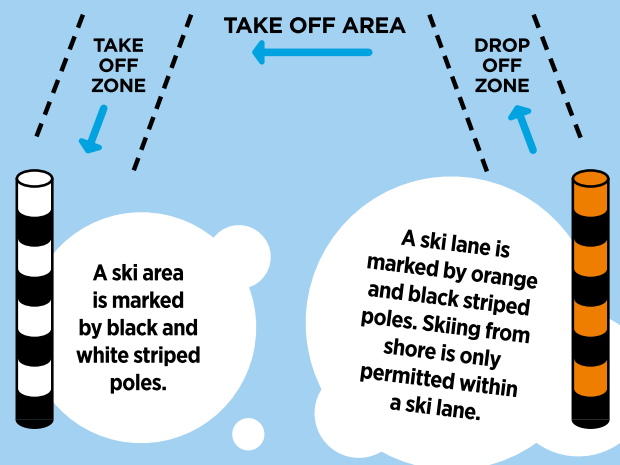
The designated ski lanes and ski areas throughout the region give priority to these activities.

**For more information visit [boprc.govt.nz/safeboating](http://boprc.govt.nz/safeboating)**

## Ski lane rules:

**NO BOATS TO PARK  
IN DROP OFF ZONE**

Orange  
& black  
marker  
posts  
on shore



## IF YOU'RE NOT A MEMBER, YOU'D BE DAFT NOT TO JOIN...



**STEVE** - Boatie for over 10 years  
Water in the fuel line - towed  
back to boat ramp



**BOATIE'S BEST MATE.**

[boatiesbestmate.nz](http://boatiesbestmate.nz) | 0800 BOATIE (262 843)



Find out more about Rotorua's cycleways and shared paths network at [cyway.nz](http://cyway.nz)

**In the community**

# A COMMUTER'S JOURNEY

I'm Rob Griffiths and I work in the Council's civic building as a part of the Corporate Planning and Governance team. My role has me moving around the organisation, supporting teams in Council with public engagement for their work programmes.

I ride every day, in all weather, and have done for over 10 years. I ride to work because I love riding bikes, it is fast, cheap, I have free parking and I am always up for some 'incidental fitness'.

When I ride to work I feel refreshed and ready. It is amazing how a 10-15 minute ride can clear the head, even more so for the ride home after work as it really allows me to leave it all behind.

It is a bit of a challenge when it is wet. I end up wearing more clothes just to stay dry and warm. Having good gear is key.

However, I have seen a different take on managing wet weather – a month or so ago I spotted a bike shop manager biking in togs and jandals!

My favourite quote, which pretty much sums up how I feel about riding, is ...

***"To me it doesn't matter whether it's raining or the sun is shining or whatever: as long as I'm riding a bike, I know I'm the luckiest guy in the world."***  
Mark Cavendish, British pro racer



Photo by Antoine Blondin © 2012

Making a difference

# KIWI CAN

## Empowering kids to overcome life's obstacles - Whakamanawatia ngā tamariki kia eke pānuku

Shaping and supporting our next Rotorua generation to be strong citizens is at the centre of a programme that has celebrated its first year in Rotorua.

Kiwi Can is a life skills and values programme delivered to whole schools by trained leaders recruited from the community. Every child in a Kiwi Can school receives a lesson every week of the school year with the Kiwi Can team alongside to weave the programme into the school's values.

Based on four themes – positive relationships, respect, integrity and resilience – the Kiwi Can modules have been found to result in children who are resilient, confident, socially and emotionally competent and of good character. This supports young people to contribute positively to their families and community, through the development of:

- A sense of self-worth and self-confidence;
- The ability to take responsibility and be accountable for their actions;
- A 'can do' attitude and positive approach to the challenges of life.

Kiwi Can is delivered by the Graeme Dingle Foundation Rotorua and was initiated locally by the district's five Rotary clubs with funding raised to bring the programme to Rotorua in 2018. It is currently delivered in Horohoro, Sunset, Kaitao and Mamaku schools.

School principals and teachers have said Kiwi Can has a noticeable effect on how well their children interact with each other, with significant decreases in truancy and bad behaviour.

**Like to know more? Want to see it in action?**

**Email  [rotorua@dinglefoundation.org.nz](mailto:rotorua@dinglefoundation.org.nz)**



*Kiwi Can in action  
– Rotorua*



*Sir Graeme Dingle and Lady Dingle  
(Jo-anne Wilkinson) in Rotorua at  
the one year celebration of Kiwi Can*



Investing in the community

# SWIM SCHOLARSHIPS UP FOR GRABS!

The Generation Homes Legend of the Lake is hosting the 2020 New Zealand Secondary Schools Open Water Championships, giving year 9-13 students the chance to compete in 500m, 1km or 3.5km events.

The Banana Boat New Zealand Ocean Swim Series is offering a scholarship for five individual swimmers from Rotorua secondary schools to participate.

Scholarship candidates need to attend one of these schools: Rotorua Boys High School, Rotorua Girls High School, Western Heights High School, Rotorua Lakes High School, John Paul College or Chapman College, be avid swimmers who can confidently swim 500m 1km or 3.5km in open water, and have represented their school in swimming.

One scholarship will be awarded per school.



Nominations are welcomed via email at [info@oceanswim.co.nz](mailto:info@oceanswim.co.nz). Please include the full name, birthdate, school name and year, contact phone details and a short description of why he or she should receive this scholarship. Nominations close 10 March 2020. [oceanswim.co.nz](http://oceanswim.co.nz)

# WORLD-CLASS BMX PARK OPENS

Rotorua BMX Club has celebrated the opening of its new world-class BMX and Supercross facilities at Waipa.

The facility has been named Te papa o Te Kauri by local iwi Tūhourangi. It was a pa site named after Te Kauri, wife of Rātōrua, the eldest son of Rangitihi and the first of the 8 beating hearts of Te Arawa.

Work on the project started 5 years ago and the facility offers an 8m ramp and an elite Supercross Track that will enable the club to host international events.

The project received support from local and national funders and sponsors, Council, iwi, and Sport BOP and involved a lot of hard work by

volunteers and the BMX community. Council's contribution was the construction of a footbridge and carpark infrastructure.

Sponsors include project partners Red Stag, WSP, Spark Business, Permapine, and Ray White and support from Bespoke Landscape Design, Superdooper, Bright Wild Thomas, Cantec Services, Ash Air, Sefton Electrical, Patchell Group, Keyland, Landhelp, Unison, and Stone Interiors. Funders include RECT, NZCT, Lotteries Commission, One Foundation, Grassroots Trust, and the Lion Foundation.

Join the club or find out more at [sporty.co.nz/rotoruaBMX](http://sporty.co.nz/rotoruaBMX)



# What's on

## your district, your events



### CAROLS BY CANDLELIGHT

Bring a picnic for a fun family night of music, carols and entertainment.

**When:** Friday 13 December, 7pm – 9.15pm

**Where:** Kuirau Park

[f @RotoruaEastLions](#)



### FISH OUT OF WATER ART TRAIL

Track down the decorated fish and vote for your favourite in this fun trail.

**When:** 17 December – 3 February

**Where:** Collect from Rotorua iSite, Fenton Street

[f @FishOutOfWaterRotorua](#)



### SANITARIUM WEET-BIX KIDS TRYATHLON

Cheer on our Kiwi kids as they tackle this fun and active event.

**When:** Sunday 1 December, 7am – 12pm

**Where:** Kuirau Park

[tryathlon.co.nz/locations/rotorua](http://tryathlon.co.nz/locations/rotorua)



### BMX TRACK GRAND OPENING

Enjoy the grand opening at midday on Saturday followed by world-class BMX racing all weekend.

**When:** Saturday 7 & Sunday 8 December, 12pm – 5pm

**Where:** Waipa State Mill Rd

[f @RotoruaBMX](#)



### INTERISLANDER SUMMER FESTIVAL ROTORUA RACES

Enjoy an unforgettable day of racing with fantastic live entertainment.

**When:** Friday 27 December, 11am – 5pm

**Where:** Arawa Park Racecourse, Fenton Street

[arawapark.co.nz](http://arawapark.co.nz)



### GLO FESTIVAL - FAMILY NEW YEAR CELEBRATION

A fun, family event to celebrate the New Year. Gather with friends and enjoy local entertainment, family movie, great food and of course amazing laser and fireworks displays.

**When:** Tuesday 31 December, 5.30pm – midnight

**Where:** Rotorua Village Green

[f @RotoruaGloFestival](#)



### KATCHAFIRE

A fantastic concert featuring Katchafire, The Black Seeds, 1814 and more.

**When:** Friday 3 January, 5pm – 10.30pm

**Where:** Rotorua Village Green

[f @NeptuneEntertainment](#)



### CHINESE NEW YEAR AT ROTORUA NIGHT MARKET

Celebrate the year of the rat with a range of Chinese food stalls, music, dumpling eating competitions, lion dancing and more.

**When:** Thursday 23 January, 5pm – 9pm

**Where:** Te Manawa, Tūtānekai Street

[f @RotoruaNightMarket](#)



### BUNNINGS NORTHERN IPS

Our upcoming stars will play in the biggest touch tournament of the season.

**When:** Saturday 25 & Sunday 26 January, 8am – 4pm

**Where:** Rotorua International Stadium, Westbrook & Ray Boord Park

[f @TouchNZ](#)



### TWS WORLD 240S SUPERSTOCK CHAMPS

Over 100 of New Zealand's top Superstocks along with competitors from Great Britain.

**When:** Friday 24 & Saturday 25 January, 7pm – 10.30pm

**Where:** TWS Paradise Valley Speedway, Paradise Valley Road

[rotoruaspeedway.co.nz](http://rotoruaspeedway.co.nz)



### ROTORUA HOME & GARDEN SHOW

This show is packed with all the ideas you need to transform your home!  
**When:** Friday 31 January – Sunday 2 February  
**Where:** Energy Events Centre, Rotorua  
🌐 [homeandgardenshow.co.nz](http://homeandgardenshow.co.nz)



### MUSIC AT THE ROTUNDA

Bring along a deck chair or a rug and enjoy an afternoon of entertainment showcasing local music.  
**When:** Every Sunday in February & March, 1pm – 3pm  
**Where:** Band Rotunda, Government Gardens  
🌐 [creativerotorua.org.nz](http://creativerotorua.org.nz)



### WAITANGI - FOR THE LOVE OF THE PEOPLE

A celebration of New Zealand's national day. Live music & entertainment, competitions, interactive displays, market stalls, talks and tours.  
**When:** Thursday 6 February, 10am – 3pm  
**Where:** Ōhinemutu Village  
🌐 [@WaitangiDayRotorua](https://www.facebook.com/WaitangiDayRotorua)

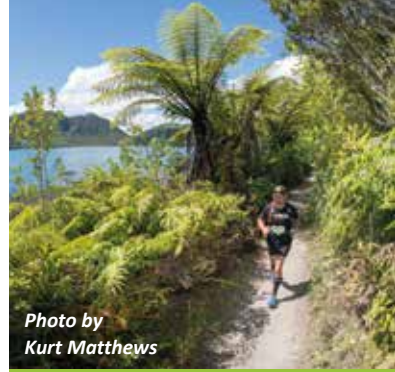


Photo by Kurt Matthews

### TARAWERA ULTRAMARATHON

New Zealand's most prestigious trail running event. 100miler, 102km, 50km or 21km.  
**When:** Saturday 8 February, 4am – 5pm  
**Where:** Rotorua Village Green  
🌐 [@TaraweraUltra](https://www.facebook.com/TaraweraUltra)



### FROCKS ON BIKES

Come along in your best dress and join a fun ride on the Linton Park Shared Path.  
**When:** Saturday 15 February, 2pm – 4pm  
**Where:** Linton Park Cycleway  
🌐 [@CywayRotorua](https://www.facebook.com/CywayRotorua)



### ART IN THE PARK

An artist & artisan market alongside local music and delicious food stalls.  
**When:** Sunday 16 February, 10am – 4pm  
**Where:** Government Gardens  
🌐 [artsvillage.org.nz](http://artsvillage.org.nz)



### GIANT 2W GRAVITY ENDURO - RACE 3

Enduro encapsulates everything people love about the sport of mountain biking.  
**When:** Saturday 22 February, 10am – 4pm  
**Where:** Whakarewarewa Forest, Long Mile Rd  
🌐 [enduronz.com](http://enduronz.com)



### LAKESIDE - TATAU TATAU

A star-studded outdoor concert of the best artists and talent from Rotorua and beyond.  
**When:** Saturday 29 February, 7.30pm – 11pm  
**Where:** Rotorua Village Green  
🌐 [rotorualakesideconcert.co.nz](http://rotorualakesideconcert.co.nz)



### VODAFONE WARRIORS V. WESTS TIGERS

Check out the Vodafone Warriors as they take on Benji Marshall's Tigers!  
**When:** Sunday 1 March, 2pm  
**Where:** Rotorua International Stadium  
🌐 [warriors.kiwi](http://warriors.kiwi)



Photo by Fraser Britton

### CRANKWORX ROTORUA

Bringing together a mix of local and international MTB athletes in a week-long festival showcasing everything that's awesome about riding a bike.  
**When:** Sunday 1 – Sunday 8 March  
**Where:** Skyline Rotorua  
🌐 [crankworx.com/festival/rotorua](http://crankworx.com/festival/rotorua)



### SUMMER EVENTS CALENDAR

Check out what's happening in Rotorua this Summer in the new calendar.  
**When:** Available from 29 November 2019  
**Where:** Rotorua iSite  
🌐 [rotorualakescouncil.nz/whatson](http://rotorualakescouncil.nz/whatson)

# Follow 'Rotorua Events' online

