

ROTORUA-TATAU TATAU

Our people, our culture, our place, our Rotorua

Issue 9 | September 2019

IN THIS ISSUE:

Making a difference at Sunset

Museum update

Kia kaha te reo Māori

Ngongotahā Stream work

COVER STORY: Hone's vision for Fordlands

ROTORUA
LAKES COUNCIL
Te Kaunihera o ngā Roto o Rotorua

Koinei tō tātau kāinga.

Ko tātau ōna tāngata.

Nā tātau tonu i ora ai **te ahurea Te Arawa** me ōna āhuratanga katoa.

He iwi auaha tātau e tuku nei i tā tātau e ako nei.

E kokiri nei tātau i te angitu, i te hihiri me ngā rerekētanga maha.

E kaha tautoko nei tātau i **whakapūmautanga o te taiao**.

Mō te katoa a Rotorua...Tatau tatau.

This is our home.

We are its people.

We're **the heart of Te Arawa culture** and expression.

We're innovative and we share what we learn.

We're driving opportunity, enterprise and diversity.

We're supporting a **legacy of sustainability** for our environment.

Rotorua is a **place for everyone**.

Tatau tatau - We together.



Rotorua residents are passionate about their places and spaces.

Partnerships are key to bringing about positive change in our district and in this issue of Tatau Tatau we feature some of the partnerships making a difference in our neighbourhoods and communities. Also featured are updates on key projects being delivered by Rotorua Lakes Council and information about some of the great events coming up in our district.

If you have story ideas for our next edition email: news@rotorualc.nz

**Te kaunihera o ngā roto o Rotorua,
Rotorua Lakes Council, Civic Centre,
1061 Haupapa Street, Rotorua**

Private Bag 3029,
Rotorua Mail Centre,
Rotorua 3046

📞 **07 348 4199**

🌐 **rotorualakescouncil.nz**

📘 **RotoruaLakesCouncil**

📷 **RotoruaLakesCouncil**

🐦 **rotoruacouncil**

Let's talk
Kōrero mai

REGISTER to get involved!

Have your say online

We are committed to ensuring that the local community can participate in the decisions that affect their lives and our environment.

🌐 **rotorualakescouncil.nz/koreromai**

Our Rotorua, weekly e-pānui

Stay connected

Keep up to date with work, projects, initiatives and decisions involving the council and your community with our **weekly e-panui**.

🌐 **rotorualakescouncil.nz/epanuisignup**



In the community



ART BY BIKE – MUSEUM OFFERS JOURNEY OF DISCOVERY

Rotorua Museum's tour on wheels is a journey of discovery for locals and visitors.

Art by Bike - Toi mā Runga Paihikara launched last October to coincide with the Rotorua Bike Festival. It proved the perfect way for people to explore the inner city's nooks and crannies and discover the hiding places of some of our public art, Rotorua Museum Volunteer and Creative Communities Scheme Lead Julie Parsons says.

The offering is back this month and will continue through to April.

Those taking the free tours also learn more about what the artworks mean and the artists who created them.

"We have such great public art in Rotorua," Julie says. "On their day-to-day journeys people just don't notice the detail of what's around them. Initially, the concept was for walking tours, but it was too limiting. You can cover a lot more ground by bike."

People who take the tour really enjoy the journey and are surprised to find pieces of art tucked down alleyways or on the walls of buildings, she says.

"Many people have never really taken any notice of the Chorus boxes and all are interested in knowing more about the works themselves."

The tour is an easy, two-hour pedal through Rotorua's central city, the lakefront and Government Gardens. Groups are accompanied by an experienced Rotorua Museum Outside the Walls Walking Tours guide who chats about each artwork along the trail.

Although the tour is free, participants must provide their own bike and helmet and Julie says the groups often stop for coffee at the end of the tour.

Tour guide Heather Willis says it has been a "revelation" discovering the hidden treasures along city streets, in our parks and lakeside.

"The varied combination of the art and the natural wonders to be found on the tour while cycling around at a relaxed pace is suitable for all ages and abilities," she says. "Anyone can take part - we've had recumbent cyclists, trikes and I ride an e-bike."



How to get involved:

When:

September to April, starting 10am on the last Saturday of the month and every Saturday during February, Aotearoa Bike Month. Note: these tours are weather-dependent.

Where:

Start and finish at Te Manawa, intersection of Hinemoa and Tūtānekai streets.

Who:

Suitable for all ages and levels of fitness – children must be supervised by an accompanying adult.

Equipment:

Bring own bike (pahikara), cycle helmet (potae pahikara), water bottle and snacks if required, sunblock and protective clothing as appropriate.



In your neighbourhood

WORKING TOGETHER TO REVITALISE FORDLANDS



A collaborative project with a focus on community safety and wellbeing aims to bring about positive change in the Fordlands neighbourhood.

A collaboration between the Fordlands community and Rotorua Lakes Council, the project is about providing spaces that are safe, nurturing and inviting and where the community can come together to play, exercise and grow healthy food to share.

Similar neighbourhood reinvigoration projects have occurred in Ngapuna and Western Heights.

The Fordlands community has been working with the council to have input into what residents would like to happen in their neighbourhood and as part of this, they will see upgrades to the playground in Huia Lyons Park, a new playground and Bikes in Schools at Sunset Primary School, and a shared path along the Utohina Stream. The community is also seeing benefits from children at Sunset Primary taking part in the Child Equity Programme.

Huia Lyons Playground Upgrade:

This project covers the removal of the existing playground and upgrading facilities in the park. Work will include:

- > Upgraded playground
- > Loop path and improved access into the park
- > Landscape features including low mounds, bins, planting and trees
- > Connection to shared path

Shared Path:

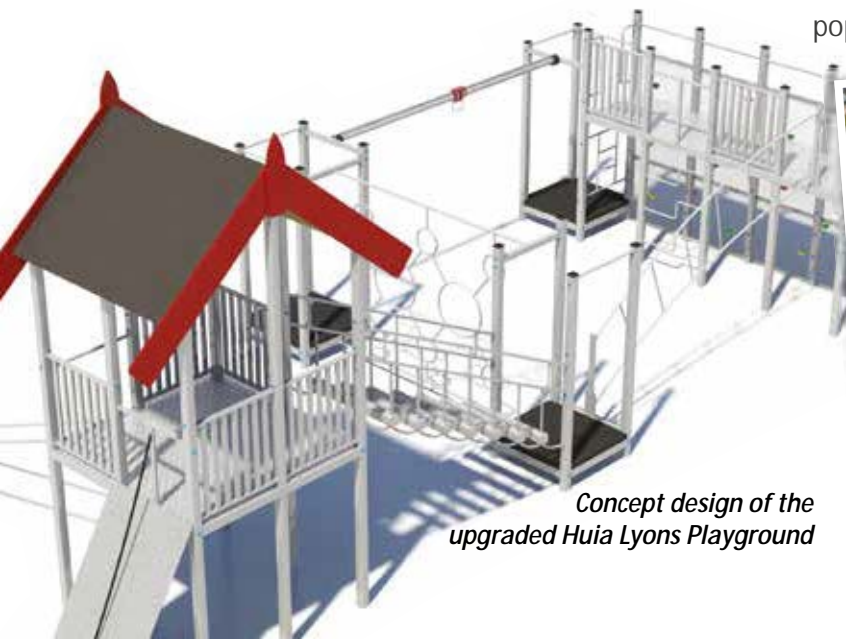
As part of the establishment of the citywide Cyway network of biking and shared paths, Fordlands community will soon have a connecting shared path along the Utohina Stream, stretching from Malfroy Road and through Wrigley Road Reserve to Old Taupo Road.

A mix of concrete surface, asphalt overlay and limechip materials will be used and the route will be along the existing path that follows the Utohina Stream. Council will also be looking for the potential to expand the shared path and connect with other communities in the area and there may also be opportunities to tell community stories or share art along the way.

Working Bees:

PlaceMakers recently got stuck in at Sunset Primary with a team of about 50 volunteers building vegetable gardens and replacing benches, steps and spouting. They also donated sports and garden supplies to the school including balls, hockey sticks, netball hoops, cricket sets and spades for the garden.

Seventy delegates from a Ballance Agri-Nutrients conference also recently visited Sunset Primary School to undertake a working bee. One of the teams built a huge sandpit, which is proving very popular with students.



Concept design of the upgraded Huia Lyons Playground



PlaceMakers staff working bee at Sunset Primary



Vision for Fordlands:

Hone Morris wants to see Fordlands thrive.

The Ko Te Tuara O Totara Fordlands Association member says it's great to see progress on so many activities which are included in the neighbourhood reinvigoration project.

"We want to make Fordlands a better place," he says.

Some of his longer term goals include getting a bigger community centre and a bigger skate park, and he's confident he will achieve this in time.

Another aspiration is for the stream to be a swimming hole for locals to enjoy.

Hone is well connected in the community and says the collaboration with the council is going well, building on existing relationships fostered by past Community Association members.

"Just walking around the community and talking with these whānau about the changes, I'm seeing a huge difference. There's a lot of pride in our community and we all want to see things improve."

Hone says community consultation has been key, as whānau feel like they have been able to have their say about what happens in their community.

"It's just really positive and exciting. It's awesome to see the progress and we can't wait to see the results."



Other initiatives included in the reinvigoration project include:

- > Child Equity Programme, a pilot in partnership with Sunset Primary School
- > Sunset Primary School Community Playground (Neighbourhood Matching Fund)
- > Free Parking and Youth Spaces Plus Programmes
- > Bikes in Schools programme
- > New bus shelter





Members of the Māori All Blacks; Shaun Stevenson, Rob Thompson, and Mitchell Karpik visiting Sunset Primary School

Community resilience

STRENGTHENING COMMUNITIES AND BUILDING RESILIENCE

Making a difference in the lives of our tamariki is the main focus of the Child Equity Programme.

A collaboration between Rotorua Lakes Council and Sunset Primary School, it aims to improve children's access to services and opportunities that can make a life-changing difference into adulthood. Essential support is provided by several other agencies and organisations including Te Waiariki Pūrea Trust which provides school holiday programmes at Sunset Primary.

The Trust works alongside rangatahi and whānau to support and encourage them to make positive changes in their lives through multiple services. The Trust is able to offer wrap-around support, providing the resources and tools to enable people to make positive decisions and changes.

Holiday programmes the trust provides at Sunset Primary incorporate activities to keep tamariki and rangatahi engaged and are beneficial to their personal growth and development.

Activities take place in the many and varied environments of the region and take into consideration seasonal variations.

Land and water-based physical activities are incorporated in each day's programme, alongside cultural and team building components.

This summer the Trust hopes to deliver water safety and drowning prevention programmes as part of the Child Equity Programme.

The Trust believes programmes like these are important so that money

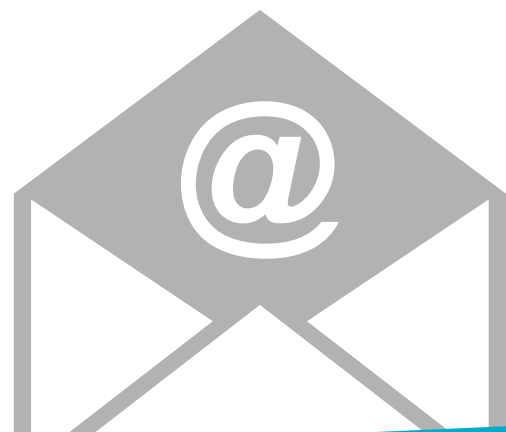
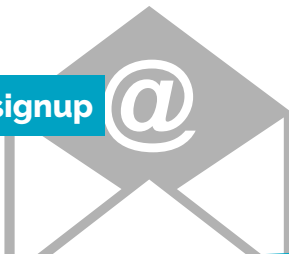
Our Rotorua – weekly e-pānui

Stay connected

Keep up to date with work, projects, initiatives and decisions involving the council and your community with our **weekly e-panui**.

Sign up at:

 rotorualakescouncil.nz/epanuisignup 





Child Equity Programme partners:

- > Sunset Primary School
- > Te Waiariki Parea Trust
- > Graeme Dingle Foundation
- > Ka Pai Kai Rotorua
- > Ko Te Tuara Totara O Fordlands
- > Rotorua Swim Club & SwimMagic
- > PlaceMakers

and social issues are not a barrier to being able to take part in activities like those offered through holiday programmes.

It's about connecting our young people to their community, culture and outdoor environments, alongside some personal development, provided by people who genuinely care about their wellbeing, the Trust says.

To the Te Waiariki Parea Trust and others involved, seeing the difference in the tamariki and rangatahi they are working with makes it very rewarding work.

Positive engagement can make a big difference – a smile and a hello can go a long way.

Can you help?

Sunset Primary School is looking for the following volunteers:

- > Breakfast Programme helpers
- > Sports coaches and managers
- > Oral language programme helpers
- > Sponsors to provide free lunches in partnership with Ka Pai Kai Rotorua

If you can help with any of these contact
Sunset Primary School

☎ **07 348 4289**

✉ **principal@sunset.school.nz**

Take a survey and enter the draw to WIN a \$100 Pak 'n' Save voucher!*

We want to understand how you receive council news.

To take the survey visit:

 rotorualakescouncil.nz/tellushowwetalk

**Terms and conditions apply. See rotorualakescouncil.nz/surveyterms for more.*





*Jill Campbell, Strategy Advisor,
Rotorua Lakes Council*

On the job - tunga mahi

JILL CAMPBELL

You are a strategy advisor, mainly looking after the Child Equity Programme – what’s involved?

My role aims to provide tamariki access to the things they need to thrive. The Child Equity programme is about ensuring equitable access to services and providing opportunities that can potentially disrupt the poverty cycle into adulthood. We are building on existing partnerships to focus on the areas where the need is greatest. There are a number of amazing programmes that exist in our city but many of our tamariki are not benefiting from them.

How long have you been in this role?

I have been employed by Rotorua Lakes Council since 2003. I initially started as the Youth Projects Officer, in 2015 I worked as a Project Manager on the Te Aka Mauri (Library and Children’s Health Hub) project and in 2016 joined the Strategy Team.

What do you love about your job?

I love serving our tamariki and community. He aha te mea nui o te ao? He tangata, he tangata, he tangata (what is the most important thing? It is people, it is people, it is people). This role keeps me grounded and focused on what is important and fair.

What are some of the more challenging aspects of your role?

The most challenging is seeing the effects of poverty and the toll

it takes on families. So many of our local families are struggling and I don’t know if people really know how hard it is for some of our kids, who always have to sit on the sideline because their parents can’t afford to pay school activity fees. Aside from missing out, they feel isolated because they don’t get to participate.

You often interact with young members of our community and help implement programmes to foster growth - what is this like?

Rewarding. Seeing tamariki play sport, meet the Māori All Blacks, learn to play music, is inspiring. Research shows that three in five children growing up in poverty will stay there for life. One of the best ways of disrupting the poverty cycle is through educational aspirations and achievement.

What do you love about living in Rotorua?

I’m Canadian and have lived in Rotorua for 16 years. My husband and tamariki are tangata whenua, which provides another level of belonging. Rotorua is rich in culture, people and natural environment and it’s this interconnectedness that makes it so special to me.

Your role is quite demanding, what do you do to unwind?

I spend time here, in our Rotorua with whānau and friends, at the lakes and in the forest and community.



In the community

NEIGHBOURHOOD SAFETY

Council has a team of active Animal Control officers who patrol daily and are on call 24/7 to respond to any incidents or complaints.

Attacks are a 'priority one' job which means they are responded to immediately.

Council's Animal Control officers respond to all jobs lodged as soon as possible. When not responding to a particular job they are out on general patrol around the district. The team must work within the legislation set out under the Dog Control Act.

If you own a dog it is your responsibility to:

- > Register your dog annually with Council;
- > Keep your dog well secured when unsupervised;
- > Keep your dog on a lead when in a public place. When in areas where dogs are allowed off the leash, ensure you are able to control your dog at all times;
- > Ensure your dog is adequately cared for.

Your dog must be registered annually from the age of 3 months and it's a good idea to get them micro-chipped so you can be contacted if they wander and get picked up.

Roaming dogs

Report roaming dog sightings to Council on 07 348 4199 as soon as possible and provide as much information as possible.


Reporting roaming dogs to Council means officers can attend sooner and are more likely to locate the dog(s).

When reporting a dog (if safe to do so) a photograph and/or a detailed description of the breed and if known, the address from which the dog emerged or is known to live, is useful.

If you see a roaming dog and you are concerned for your safety, it is important to try and distance yourself from the dog but do not run. If possible get behind a solid object such as a fence, inside your home if you are on your own property or get to your car if it is nearby.

If you find a lost dog and you are able to, secure it with a lead and call Council. If it has a registration tag, note the number and pass that on to Council. Arrangements can be made

for Animal Control officers or its registered owner to pick the dog up.

..... 

Only half of the dogs that are impounded by Rotorua Lakes Council are claimed by their owners and those that are able to be re-homed are put up for "adoption"

If you're thinking about getting a dog, consider adopting a "homeless hound".

Check out

 rotorualakescouncil.nz/homelessounds

to see which dogs are available for adoption and/or call

07 348 4199 to have a chat with our Animal Control officers to discuss your options and the requirements for adoption.



Bruiser with Animal Control officer Ben Clifton. Bruiser is a rehomed pup from the Rotorua Dog Pound.



Shaping our district

ROTORUA MUSEUM SEISMIC STRENGTHENING & RESTORATION PROJECT FULLY FUNDED

Last month the Bath House, home to Rotorua Museum, turned 111. The birthday was celebrated with a visit from Prime Minister Jacinda Ardern and Regional Development Minister Shane Jones.

The Prime Minister announced \$15 million in funding from the Government's Provincial Growth Fund (PGF) and \$5 million from the Ministry for Culture and Heritage's Regional Culture and Heritage Fund towards the

strengthening and restoration of the Museum building.

The funding recognises the building's national significance.

The project is also seen as another catalyst for significant

positive economic and social outcomes for the Rotorua community, supporting progress towards the district's long-term vision.

From left: Stewart Brown, Prime Minister Jacinda Ardern, Monty Morrison, and MP for Wairariki, Tamati Coffey



▶ **DEC 2016 - AUG 2017**
SEISMIC ASSESSMENT

Building rated earthquake prone at just 19% NBS.

▶ **AUG 2017 - DEC 2017**
STRENGTHENING
OPTIONS

A range of structural strengthening options were considered, from which one was chosen.

▶ **DEC 2017 - DEC 2018**
CONCEPT DESIGN

Structural and architectural concepts were developed. All objects, artworks & taonga were removed from the building.

Seismic Strengthening

Rotorua Museum closed to the public on 18 November 2016 following a rapid seismic risk assessment of the building after the 7.8 magnitude Kaikoura earthquake.

A detailed seismic assessment revealed that the Museum was 19% of New Building Standard (NBS). Buildings under 34% NBS are considered earthquake prone. On completion of the project, the building will be strengthened to at least 80% of the New Building Standard.

The strengthening programme involves underfloor work as well as the installation of new structural steel elements throughout the building to reinforce the existing elements and provide additional strength in the event of an earthquake.

Once completed, the building will look almost exactly the same as it did before it closed. Where changes are visible, the direction from Heritage New Zealand is for any new design elements to be sympathetic to the heritage building but clearly differentiated from it.

Upgraded and New Amenities

As part of the seismic strengthening and restoration project, the opportunity will be taken to upgrade key amenities in the building to enhance functionality, accessibility and the overall visitor experience.

New amenities will include:

- > New basement exhibition
- > New café and restoration of adjacent historic corridor
- > Upgrade of the north wing baths
- > Completed refurbishment of the south wing galleries
- > New fire egress from the rooftop viewing platform
- > New lift access to the foyer mezzanine
- > New conference room and additional storage
- > Increased toilet facilities
- > Enhanced mobility access

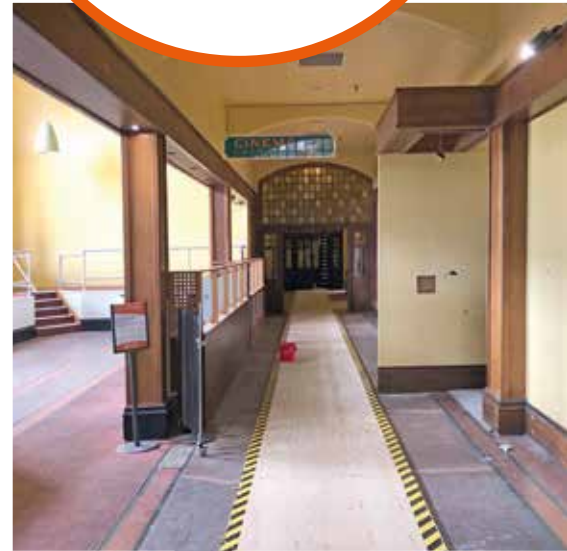
PROJECT FUNDING

\$51.1 million has been secured meaning the seismic strengthening and restoration of the Bath House is fully funded.

Rotorua Museum Centennial Trust has committed to help raise any additional funds required for exhibitions.

Visit
[rotorualakescouncil.nz/
reopenmuseum](https://rotorualakescouncil.nz/reopenmuseum)

for more information and to keep up to date with the Museum project



Restoration of historic corridor

▶ JAN 2019 - APR 2020 DESIGN PHASE

Detailed designs completed & resource consent granted. Construction contract awarded & building consent approved.

▶ JULY 2019 - APR 2020 ENABLING WORKS & EARLY CONSTRUCTION

Asbestos removal, under floor strengthening & south wing construction.

▶ APR 2020 - 2022 CONSTRUCTION & EXHIBITION DEVELOPMENT PHASE

Main foyer & north wing strengthening & restoration. Exhibition design & development.

▶ 2022 ROTORUA MUSEUM REOPENS

Shaping our district

PROJECT UPDATES

Enriching the forest experience

Creating a better experience for visitors and the community is the main aim of developments underway in Rotorua's Whakarewarewa and Redwood forests.

The latest addition to improvements on Long Mile Road has seen lighting installed along the new shared path to improve visibility and safety at night. Dimmer than standard street lights, the new lighting is designed to blend into the natural environment and illuminate the path and road, but not take away from the beauty of the night-time forest.

Construction work down Long Mile Road is still in progress as

contractors continue work on the parking area outside the Visitor Centre.

The shared path from Tarawera Road to the Visitor Centre is complete and 55 new carparks have been created on the Scion side of Long Mile Road, opposite the Visitor Centre.

Further up Tarawera Road, on the way to Tikitapu, earthworks and infrastructure improvements (for sewerage and water) are underway to create a new forest hub. The area is being transformed into a fit-for-purpose forest entrance featuring toilet and shower facilities, the addition of a sealed carpark as well as overflow parking space, and an event space and seating area.

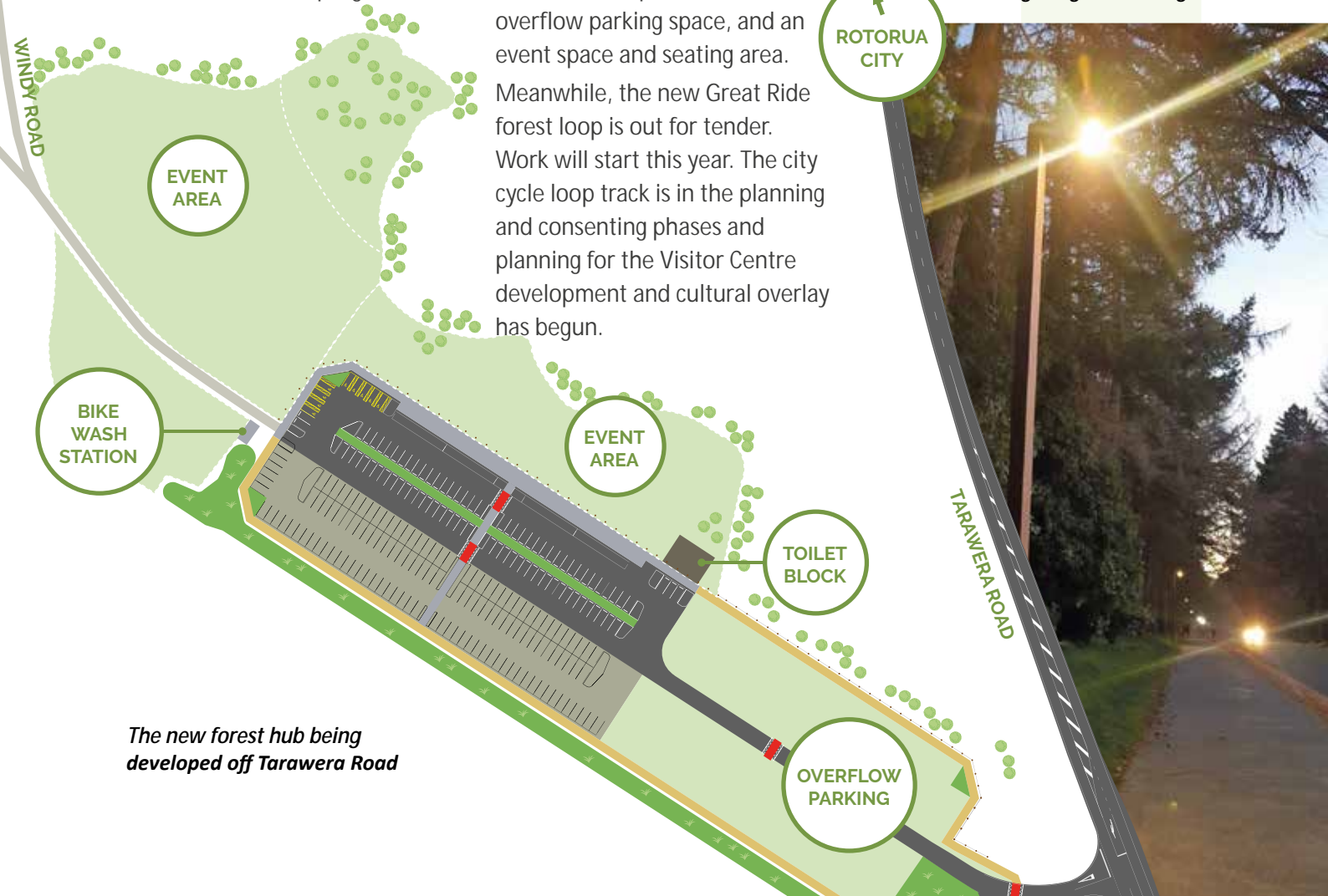
Meanwhile, the new Great Ride forest loop is out for tender. Work will start this year. The city cycle loop track is in the planning and consenting phases and planning for the Visitor Centre development and cultural overlay has begun.

Find out more at
[rotorualakescouncil.nz/
forestdevelopment](http://rotorualakescouncil.nz/forestdevelopment)



The Whakarewarewa Forest development is a collaborative project between the Ministry of Business, Innovation, and Employment, Ngāti Whakaue, Tūhourangi Ngāti Wāhiao, CNI Iwi Holdings, and Rotorua Lakes Council. It aims to enhance the forest's recreational amenities to better meet growing demand and enrich the experience for all users.

New lighting down Long Mile Road



The new forest hub being developed off Tarawera Road



Lakefront development

Earthworks will be the first part of the Lakefront development.

This will initially involve preloading the ground in the new playground area.

Parts of the Lakefront not being worked on will remain accessible throughout the project, including the existing Volcanic Playground.

Regular markets and entertainment will be largely unaffected.

The removal of asbestos from the Soundshell building has been

a long and complex process due to the hazardous nature of the substance. This site will become a temporary carpark while construction at the Lakefront is underway.

The Lakefront development is a collaborative project between mana whenua, Rotorua Lakes Council and the Ministry of Business, Innovation, and Employment.

The aim is to create an outstanding recreational area that benefits locals, supports tourism, and establishes a foundation for investment that will create jobs and benefit Rotorua's economy.

Find out more at

 [rotorualakescouncil.nz/
lakefrontdevelopment](https://rotorualakescouncil.nz/lakefrontdevelopment)

Transforming the Sir Howard Morrison Performing Arts Centre

A total of \$22.1 million has been secured to transform the Sir Howard Morrison Performing Arts Centre into a fit-for-purpose, flexible and accessible facility.

Work is set to start in November this year.

The project will see the centre strengthened, restored and redeveloped. Upgrades will include transforming the Concert Chamber into a flexible performance space, extending and upgrading the Civic Theatre to a 950+ seat auditorium, and renovating the Foyer, Banquet Room and other amenities.

The approved design, led by architects Shand Shelton, will expose some of

the original features of the category one heritage building, introducing wood to give a warm, contemporary feel to the interior. Stories of Ngāti Whakaue and Te Arawa, and recognition of the legacy of Sir Howard Morrison, will also be introduced.

In addition to Rotorua Lakes Council's contribution of \$11.5 million, the project has been made possible by the substantial support of a raft of external funders including an incredibly generous \$3 million donation from Sir Owen Glenn, \$5.2 million from Lotteries and

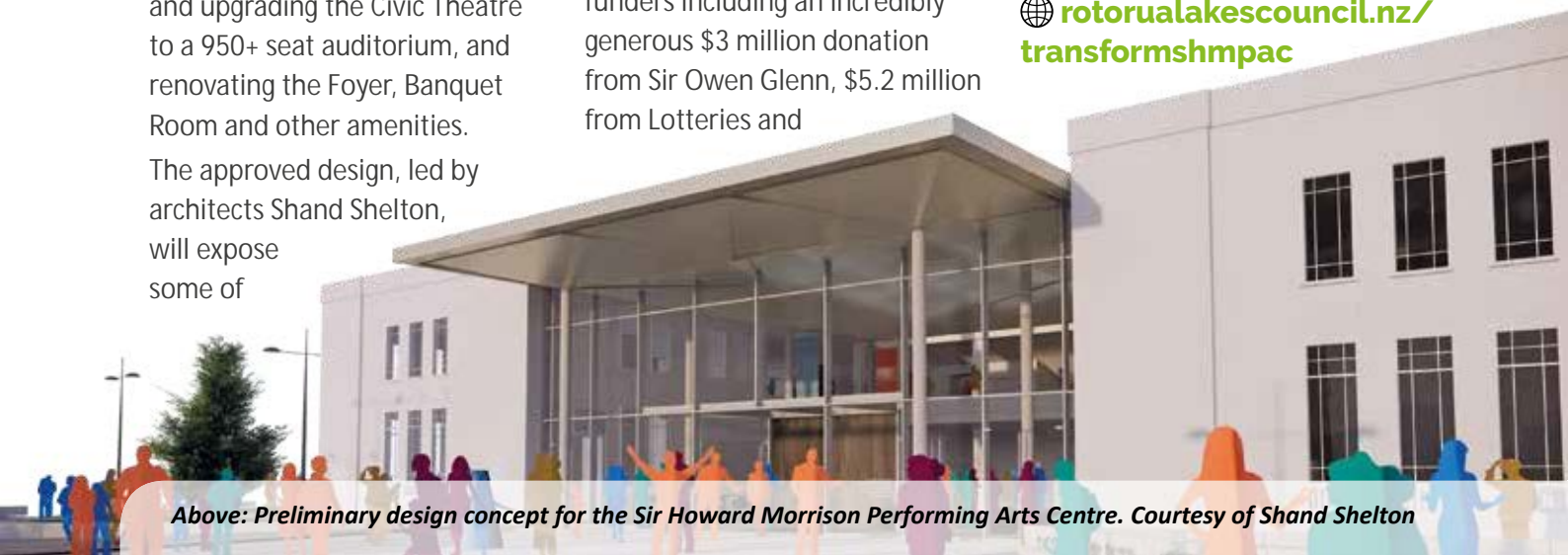
\$1.5 million from Rotorua Trust.

Early construction works will get underway in November, with construction expected to take 12 – 18 months.

When the centre is complete, Rotorua will once again have a special place to showcase its rich and diverse performing arts, and attract shows from around New Zealand and internationally.

Find out more at

 [rotorualakescouncil.nz/
transformshmpac](https://rotorualakescouncil.nz/transformshmpac)



Above: Preliminary design concept for the Sir Howard Morrison Performing Arts Centre. Courtesy of Shand Shelton

Time's almost up for old burners.



In the wintertime, Rotorua's air quality exceeds the safe and acceptable level set by the Ministry for the Environment. To fix this issue we need to remove all of the old wood burners in Rotorua. Bay of Plenty Regional Council has schemes to help replace existing heating and/or install insulation.

Some property owners will be eligible for FREE insulation and replacement heating, check if you are in the table below.

DO YOU NEED TO UPGRADE YOUR HEATING BEFORE 31 JANUARY 2020?

	You may qualify for FREE replacement heating	You may qualify for a Hot Swap heating loan
The house I own is in the Rotorua urban area	YES	YES
My house was built before 2008	YES	N/A
I hold a Community Services Card or a SuperGold Combo card	YES	N/A
I live in the house I own	YES	N/A
I have a pre-Sept 2005 installed wood, coal or multi-fuel burner in my home (that can't be used after 31/01/20)	YES	YES
My house is a rental property	NO	N/A

Go to www.cleanairrotorua.co.nz to request a Home Assessment



Phone Bay of Plenty Regional Council now:

- To replace a wood or coal burner (before the rules come into effect); or
- To install insulation; or
- For help to remove an appliance that burns wood or coal that you no longer use

Contact Bay of Plenty Regional Council 0800 884 880 (ext. 9345) for more information.

Clean Air Rotorua

To find out more call 0800 884 880 or visit cleanairrotorua.co.nz



East Rotoiti | Rotomā Sewerage Scheme

NEW WASTEWATER TREATMENT PLANT FOR EAST ROTOITI AND ROTOMĀ



Testing of and connecting properties to the new East Rotoiti | Rotomā Wastewater Treatment Plant is now underway following last month's official commissioning of the new plant.

The commissioning began with a pōhiri at Taurua Marae and attendees were able to tour the new plant. The East Rotoiti | Rotomā Sewerage Scheme is part of the Rotorua Te Arawa Lakes Programme which is a partnership between Te Arawa Lakes Trust, Bay of Plenty Regional Council and Rotorua Lakes Council.

The partnership highlights Council's commitment to work with others in their efforts to improve the water quality of Rotorua's lakes. The sewerage scheme aims to protect and improve the health of the lakes and individual properties in the area by providing the community with an essential service to responsibly dispose of wastewater in a way that is environmentally and culturally appropriate.

At the commissioning Rotorua Mayor Steve Chadwick spoke about the history of the project and the positive outcome that has resulted.

"The health of our water is about the health of the people and the health of the land, and today marks a key milestone on this journey.

"Conversations to improve the water quality of our lakes began a long time ago. Lake Rotoiti was identified as one of our most vulnerable lakes and the discussions that followed sparked the growth and strengthening of Council's relationship with iwi." Finding preferred options for the community has been a collaborative effort involving community representatives and local iwi, Rotorua Lakes and Bay of Plenty regional councils and others.

"The work underway here in Rotoiti to protect our water and land is both deeply spiritual and enormously practical, and it is symbolic of the investment in our relationship with iwi," Mayor Chadwick said.

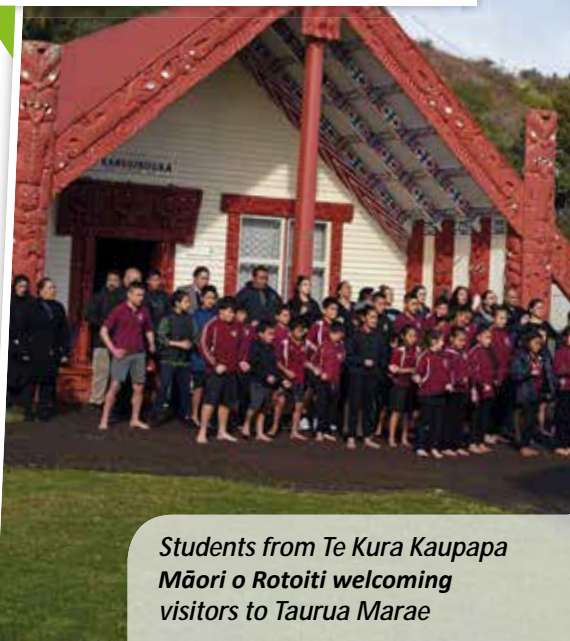
The Bay of Plenty Regional Council, the Ministry of Health, and the Ministry for the Environment supported the project financially in recognition of the environmental and public health benefits of the scheme.

Rotomā properties will initially be connected to the reticulation network via on-site Septic Tank Effluent Pumping (STEP) systems that have been installed.

Once on-site wastewater pre-treatment systems have been installed at properties in east Rotoiti, these will also be connected to the reticulation network which runs to the new wastewater treatment plant. Rotorua Lakes Council also supports a future proposed full wastewater reticulation and treatment scheme to serve all Lake Rotoehu properties, including Kennedy and Ōtautū Bays.

Find out more at

 [rotorualakescouncil.nz/
rotoitirotoima](https://rotorualakescouncil.nz/rotoitirotoima)



Students from Te Kura Kaupapa Māori o Rotoiti welcoming visitors to Taurua Marae

Community connections

\$10 FOR 30GIGS - FAMILIES SET TO BENEFIT FROM PARTNERSHIP

Many of us are so connected to the internet in our day-to-day lives we would struggle to think back to how we functioned without it.

Technology has progressed and changed lives in various ways including how we communicate, shop, learn, enjoy entertainment, manage money and consult with medical professionals.

However, there are still homes in Rotorua where there is no internet. The people in those homes are therefore excluded from the online interactions and services many of us may often take for granted.

Libraries have always adapted quickly to new technologies and helped bridge the digital divide for those who don't have good internet access. Rotorua is part of a network called Aotearoa People's Network Kaharoa (APNK) - a partnership between public libraries and The National Library of New Zealand. It provides free access to broadband internet services from public libraries so that everyone can benefit from accessing, experiencing and creating digital content. Rotorua Library provides free wifi and computers seven days a week.

Rotorua Library users also benefit from a partnership with Digital Inclusion Alliance Aotearoa. This provides digital inclusion programmes such as Spark Jump, which aims to help children learn online at home for \$10 for 30GB.

This low-cost, prepaid internet service is for families with children under 18 who currently have no broadband connection. There are no fixed term contracts to worry about, you just need to top up your data when it runs out and you can top up as often as you need, when it suits your family's budget.

Spark Jump is one of the many Stepping Up modules offered by the Digital Inclusion Alliance Aotearoa. Stepping Up is free community-based training that builds your digital skills and knowledge in small, easy steps in subjects that interest you for your life or work.

Regular, free Stepping Up classes are held by our staff at Rotorua Library covering a variety of topics including Facebook, Google Drive, Digital Photos, Word, PowerPoint and more.

To find out more about APNK internet access in the library, Spark Jump internet for families at home or the Stepping Up computer training, visit Rotorua Library seven days a week, visit

rotorualibrary.govt.nz/learn

or phone

(07) 348 4177



NEW APP FOR THE LIBRARY

The Library has recently launched a new app which gives easy access to its digital offerings.

You can find the app by searching for Rotorua Library in your Apple or Android app store.

Once you've installed the app you can manage the items you've borrowed on your library card, search for new items to borrow or reserve, download and read

eBooks, eAudiobooks, eMagazines and eNewspapers and search for information on a range of topics using our online databases.

You can also scan your plastic library card into the app and use your phone as a virtual library card so that you don't need to carry your card in your wallet.

Find out more about this at

rotorualibrary.govt.nz/app

or ask a member of the library team next time you're in town.

Reorua

KIA KAHA TE REO MĀORI LET'S MAKE THE MĀORI LANGUAGE STRONG

This year's Te Wiki o te Reo Māori theme 'Kia Kaha te Reo Māori,' aims to inspire us all to be strong in our efforts to embrace and learn te reo Māori.

It's been just over two years since we became the first bilingual city in Aotearoa New Zealand, and it's exciting to see Rotorua firmly cement itself as a place where te reo Māori can thrive. From eateries with bilingual menus, to instructional signage in the middle of the CBD, te reo Māori is becoming more and more visible.

Aneta Morgan who leads Rotorua Lakes Council's Te Amorangi Team believes te reo Māori is now more widely accepted in our community than it was two years ago.

"If the significant increase in people attending community reo classes is any indication, then there is a growing desire by people in this community to learn Māori. Creating safe spaces to use te reo in the community, whether it be in playgrounds, workplaces or seeing the language on city signage or hearing it spoken in the supermarket, these all help to normalise the Māori language as a language of communication for everyone."

Council Strategic Adviser Leigh Richards has been attending the te reo classes since she started working at the council six months ago. The classes have already attracted more than 140 people since they began.

Leigh says te reo Māori is a rich language that is more than just the words on the page.

"The face-to-face contact allows for exploration of the layers of meaning and the influence on the reo of, for example, relationships or whanaungatanga or the natural world and environment or taiao. I found that I wasn't getting this from just using books as a learning tool. Matua Wiremu has an interactive teaching style that means I get to kōrero in the classes. Nothing like having to speak a language to find out what gaps you have in your learning."

Kaiako (tutor) Wiremu Keepa says the best part about the classes is seeing the numbers grow, the diversity of those attending, and everyone's enthusiasm.

"I can see how each student tries really hard to recite the language. I remind them that we are in a wānanga, so mistakes are noted and corrected and not admonished. I try to mix fun with our learning as this makes the learning journey less daunting."



"Learning to Reo Māori is a lifelong journey."
- Leigh



If you're looking for ideas on how you can join in on Te Wiki o te Reo Māori, head along to the official website at tewikiotereomaori.co.nz

Community resilience

UPDATE ON POST-FLOOD ACTION PLAN FOR NGONGOTAHĀ

The project team tasked with mitigating future flood risk while work continues to repair damage has been busy this year.

Highlights so far have included completion of priority repairs and maintenance of the Ngongotahā Stream, including rock protection, and the installation of a new rain gauge at Relph Road to provide earlier flood warnings.

Project Manager Elva Conroy says a highlight for her has been the establishment of the Community Reference Group (CRG) and working collaboratively with partners.

"The CRG members are extremely passionate about their community. We take their lead on how to best engage the community and they also shape our monthly meetings in terms of priority matters.

"Rotorua Lakes Council and Bay of Plenty Regional Council work together on action plan tasks, both at an operational and senior management level and through collaboration between the Upper Catchment workstream staff and Paradise Valley Catchment Group."

She says there is a lot of work happening that may not be evident to residents yet.

"There are tasks within the action plan that will require [residents'] input and help. We'll always need help with planting days and input on the flood mitigation options is also important."

Having dedicated resourcing has also been a significant milestone for the team, enabling the appointment of a Bay of Plenty Regional Council engineer in Rotorua to oversee repairs and long-term maintenance of Ngongotahā Stream. A signed MOU between the two councils regarding stream maintenance has been another important step forward.

A Civil Defence Multi-Agency Response & Resiliency Plan has also been developed by the Council's civil defence team and sister emergency agencies. This essentially describes the triggers for and processes that need to be undertaken should the Ngongotahā community need to be evacuated as a result of another large flood event.

During the next six months the community can expect to receive more information about a suite of flood mitigation options to reduce the risk of flooding.



Get involved

If you want to talk about a community response plan or want advice on how to be prepared for an emergency contact Linda Johnston on

📞 **07 351 8312** or visit

🌐 **rotorualakescouncil.nz/civildefence**



Community engagement evening

Flood affected residents have had the opportunity to ask questions and find out how the implementation of the Flood Review Action Plan has been progressing at a community evening.

The Community Reference Group, Rotorua Lakes Council and Bay of Plenty Regional Council were there to share korero and respond to questions about what's been done, and what residents can expect to see over the coming months.

Planting Day

Last month about 40 people helped out at the Ngongotahā Stream community planting day when 1000 grasses and sedges were planted to stabilise the stream banks and margins along four different sites of the Ngongotahā Stream.

There was also some release-weeding carried out around more established plants that were part of last year's planting.

Local resident Ronald Espellarga was there with his son (pictured below) and said the day was a great way to get involved in restoration efforts.

"We really enjoyed participating in this activity and it was wonderful to meet others from the community who are passionate about looking after the environment."

The new plants will aid erosion stabilisation on stream banks and increase native biodiversity and habitat. It's part of overarching efforts to reduce the risk and impact of any future storm events in Ngongotahā.

Members of the Ngongotahā Community Reference Group, Civil Defence, the Bay of Plenty Regional Council and Rotorua Lakes Council were there to support the wider community, and answer any questions residents had related to the Action Plan currently being implemented.

Find out more at

 rotorualakescouncil.nz/floodreview

December 2018:

Release of flood review report

February/March 2019:

Community reference group established to work through recommendations together with the technical teams

May/June 2019:

Results from catchment modelling work due and preliminary works options developed

June/July:

Community engagement and dialogue on draft suite of options

July/August:

Finalise options report and highlight delivery timeframes (short/medium/long term including funding scenarios)

Later 2019 onwards:

Presentation of final recommendations to both Councils and progressive implementation of agreed actions once adopted by Councils.



Ronald Espellarga and his son Mikko Genesis

Celebrating a legacy

NEVEN HILL

Neven Hill has seen his fair share of changes at Rotorua Lakes Council – as you'd expect after 38 years. His first day working for the organisation was August 4, 1981, but the time has now come for Neven to call it a day and enjoy some time to himself.

With a background in farming, Neven started work at council as a trainee weed inspector and says he enjoyed being out and about and interacting with farmers.

When Local Government Reform legislation came into effect in 1987/88, the work Neven was doing was transferred to a newly created regional council.

While Neven had the opportunity to continue in his line of work with the regional council, he chose to stay at the district council and moved into a different role.

"When the 1989 Sale of Liquor Act came in, I was asked to help set up the systems and processes," he says.

Despite many other changes over the years, Neven says the fundamental processes haven't changed.

"Yes we have embraced technology, but we set up systems which were efficient and worked for us."

Neven has been instrumental in many council roles and has had a hand in shaping how the organisation runs day-to-day, involved in everything from setting up a central processing unit for building consents, to developing the council's website.

Fast forward to now, Neven is leaving his role of compliance solutions manager which has involved overseeing the likes of animal control and liquor licensing.

He wants things to run as efficiently as possible and is confident he's leaving Council with things working well.

"We are always looking at analysing ourselves and figuring out how we can do things better."

Rotorua Lakes Council has been a huge part of Neven's life, but he says he is now looking forward to taking some time out.

"I have never not worked and have not known what it is like to not work. I will miss my team. We have a very talented and dedicated staff and the way we work and treat people is critical. We all strive to treat people with dignity and respect," he says.

"I'm looking forward to doing some community work and taking time to smell the roses."



GET
READY
TO
Shake
Out

OUR NATIONAL
EARTHQUAKE DRILL
AND TSUNAMI HĪKOI

OCTOBER
17TH
1.30PM

SIGN UP TODAY [SHAKEOUT.GOV.T.NZ](https://shakeout.govt.nz)

Rotorua BIKE Festival

10 days of festivities, wheels and fun
October 25 - November 3 2019




What can the Rotorua community expect during this year's Rotorua Bike Festival?

The opening ceremony on Thursday 24 October will be at the Rotorua Night Market and people will be able to participate in bike activities.

In this year's line-up are Bike Festival favourites Whaka 100, Low Key Super D and Ride the Runway. New events in 2019 are Ride the Luge and a Diwali Night ride for the whole family.

 Check out the full festival schedule online at rotoruabikefestival.com

 Keen to volunteer?
Visit the website to check out opportunities.

it's how we roll!



ROTORUA INDIGENOUS FILM FESTIVAL

A collection of storytellers unit to deliver a celebration of their works, which cast a light on indigenous film making in Aotearoa, New Zealand and shares the stories of Māori.

When: 26 – 28 September 2019

Where: Rotorua

 aronuiartsfestival.com





Creative Rotorua

INCREDIBLE ARTISTIC TALENT ON SHOW

The Rotorua Museum Art Awards have returned for 2019!

Aiming to inspire local artists and highlight the wealth of talent here in the Bay of Plenty region, these popular biennial awards returned in 2013 after a 10-year absence.

The deadline for entry is Monday 30 September 2019. Entries are invited from artists, in any art or craft medium including digital/moving images, who currently reside, work or study in the Bay of Plenty. Rotorua Museum operations manager Cat Jehly, says the team is excited to see the entries this year as the quality of artworks increases each time.

This year there are \$14,000 in prizes is up for grabs: the Rotorua Museum Supreme Award prize of \$10,000; the Friends of Rotorua Museum Emerging Artist Award prize of \$1,000; the Toi Ohomai Innovation in Art Award prize of \$1,000; two More FM People's Choice Awards of \$500 each and the new Lockwood Youth Award prize of \$1,000.

Local artists who have won previous Supreme Awards include Kereama Taepa (2017), Mandy Hague (2015) and Kylie Tiuka (2013).

Sarah Ziessen, who won the Friends of Rotorua Museum Emerging Artist Award in 2013, has gone on to win the National Contemporary Art Award in 2018 with her innovative artwork *You and Me, The Weight of History*.

An exhibition of approximately 50 finalist entries will be open to the public at the Energy Events

Centre from Wednesday 23 October until Sunday 10 November 2019. A Salon des Refusé (for works not selected for the finalist exhibition), will open at the Pop Up Shop (1201 Eruera Street) from 2 - 17 November 2019.

Rotorua Lakes Council arts and culture manager Stewart Brown, believes it is a fantastic opportunity to showcase the region's incredible artistic talent and for artists to profile their work.

"The Art Awards are a great way to engage with the local arts community. We had fantastic feedback from all involved last time and can't wait to see what our talented region produces this year," he says.

rotoruumuseum.co.nz



GREASE – THE MUSICAL

1 - 9 November at Energy Events Centre

The world's best-loved musical is coming to Rotorua! With its phenomenal score, bursting with hits including *Greased Lightnin'*, this is sure to be a night to remember.

This musical classic is brought to life by Rotorua Musical Theatre. So round-up your T-Birds, pick up your Pink Ladies and remember why *Grease* really is "the one that you want".



Evening Shows (7.30pm) Matinees (2pm)

Adults	\$50	\$40
Seniors (65+ years)	\$35	\$25
Students (14-18 years)	\$35	\$25
Children (13 years & under)	\$25	\$20

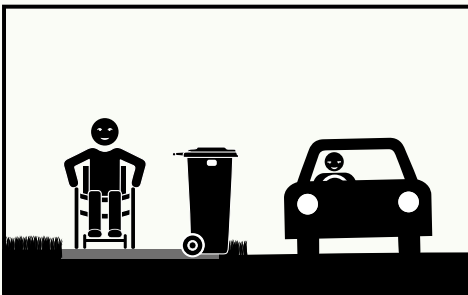
Buy your tickets
now from ticketmaster.co.nz
or visit the Box Office
at Rotorua Energy Events
Centre, Queens Drive.

GreaseRotorua



**ROTORUA
LAKES COUNCIL**
Te Kaunihera o ngā Roto o Rotorua

KEEP THE PATH FREE FOR ME



Park your car clear of the shared path.



Place your bins directly at the kerbside (see above). This gives path users plenty of space to safely navigate around your bins.



Courtesy crossings are the red or raised surfaces that provide a safer crossing point for path users. Motorists have the right of way, but remember road safety is everyone's responsibility.



What's on

your district, your events



TE TOKI – TE ARAWA HERO MURAL

Artist, Taumata Solomon, brings to life the essence of a Te Arawa hero who's known for their contribution to the arts. Public viewing times vary throughout the month.

When: 8 - 28 September

Where: Rotorua CBD

aronuiartsfestival.com



RACE @ THE LAKES

An exciting day of dragon boat racing for local businesses, friends and whānau.

When: Sunday 6 October 2019

Where: Lake Tikitapu (Blue Lake)

[@BayDragonsTauranga](https://www.facebook.com/BayDragonsTauranga)



WHANONGA PONO EXHIBITION

A vibrant, colourful and bold contemporary style which draws your eye into the energy created by Zena Elliott's artworks.

When: 18 - 29 September 2019

Where: The Arts Village

aronuiartsfestival.com



ROTORUA INDIGENOUS FILM FESTIVAL

A collection of storytellers unit to deliver a celebration of their works, which cast a light on indigenous film making in Aotearoa, New Zealand and shares the stories of Māori.

When: 26 - 28 September 2019

Where: Rotorua

aronuiartsfestival.com



PINK WALK

Rotorua Breast Cancer Trust's annual fundraising Pink Walk.

When: Wednesday 23 October 2019

Where: Rotorua Village Green

rotorubreastcancertrust.co.nz



ROTORUA MUSEUM ART AWARDS FINALIST EXHIBITION

Showcasing the top artworks from the 2019 Art Awards with all works for sale.

When: 23 October – 10 November 2019

Where: Energy Events Centre

rotoruumuseum.co.nz



ROTORUA FESTIVAL OF GARDENS

Share the joy of gardening and view some incredible local gardens in this festival.

When: 15 - 17 November 2019

rotorugardens.co.nz



CHRISTMAS PARADE & FESTIVAL

Start the festive season with all new parade and activities in Government Gardens.

When: Saturday 30 November 2019

Where: Government Gardens

christmasparade.co.nz



SPRING EVENTS CALENDAR

Check out what's happening in Rotorua this Spring in the new calendar out soon.

When: Available

Where: Rotorua iSite

rotorualakescouncil.nz/whatson



ROTORUA LAKES COUNCIL

Te Kaunihera o ngā Roto o Rotorua

For more information on these events go to:



rotorualakescouncil.nz/whatson

Follow Rotorua Lakes Council on:



[RotoruaLakesCouncil](https://www.facebook.com/RotoruaLakesCouncil)



[RotoruaLakesCouncil](https://www.instagram.com/RotoruaLakesCouncil)



[rotoruaacouncil](https://twitter.com/rotoruaacouncil)