

GOVERNANCE STATEMENT

Governance of the district relates to the manner of achieving representation of the community's views and how these are translated into actions and work programmes of the Council. This section focuses on the following governance themes:

Representation	<ul style="list-style-type: none"> ▪ involvement in governance decisions at Council and committee level ▪ advocacy undertaken on behalf of the Rotorua community ▪ effectiveness of governance structures
Leadership	<ul style="list-style-type: none"> ▪ overview of governance structures and outputs achieved
Strategic directions	<ul style="list-style-type: none"> ▪ strategic community achievements ▪ setting of strategic platform

Also included is a description of partnerships forged with other organisations, an overview of key planning documents, achievements, and areas for action.

Background

Local government in the Rotorua district is based on three core premises: transparency, participation and accountability. **Transparency** is achieved through the community being able to "clearly see the policies, plans and objectives and how they are able to be financed". **Participation** is achieved through the consultative community input processes that enable Council to connect with its constituents and interested parties. **Accountability** is achieved through a number of reports, including the Annual Report, which are produced to gauge effectiveness and attainment of targets. The Government's watchdog, the Auditor-General, audits both the financial and non-financial achievements in the Annual Report, providing both the community and Central Government with an independent assessment of Council's achievements.

Role of Council

Council has the overall responsibility for:

- Proper direction and control of the district's activities in a prudent financial manner
- Representing the views of the community in the most effective, strategic, and holistic manner possible
- Laying the strategic foundations for the district to grow in a dynamic and enabling manner.

These roles required stewardship of:

- Operation policy and strategic direction
 - Risk management
 - Administration of regulations and bylaws
 - Management integration
 - Safeguarding public interest, including advocacy.

Representation

Electoral System

The system of elected member representation is reviewed every three years. Currently there are four wards with three members elected per ward:

- North Ward
- South Ward
- East Ward
- West Ward

Ward boundaries are shown in this section. Members are remunerated in accordance with the determinations made by the Remuneration Authority.

Elections will be held in October 2004.

Meetings

Meetings up until October 2004 will remain as is. Council's committee structure and meeting arrangements will be determined by the new Council elected in October 2004.

The Mayor and Councillors

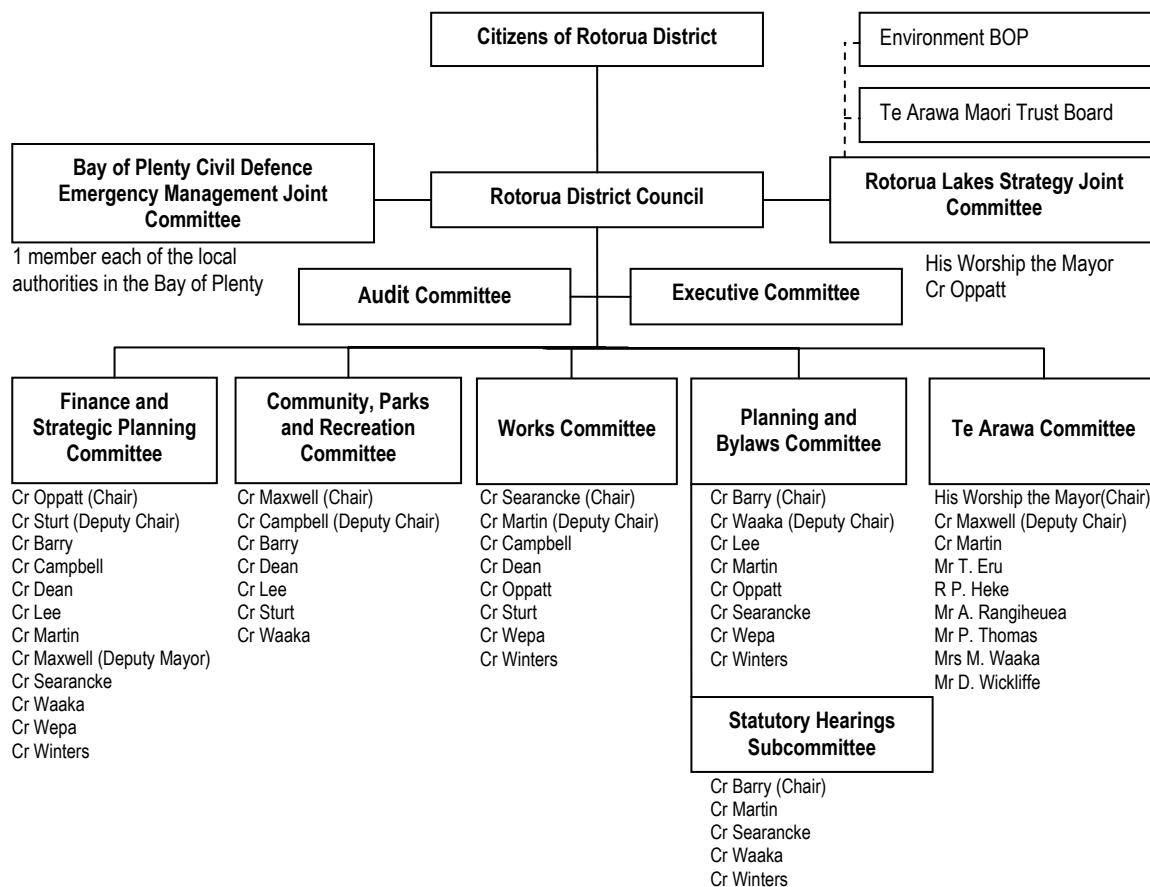
The Mayor is an ex-officio member of all Council committees and attends most meetings. The Mayor also holds positions on many trusts, community organisations, and community committees. These positions include acting as trust or board member, committee member or chair, and patron. The Mayor also hosts many meetings to ensure facilitation and transfer of knowledge within the community.

As well as holding the position of Justice of the Peace and Celebrant, the Mayor hosts Citizenship Ceremonies, Community Awards, Trustpower Spirit of Rotorua Awards, and Young Achievers Awards. The award ceremonies are well attended and recognise the important contribution that others make to the Rotorua community.

The information in the Governance Statement relates to Council as at 1 July 2004.

For up to date information on Governance check the 'About Your Council' document available from Council or on our website www.rdc.govt.nz.

Committee Structure until October 2004 Elections



Committee Terms of Reference

- Finance and Strategic Planning**
LTCCP and Annual Planning, Financial, general, marketing and development, Castlecorp business unit, and civil defence
- Community, Parks and Recreation**
Rotorua's Museum of Art and History, library, community, social policy, monitoring, information and research, community assistance policies, community safety, sister city relationships, parks and reserves, aquatic facilities, cemeteries/crematorium, event facilities.
- Works**
General, roading, road safety, traffic, land drainage, public health, water and lake waters.
- Planning and Bylaws**
Planning, regulatory, building, health, general and control of dogs
- Te Arawa**
As part of the Rotorua District Council's decision making process Te Arawa Standing Committee has the responsibility to provide a Te Arawa perspective on all matters that affect Maori.
- Executive Committee**
Comprises His Worship the Mayor, the Deputy Mayor, Chairperson of Finance and Strategic Planning Committee, Chief Executive, and where appropriate the Chairperson of the affected Committee. Its work includes decisions on applications for remission and/or postponement of rates in cases of extreme hardship, negotiation of leases and emergency matters.
- Statutory Hearings Subcommittee**
This committee is chaired by Cr Barry assisted by four other councillors who are members of the Planning and Bylaws Committee. It has approximately 12 meetings per year.

- Rotorua Lakes Strategy Joint Committee**
 Rotorua District Council, Environment BOP, and the Te Arawa Maori Trust Board form this joint committee. Lakes water quality is an important issue for the district and the Committee has been charged with ensuring a proactive strategic approach is taken toward co-ordinating lakes quality improvement. Mayor Hall and Councillor Oppatt are Council's representatives, Mayor Hall is Chairperson of the Joint Committee.
- Other Committees**
 These are formed as subcommittees to deal with particular issues as required. They usually meet irregularly and are in existence for as long as required, sometimes being in a period of abeyance between active periods. The Mayor is ex-officio member of all Committees.
- Audit Committee**
 This committee comprises His Worship the Mayor, the Chairperson and Deputy Chairperson of the Finance and Strategic Planning Committee and an "outside" appointee. Its work includes internal/external audit matters. This committee meets as required

Te Arawa Committee

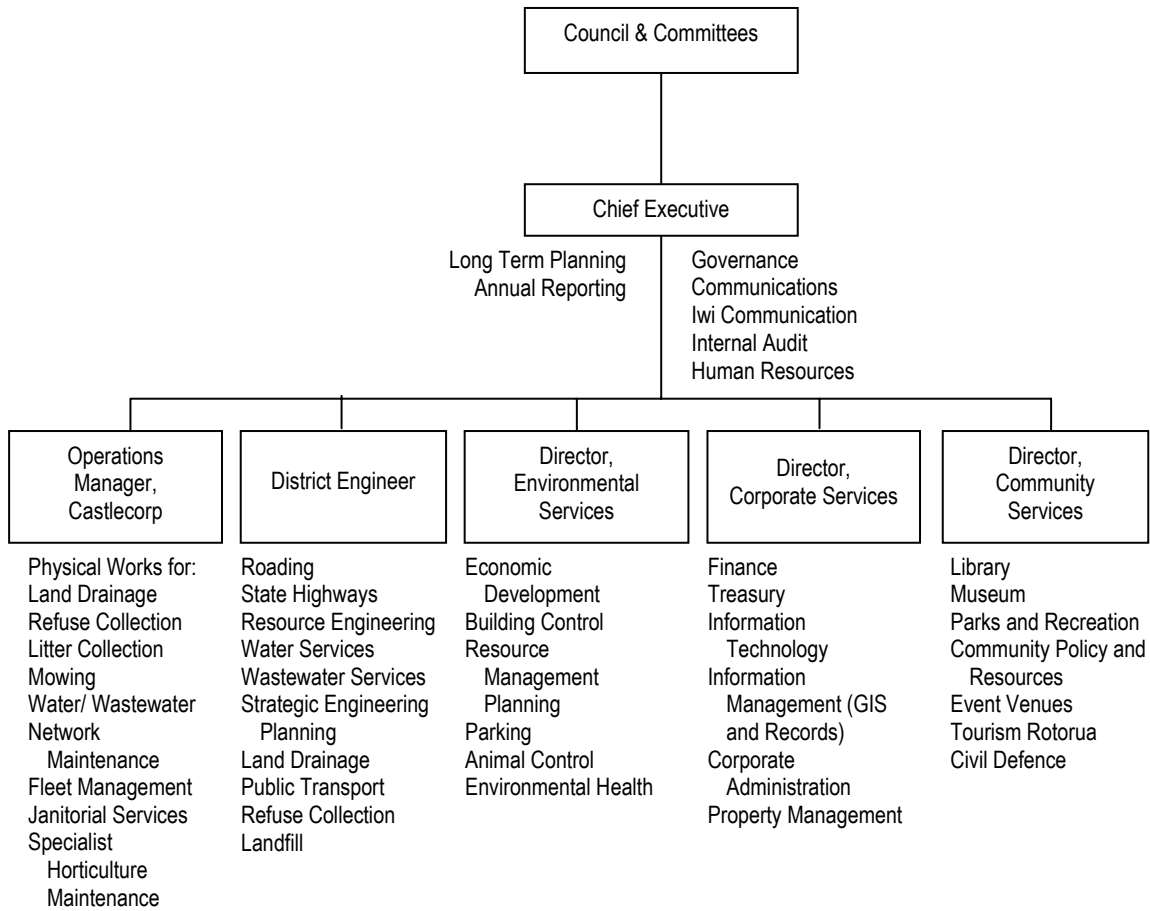
This committee has representatives appointed and elected from the Te Arawa Iwi. The committee's terms of reference are "to have responsibility for providing a Te Arawa perspective on all matters affecting Maori".



Back Row (left to right): Peter Guerin (Chief Executive), Piki Thomas, Mauriora Kingi (Director, Kaupapa Maori), Cr Bob Martin, David Wickliffe, Piwiki Heke
 Front Row (left to right): Anaru Rangihueua, Bella Tait (Policy Analyst & Iwi Research Officer), Mayor Grahame Hall (Chairperson), Deputy Mayor Trevor Maxwell, Cr Maureen Waaka, Tai Eru

In February 2004 Anaru Rangihueua resigned from the committee upon becoming Chairman of the Te Arawa Trust Board. The Trust Board's new representative on the committee is Sam Hahunga.

Management Structure



left to right - Paul Sampson – District Engineer (retired 9 July 2004); Charles Roberts – Director Community Services; Peter Guerin – Chief Executive; Jack Shallard – Director Corporate Services; Nigel Wharton – Director Environmental Services

Nico Classen was appointed the new District Engineer with effect from August 2004.