

Appendix A: Infrastructural Service Catchments

Catchments

Catchments have been determined for both wastewater and water services and the maps are defined in below.

Developments lying within a catchment will be charged a development contribution for that area. If for any reason a development falls outside the catchment, and is still served by the infrastructure associated with one of the activities, then the schedule of contributions for the serving catchment shall apply.

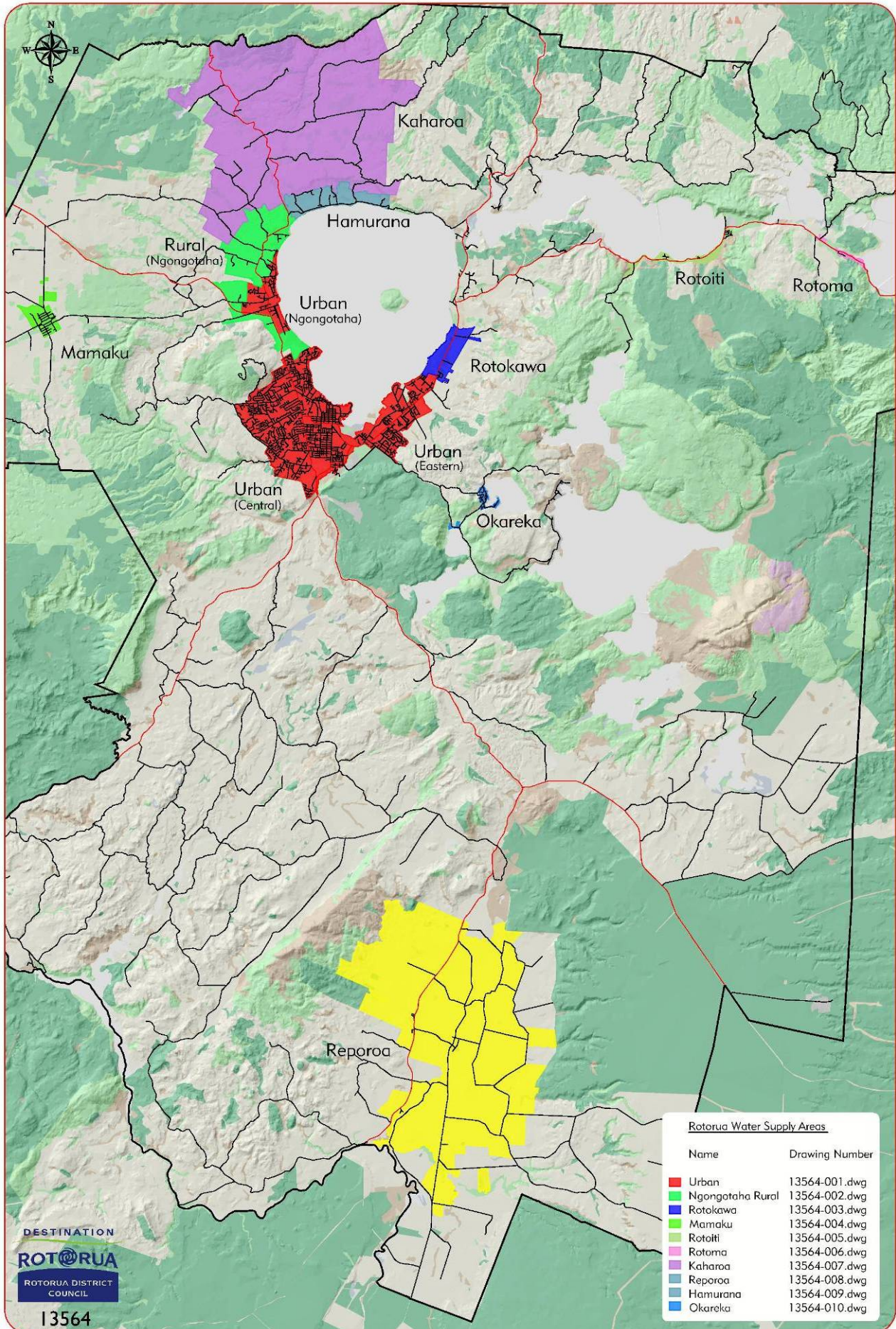
Map 1 Infrastructural Service Catchments: Water Supply

| | |
|----------|------------------|
| Map 1.1 | Urban |
| Map 1.2 | Ngongotaha Rural |
| Map 1.3 | Rotokawa |
| Map 1.4 | Mamaku |
| Map 1.5 | Rotoiti |
| Map 1.6 | Rotoma |
| Map 1.7 | Kaharoa |
| Map 1.8 | Reporoa |
| Map 1.9 | Hamurana |
| Map 1.10 | Okareka |

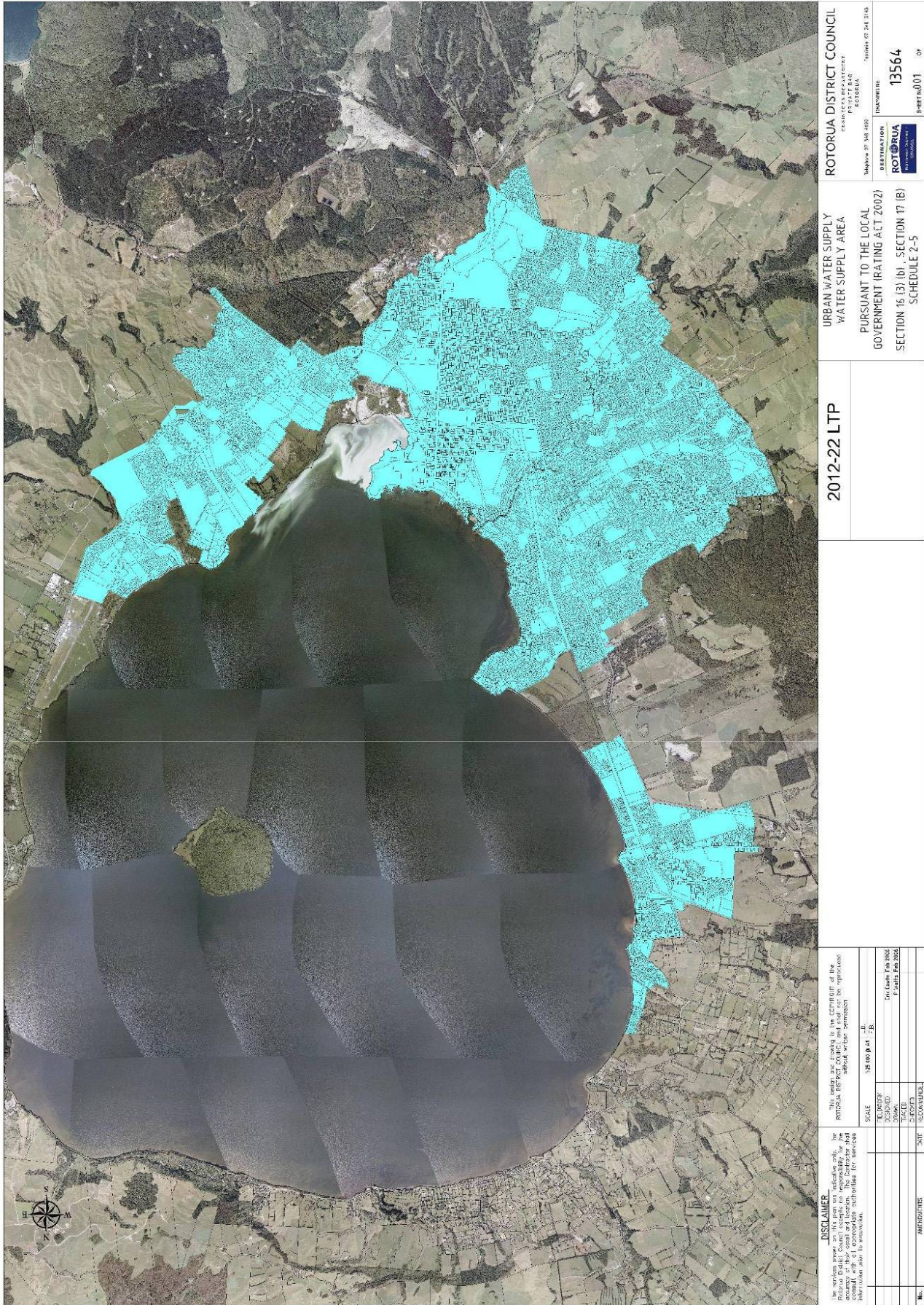
Map 2 Infrastructural Service Catchments: Wastewater

| | |
|----------|---------------------------------|
| Map 2.1 | Urban |
| Map 2.2 | Brunswick |
| Map 2.3 | Mourea |
| Map 2.4 | Okawa Bay/Duxton |
| Map 2.5 | Okere/Whangamarino/Otaramarae |
| Map 2.6 | Okareka |
| Map 2.7 | Tarawera |
| Map 2.8 | Rotoiti/Gisborne Point/Hinehopu |
| Map 2.9 | Rotoma |
| Map 2.10 | Hamurana |
| Map 2.11 | Rotokawa |
| Map 2.12 | Hinemoa Point |
| Map 2.13 | Brunswick Stage 4 & 6 |

Map 1 - Infrastructural Service Catchments: Water Supply



Map 1.1 - Urban



ROTORUA DISTRICT COUNCIL
 DEPARTMENT OF ENVIRONMENT
 PLANNING
 ROTORUA

DATE OF THIS SITE: 15/06/2012
 DRAWING NO: 13564
 SHEET NO: 001 OF 01

**URBAN WATER SUPPLY
 WATER SUPPLY AREA**
 PURSUANT TO THE LOCAL
 GOVERNMENT (RATING ACT 2002)
 SECTION 16 (3) (b) , SECTION 17 (B)
 SCHEDULE 2-5

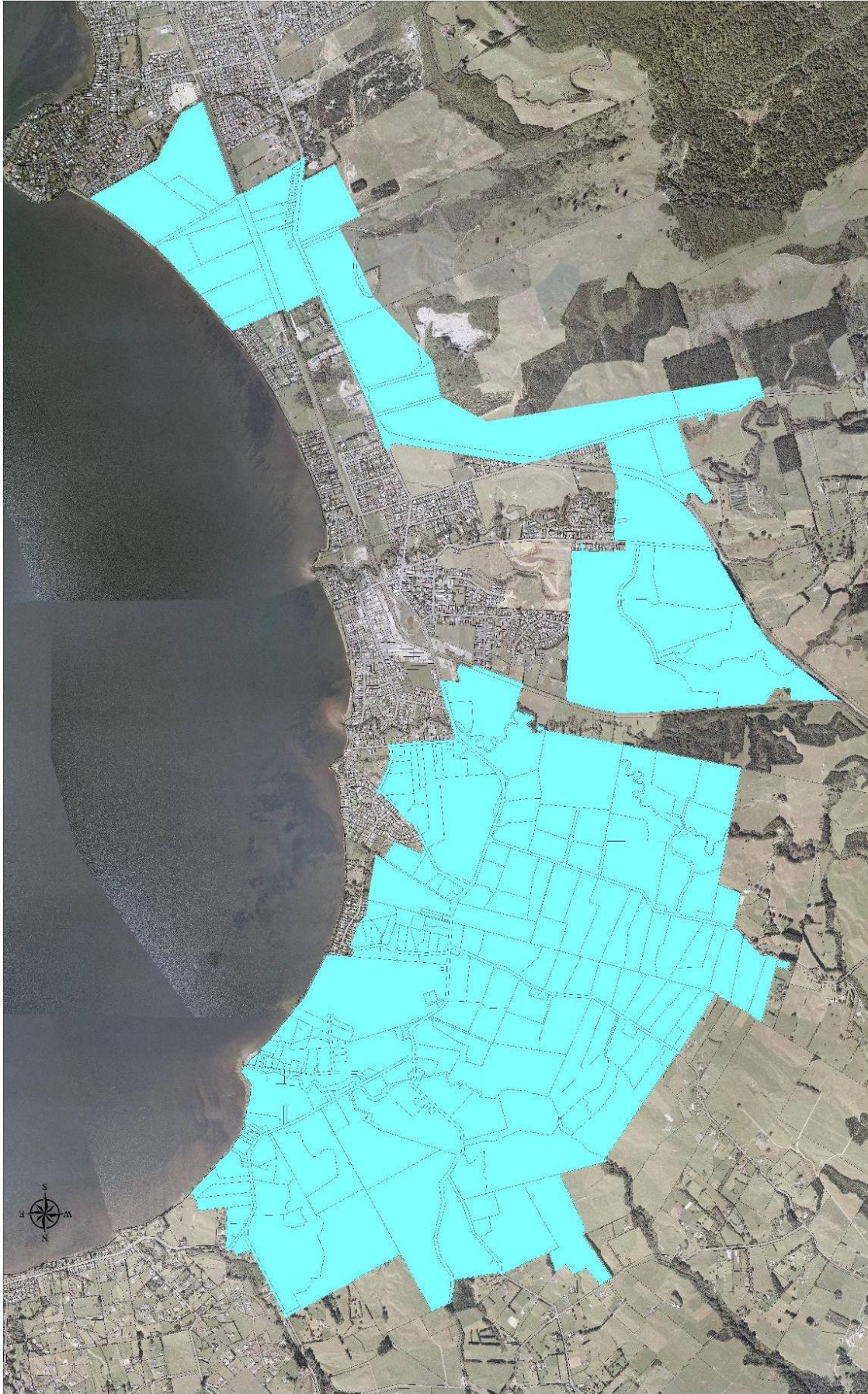
2012-22 LTP

The maps are shown in the copyright of the
 Rotorua District Council. No responsibility is
 accepted for any errors or omissions in the
 information shown on this map.

SCALE: 1:25,000
 DATE: 15/06/2012
 DRAWN BY: [Name]
 CHECKED BY: [Name]
 APPROVED BY: [Name]

| | |
|-------------|----------------------------------------------------------------------------------------------------------------------------------------------------------------------|
| DISCLAIMER | The maps are shown in the copyright of the Rotorua District Council. No responsibility is accepted for any errors or omissions in the information shown on this map. |
| SCALE | 1:25,000 |
| DATE | 15/06/2012 |
| DRAWN BY | [Name] |
| CHECKED BY | [Name] |
| APPROVED BY | [Name] |

Map 1.2 – Ngongotaha Rural



2012-22 LTP

NGONGOTAHA RURAL WATER SUPPLY WATER SUPPLY AREA PURSUANT TO THE LOCAL GOVERNMENT (RATING ACT 2002) SECTION 16 (3) (b) - SECTION 17 (b) SCHEDULE 2-5

ROTORUA DISTRICT COUNCIL
 ENGINEERING DEPARTMENT
 ROTORUA
 Telephone: 07 348 4180
 Fax: 07 348 3145
 DUNSMUIR ST
 ROTORUA
 313564
 SHEET 002 OF

DISCLAIMER
 The services shown on this plan are indicative only. The Rotorua Public Council accepts no responsibility for the use of this plan for any purpose other than that for which it was prepared. Consult with a professional surveyor for services information prior to installation.

SCALE: 10 000:1
 L.D.
 J.E.

| | |
|-----------|------|
| TECHNICAL | DATE |
| DESIGNED | |
| DRAWN | |
| CHECKED | |
| APPROVED | |

| | | | |
|-----|-----------|------|-----------|
| NO. | REVISIONS | DATE | REVISIONS |
| | | | |

10000:1
 POINTS PER 2000