

Partnership Model

Te Arawa *and* Rotorua Lakes Council

Presentation to Rotorua Lakes Council

Presented by TASC on behalf of Te Arawa

18 December 2014



*Today we can honour the past,
empower the present and strengthen
our future...*

*We believe in
“Tātau, Tātau - We Together”*

Today is a kōrero about how this can happen...

Overview

4

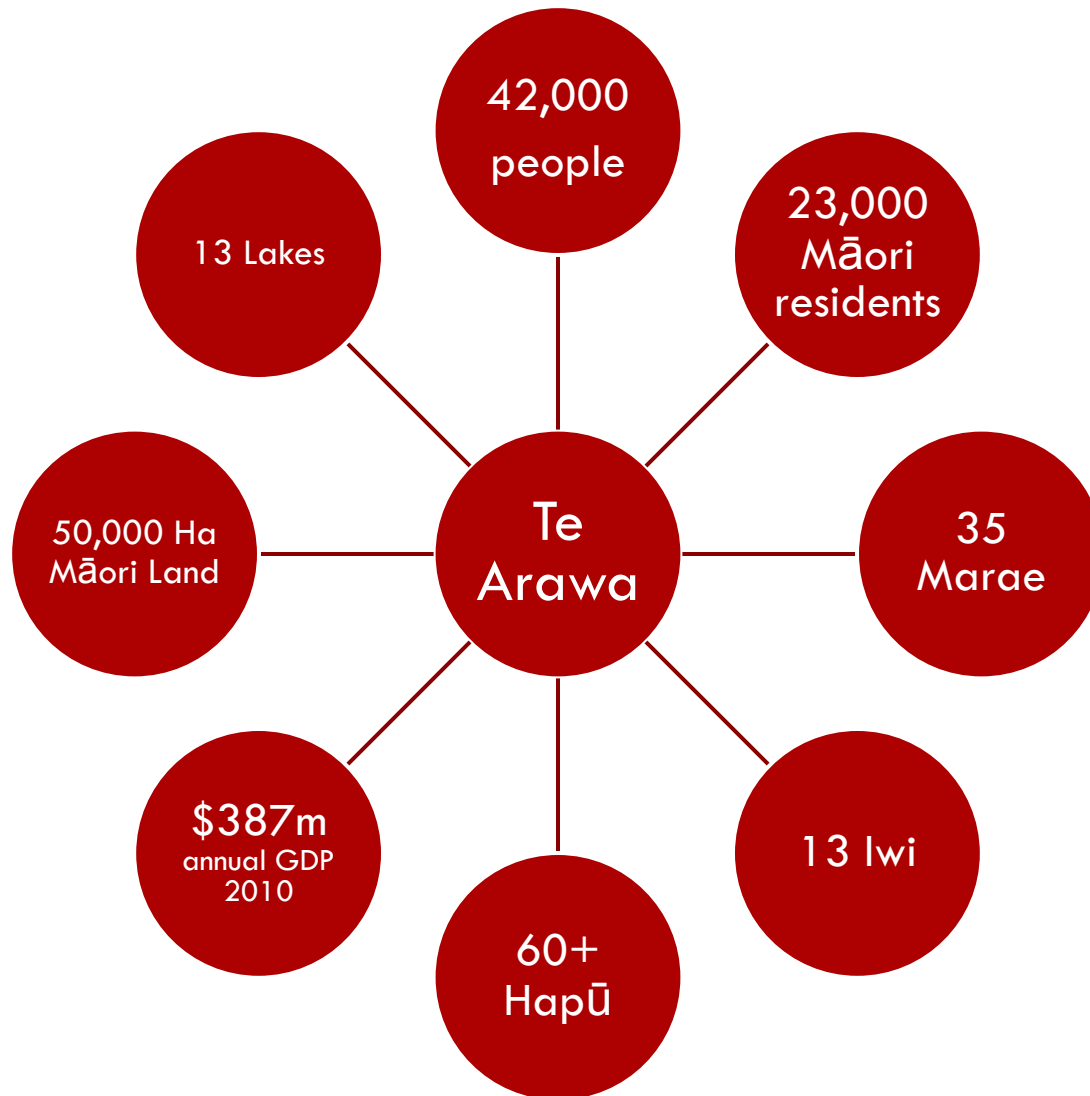
1. Introduction
2. Te Arawa Snapshot & Background
3. Legislative Framework
4. **Partnership Model**
5. Model Development
6. Summary

Introduction

Te Arawa wants to work in partnership with RLC to:

1. To strengthen Te Arawa's participation in RLC decision making
2. Strategic & Integrated Development that identifies opportunities to work together for the betterment of Rotorua
3. Build Te Arawa's Capacity and Capability to participate in RLC decision making
4. Improve communication, kōrero and information sharing
5. Improve RLC's delivery of its obligations to Māori

Te Arawa Snapshot



Historical Background

1880 Fenton's Agreement

1993 Establishment of Te Arawa Standing Committee

2009-2013

- Te Arawa expressed concerns with effectiveness of committee and Council practises
- Environment Court decision against RDC, advised to review practises in consulting Māori
- RDC announce commitment to undertake cultural audit

October 2013/14

- Rotorua 2030 Vision adopted – commitment to Te Arawa Partnership
- Project initiated to explore new Te Arawa/ RDC partnership model

Te Arawa Aspirations

8

- ✓ Need for clear purpose, functions
- ✓ Need for strengthened partnership with Council
- ✓ Affirm Iwi / hapū rangatiratanga
- ✓ Clear connection with stakeholders
- ✓ Effective advocate for Te Arawa interests
- ✓ Need to control own agenda and path
- ✓ Need for budget to effectively carry out objectives

Legislative Framework

9

s81 of the LGA

- ☑ Engaging and Consulting with Māori
- ☑ Building the capability and capacity of Māori to contribute to council decision making
- ☑ Providing relevant information to Māori for the purposes above

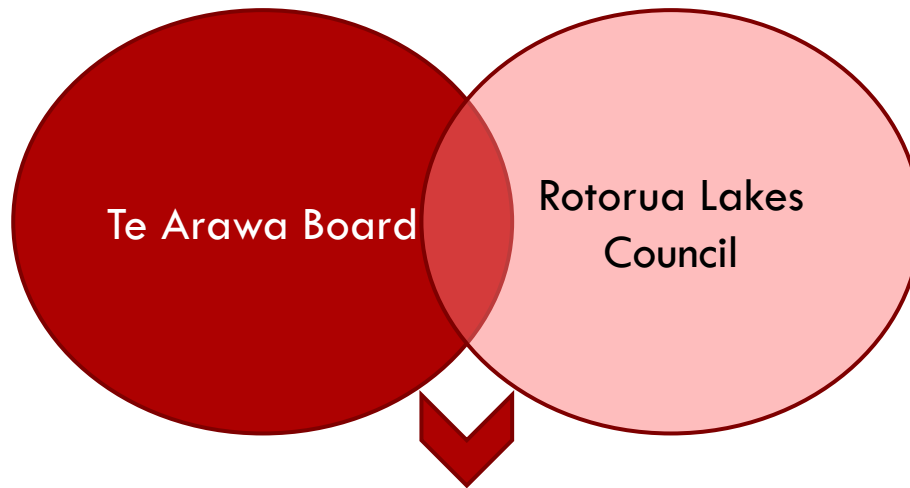
Legislative Framework

10

s6-8 of the RMA:

- ☑ Recognition of the relationship of Māori and their culture and traditions with their ancestral lands, water, sites, waahi tapu, and other taonga:
- ☑ Have regard to the role of Māori as kaitiaki
- ☑ Take into account the principles of the Treaty of Waitangi
- ☑ Mechanisms in place to ‘give effect’ to the above

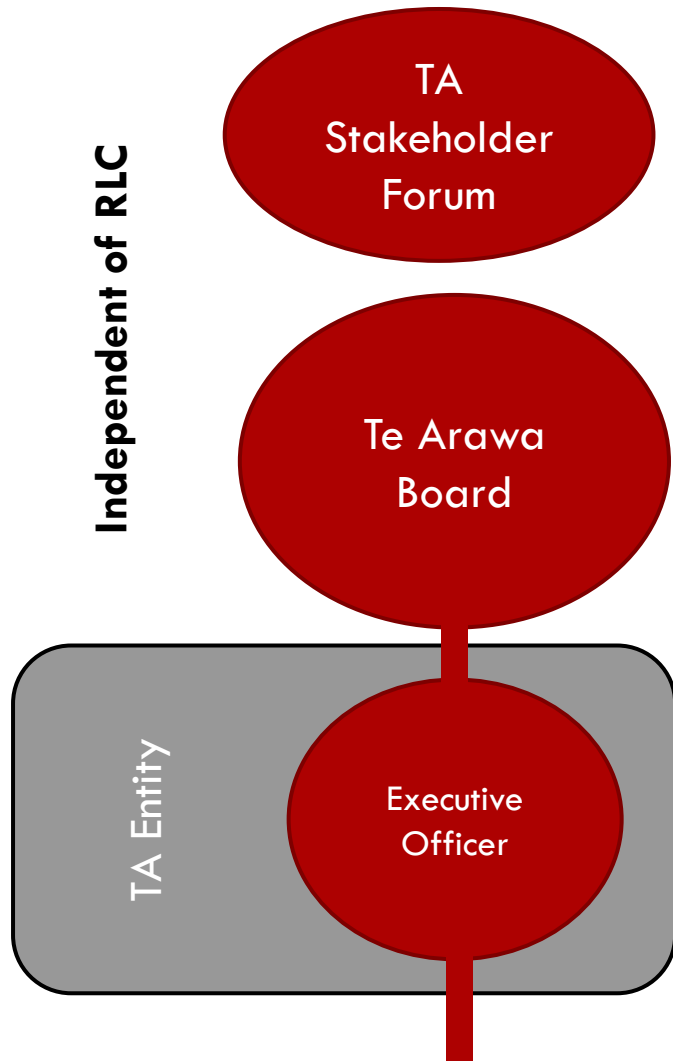
Purpose of Partnership



Value Created

Value Created	
Communication & Engagement	Strategic & Integrated Development of Rotorua
Effective Partnership	Information Sharing
Valuing Diversity, Culture & Heritage	Effective Compliance
Understanding & Appreciation	Co-Investment Opportunities

Te Arawa - Structure



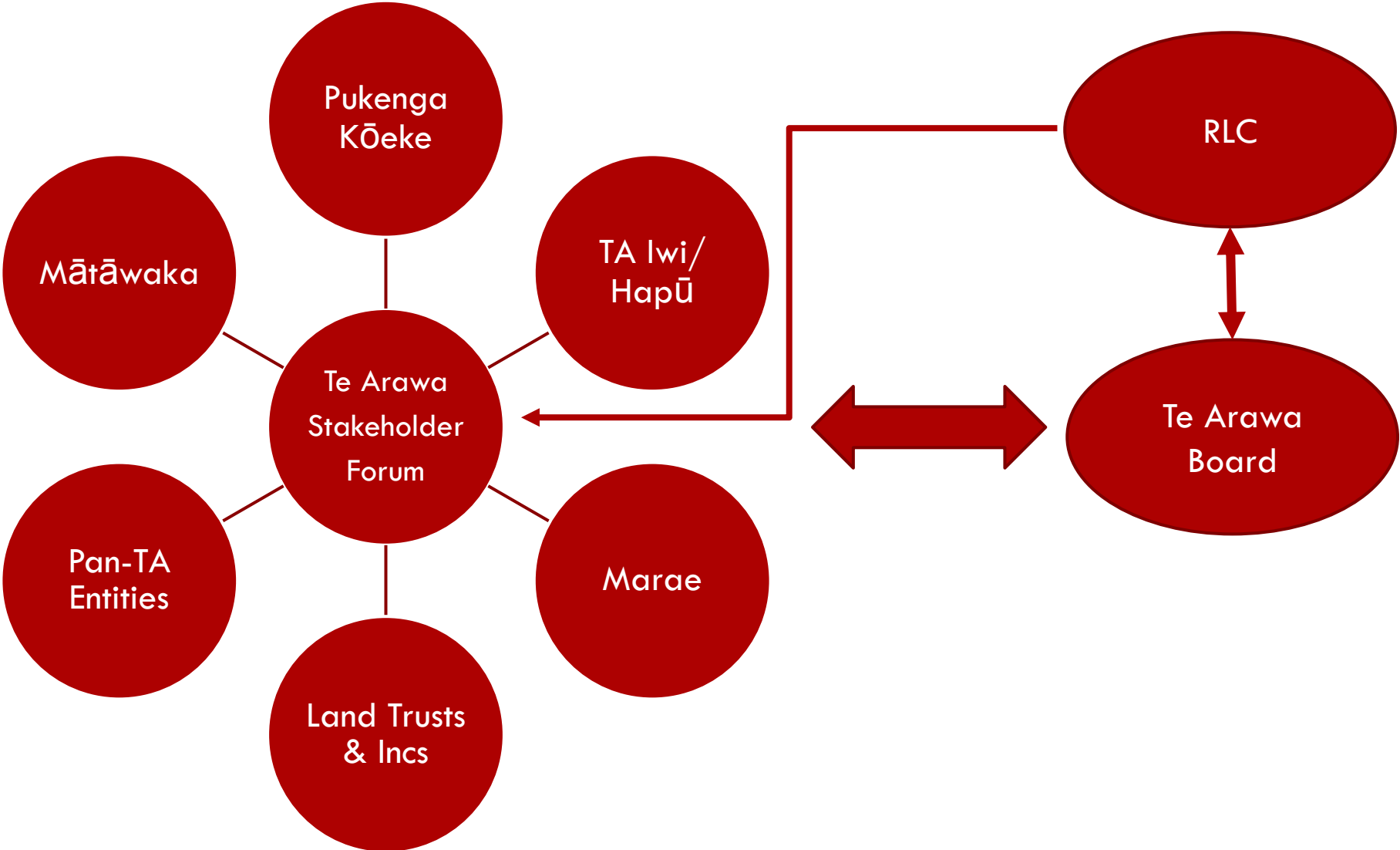
Key Role

- **Endorses Partnership MoU**
- **Monitors accountability of Board to Te Arawa**

- **Engages with RLC in spirit of partnership**
- **Represents TA 'collective' views in RLC decision making processes**
- **Strategic Planning & Integrated Development**
- **Input to Policy & Planning**
- **Monitoring RLC delivery of obligations to Māori**
- **Keeping RLC & Te Arawa informed**

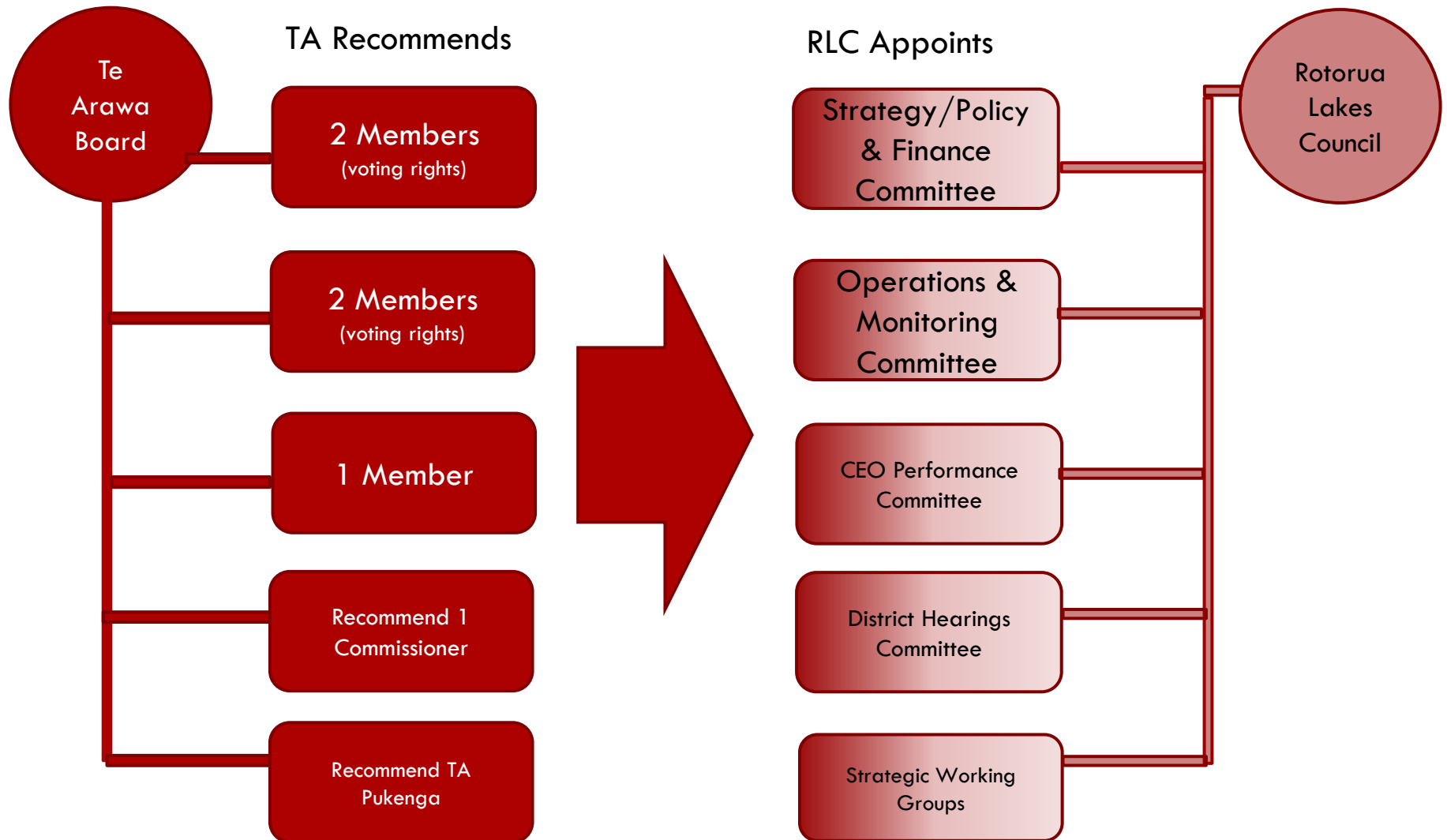
- **Exec officer supports the board**
- **TA Entity provides back office support to exec officer**

Partnership & Accountability

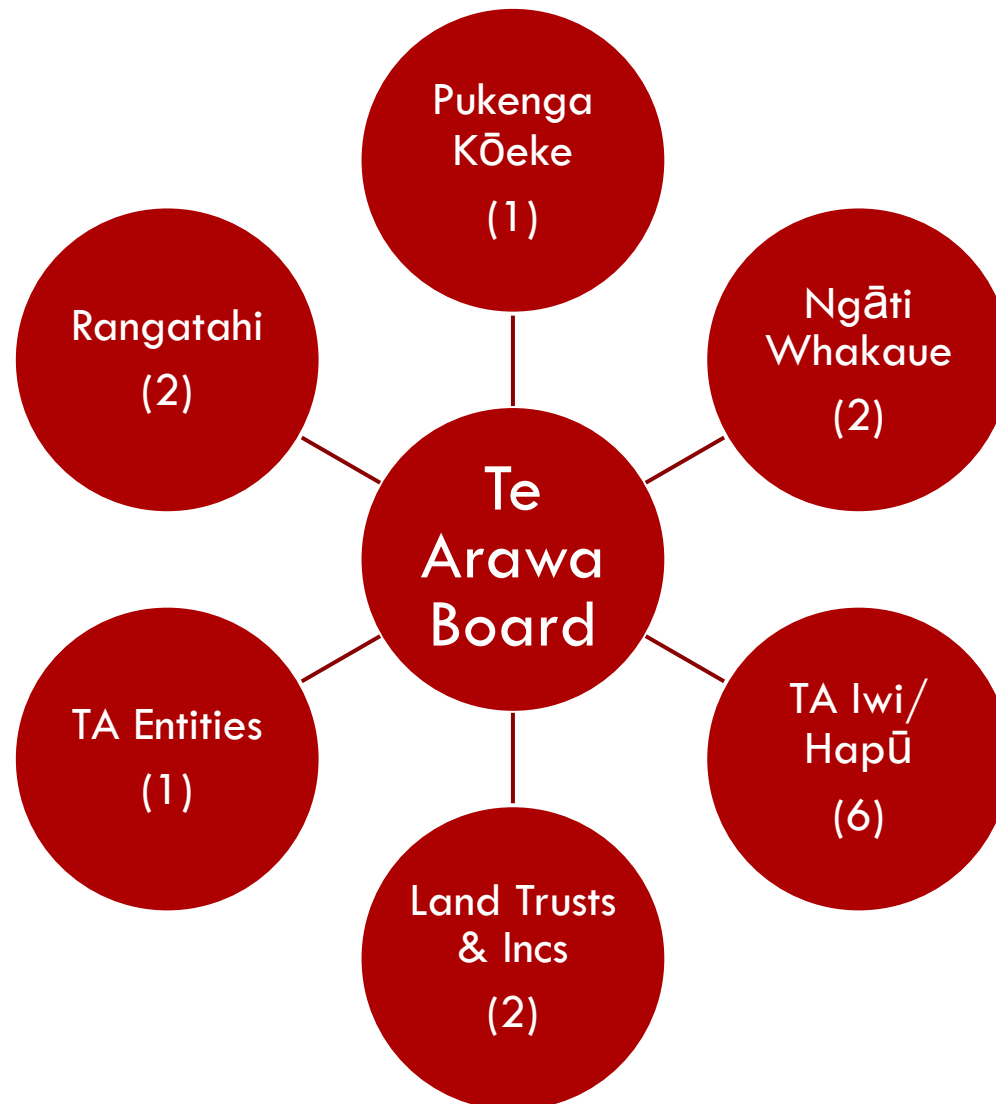


Input into Policy & Planning

14

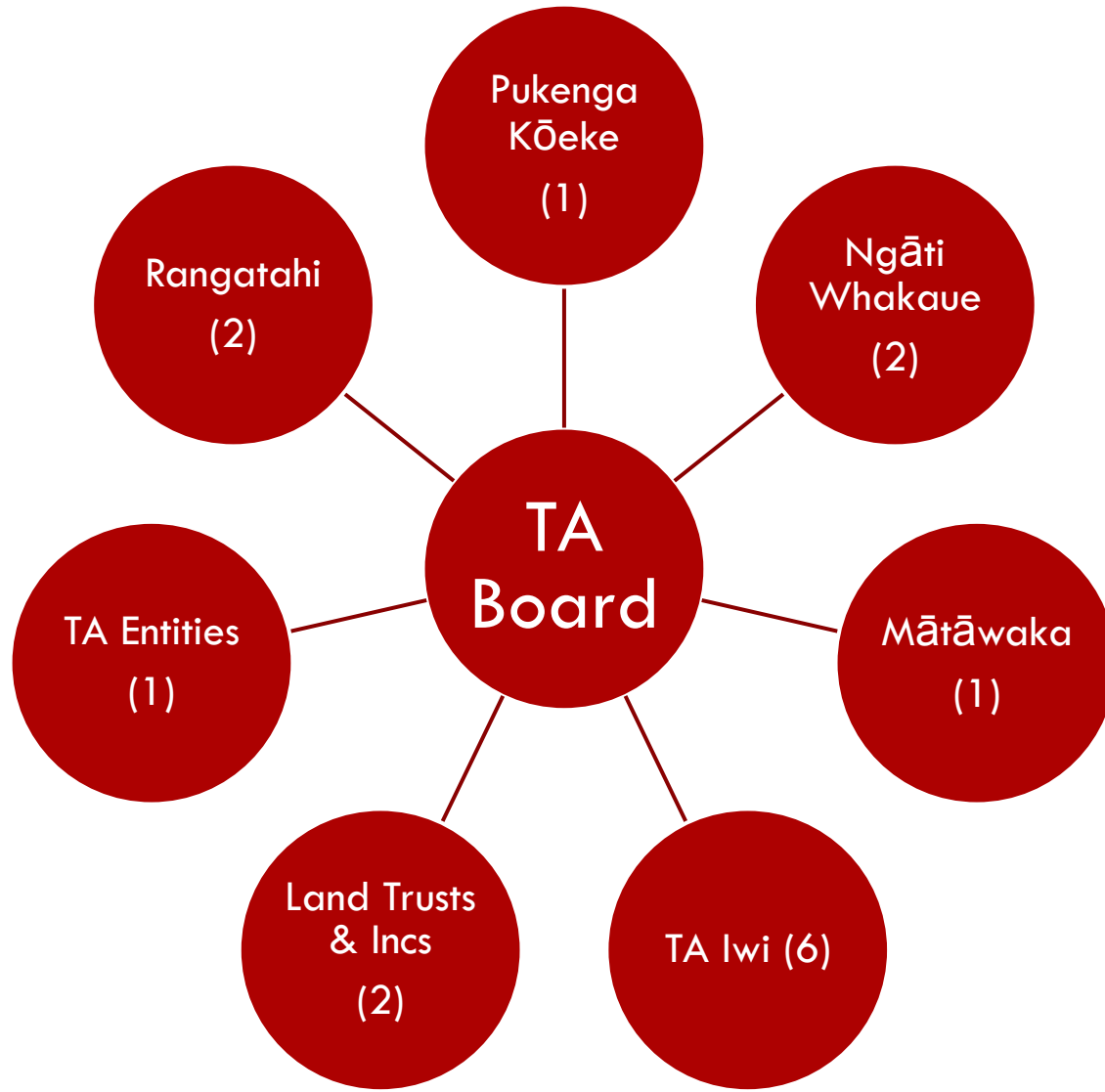


Board Representation – Option 1



- **14 members**
- **Members nominated & elected by Te Arawa whānui**
- **Mātāwaka not included but to be included from year 2 onwards**

Board Representation – Option 2



- **15 members**
- **Members nominated & elected by:**
 - **Te Arawa Whānui**
 - **Māori Ratepayers**
- **Mātāwaka included**

Model Development

17

Established clear understanding of:

- Situation
- Aspirations
- Model Options

Developed Model Options

Gathered feedback from iwi/ hapū

Deliver comprehensive recommendation to RLC endorsed by Te Arawa

1

...year process to develop, engage and refine model

9

...hui with Te Arawa hapū, iwi and stakeholders

18

...project group and TASC iwi member hui to progress model development

300

...people attended hui

\$28k

...cost to develop model and engage with Te Arawa

Community Consultation

18

- Te Arawa believe this is a major kaupapa for both Te Arawa and the wider community
- We feel it is only right that the Rotorua community has an opportunity to consider this proposal
- We welcome the opportunity to share this vision of partnership

*Today we can...
honour the past, empower the present,
and strengthen our future...*

*We believe in
“Tātau, Tātau - We Together”*