

# KEEPING your PIPES FLOWING

Wastewater that enters our network is mainly water, but also contains human waste, food scraps, fats, debris, chemicals and trade waste. Sewer overflows can affect the health of our community and waterways so we all need to do our part, protecting our wai (water) to reduce the frequency, volume and effects of overflows.

## LOOK AFTER THE HEALTH OF OUR COMMUNITY AND OUR WATERWAYS

### LAUNDRY TUBS AND STORMWATER DRAINS:

Don't pour hazardous waste such as paint, pesticides, solvents and used automobile oil down drains - dispose of by taking to landfill. Wash equipment and vehicles on unsealed ground to prevent polluted wastewater flowing into stormwater drains.

### KITCHEN SINK:

Cooking fats and oils can harden and block pipes if rinsed down your sink - allow these to cool and harden, then scrape into the bin.

### INDUSTRIAL ACTIVITIES:

A stormwater licence is required for all sites that undertake 'high risk activities' to prevent contaminated water entering waterways and threatening our freshwater ecosystems.

### TOILET:

Only flush pee, poo and paper. Small sanitary items can cause big issues - put ALL sanitary items, nappies, wipes (even flushable ones) dental floss etc. in the bin.

### STORMWATER DOWNPIPES:

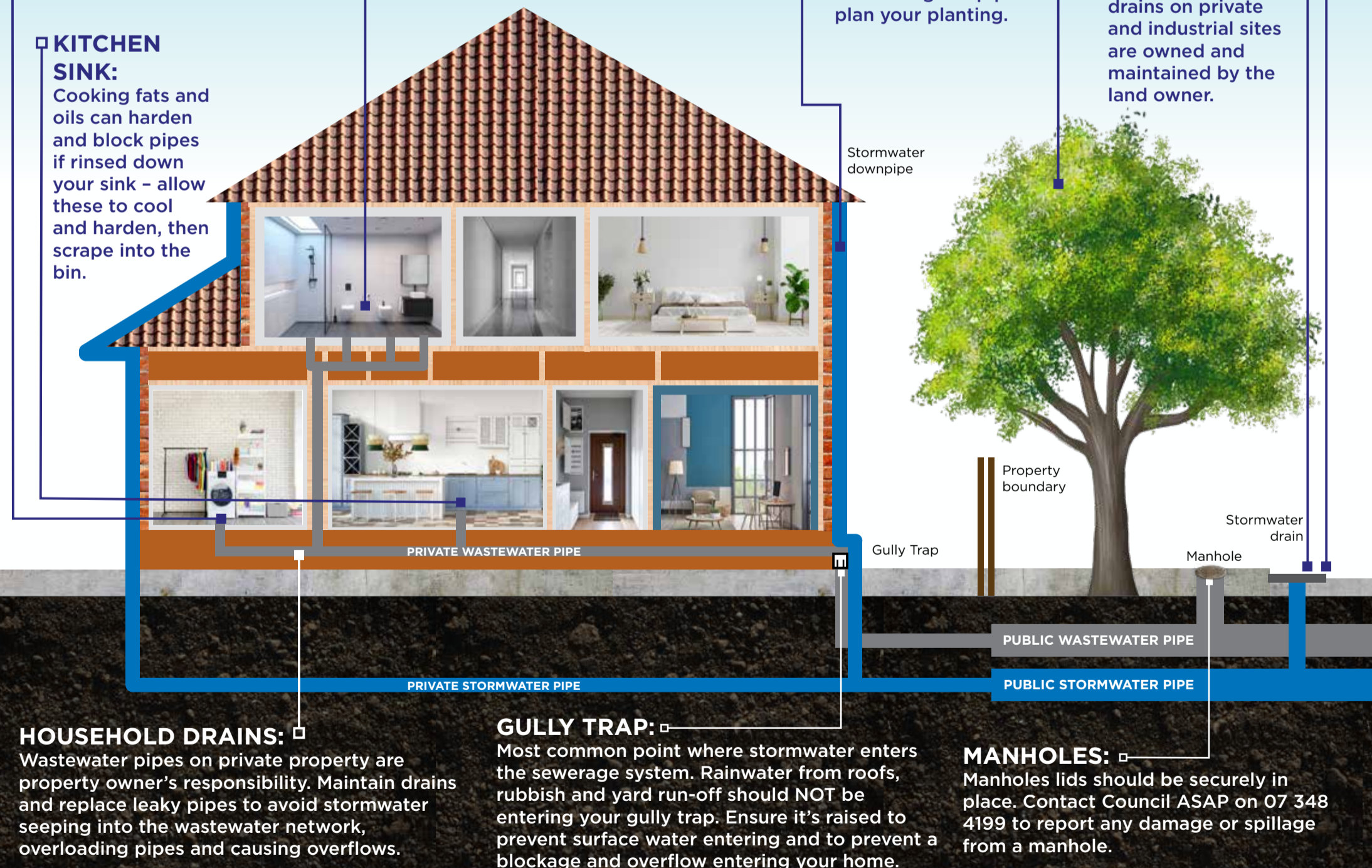
Are the property owner's responsibility - check your stormwater downpipe connects to the stormwater network not the wastewater network.

### TREE PLANTING:

Tree roots mature and can cause a blockage or breakage to pipes - plan your planting.

### STORMWATER NETWORK:

Is owned and maintained by Rotorua Lakes Council. Stormwater drains on private and industrial sites are owned and maintained by the land owner.



### HOUSEHOLD DRAINS:

Wastewater pipes on private property are property owner's responsibility. Maintain drains and replace leaky pipes to avoid stormwater seeping into the wastewater network, overloading pipes and causing overflows.

### GULLY TRAP:

Most common point where stormwater enters the sewerage system. Rainwater from roofs, rubbish and yard run-off should NOT be entering your gully trap. Ensure it's raised to prevent surface water entering and to prevent a blockage and overflow entering your home.

### MANHOLES:

Manholes lids should be securely in place. Contact Council ASAP on 07 348 4199 to report any damage or spillage from a manhole.

Do your part to protect the health of our  
community and Taiao (Environment).

REPORT ANY PUBLIC WASTEWATER ISSUES IMMEDIATELY  
TO COUNCIL ON ☎ 07 348 4199 AND CONTACT A DRAIN  
LAYER FOR PIPE ISSUES ON PERSONAL PROPERTY.



**ROTORUA** LAKES  
COUNCIL  
Te Kaunihera o ngā Roto o Rotorua