

Road Safety with Ruru

Kia Haumaru te Haere o Rotorua Hapori



TE KAUNIHERA O NGĀ ROTO
O ROTORUA

MEET RURU



Kia ora,
ko Ruru tenei

Ruru is an owl. Ruru wants you to be safe when you're on and near roads.

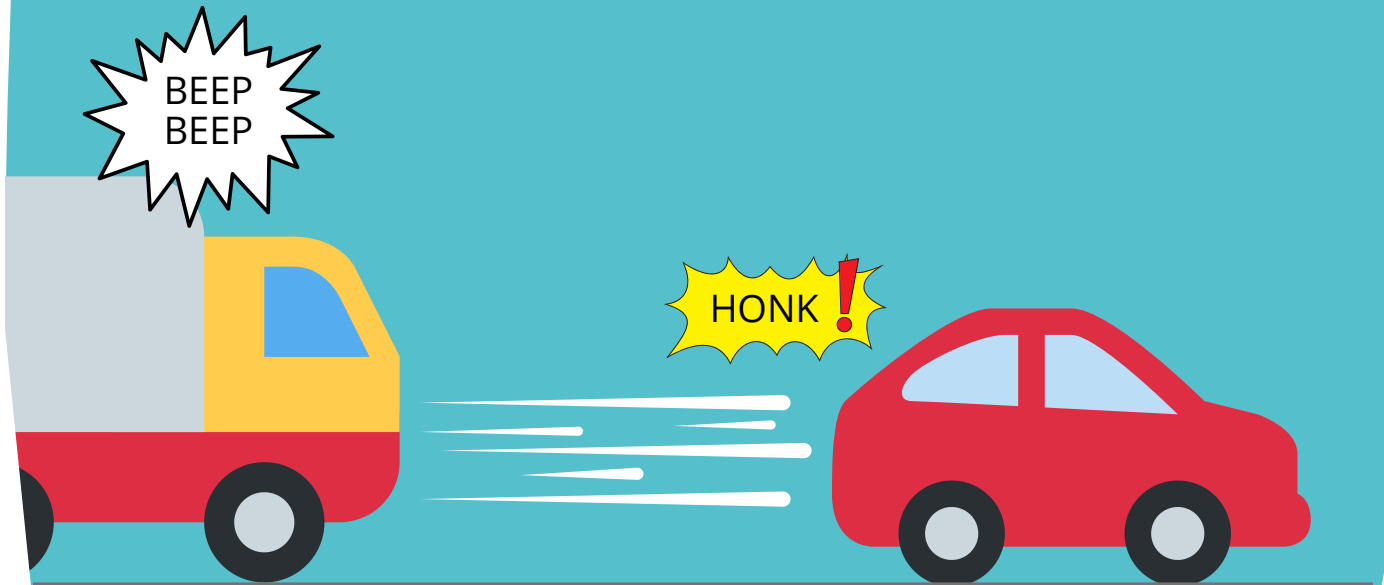
Ruru travels in lots of different ways. How do you get around?



Poke your puku with your
fingers. It's soft and
squishy eh.



Cars are not soft and squishy.
Cars are big and fast and they
can hurt you.



Did you know that lots of little
people get hurt on our roads
every year?



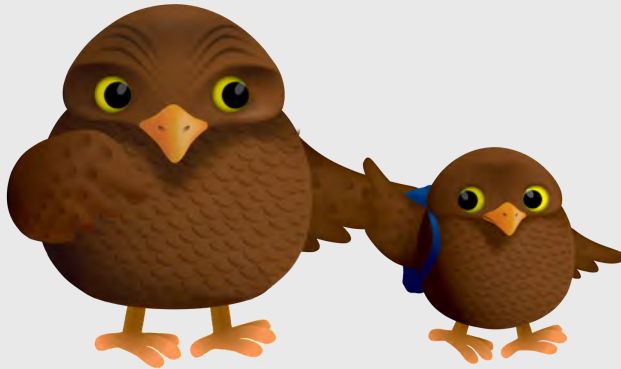
Ruru doesn't want you to get hurt

Here are some things you
can do to keep safe when
in a car, or near a road.

Whakarongo mai
tamariki. This is
important stuff!



If you are walking, biking or on a scooter you should have a big person with you.



They can teach you how to be safe on and near the road.

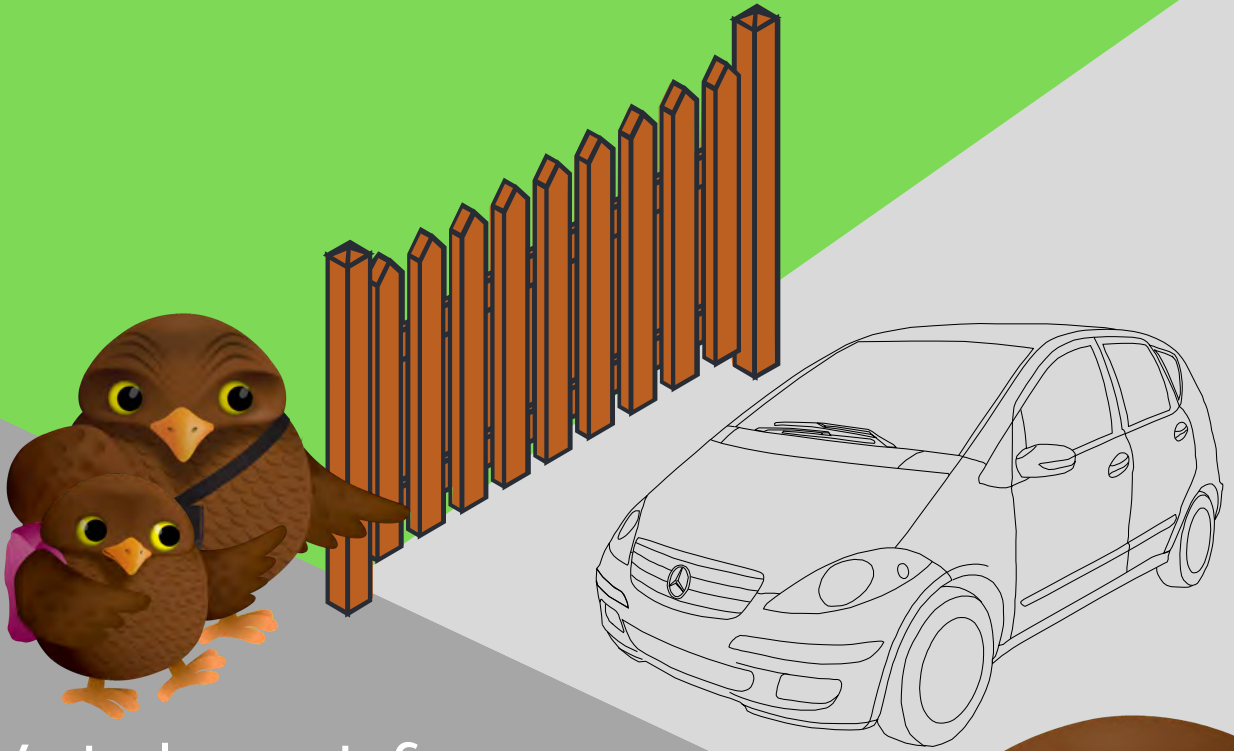
ALWAYS HOLD HANDS

with your big person when
you are near traffic

Hold my
hand Koro



WHEN YOU ARE WALKING



Watch out for
sneaky driveways!



IF YOU ARE CROSSING THE ROAD



Wait for there to be no traffic before you cross.
And remember to hold a big persons hand.

WHEN YOU ARE IN A VEHICLE



Seatbelts on for everyone

Ka kite

You might spot me on the some signs
so give me a wave

