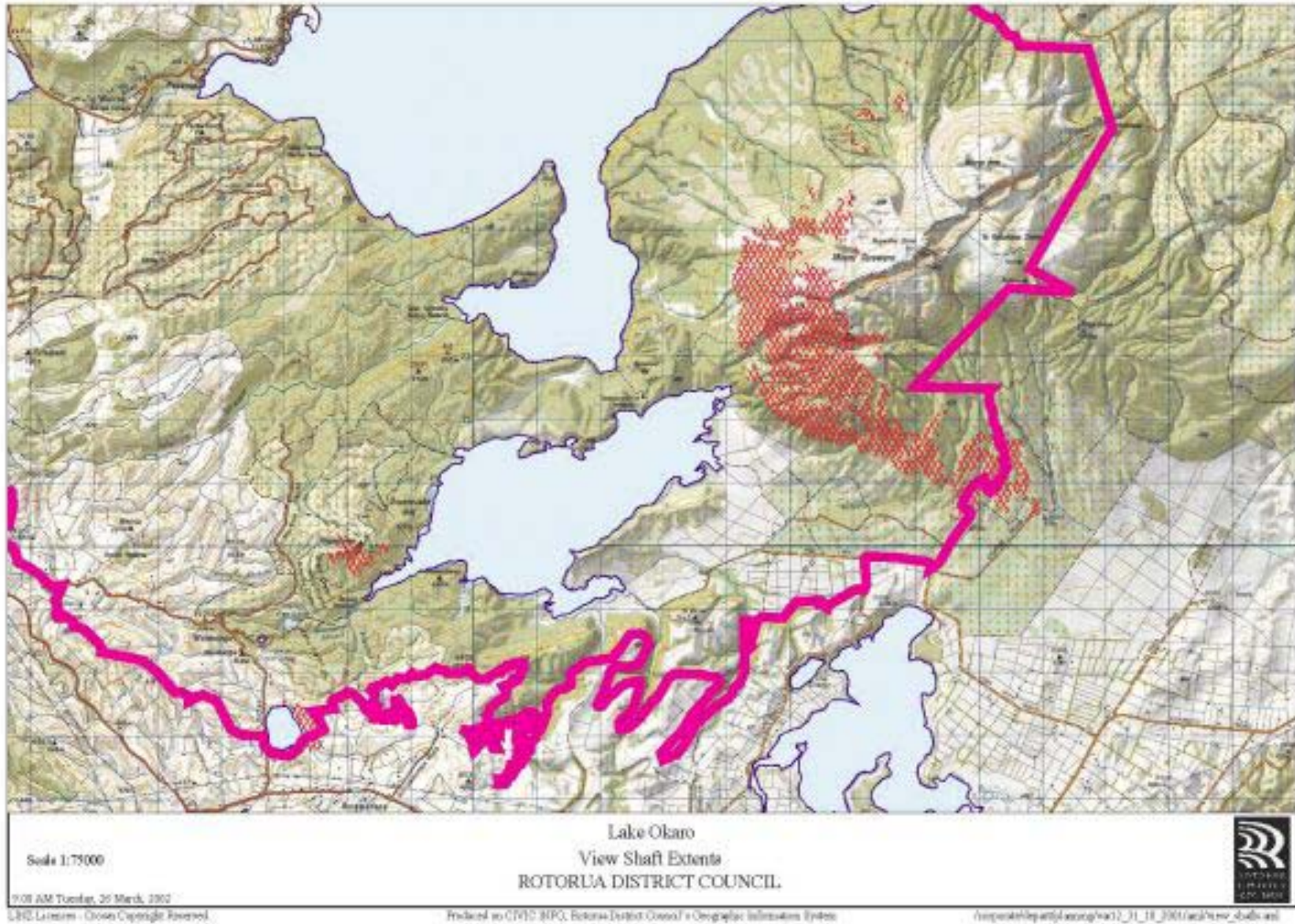


4.2 Okaro

The following information sheets relate to the Okaro watershed *catchment*

**O
K
A
R
O**



Okaro A

VIEWER LOCATION

At the base of the boat ramp on the reserve at Lake Okaro. U16 067172

DESCRIPTION

The foreground is dominated by the grassed edge of the *lake*. The middle ground is provided by the *lake* and a range of exotic tree plantings around the edge of the *lake*. The background and skyline is dominated by exotic trees breaking into the sky line.

THREATS

- Foreshore planting impeding the view from the reserve across the *lake*
- Exotic plantings on the far side of the *lake* being removed and creating a lack of consistency in the sky line

OPPORTUNITIES

- Enhancement of the exotic tree plantings on the far side of the *lake* to achieve some consistency in the form of the plantings around the edges of the *lake*.

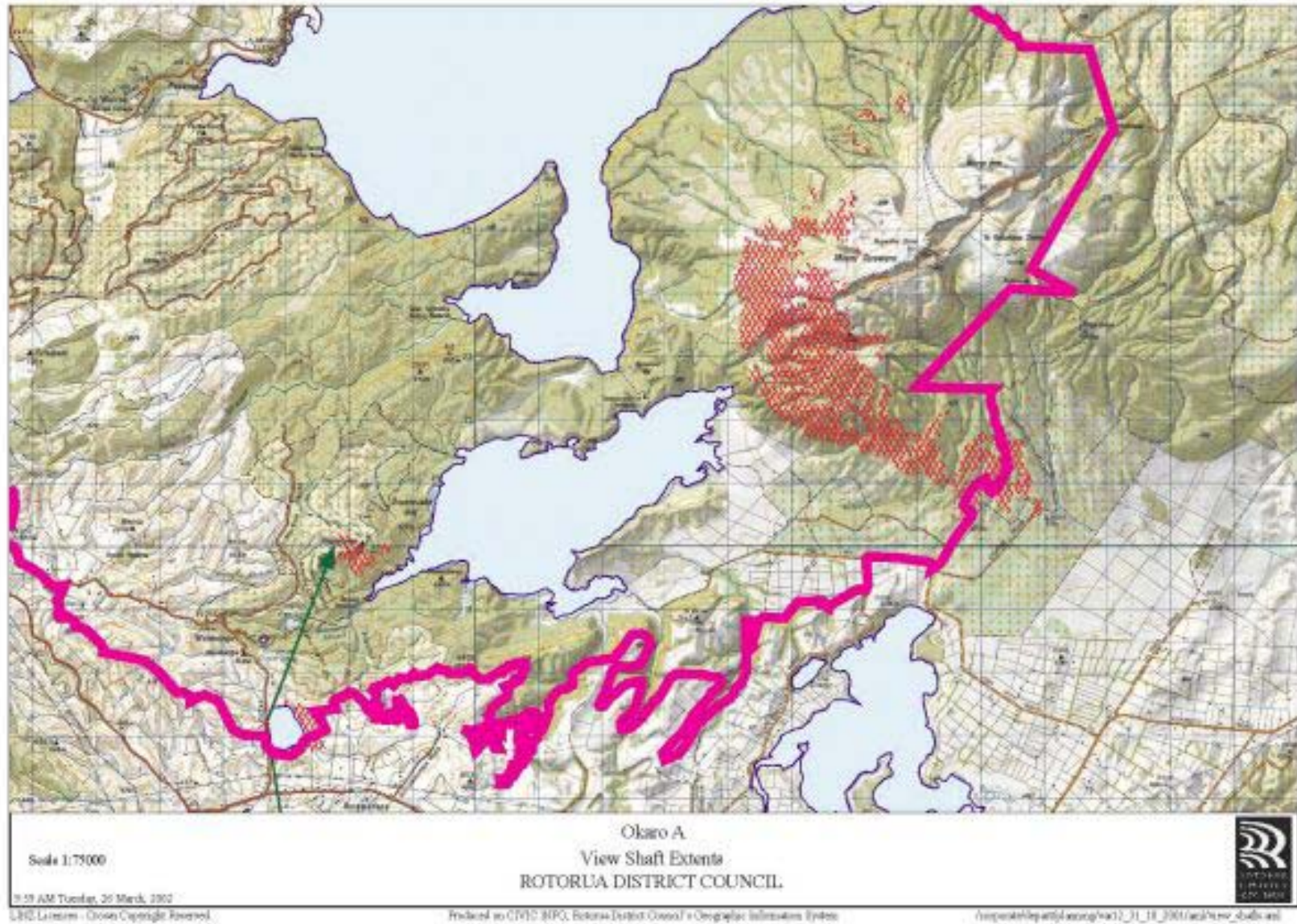
RESPONSE

- Encourage the enhancement of the plantings around the *lake* edge to provide consistency and to lessen the amount of area in the *catchment* which is under grazing pressure from stock.
- Encourage the establishment of exotic forestry in the *catchment* to allow for consistent land use in the *catchment*.

SCORE

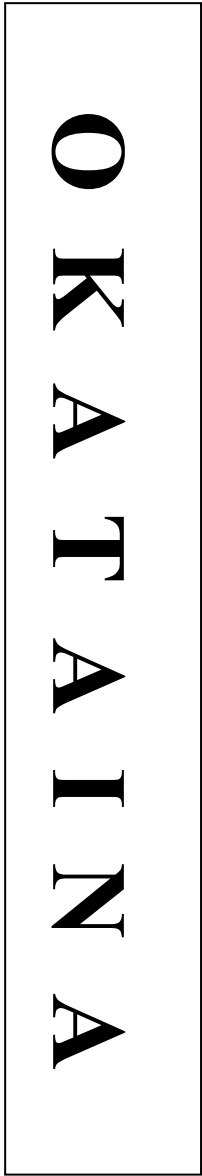
Score: 18

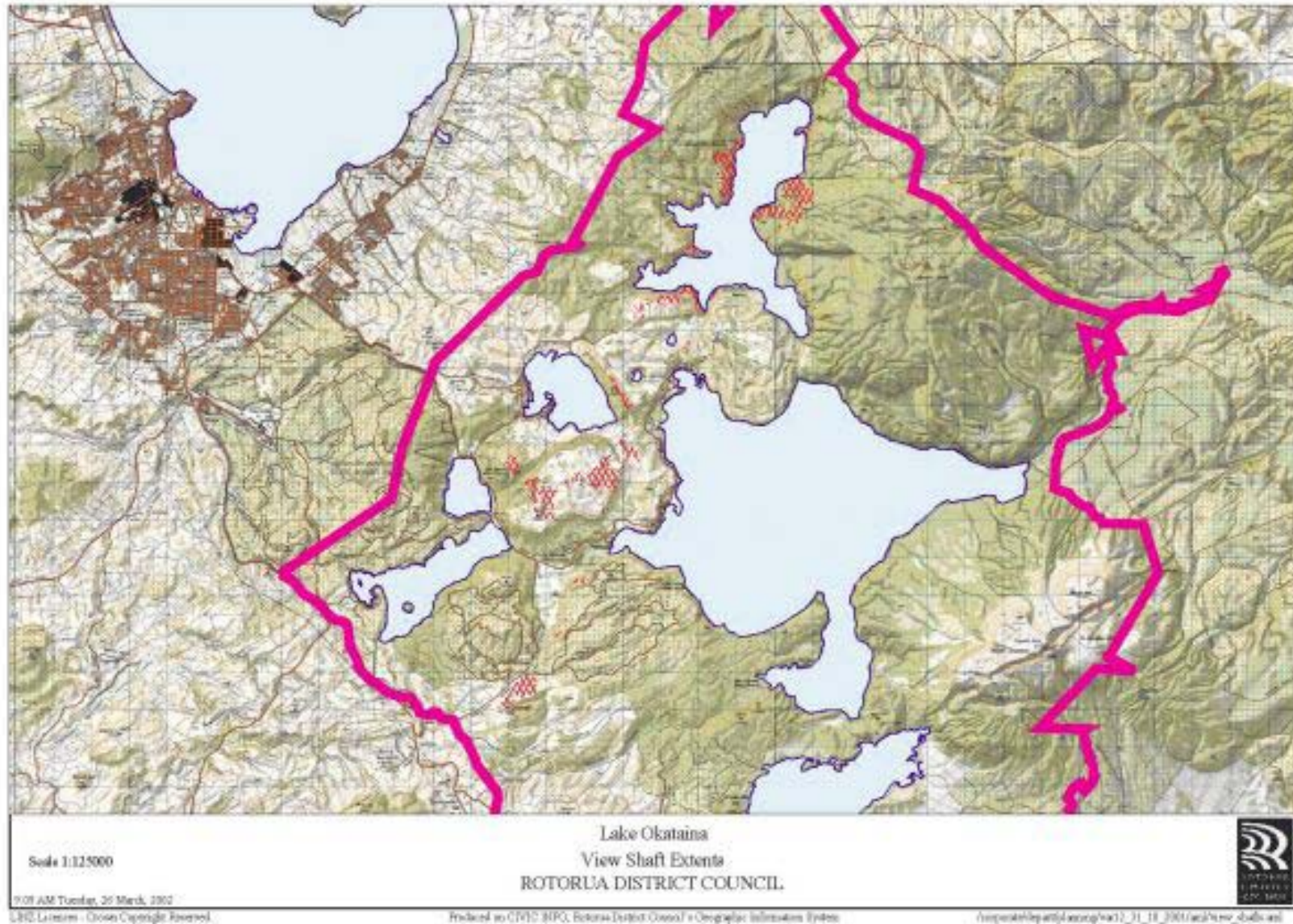




4.4 Okataina

The following information sheets relate to the Okataina watershed *catchment*.





Okataina A

VIEWER LOCATION

The carpark at the end of Okataina Road, Lake Okataina. V16 109390

DESCRIPTION

The view is framed by native vegetation down to the *water* line on both sides of the *lake* in the middle distance and at the far end of the *lake*. The view is dominated by native vegetation from the *water* line to the sky line through the depth of the view. At the far end of the *lake* the focal point is a small area of pastoral area which contrasts with the darker native vegetation. The foreground includes the beach and several cultural influences which lessen the natural character of the view.

THREATS

- The clearance of the native vegetation, interrupting the enclosure of the *catchment*
- The *development* of the *land* at the far end of the *lake*
- The increase of the cultural influence in the foreground
- The introduction of different land uses into the *catchment*

OPPORTUNITIES

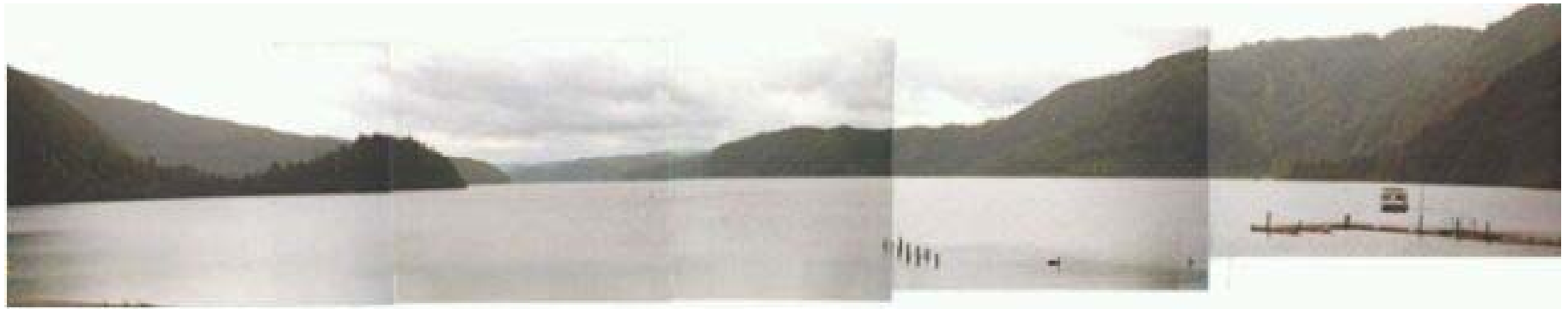
- The revegetation of the pastoral *land* at the far end of the *lake*

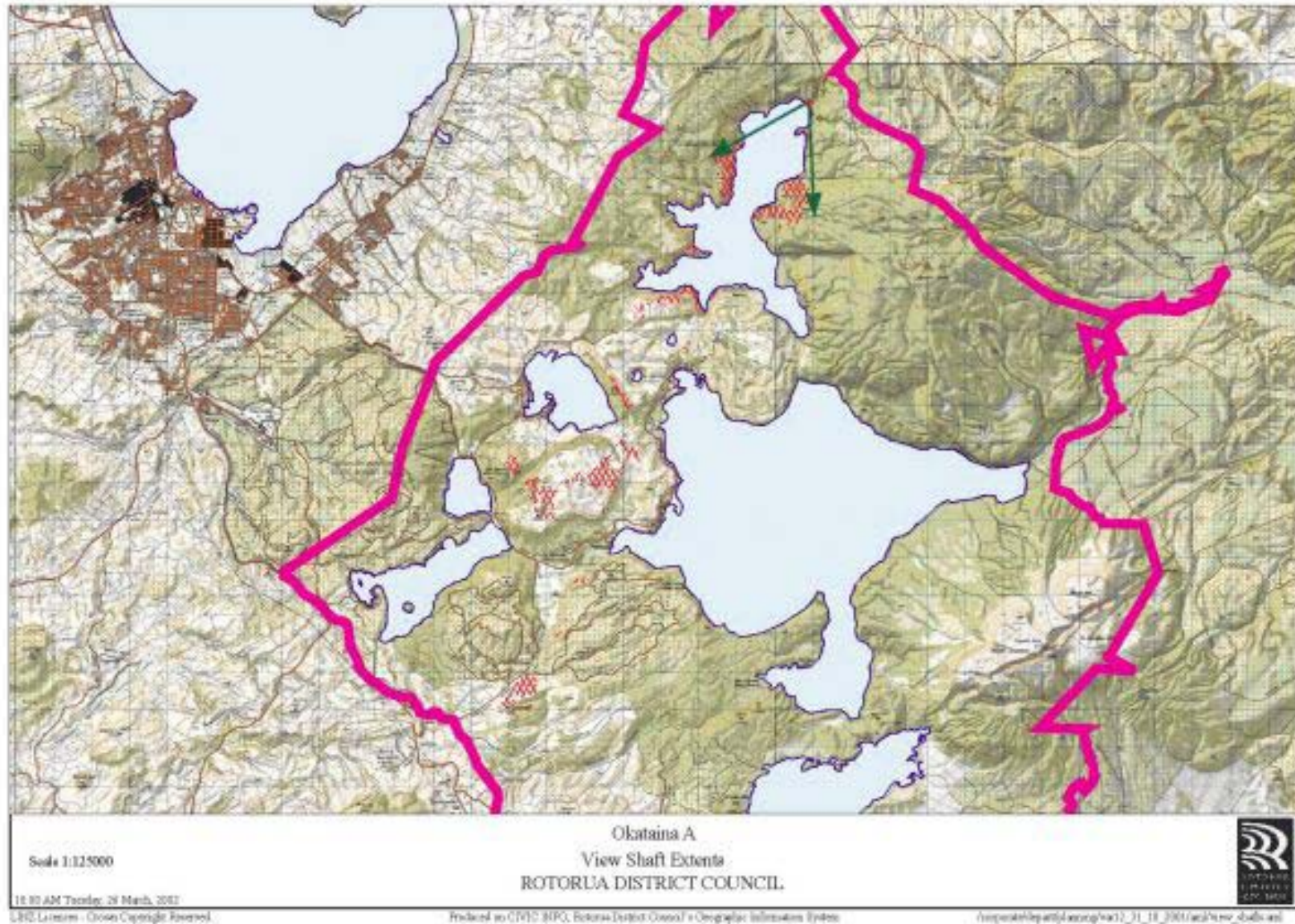
RESPONSE

- To protect the native vegetation in the *catchment* from clearance
- To encourage the revegetation of the pastoral *land* at the end of the *catchment* with native vegetation
- To ensure that the view shaft is protected from *development*

SCORE

Score: 24

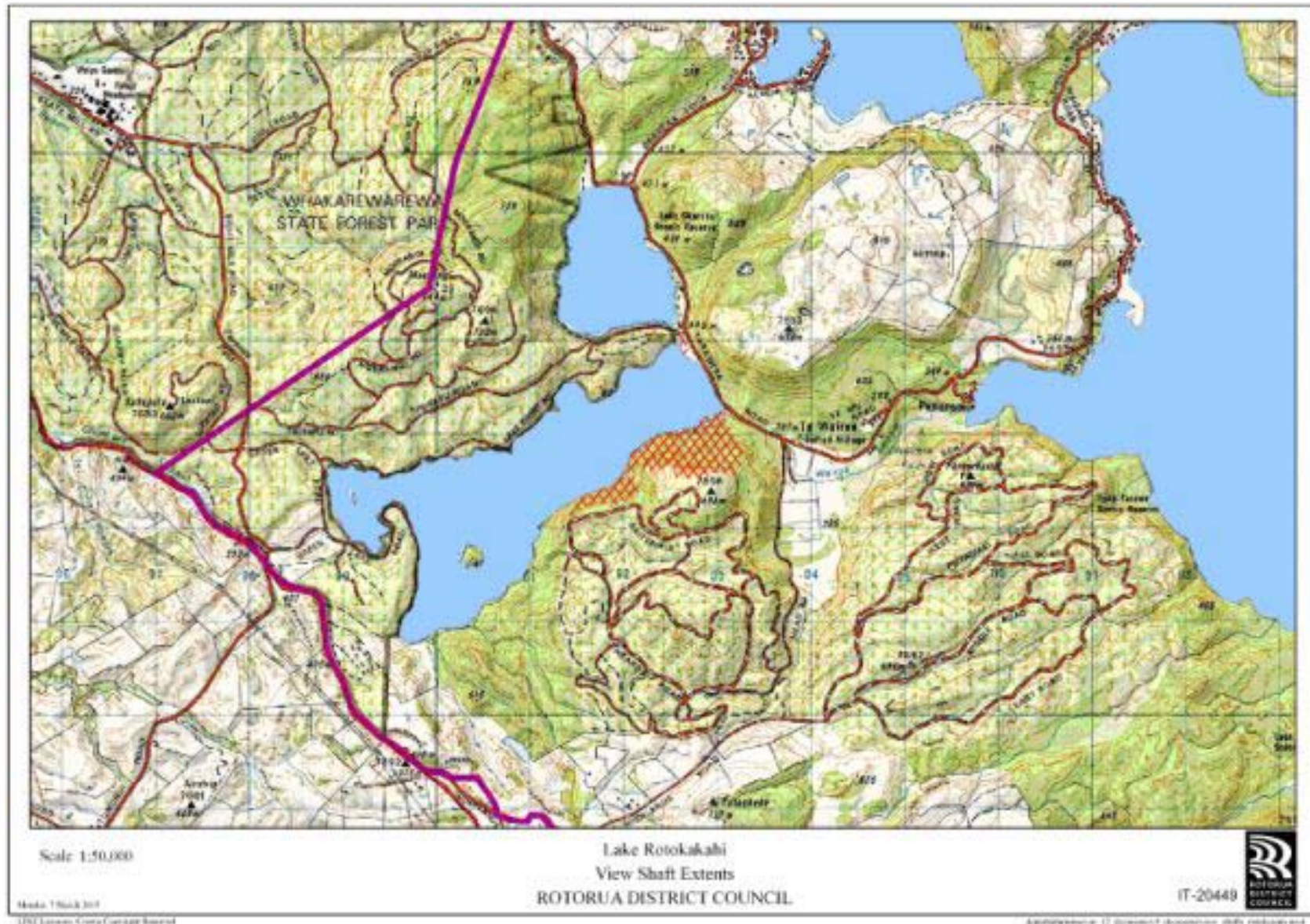




4.5 Rotokakahi (Green Lake)

The following information sheets relate to the Rotokakahi watershed *catchment*.

ROTOKAKAHI



Rotokakahi A

VIEWER LOCATION

Look out on Tarawera Road on the ridge between Lakes Rotokakahi and Tikitapu. U16 027281

DESCRIPTION

The view shaft is made up of a strong foreground, dominated by vegetation very close to the viewing point and a strong background with a flat top hill dominating the focal point. A small amount of the *lake* can be *seen* in the middle distance.

THREATS

- Further encroachment into the view shaft of the vegetation in the foreground
- The clearance of native vegetation on the hill in the focal point of the view shaft

OPPORTUNITIES

- The management of the vegetation in the foreground to ensure no further encroachment into the view shaft
- The opening up of the view shaft, especially the middle distance, by the removal of the some of the vegetation in the foreground

RESPONSE

- To manage the vegetation in the foreground to ensure that the view shaft is retained or improved
- To ensure the protection of the native vegetation in the background

SCORE

Score: 20



