

Organisational Charts

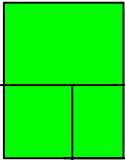
As at 6 March 2023

Pg. No.	Area	Pg. No.	Area
1.	Chief Executive's Group	28.	Communications
2.	CE's Group	29.	Design & Production
3.	Te Arawa Partnership	30.	Digital Channel & Content
4.	Community Wellbeing	31.	Marketing
5.	Active and Engaged Communities	32.	Relationships & Governance
6.	Community Safety	33.	Infrastructure & Environmental Solutions
7.	Community & Regulatory Services	34.	Infrastructure & Environmental
8.	Culture, Heritage & Mahi Toi	35.	Infrastructure Growth & Performance Planning
9.	Business Support	36.	Land Development Engineering
10.	Events Hub	37.	Infrastructure Networks Performance
11.	Museum	38.	3 Waters Services
12.	Education	39.	Capital Programmes
13.	Sir Howard Morrison Centre	40.	Transport Infrastructure Networks
14.	Te Aka Mauri	41.	Environmental Health Performance
15.	Business Development & Support	42.	Laboratory Services
16.	Customer Experiences	43.	Safe & Sustainable Journeys
17.	Heritage & Research	44.	Waste & Climate Change
18.	Adult Learning, Programmes & Promotions	45.	Organisational Enablement
19.	Youth & Early Learning	46.	Finance & Business Performance
20.	Thriving Communities	47.	Information Solutions
21.	District Development	48.	Information Solutions
22.	Growth & Development	49.	Information Solutions
23.	Integrated Planning & Development	50.	Customer Solutions
24.	Integrated Planning & Development	51.	Legal & Property
25.	District Leadership & Democracy	52.	People & Organisational Development
26.	Corporate Strategy & Planning	53.	PMO & Risk Office
27.	Marketing & Communications		

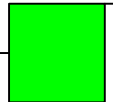
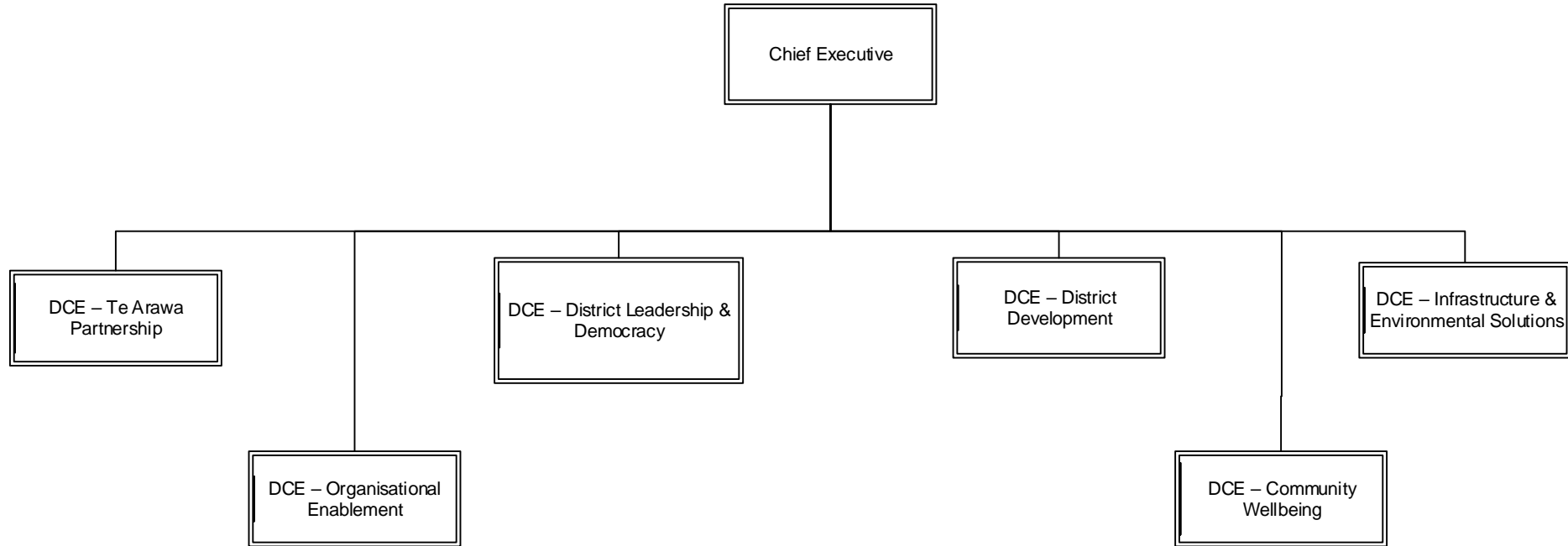
Areas of Responsibility:

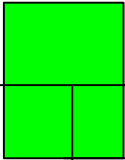
Clint Brickhill

Jesse Jarlov

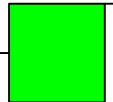
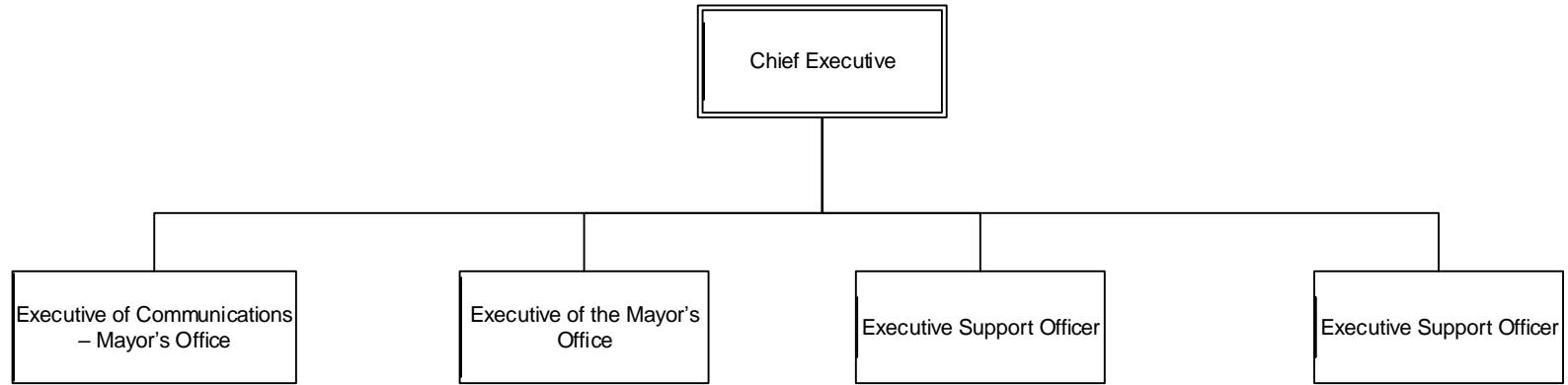


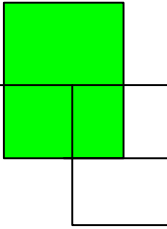
CHIEF EXECUTIVE'S GROUP



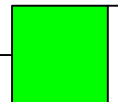
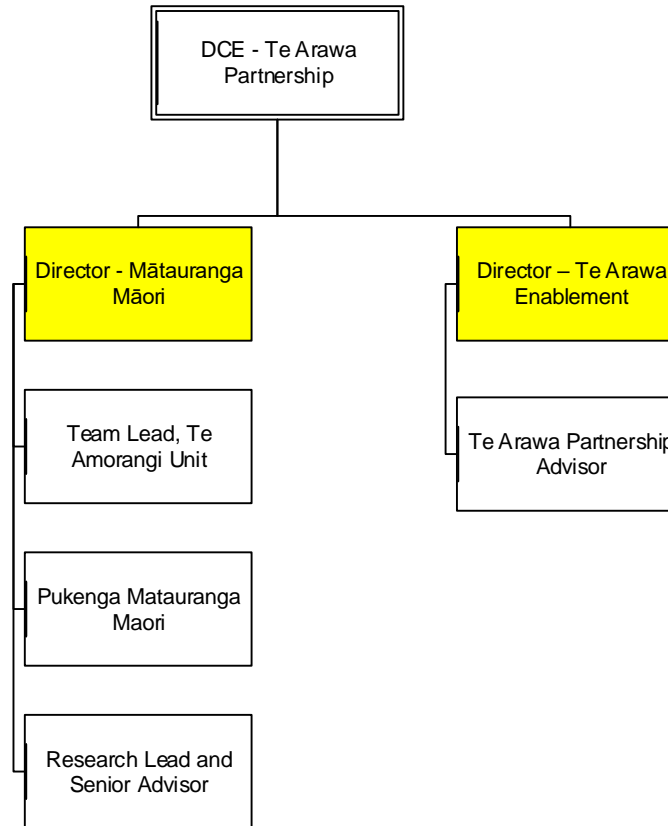


CHIEF EXECUTIVE'S GROUP

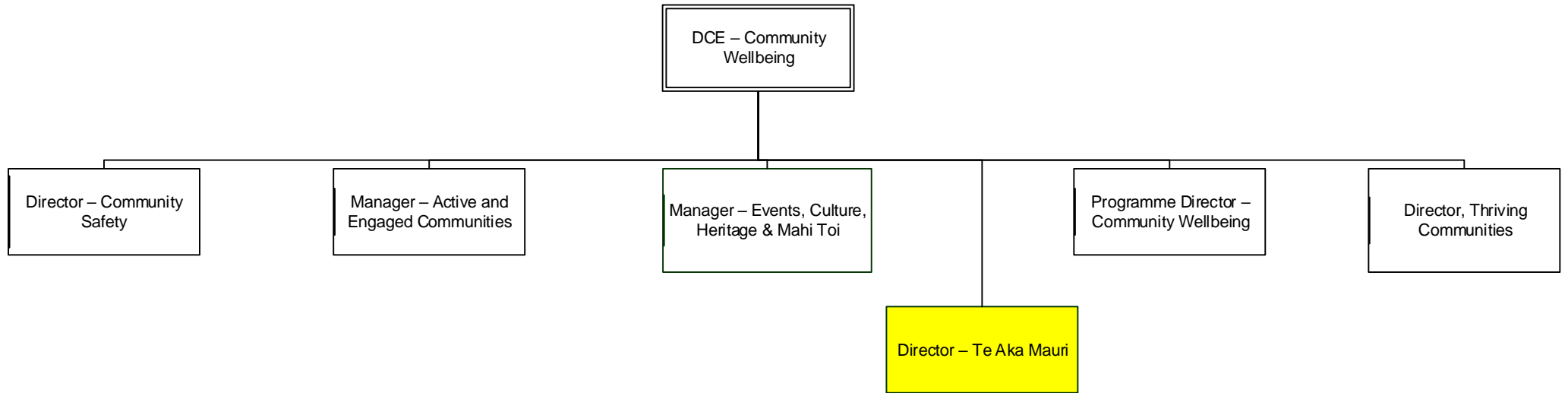




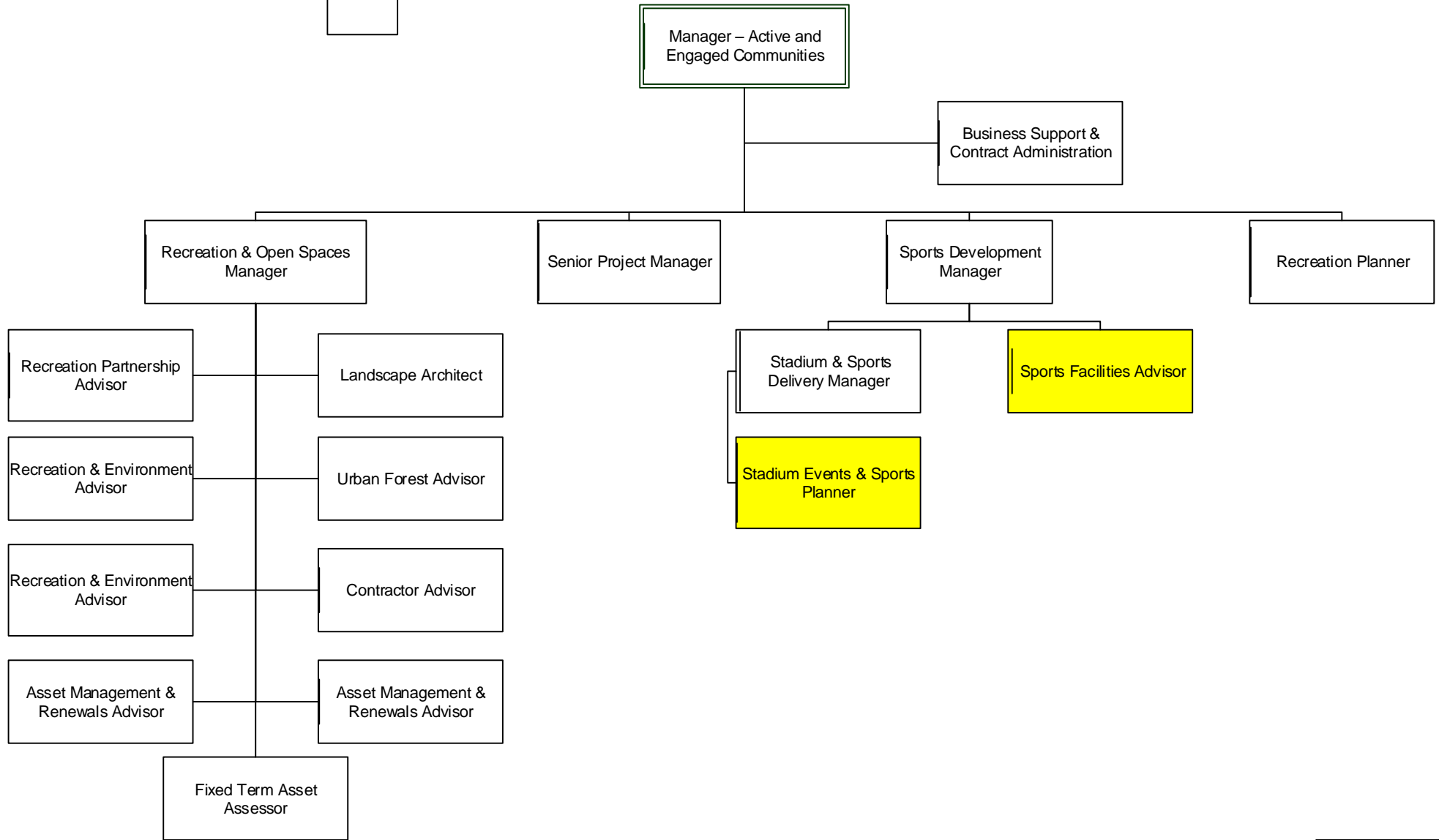
TE ARAWA PARTNERSHIP

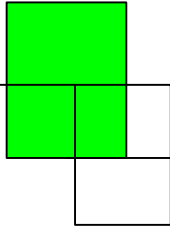


COMMUNITY WELLBEING

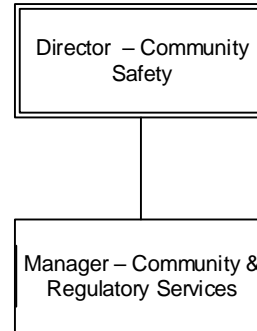


COMMUNITY WELLBEING – ACTIVE & ENGAGED COMMUNITIES

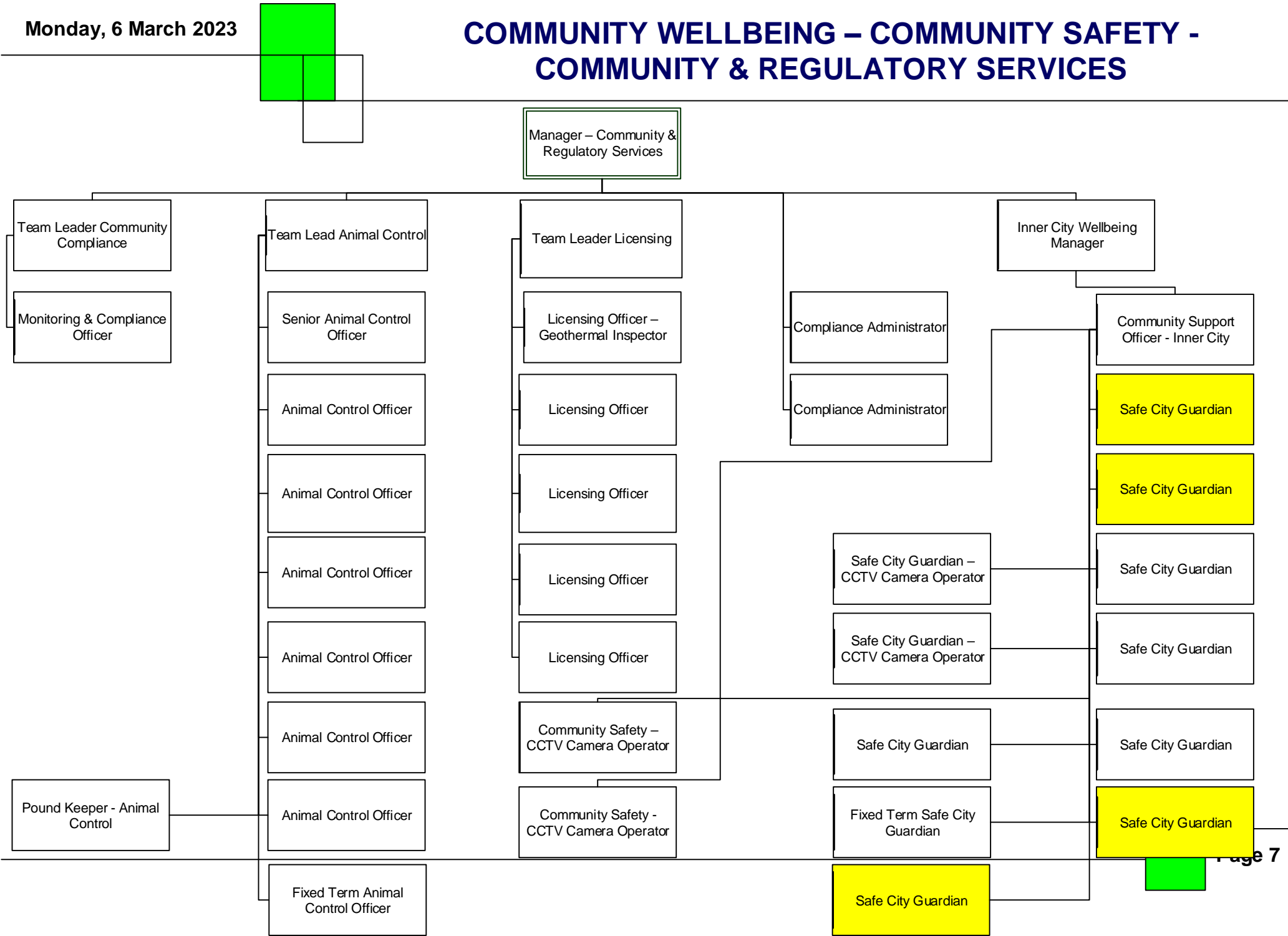




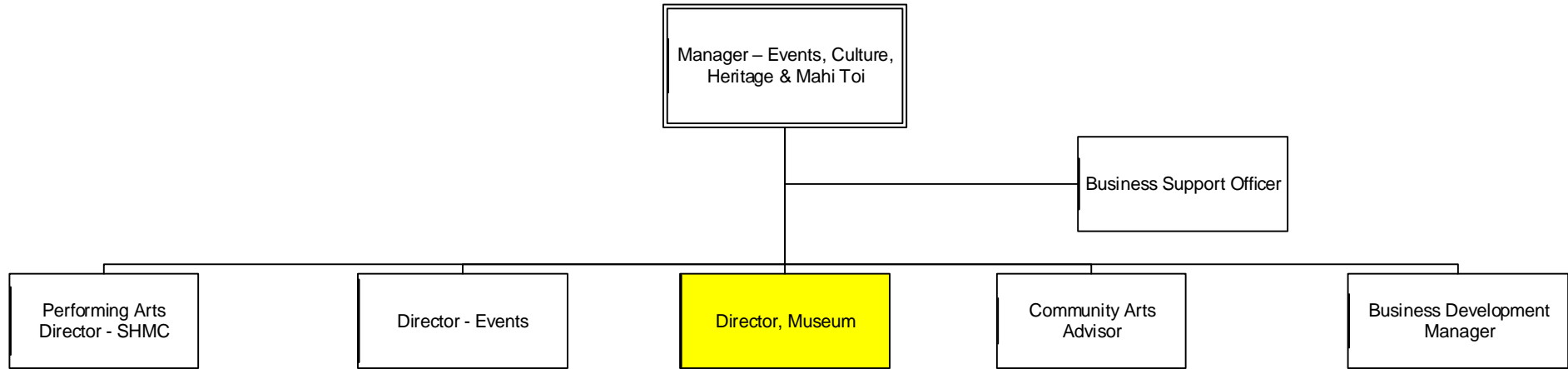
COMMUNITY WELLBEING – COMMUNITY SAFETY

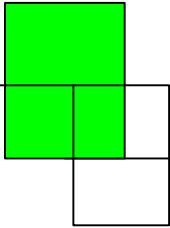


COMMUNITY WELLBEING – COMMUNITY SAFETY - COMMUNITY & REGULATORY SERVICES

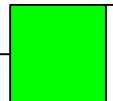
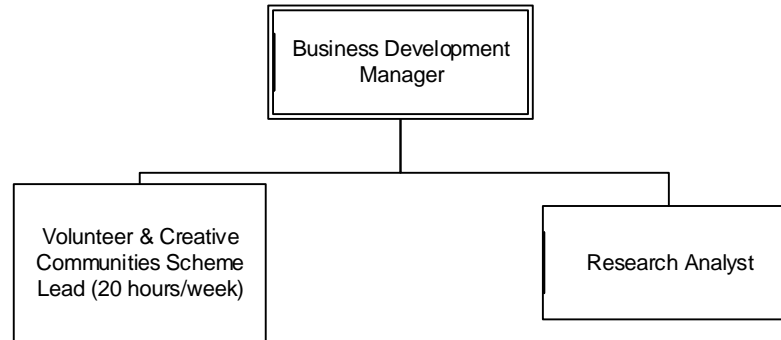


COMMUNITY WELLBEING – EVENTS, CULTURE, HERITAGE & MAHI TOI

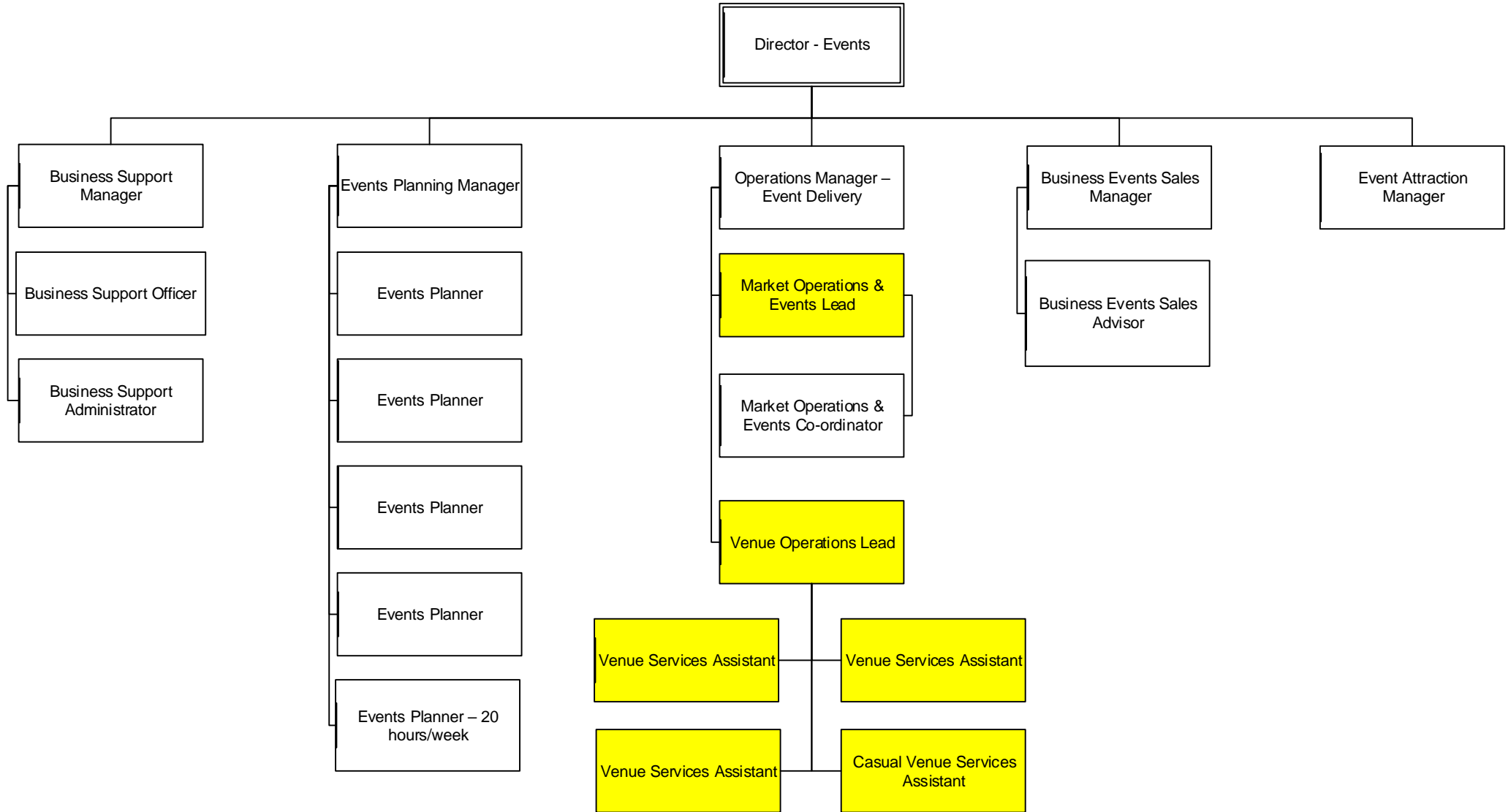


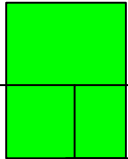


COMMUNITY WELLBEING – EVENTS, CULTURE, HERITAGE & MAHI TOI - BUSINESS SUPPORT

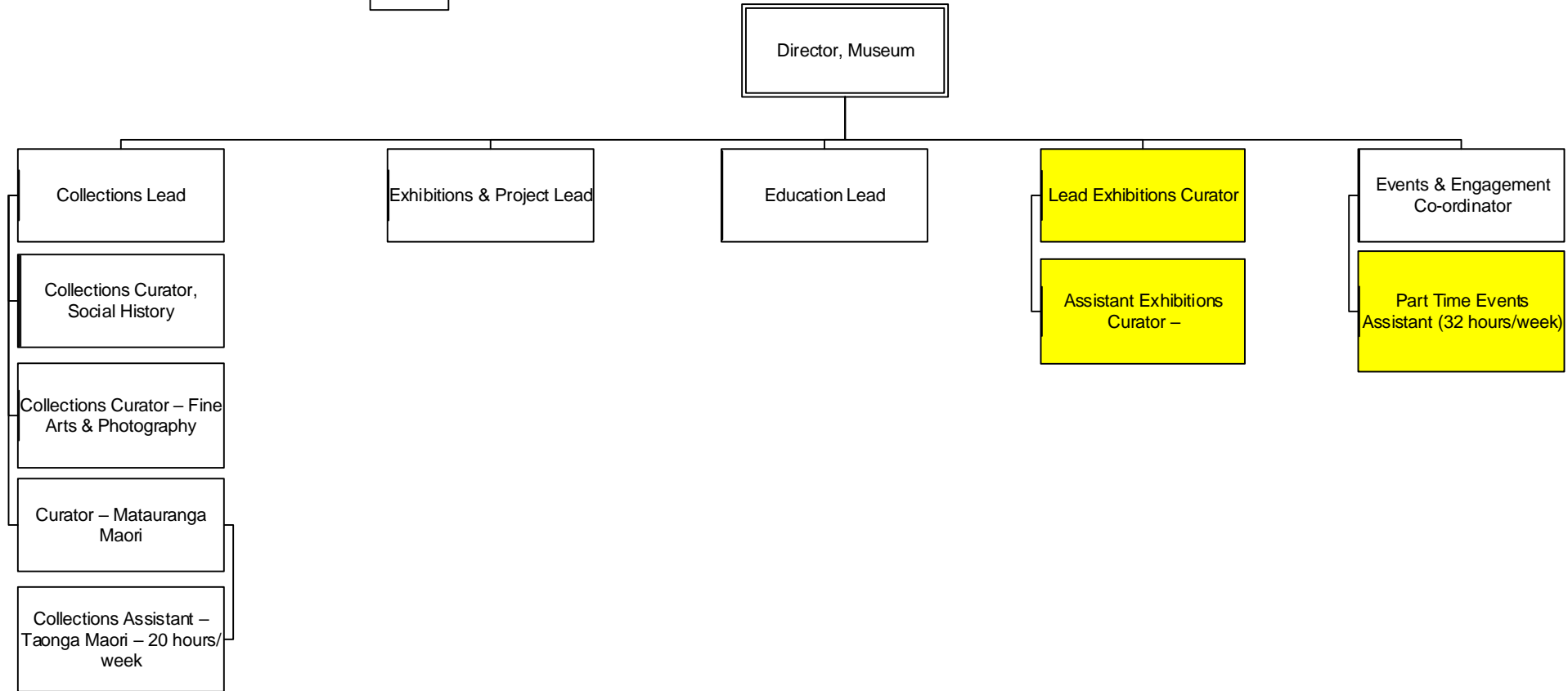


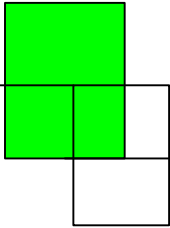
COMMUNITY WELLBEING – EVENTS, CULTURE, HERITAGE & MAHI TOI – EVENTS HUB



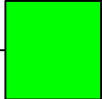
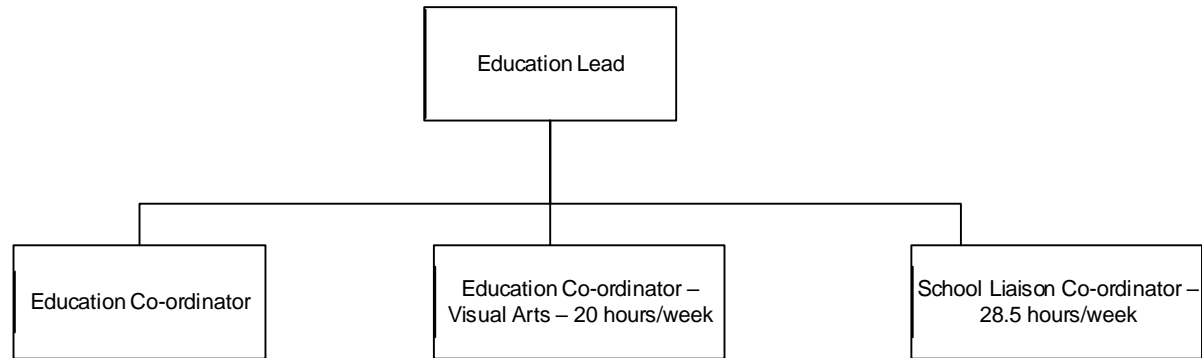


COMMUNITY WELLBEING – EVENTS, CULTURE, HERITAGE & MAHI TOI - MUSEUM OF ART & HISTORY

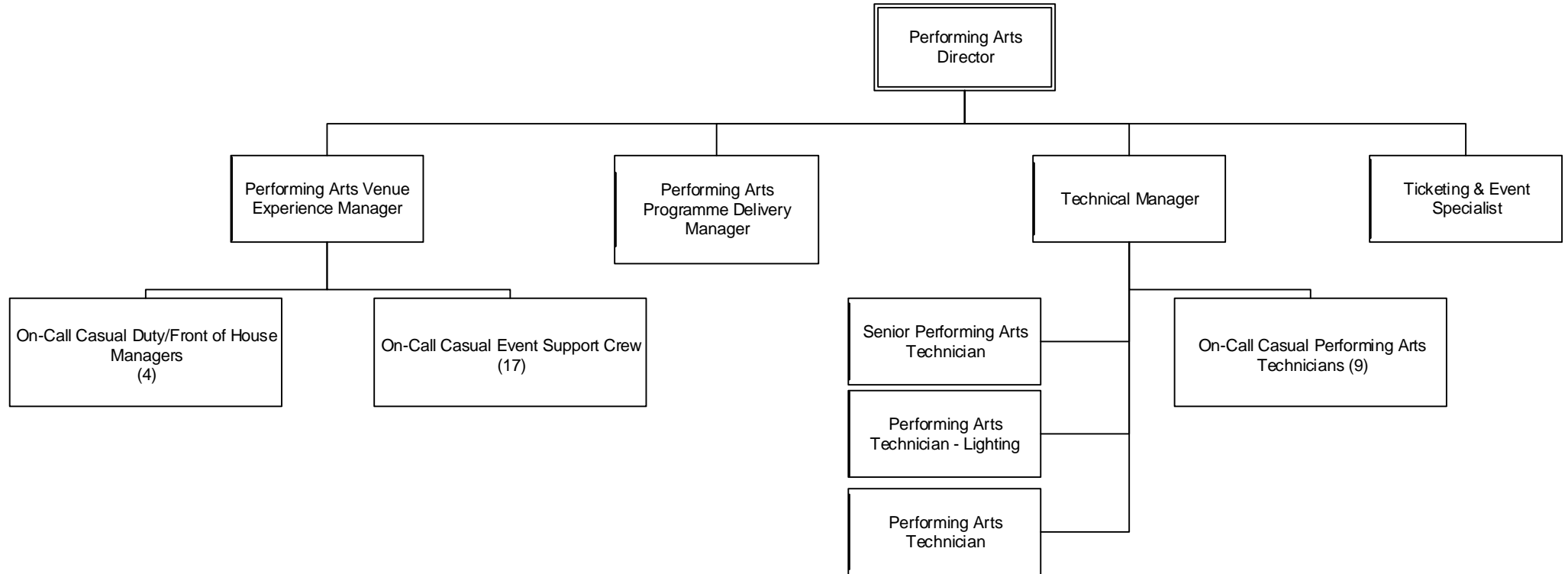




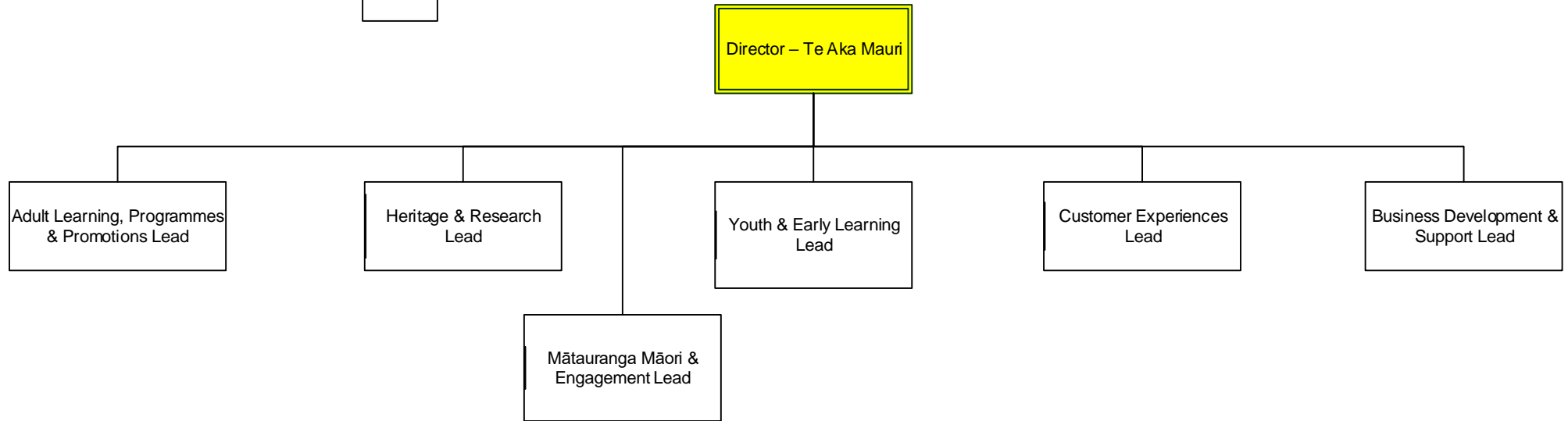
COMMUNITY WELLBEING – EVENTS, CULTURE, HERITAGE & MAHI TOI – MUSEUM - EDUCATION



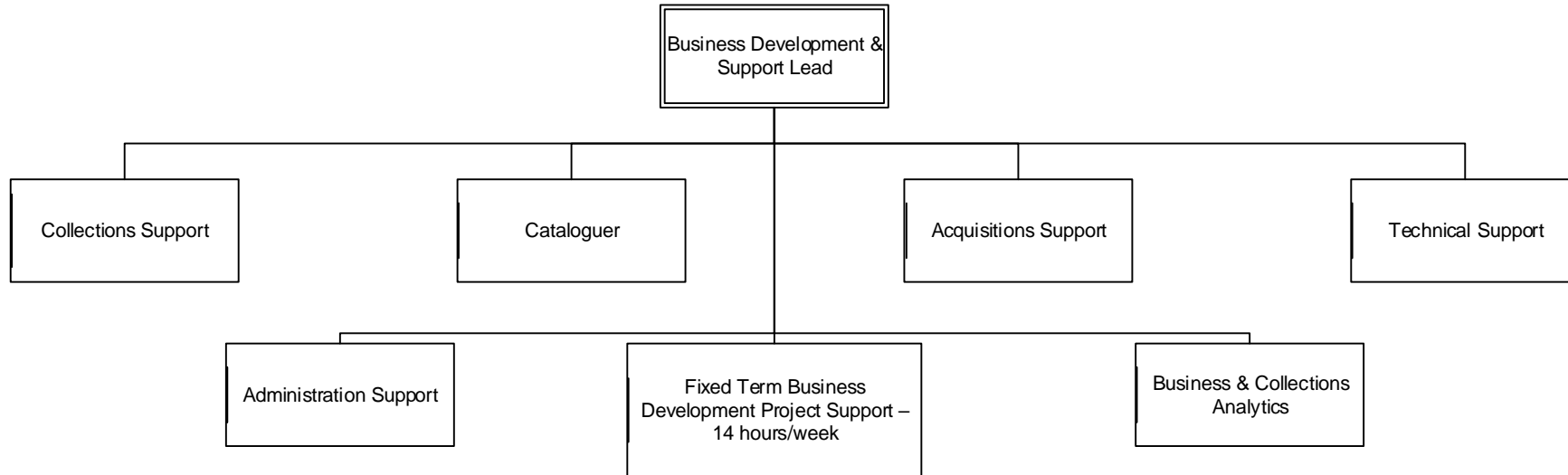
COMMUNITY WELLBEING –EVENTS, CULTURE, HERITAGE & MAHI TOI – SIR HOWARD MORRISON CENTRE



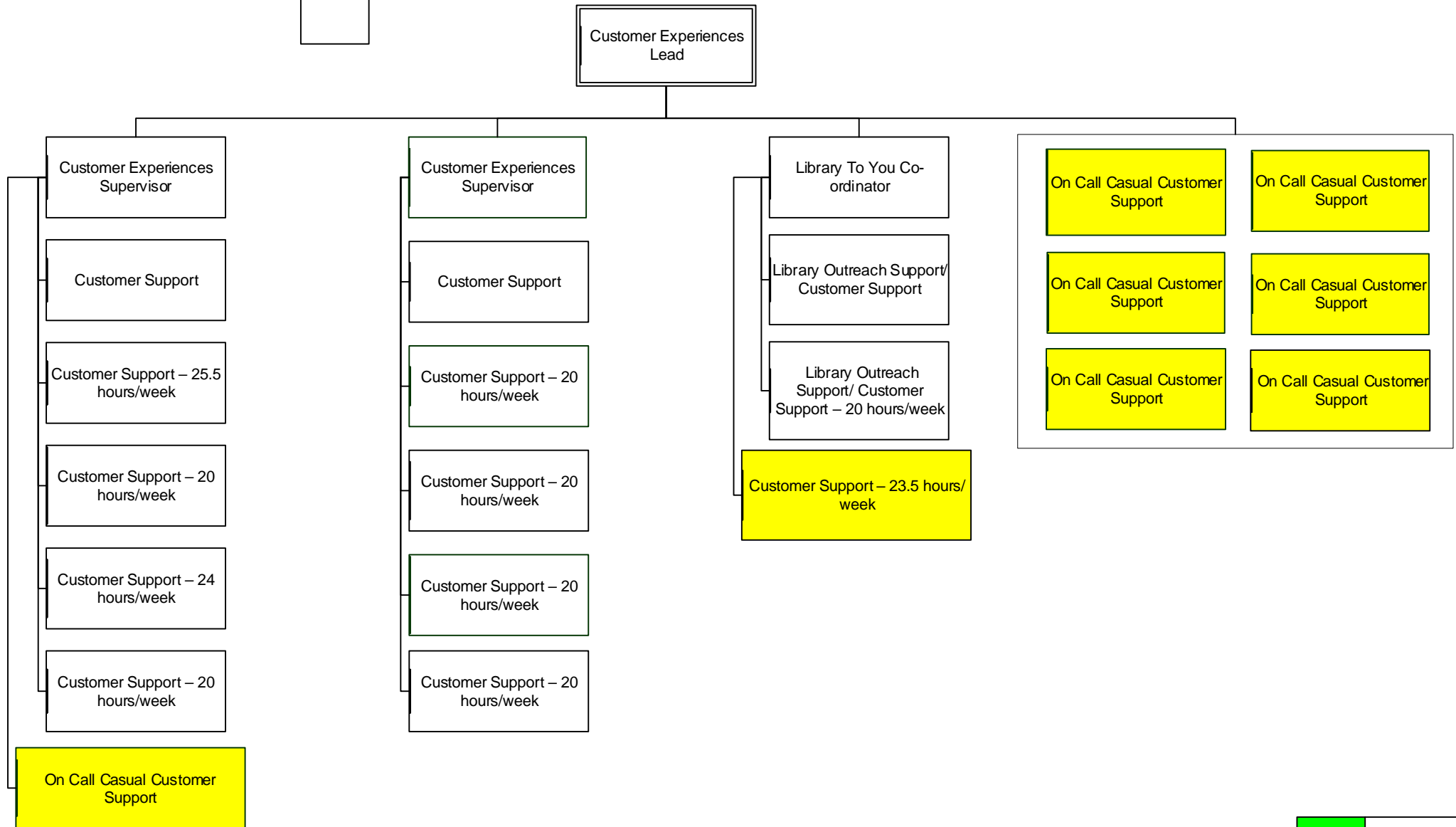
COMMUNITY WELLBEING – TE AKA MAURI

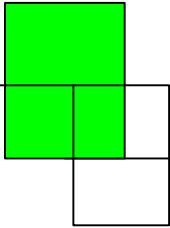


COMMUNITY WELLBEING – TE AKA MAURI - BUSINESS DEVELOPMENT & SUPPORT

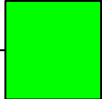
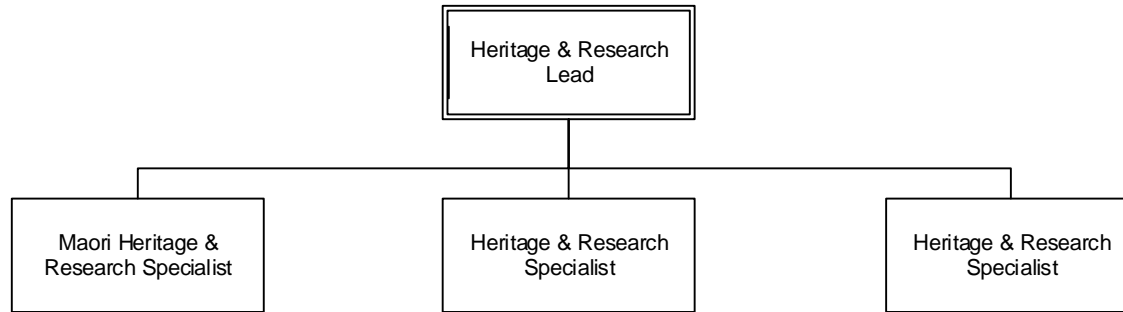


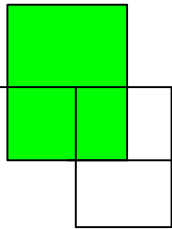
COMMUNITY WELLBEING – TE AKA MAURI - CUSTOMER EXPERIENCE



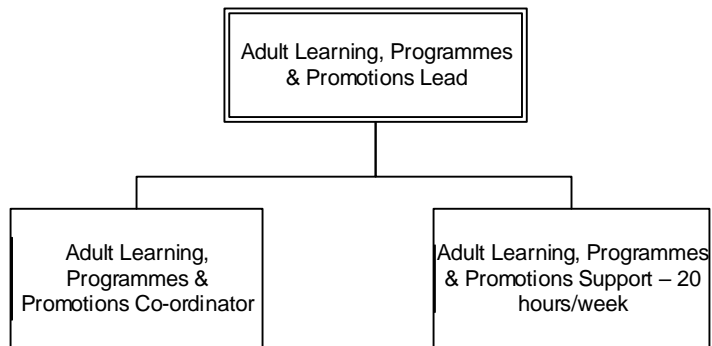


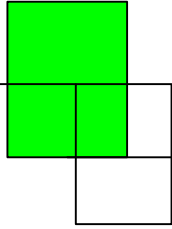
COMMUNITY WELLBEING – TE AKA MAURI – HERITAGE & RESEARCH



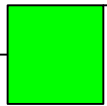
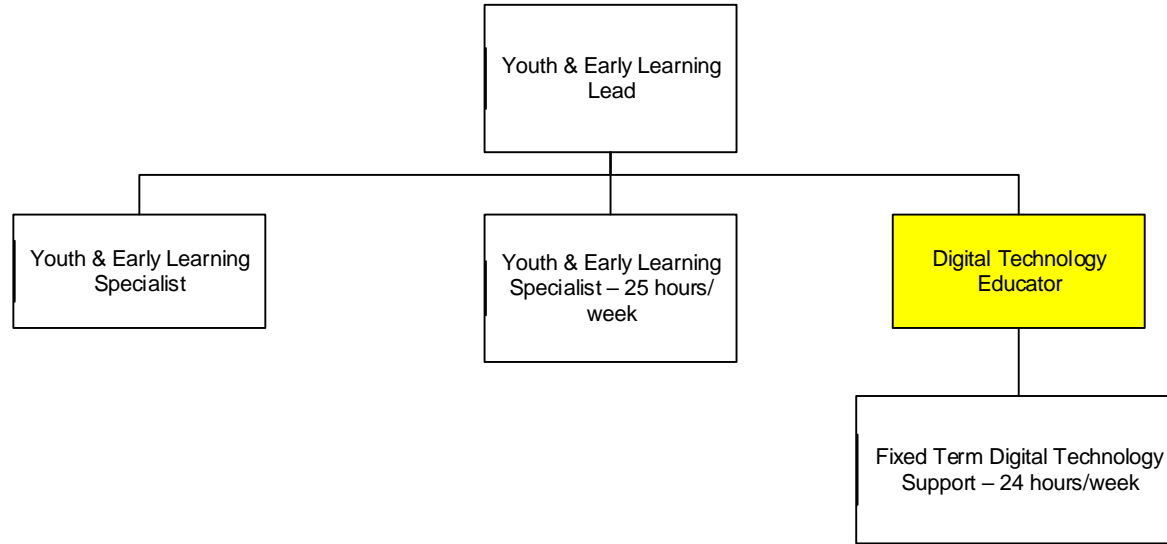


COMMUNITY WELLBEING – TE AKA MAURI – ADULT LEARNING, PROGRAMMES & PROMOTIONS

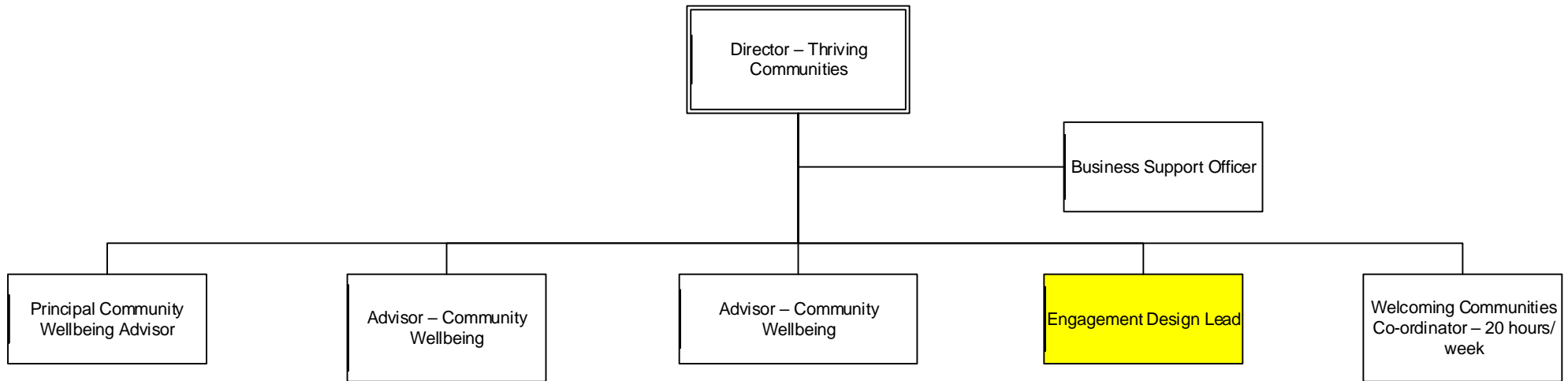


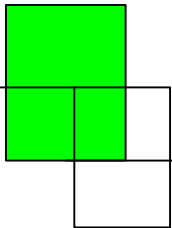


COMMUNITY WELLBEING – TE AKA MAURI – YOUTH & EARLY LEARNING

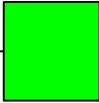
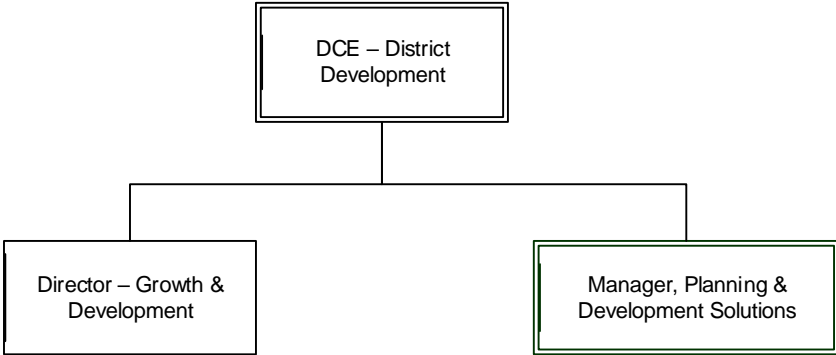


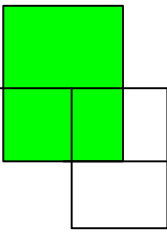
COMMUNITY WELLBEING – THRIVING COMMUNITIES



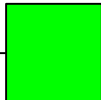
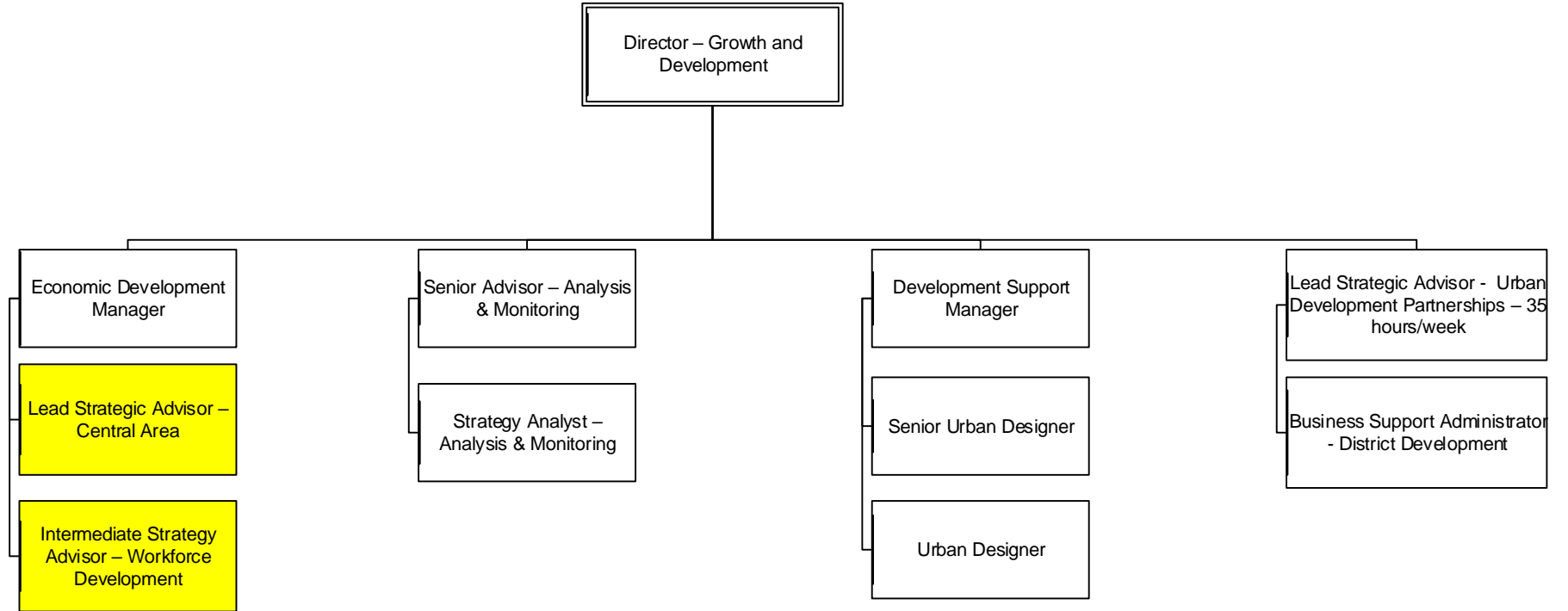


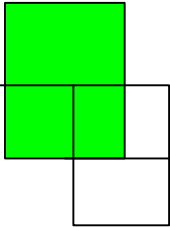
DISTRICT DEVELOPMENT



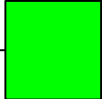
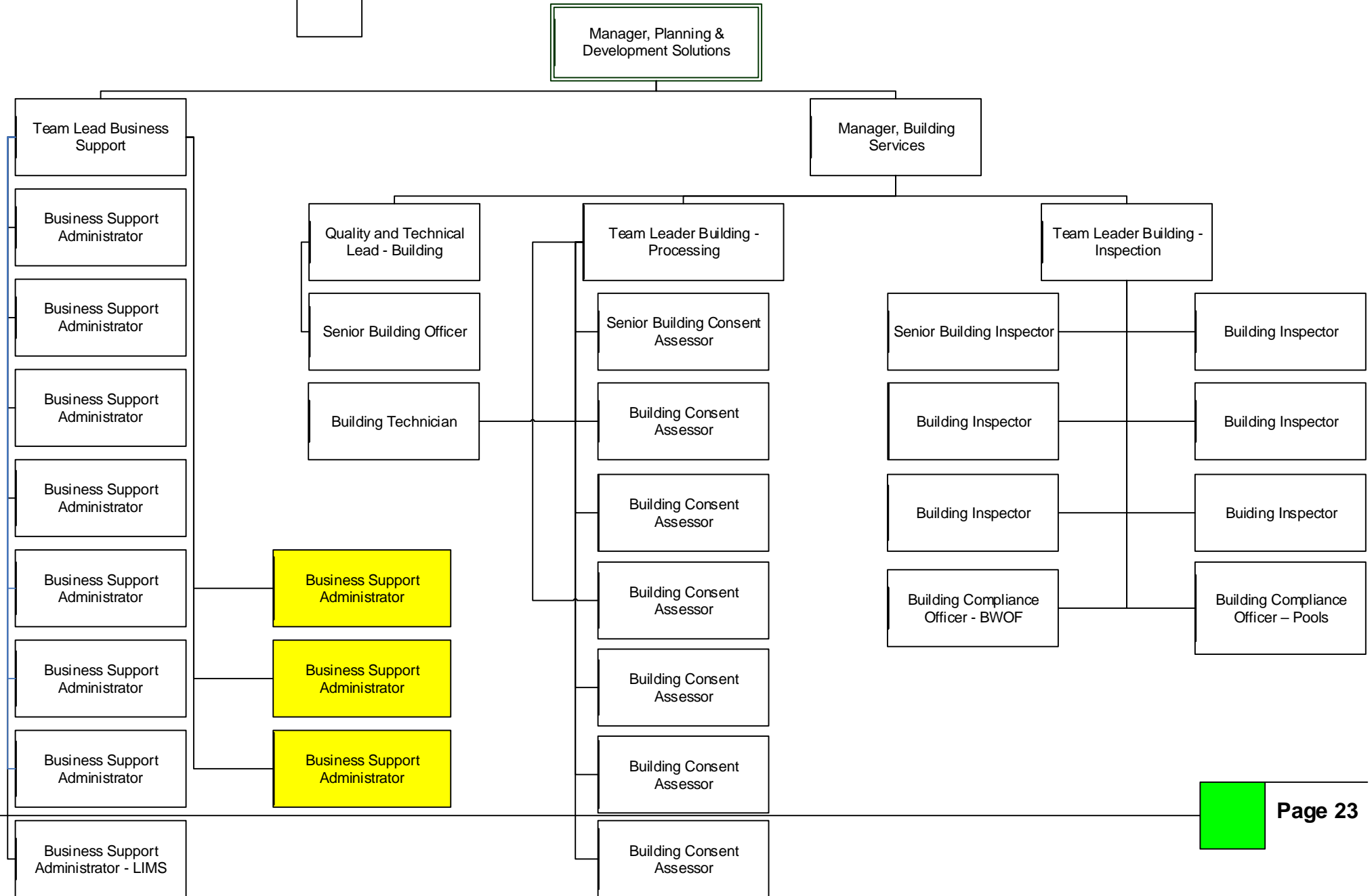


DISTRICT DEVELOPMENT – GROWTH & DEVELOPMENT

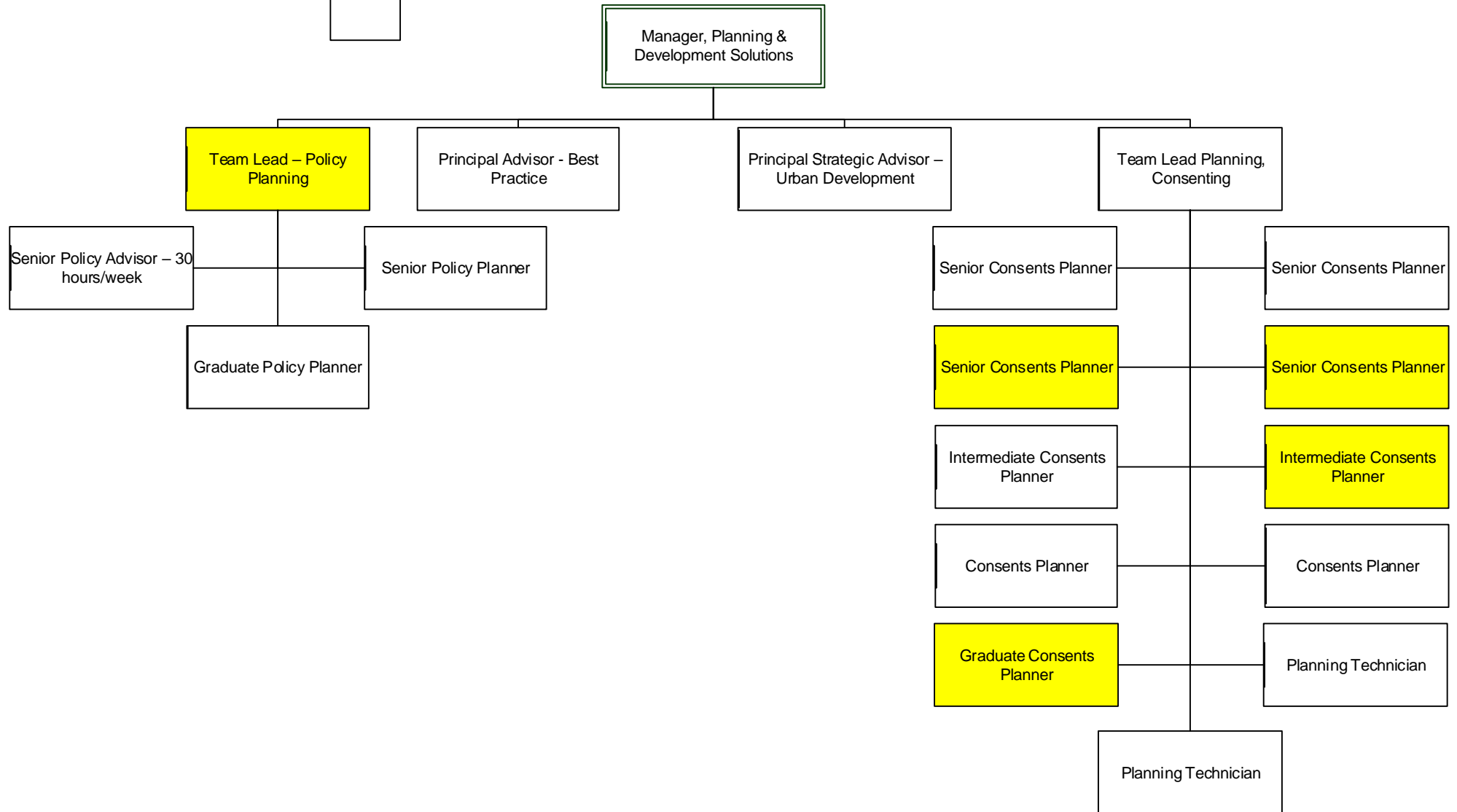




DISTRICT DEVELOPMENT – INTEGRATED PLANNING & DEVELOPMENT

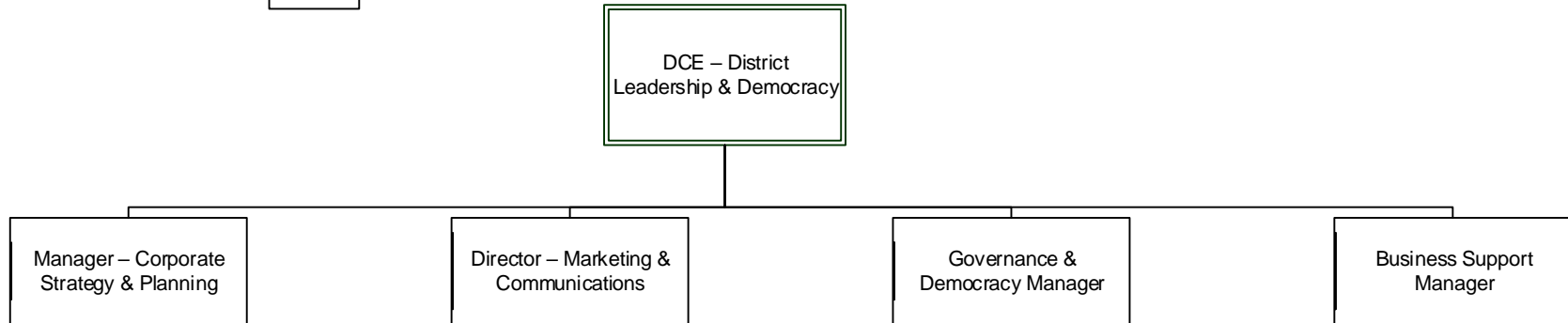


DISTRICT DEVELOPMENT – INTEGRATED PLANNING & DEVELOPMENT

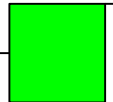
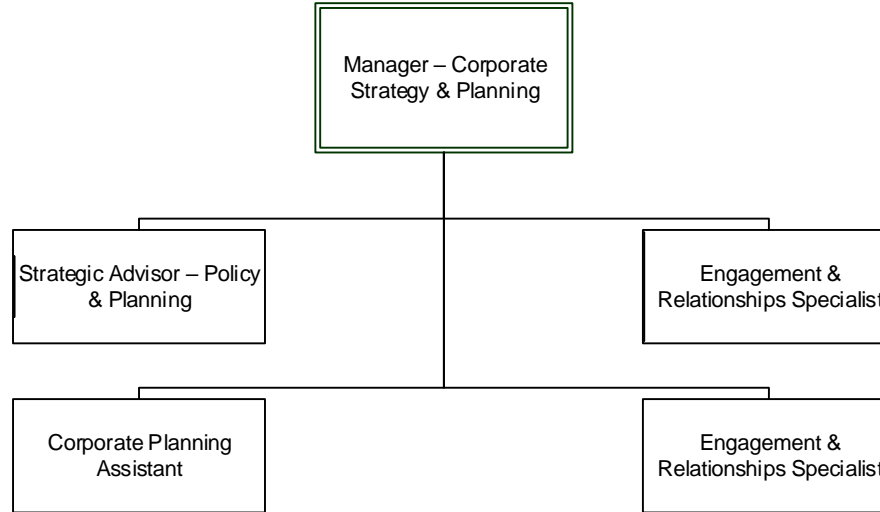
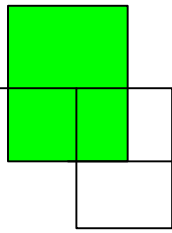


Monday, 6 March 2023

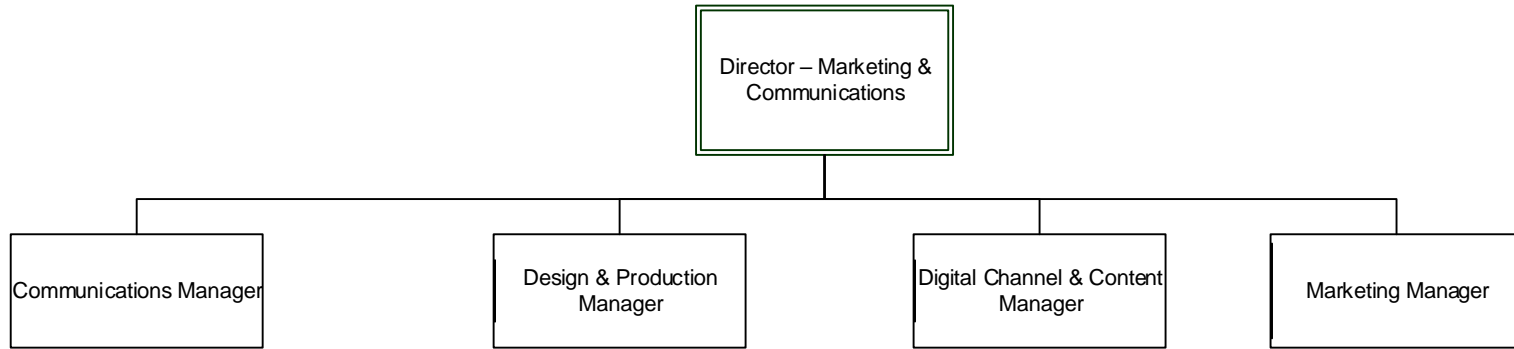
DISTRICT LEADERSHIP & DEMOCRACY

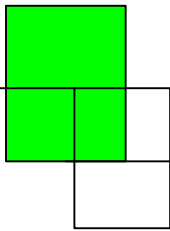


DISTRICT LEADERSHIP & DEMOCRACY – CORPORATE STRATEGY & PLANNING

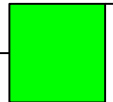
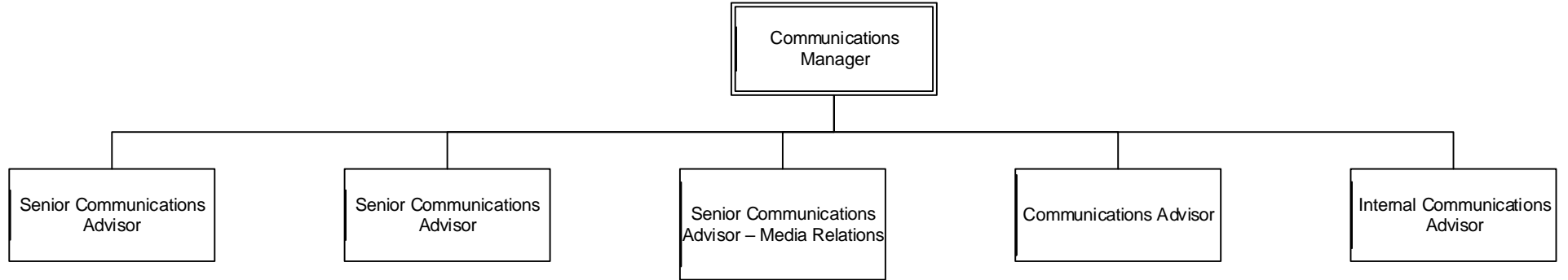


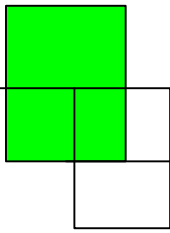
DISTRICT LEADERSHIP & DEMOCRACY – MARKETING & COMMUNICATIONS



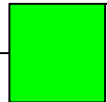
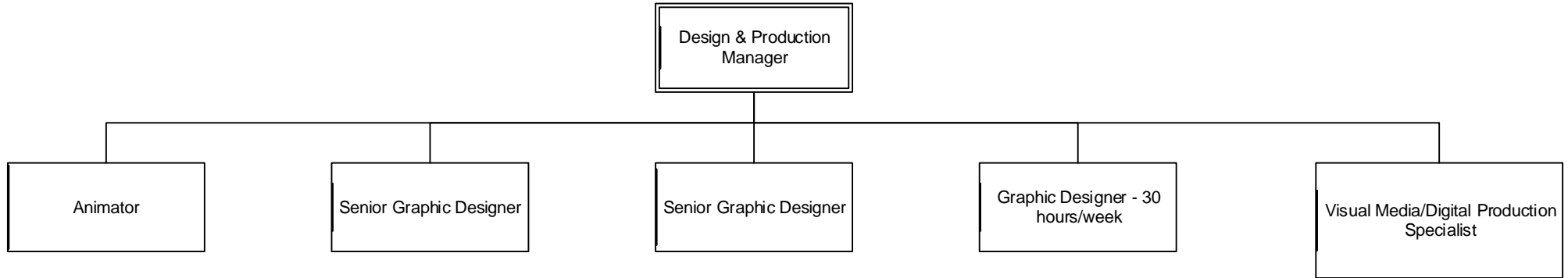


DISTRICT LEADERSHIP & DEMOCRACY – MARKETING & COMMUNICATIONS - COMMUNICATIONS

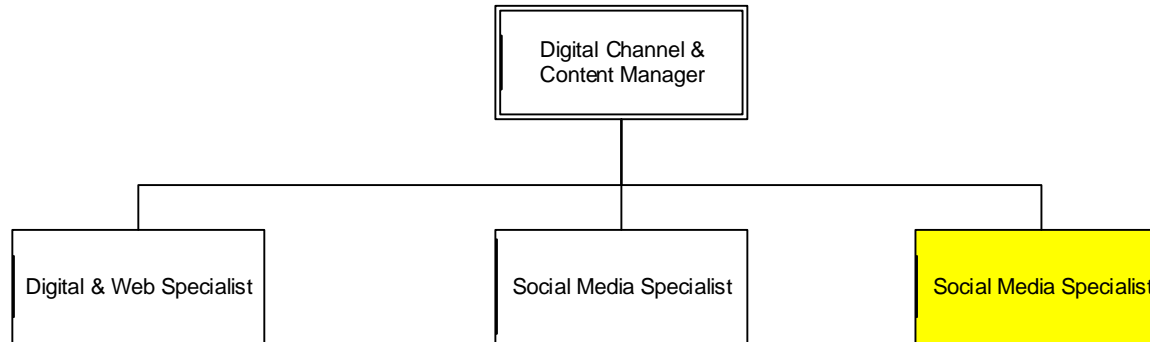




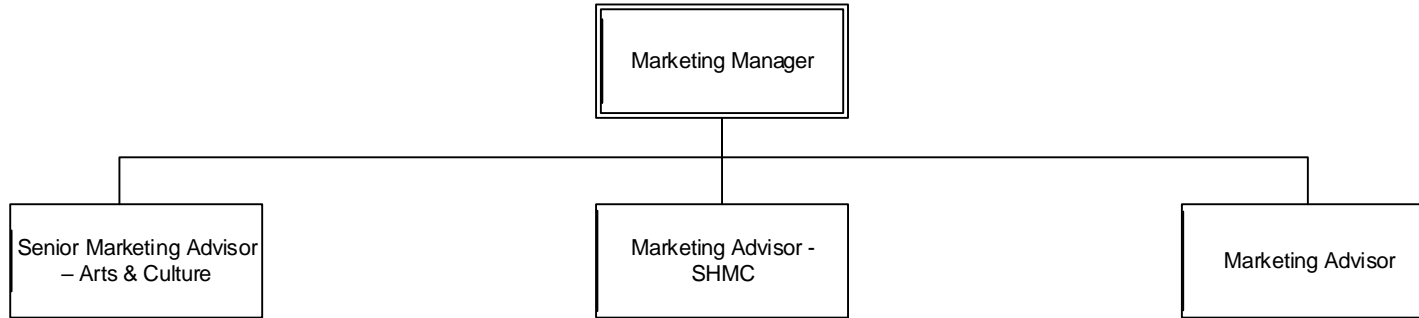
DISTRICT LEADERSHIP & DEMOCRACY – MARKETING & COMMUNICATIONS – DESIGN & PRODUCTION



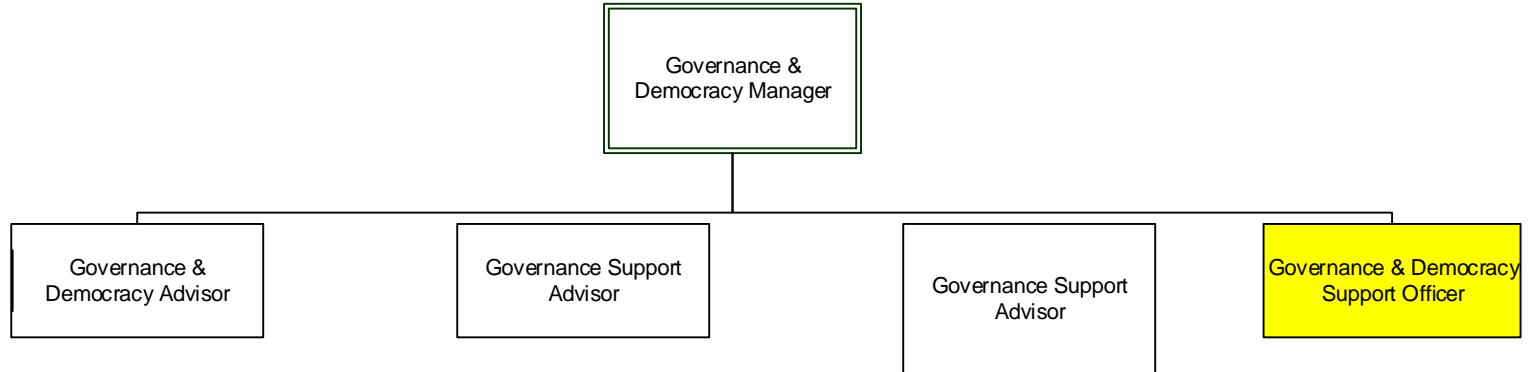
DISTRICT LEADERSHIP & DEMOCRACY – MARKETING & COMMUNICATIONS – DIGITAL CHANNEL & CONTENT



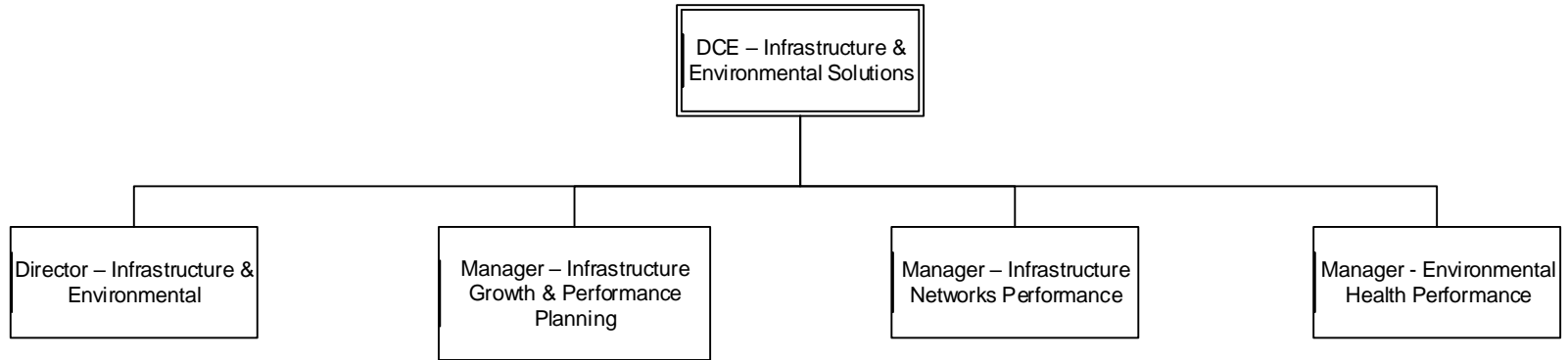
DISTRICT LEADERSHIP & DEMOCRACY – MARKETING & COMMUNICATIONS – MARKETING



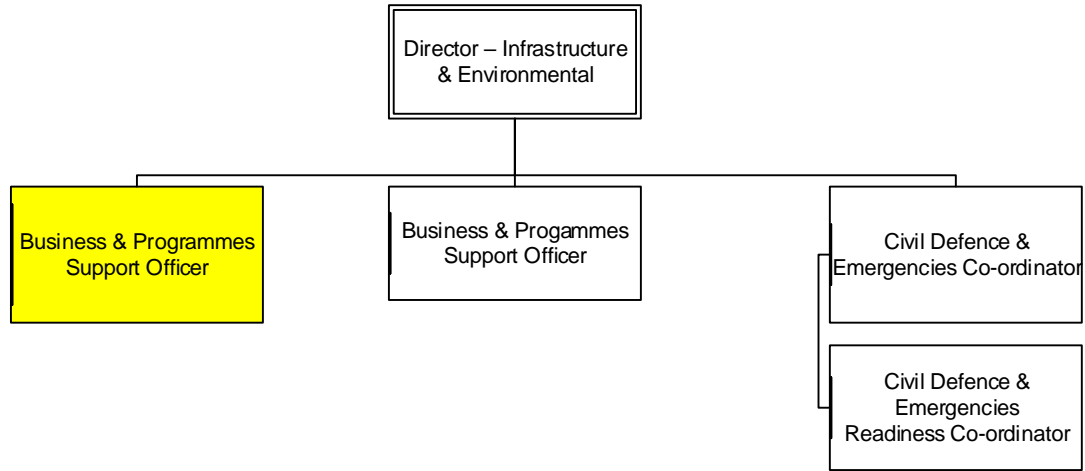
DISTRICT LEADERSHIP & DEMOCRACY – GOVERNANCE & DEMOCRACY



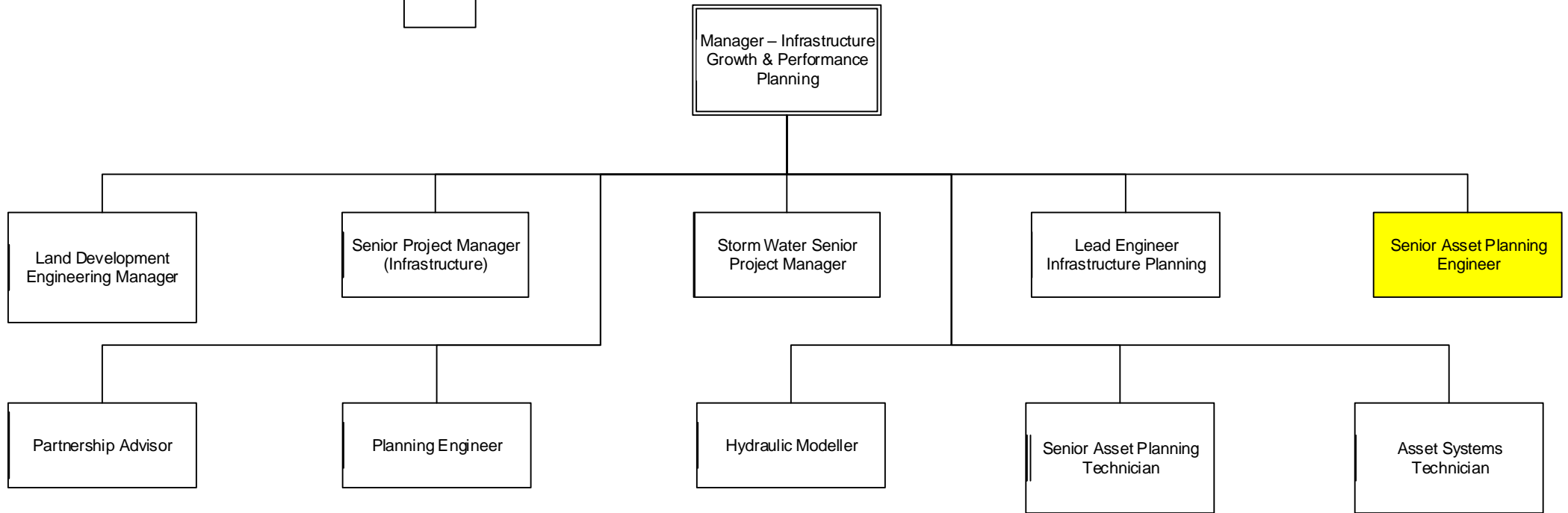
INFRASTRUCTURE & ENVIRONMENTAL SOLUTIONS



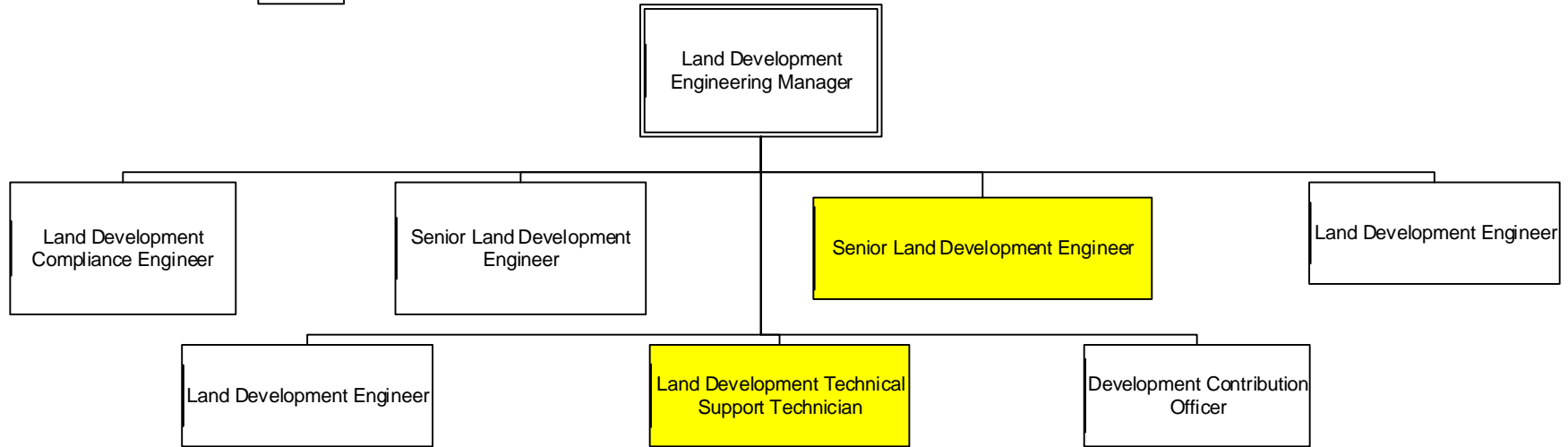
INFRASTRUCTURE & ENVIRONMENTAL SOLUTIONS – INFRASTRUCTURE & ENVIRONMENTAL

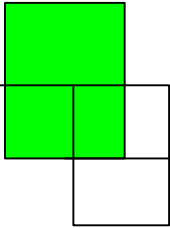


INFRASTRUCTURE & ENVIRONMENTAL SOLUTIONS – INFRASTRUCTURE GROWTH & PERFORMANCE PLANNING

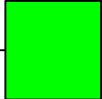
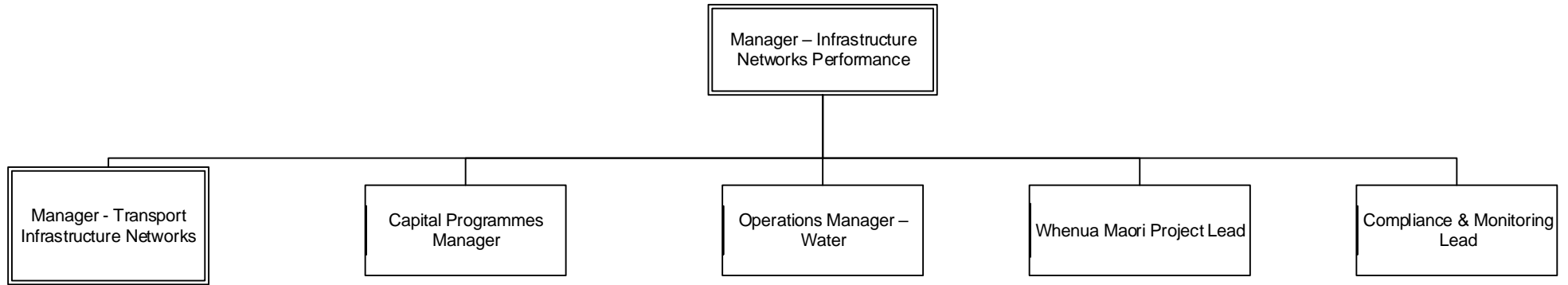


INFRASTRUCTURE & ENVIRONMENTAL SOLUTIONS – INFRASTRUCTURE GROWTH & PERFORMANCE PLANNING – LAND DEVELOPMENT ENGINEERING

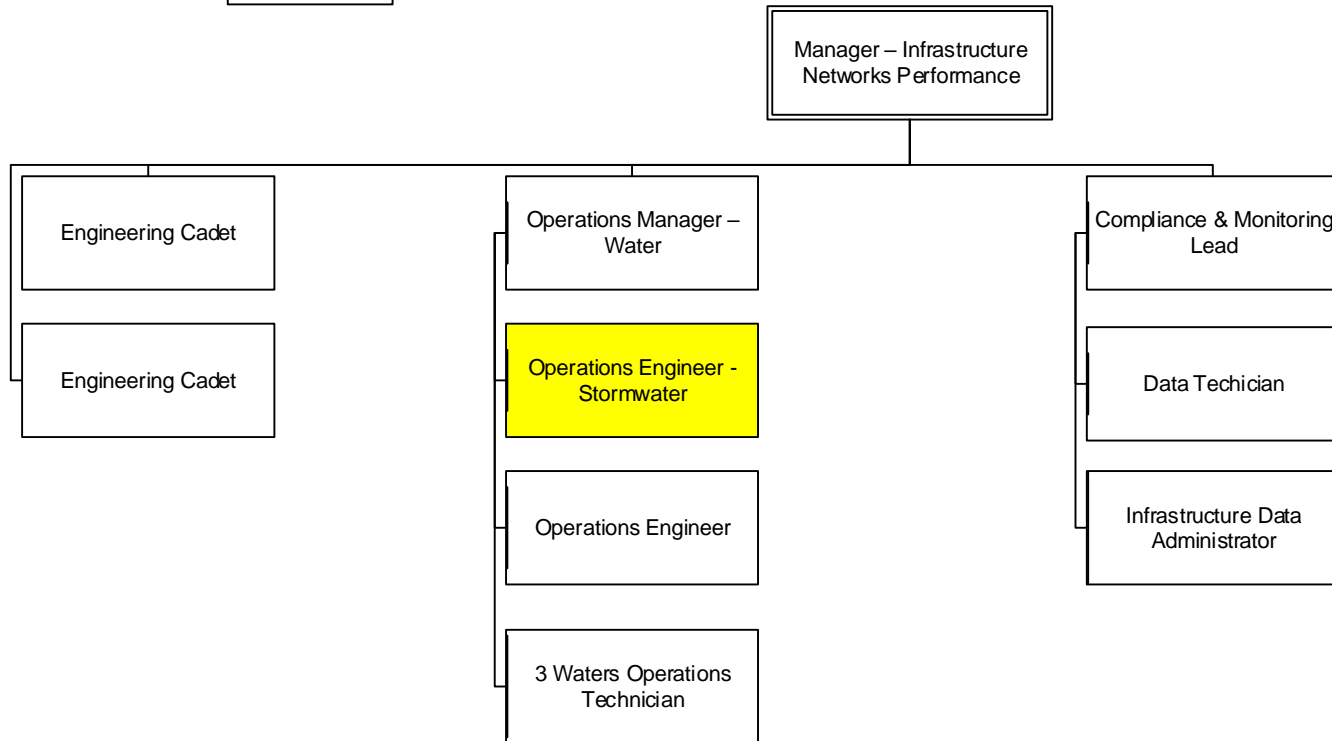




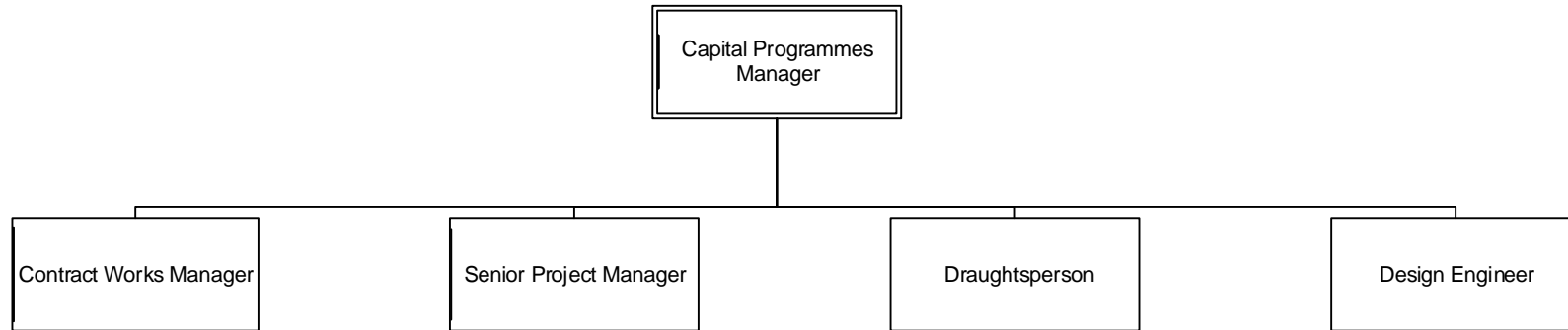
INFRASTRUCTURE & ENVIRONMENTAL SOLUTIONS – INFRASTRUCTURE NETWORKS PERFORMANCE



INFRASTRUCTURE & ENVIRONMENTAL SOLUTIONS – INFRASTRUCTURE NETWORKS PERFORMANCE – 3 WATERS SERVICES

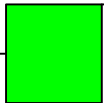
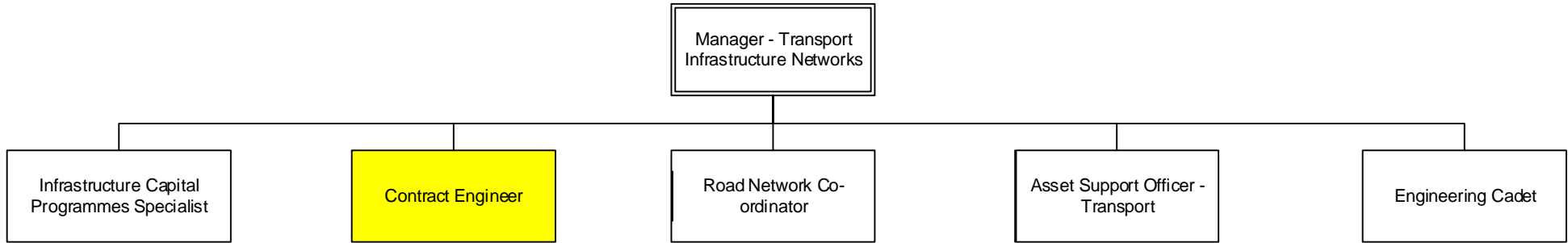
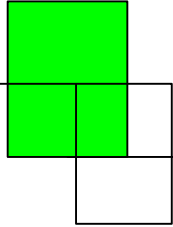


INFRASTRUCTURE & ENVIRONMENTAL SOLUTIONS – INFRASTRUCTURE NETWORKS PERFORMANCE - CAPITAL PROGRAMMES

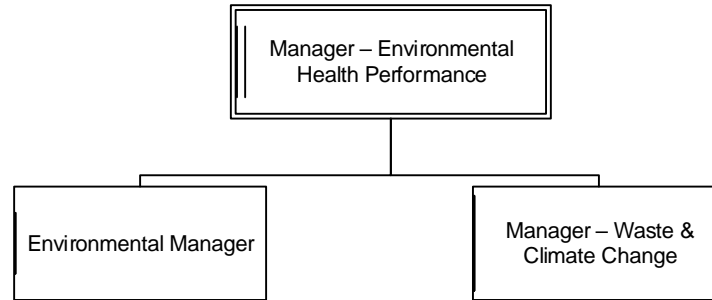


Monday, 6 March 2023

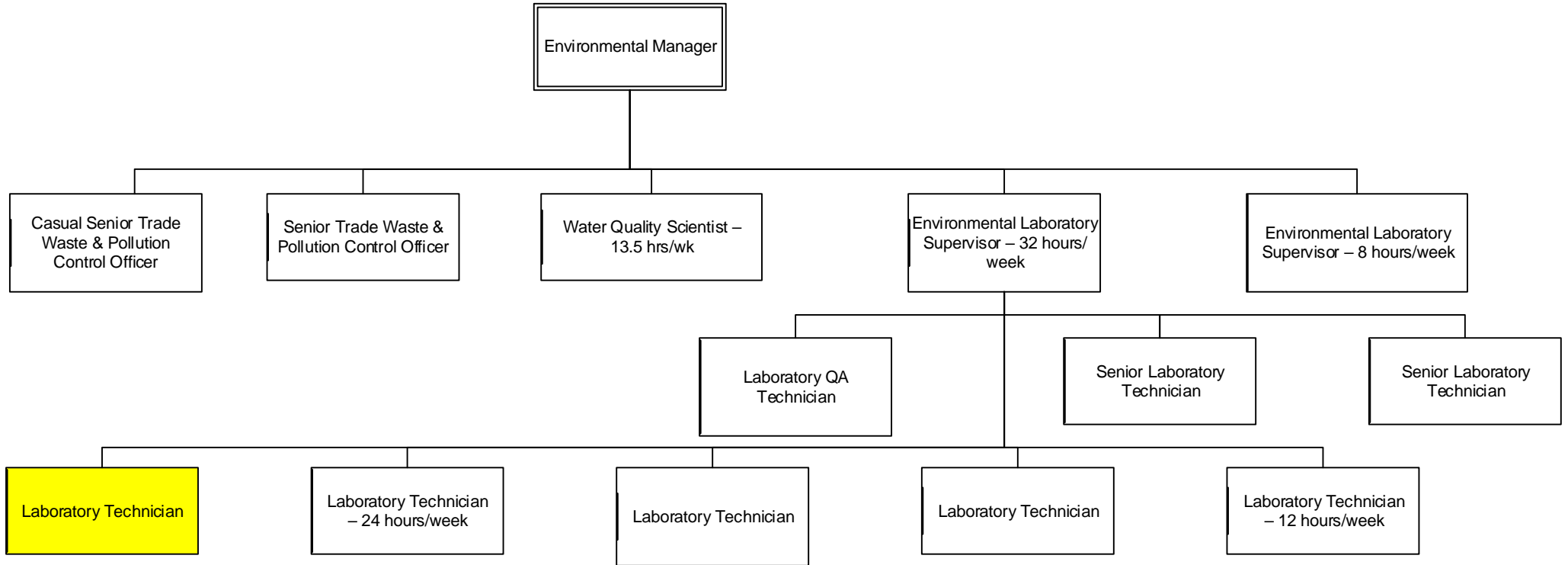
INFRASTRUCTURE & ENVIRONMENTAL SOLUTIONS – INFRASTRUCTURE NETWORKS PERFORMANCE– TRANSPORT INFRASTRUCTURE NETWORKS

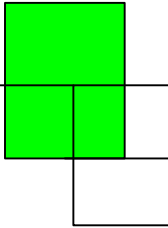


INFRASTRUCTURE & ENVIRONMENTAL SOLUTIONS – ENVIRONMENTAL HEALTH PERFORMANCE

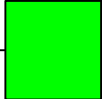
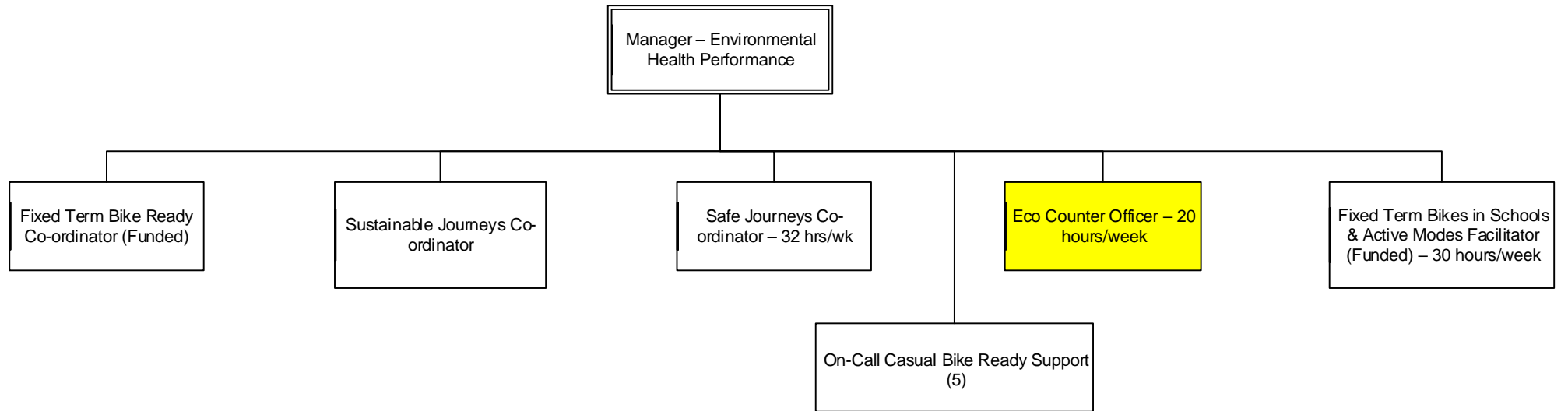


INFRASTRUCTURE & ENVIRONMENTAL SOLUTIONS – ENVIRONMENTAL HEALTH PERFORMANCE– LABORATORY SERVICES

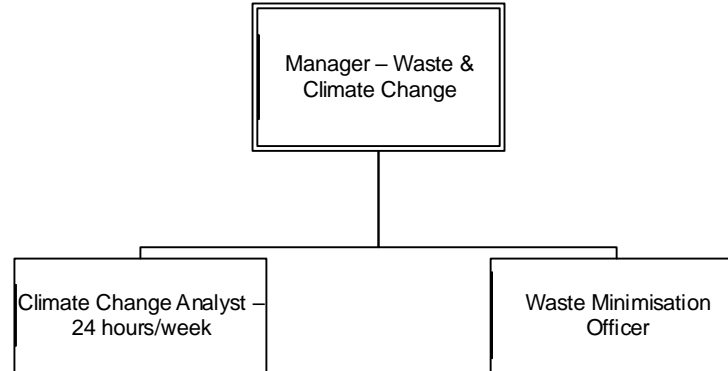


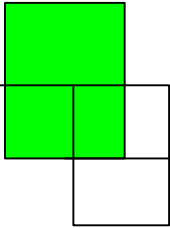


INFRASTRUCTURE & ENVIRONMENTAL SOLUTIONS – ENVIRONMENTAL HEALTH PERFORMANCE – SAFE & SUSTAINABLE JOURNEYS

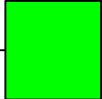
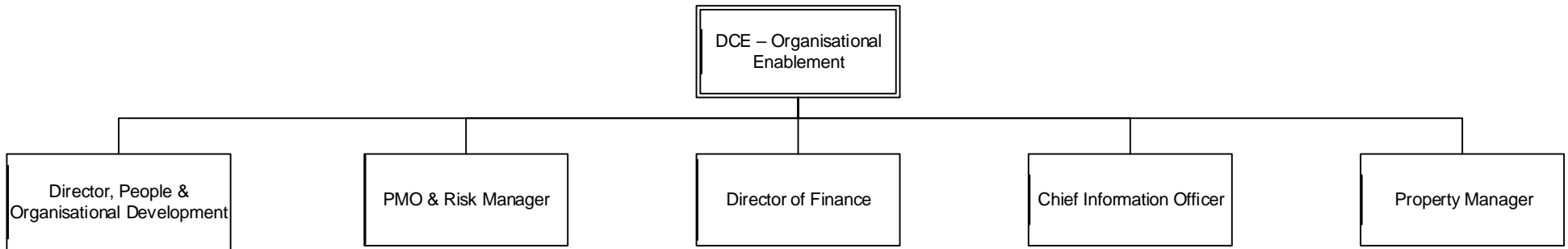


INFRASTRUCTURE & ENVIRONMENTAL SOLUTIONS – ENVIRONMENTAL HEALTH PERFORMANCE – WASTE & CLIMATE CHANGE

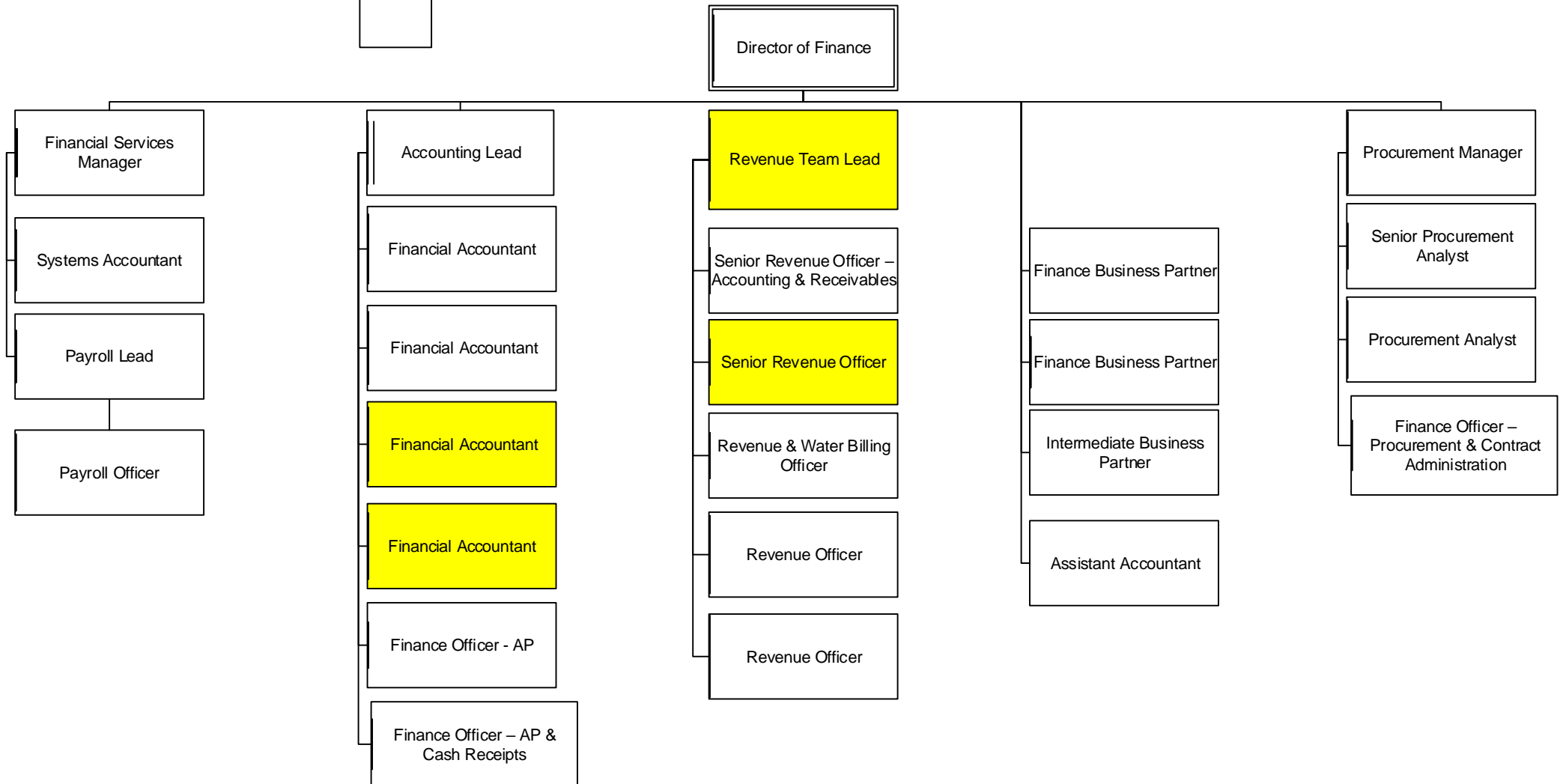




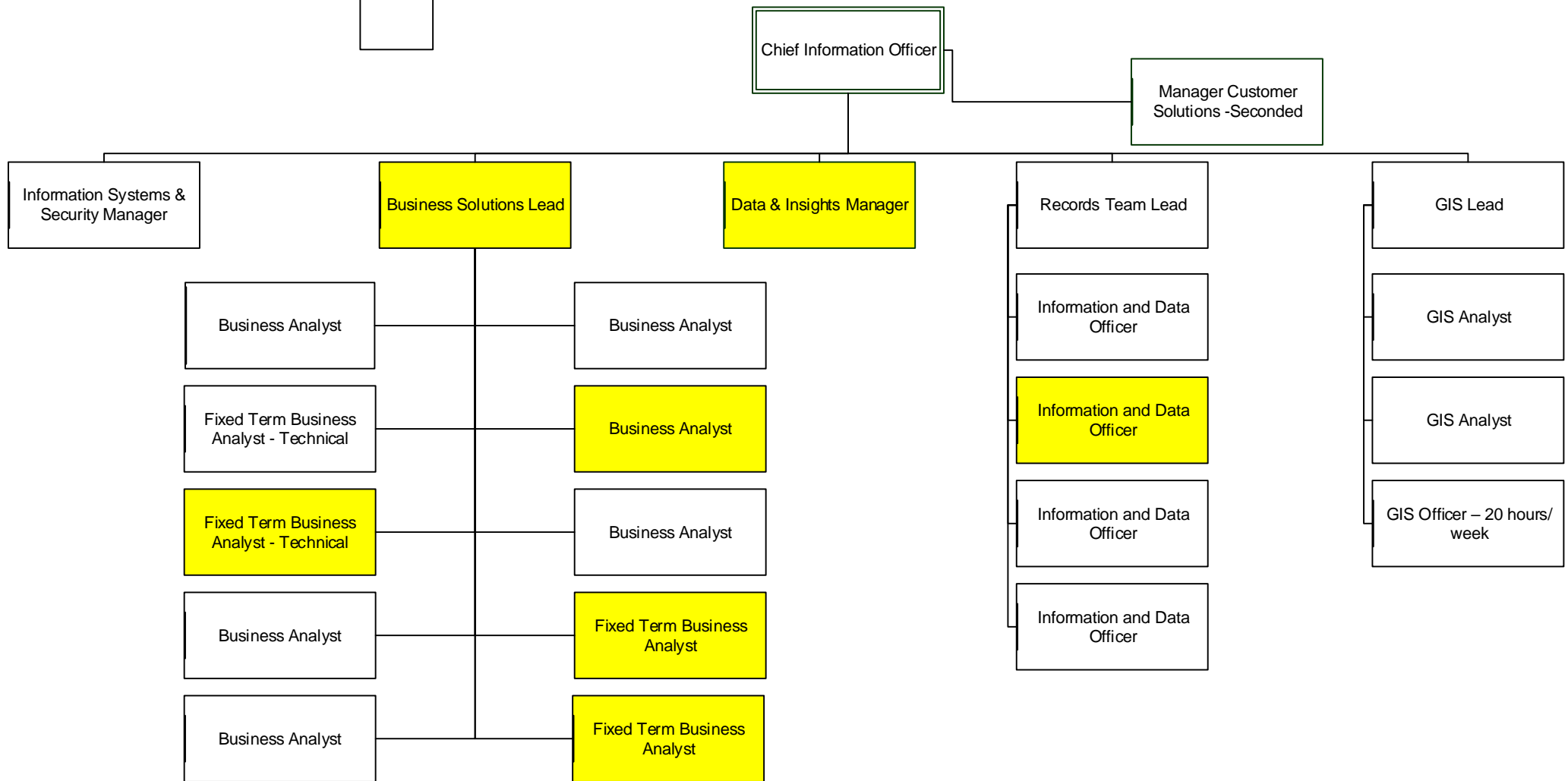
ORGANISATIONAL ENABLEMENT



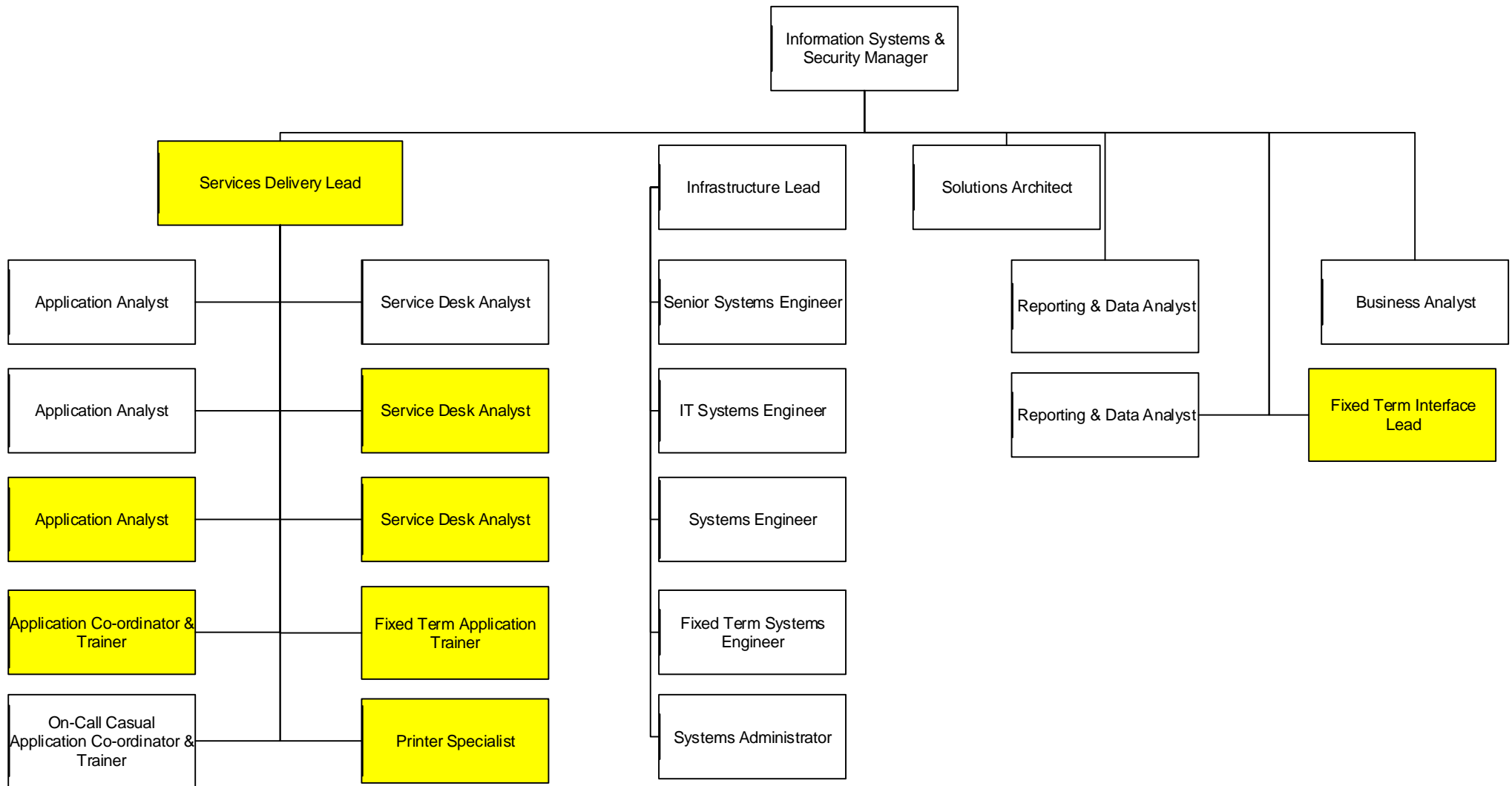
ORGANISATIONAL ENABLEMENT – FINANCE & BUSINESS PERFORMANCE



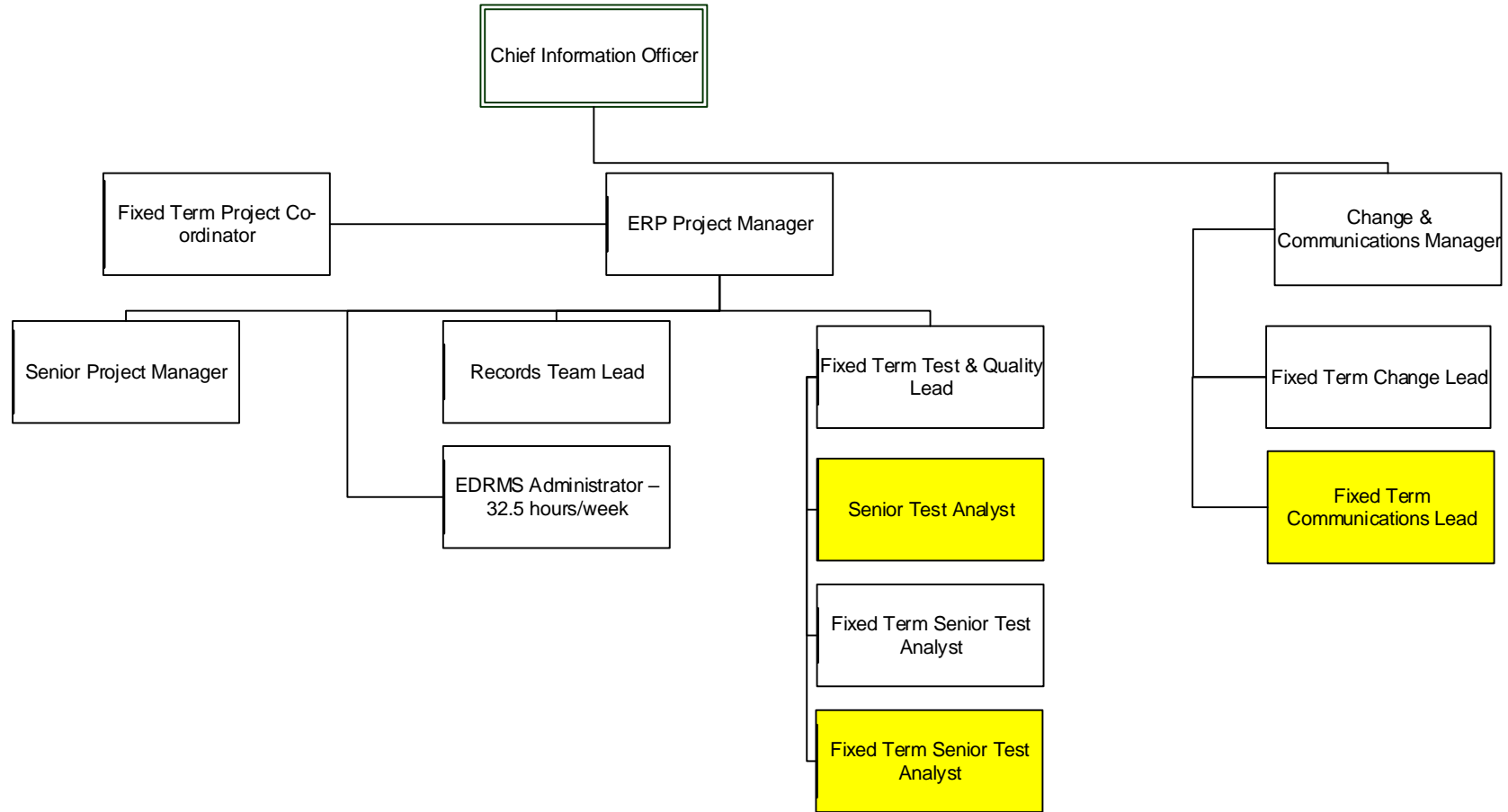
ORGANISATIONAL ENABLEMENT – INFORMATION SOLUTIONS

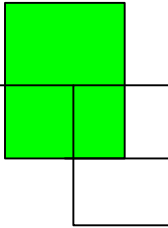


ORGANISATIONAL ENABLEMENT – INFORMATION SOLUTIONS



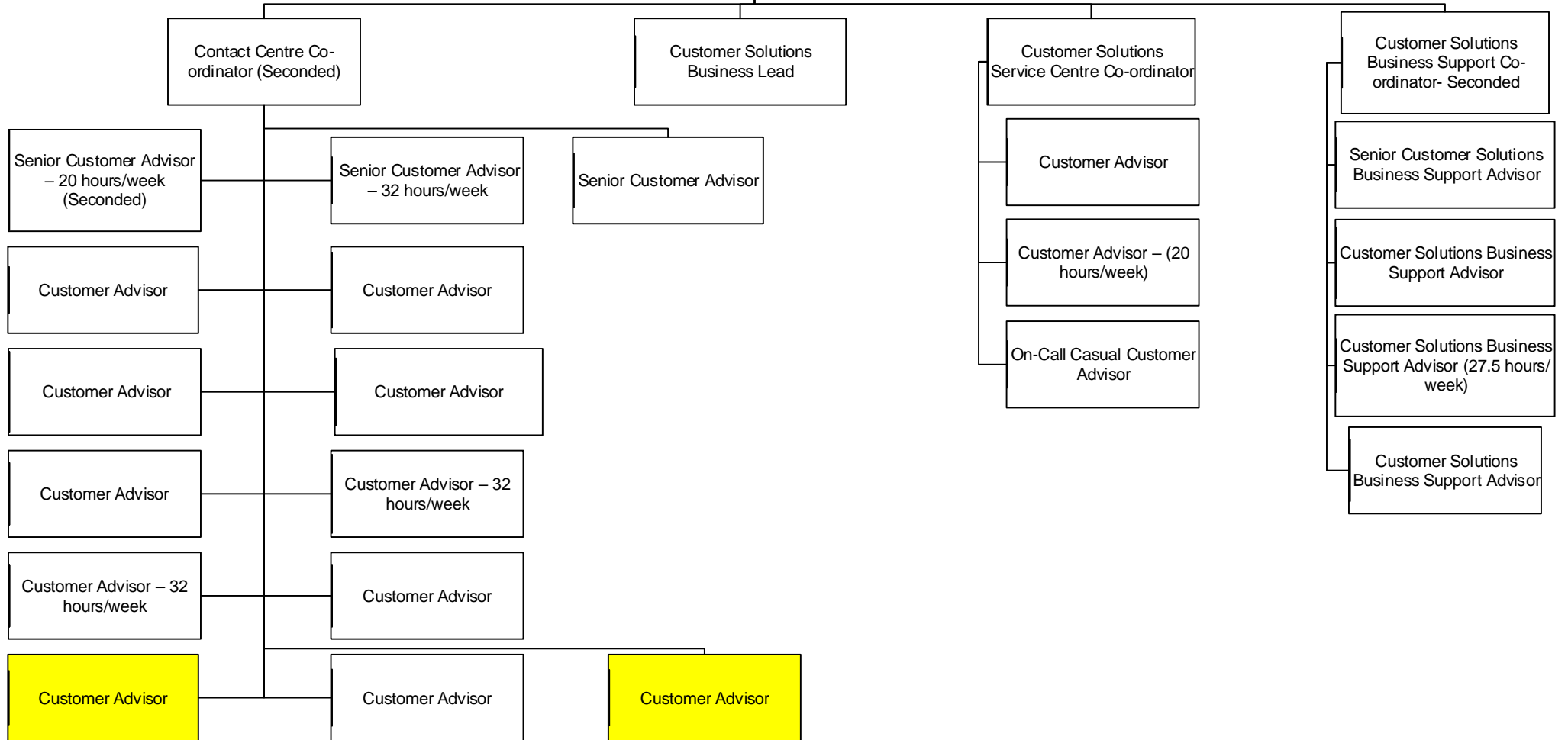
ORGANISATIONAL ENABLEMENT – INFORMATION SOLUTIONS



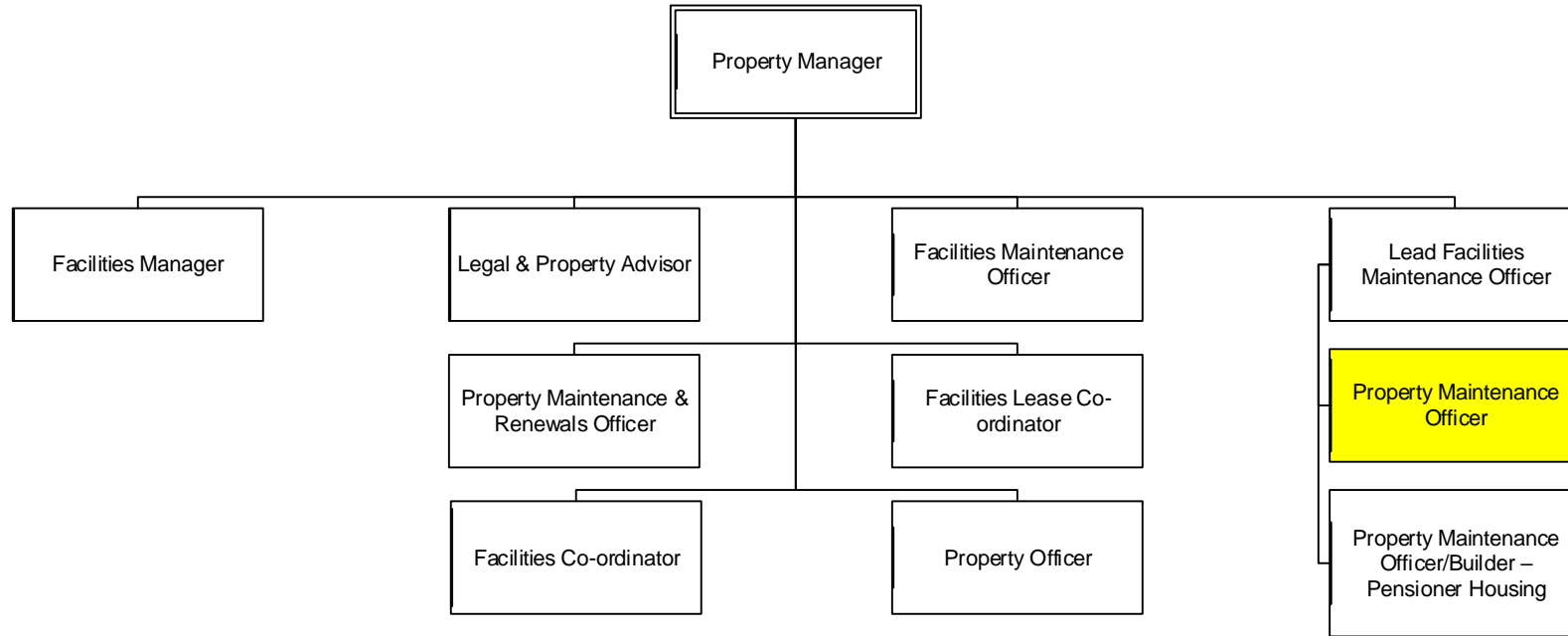


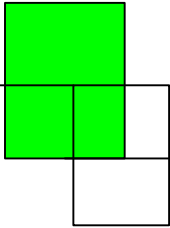
ORGANISATIONAL ENABLEMENT – INFORMATION SOLUTIONS - CUSTOMER SOLUTIONS

Manager Customer Solutions - Seconded

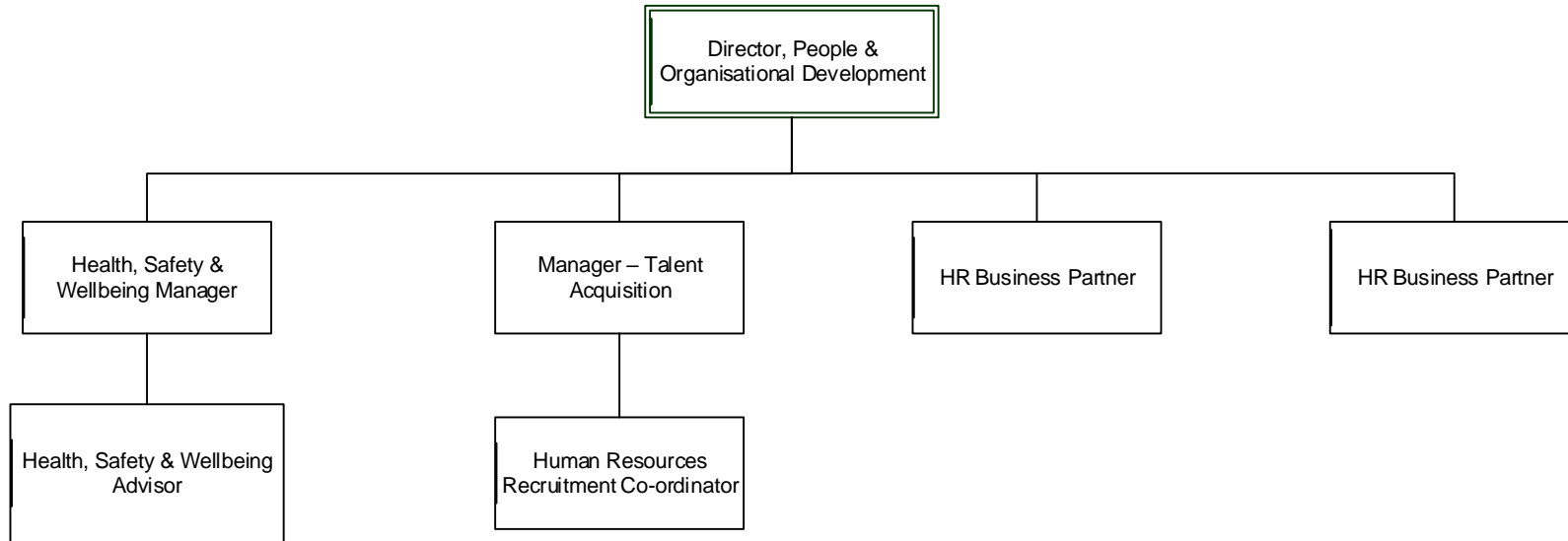


ORGANISATIONAL ENABLEMENT – LEGAL & PROPERTY





ORGANISATIONAL ENABLEMENT – PEOPLE & ORGANISATIONAL DEVELOPMENT



ORGANISATIONAL ENABLEMENT - PMO & RISK OFFICE

