



**ROTORUA  
LAKES COUNCIL**  
Te Kaunihera o ngā Roto o Rotorua

# Kaupapataka Agenda

**PROTOCOL MEETING BETWEEN  
TŪHOURANGI AND ROTORUA LAKES COUNCIL**

*Huinga Tūhono kai waenga i a  
Tūhourangi me te Kaunihera o ngā Roto o Rotorua*

---

**Date: 13 October 2023**

**Time: 10 am**

**Venue: Committee Room 2**

---

## **MEMBERSHIP**

**Chair:** Mayor Tania Tapsell

**Rotorua Lakes Council:** Cr Lani Kereopa  
Cr Trevor Maxwell  
Cr Rawiri Waru

**Tūhourangi Tribal Authority:** Kirikowhai Mikaere  
Deliah Balle  
Watu Mihinui  
Warena Morgan  
Rangitihi Pene  
Ngarepo Eparaima

[Back to Index](#)

## TŪHOURANGI PROTOCOL

<b>Type of Committee</b>	Māori Protocol Committee
<b>Tūhourangi Protocol</b>	On 5 April 2005 the Rotorua District Council and Tūhourangi signed a protocol. The protocol seeks to form a basis of understanding on the principles and process of communication and collaboration for the benefit of the peoples of Tūhourangi and of the District of Rotorua in general.
<b>Principles of the Protocol</b>	<ul style="list-style-type: none"> <li>• Tūhourangi and Rotorua District Council acknowledge the autonomy of both organisations; their right to develop and promote strategies and policies that reflect the views of those they represent. Effective communications and the practise of meaningful consultation will ensure a growing commonality of purpose will occur between Tūhourangi and Rotorua District Council.</li> <li>• The parties agree that it is in their joint interests, and that of those they represent, to work together to develop a shared view of the future of Lake Tarawera, its surroundings, and other areas of Tūhourangi interest.</li> <li>• With the intention of creating an atmosphere of “no surprises”, the signatories agree they will communicate openly and honestly to give effect to matters to the benefit of both parties in an atmosphere of mutual respect.</li> <li>• The parties to this protocol will determine their respective membership of a management committee to give effect to this protocol.</li> <li>• The signatories agree that principles of manaakitanga, kaitiakitanga and rangatiratanga will underpin their relationship.</li> </ul>
<b>Reference</b>	20-07-015
<b>Membership</b>	Tūhourangi Representatives: & Council representatives:
<b>Meeting frequency</b>	Bi-Annually
<b>Application</b>	<ul style="list-style-type: none"> <li>• Tūhourangi and Rotorua District Council will seek opportunities to share perspectives and jointly develop process to further a consistent vision for Lake Tarawera, its surroundings and other areas of Tūhourangi interest.</li> <li>• Tūhourangi and Rotorua District Council will meet regularly to foster an early and informed understanding of issues and assist a co-ordinated strategic response.</li> <li>• Tūhourangi and Rotorua District Council will identify and regularly update appropriate channels of communications between hapu and Council.</li> <li>• Tūhourangi and Rotorua District Council will develop policy and make ongoing management decisions within their respective areas of responsibility with an understanding of this protocol vision, priorities and expectations of both organisations</li> </ul>

[Back to Index](#)

# Order of Business

---

<b>1</b>	<b>Karakia whakapuaki - Opening karakia .....</b>	<b>4</b>
<b>2</b>	<b>Ngā whakapaaha - Apologies .....</b>	<b>4</b>
<b>3</b>	<b>Te whakaū i ngā meneti - Confirmation of Minutes.....</b>	<b>5</b>
3.1	Tūhourangi Protocol Committee Meeting Minutes (draft) 25 May 2023 .....	5
<b>4</b>	<b>Ngā take kua puea ake I ngā meneti - Actions arising from previous minutes .....</b>	<b>42</b>
4.1	Actions from Tūhourangi Meeting held 25 May 2023 .....	42
<b>5</b>	<b>Ngā pūrongo ā-waha – Verbal Reports .....</b>	<b>45</b>
5.1	Marae Emergency Management Planning – Aneta Morgan .....	45
5.2	Update on Trade Waste Applications to Marae – Alison Lowe.....	45
5.3	Update on Tarawera wastewater scheme, Waipa/Hemo water take and CNI wastewater irrigation - Kahurangi White-Parsons .....	45
5.4	Operational Report - Rob Pitkethley .....	45
5.5	3 Waters Asset Summary .....	45
<b>6</b>	<b>Te Karakia Whakamutunga - Closing Karakia.....</b>	<b>46</b>

## **1 Karakia whakapuaki - Opening karakia**

## **2 Ngā whakapaaha - Apologies**

The Chairperson invites notice from members of apologies, including apologies for lateness and early departure from the meeting.

### 3 Te whakaū i ngā meneti - Confirmation of Minutes

---

#### 3.1 Tūhourangi Protocol Committee Meeting Minutes (draft) 25 May 2023

12613451

#### MINUTES (DRAFT)

#### Tūhourangi Protocol Committee Meeting held Thursday, 25 May 2023 at 1.00 pm Council Chamber, Rotorua Lakes Council

CHAIR:	Mayor Tania Tapsell
MEMBERS PRESENT:	Ngarepo Eparaima, Kirikowhai Mikaere, Warena Morgan, Cr Trevor Maxwell,
APOLOGIES:	Deliah Balle, Watu Mihinui, Cr Lani Kereopa, Cr Rawiri Waru
IN ATTENDANCE:	Hemi Waerea, Tūhourangi Tribal Authority
STAFF PRESENT:	Gina Rangi, Aneta Morgan, Rob Pitkethley, Simon Alefosio-Tuck, Clark Pirika, Kahurangi White-Parsons, Kelly-Anne Panapa, Bruce Horne, Stephen Rowlands, Mihi Morgan, Gomathi Konara.

The meeting opened at 1.11 pm.  
The Chair welcomed committee members and staff.

#### 1. KARAKIA WHAKAPUAKI – OPENING KARAKIA

Clark Pirika opened the meeting with a Karakia.

#### 2. NGĀ WHAKAPĀHA - APOLOGIES

##### Resolved

1. That the apologies from Cr Kereopa, Cr Waru, Geoff Williams, Deliah Balle, Rangitihī Pene and Watu Mihinui be accepted.

Moved : Cr Maxwell  
Seconded : Warena Morgan  
**CARRIED**

#### 3. TE WHAKAŪ I NGĀ MENETI – CONFIRMATION OF MINTUES

##### Resolved

1. That the minutes of the Tūhourangi Protocol meeting held on 9 May 2022 be confirmed as a true and accurate record.

[Back to Index](#)

Moved : Kirikowhai Mikaere  
Seconded : Warena Morgan  
**CARRIED**

#### **4. NGĀ TAKE KUA PUEA AKE I NGĀ MENETI – ACTIONS ARISING FROM PREVIOUS MINUTES**

##### **4.1 Actions from Tūhourangi Meeting held 9 May 2022**

The following items to be addressed within agenda:

- **Tarawera Landing café ownership and management options.**

#### **5 NGĀ PŪRONGO Ā-WAHA - REPORTS**

##### **5.1 Tahua Report – Tūhourangi Tribal Authority (TTA)**

Kirikowhai Mikaere updated the committee as below:-

- The engagement between RLC and TTA should be more partnership as opposed to consultation. The partnership is slowly moving in that direction.
- TTA 's strategy has four key pillars;- Tahua (economic), Tuakiri (identity), Taiao (environment) and Tāngata (Social outcomes)
- Tahua –
  - Acknowledged Gina Rangi for her support in developing an economic briefing report.
  - TTA commissioned a detailed economic briefing.
  - TTA currently has assets and income and also future assets through CNI.
  - Have aspirations to support people return to Tarawera (after the eruption) and have a bigger foot print at Tarawera.
  - The briefing will then be turned in to a long term Tahua plan around what we have now and what we will own in 2042.
  - Some key areas are around forestry and tourism.
  - Starting to investigate around areas of energy, geothermal, technology and digital development.
  - A key focus is also to translate the education outcomes to employment outcomes.
  - Resilience is also a key theme.

##### **5.2 Tahua – Greatest Walk update**

Ngarepo Eparaima and Kirikowhai Mikaere updated the committee and spoke to a presentation (Attachment 1) as below:-

- The other hapū involved in this are Ngāti Rangitihi and Ngāti Tarāwhai.
- We want this to be iwi owned and iwi guided.
- Restricted numbers to increase experience.
- Walk starts from Waimangu and ends at Ōkataina.
- Secured some funding from Te Puni Kokiri to develop tracks.
- Have developed a detailed business plan.

[Back to Index](#)

- Have had discussions with Department of Conservation (DoC) regarding “Great Walk” branding as there are some condition conflicts.
- All the areas of the land of the walk is Māori land trust owned/iwi owned.

### 5.3 Tahua - Te Pūtake o Tawa update

Ngarepo Eparaima updated the committee and spoke to a presentation (Attachment 2) which shows the work completed.

TTA expects to launch the Whakarewarewa Forest Loop app on the 10<sup>th</sup> June, which is the Tarawera eruption anniversary.

### 5.4 Tahua – Future Development Strategy (FDS)

Damon Mathfield updated the board and spoke to a presentation (Attachment 3). Mr Mathfield highlighted below points:-

- What is the Future Development Strategy
- Projections on expected demand on housing and jobs
- Strategy and intensification plans for residential and business
- Had a robust engagement process.

Kirikowhai Mikaere stated that they would welcome more in-depth engagement with mana whenua.

### 5.5 Tuakiri – Return of Waitōharuru/Tarawera Landing

Rob Pitkethley updated the board as below:-

- Met with DoC and discussed some mechanisms of land transfer.
- Proposed mechanism was to change of classification of the reserve from a recreation reserve to a historic reserve. Then open up the avenues to set up a reserves committee to have a higher dual management role. Then potentially changed to a Tūhourangi management role and then could go to a vesting through to Tūhourangi.
- There's a process that has been identified as probably more achievable than going from a direct recreation reserve change.
- A key thing to deal within the process is the current lease on the landing café.
- There are strict guidelines regarding the lease in the Reserve Management Plan. Lease goes through to end of December 2023.
- Tūhourangi has advised that they are not committing to any further extensions of the lease at this stage. Current tenant has been advised of this situation.
- Tūhourangi and council needs to have discussion regarding a collective view.

Kirikowhai Mikaere updated the committee as below:-

- Tūhourangi is in discussion with the tenant regarding the options.
- Tūhourangi has also done due diligence around the type of investment.
- Tūhourangi have requested the council to formally write to DoC to start the process and disappointed this has not been initiated yet.
- Tūhourangi is looking at the area as a collective including Punaromia and not at the café in isolation.

**Action Point**

Council to discuss with DoC prior to end of June and get a formal letter to them on the intended process for returning the land to Tūhourangi.

Mr Pitkethley noted that the Reserve Management Plan has to be amended for any commercial activity to carry on at that site. If the café to operate beyond the current lease expiry date, the process would be to first amend the Reserve Management Plan and then to have a new lease agreement.

**5.6 Tuakiri – Punaromia**

Ngarepo Eparaima updated the committee with the following and spoke to a presentation. (Attachment 4)

- The first flood didn't reach the paintings and DoC helped to pump the water out.
- The second flood covered the paintings and drained overnight.
- The damage to the paintings is not yet known.
- Need a restoration plan and assistance with specialist knowledge, machinery and tools.

**5.7 Tuakiri – nga taonga i te Whare Taonga update**

Clark Pirika updated the committee with the following:-

- Te Whare Taonga and Tūhourangi held a wānanga at Te Pākira marae in November 2022. This involved taking taonga from the museum to Te Pākira.
- The hui was transcribed and the draft transcription has been sent to a research analyst. The final transcription will be returned to Tūhourangi.
- Had two recent wānanga, one in April at Tarimano marae with Ngāti Rangiwewehi and in May at Rangitahi marae at Matatā.
- Wānanga with Ngāti Whakaue, Ngāti Pīkiao and Ngāti Tarāwhai are coming up.

Kirikowhai Mikaere informed that she was in Oxford at Pitt Rivers Museum and was involved in repatriating taonga belonging to kuia Makareti Papakura.

**5.8 Tangata - Resilience Planning**

Aneta Morgan updated the committee as below:-

- Te Puni Kōkiri has granted funding which has enabled RLC to engage Hemi Waerea to support marae to develop marae emergency management plans. This work was a result of the gaps identified through the work that was done during covid.
- Have had two workshops at Whakarewarewa. The workshops discussed where the support would come from and what the community need to consider when emergencies happen. 16 marae have shown interest in this programme.

Bruce Horne updated the committee and spoke to a presentation (Attachment 5) as below:-

- Explained the command chart (Slide 8).
- This structure is part of the national structure called CIMS (Co-ordinated Incident Management System). Currently the model is in the 3<sup>rd</sup> iteration. Iwi were included in the structure in 2019 for the first time.



- RLC is leaning heavily on Te Amorangi to support engagement with iwi. Members of Te Amorangi unit are also in other civil defence roles with RLC. They being a Māori lens to the planning.

Kirikowhai Mikaere stated that iwi need to be involved in decision making at the top level of the structure. Iwi have knowledge on crisis management and have stronger connections with their communities, but don't have the resources that councils and CDEM have. Therefore Tūhourangi would like to work closely with the Council through this protocol committee to have strong communication channels.

Kelly-Anne Panapa, Director of Thriving Communities (Rotorua Lakes Council) noted her team's role and willingness to support iwi in developing thriving communities work programme.

#### **5.9 Tangata – Update on Sala St Trees**

Rob Pitkethley spoke to a presentation (Attachment 6).

#### **5.10 Taiao Report – Deliah Balle**

Will be discussed at the next meeting.

#### **5.11 Taiao – Fresh Water Reforms – Deliah Balle**

Will be discussed at the next meeting.

#### **5.12 Taiao – Update on Tarawera wastewater scheme, Waipa/Hemo water take and CNI wastewater irrigation - Kahurangi White-Parsons**

Kahurangi White-Parsons spoke to a presentation (Attachment 7).

- Warena Morgan requested the council to liaise with Rotokākahi Board of Control with regard to their concerns on Tarawera wastewater scheme. Tūhourangi offered to facilitate this discussion.
- The resource consents to take water from Waipā and Hemo springs are due to expire at the end of this year. Currently water is not being taken out from Hemo.

Update on CNI wastewater irrigation scheme is to be provided at another meeting.

### **6. Te Karakia Whakamutunga – Closing Karakia**

Clark Pirika closed the meeting with a Karakia.

**Meeting Closed at 3.25pm.**

Attachment 1



**TARAWERA**  
Okataina Experience

Map showing the route through the Tarawera region, including Lake Okataina, Lake Tarawera, and Lake Rotomahana. The route is marked with a red line and a blue dashed line. A legend on the right lists the route details: Day 1 walking, Day 2 walking (potentially modified), Day 3 walking, Water trails, Accommodation, Water trail on Bay of Plenty, and Tarawera Falls.

- Two night Three day Tarawera - Okataina experience
- Guided walking experience across our whenua with numbers limited to 50 per day
- Comfortable, catered accommodation
- Sharing the cultural, ecological and historical importance of this whenua
- Proposed walk starts at Waimangu and ends at Okataina (beginning the walk at Lake Okataina and ending at Waimangu is also being considered)
- Opportunity to deliver a retail outlet at the end of a memorable experience

[Back to Index](#)

## IWI PARTNERSHIP

Ngāti Rangitihi | Tūhourangi | Ngāti Tarāwhai



-  Iwi owned, Iwi operated business
-  Restricted manuhiri numbers (limited to 50 walkers per day)
-  Employment opportunities for iwi

There will need an opportunity to create a pool of at least 25 to 30 highly trained guides.

The training and on the job experience could then become contributions to a formal qualification for each guide.

## DAY ONE

Day One Walking Distance: 10km






### HIGHLIGHTS

- Youngest Geothermal Valley in the world formed as part of the eruption
- Ōtukapuarangi (Pink Terraces/Steaming cliffs) + White Terraces
- Kaiwaka Stream and the part that played in providing walking access to see the 8th natural wonder of the world
- Accommodation and meals at Te Arika isthmus



## DAY TWO

Day Two Walking Distance: 15km






**HIGHLIGHTS**

- The stories of Tarawera, Ruawāhia and Wāhanga are the stars of this day's walk
- Full immersion in the raw volcanic landscape created by the Tarawera eruption
- Stories of Tapāhoro to finish the day's travel

## DAY THREE

Day Three Walking Distance: 20km



**HIGHLIGHTS**

- Day's travel begins with a visit to Tarawera Falls
- Stunning lakeside walk through regenerating vegetation
- Third stunning lake in three days. Follow Lake Ōkātaina, rounding off at Tauranganui Bay

## VALUE OF BRANDING AS A 'GREAT WALK'



-  Immediate and ongoing profile nationally
-  International profile as part of DOC and Tourism New Zealand promotion
-  Support from DOC around building tracks and maintenance
-  The existing 'Great Walks' are currently weighted in favour of the South Island
-  Chance to share our kōrero and showcase our people to deliver that on a national and international stage






## CULTURAL AND ENVIRONMENTAL FACTORS

### ECOLOGICAL FACTORS

-  Potential effects of track development
-  Track routes
-  Potential hut locations
-  Potential toilet locations
-  Types of toilets
-  Removal of toilet waste
-  Management of human traffic with max daily capacity set and access fees

### CULTURAL FACTORS

-  Culturally important sites
-  Other potential cultural concerns
-  Cultural values and constraints to be treated with respect and as the fundamental underpinning

**Attachment 2**

# Te Putake o Tawa

## Te Putake o Tawa

Art Works : Completed



Kataore



Umukaria



Hinemoa & Tutanekai



Taniko Ketī



Wahiao

[Back to Index](#)



**Te Putake o Tawa**

Blessing of Art Works & Formalities Complete



Mayor Steve Chadwick



NZ First Fletcher Tabuteau



CNI Chair Bronco Carson

**Te Putake o Tawa**

Whanau & Open Public Day : Completed



Te Putake o Tawa

Te Putake o Tawa App Launch : To be completed

Aiming to Launch the App

11 June 2023

At Te Putake o Tawa

[Back to Index](#)



**Attachment 3**



**ROTORUA  
LAKES COUNCIL**

---

## ROTORUA'S FUTURE DEVELOPMENT STRATEGY

---

Tūhourangi Protocol Meeting | 25 May 2023



## WHAT IS THE FDS?

Future Development Strategy

- Our long term (30-year) plan for managing growth and change
- Location of business & residential growth & infrastructure required
- Reviewed every 3 years
- Informs other plans and strategies
- Signals direction of growth



**ROTORUA  
LAKES COUNCIL**

[Back to Index](#)

## GROWTH & CHANGE

**Rotorua District Residential Population**

■ 1996-2013 ■ 2013-2020 ■ 2020-2021

Stats NZ Estimated Residential Population, at 30 June

**+ 9,740 homes by 2050**

**+ 9,320 jobs by 2050**

**Improve housing affordability**

**+ 50 ha new industrial land by 2050**

**Households**

■ Non-family household  
■ Multi-family household  
■ 1 Parent Family  
■ 2 Parents 3+ children  
■ 2 Parents 1-2 children  
■ Couple household  
■ One Person household

Year: 2020, 2023, 2028, 2030, 2033, 2038, 2043, 2050

## PRE-ENGAGEMENT TO DEVELOP FDS

Extensive to ensure understanding all proposed planning changes in relation to: PC9 (Incl. MDRS) & FDS

### 10

Iwi & hapū workshops & one-on-one discussions

### 6

Workshops with community groups, developers, consultants & students

### 2

District-wide workshops with Mana Whenua

### 9

Technical meetings with key government departments & agencies

### 20

One-on-one discussions with businesses, developers, consultants, community interest groups, infrastructure providers & neighbouring Councils

### 1

Lecture series (with open days) at Rotorua Library



## WHAT WE SHOULD CONSIDER

**Culture** - influence how our communities grow

**Choice** - housing choice to meet needs

**Access** - easily access jobs, services, education and quality open spaces

**Connection** - inner city is our social and economic hub supported by centres

**Prosperity** - a strong economy will provide opportunities

**Environment** - committed to protecting & enhancing our environment

**Resilient** -resilient to the effects of climate change & significant natural hazards

**Investment** -investment in safe and reliable infrastructure

## THE DRAFT STRATEGY

Residential

Intensification (MDRS + PC9)

Long term Intensification

Existing residential Greenfield

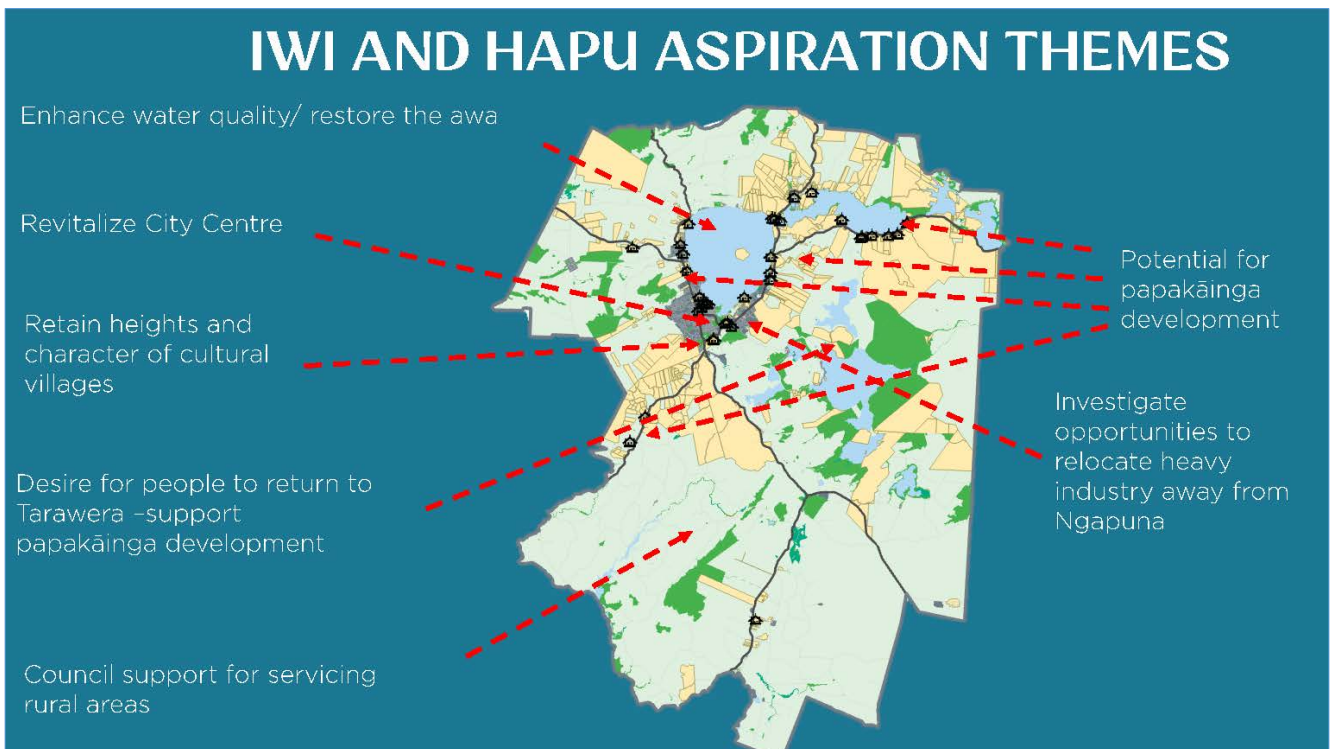
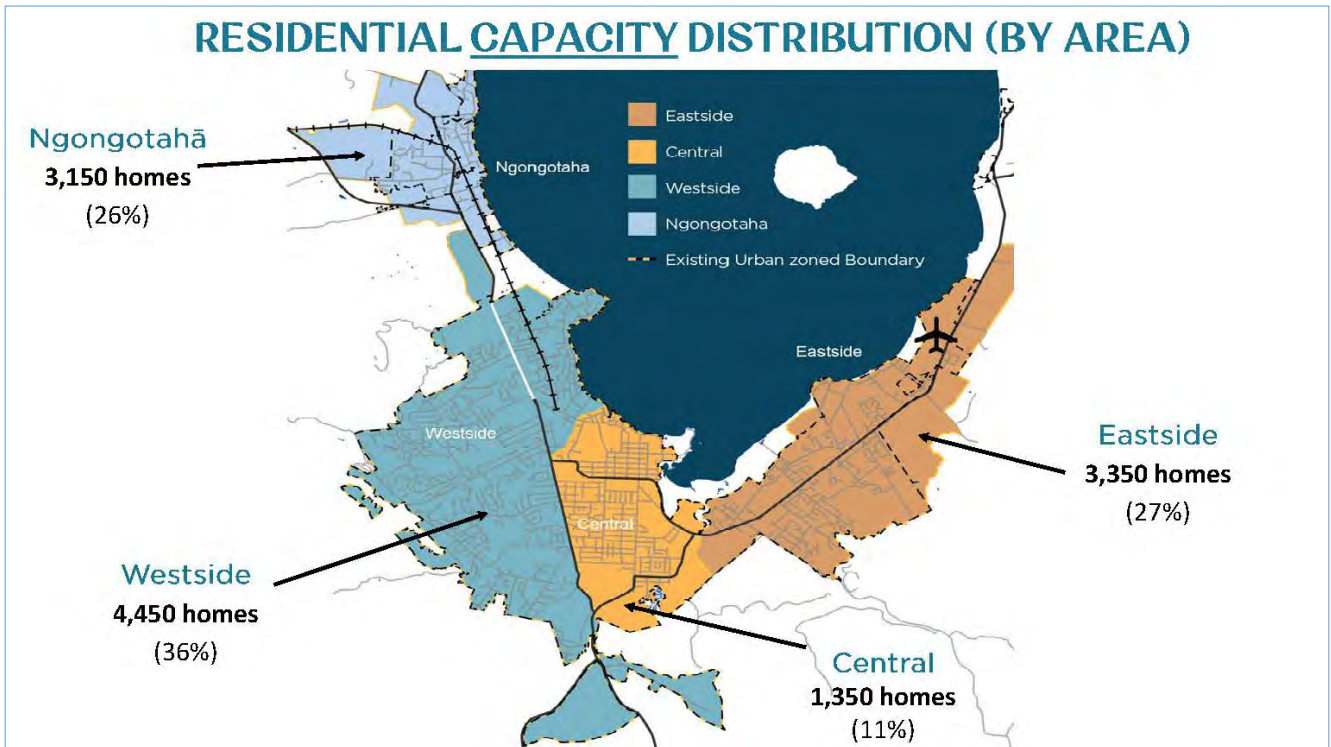
New residential Greenfield

Business

New Commercial Greenfield

New Light Industrial Greenfield

State Highways	High Density Residential Intensification	Proposed Light Industrial
Existing Urban Zoned Land Boundary	Medium Density Residential Intensification	Proposed New Greenfield Development Areas
Urban Areas (No changes proposed)	Mixed Use Intensification	Potential Long-Term High Density Intensification
Existing Rural Lifestyle Areas	New Rural Lifestyle	Existing Greenfield Development Areas
Lakes	Proposed Commercial	Business Uses to Residential Uses
Conservation Land and Reserves	City Centre Intensification	

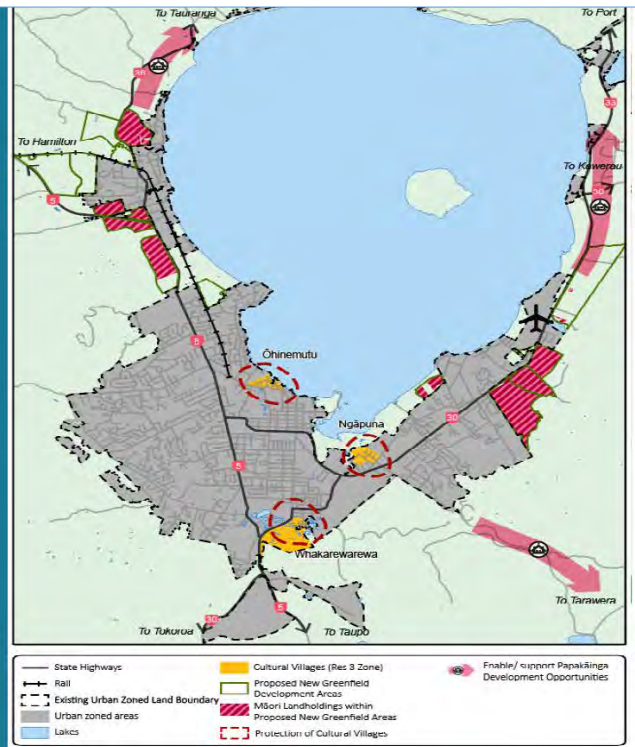


[Back to Index](#)



## STRATEGY TO ACCOMMODATE GROWTH

- New growth areas
- Areas to protect
- Providing support



## FDS PROCESS GOING FORWARD



[Back to Index](#)

**Attachment 4**

# PUNAROMIA

## PUNAROMIA

22<sup>nd</sup> September 2021 Discovery of flood damage

The rock painting pit was full of water but didn't reach the actual paintings. We were aided by DOC to pump out the water



[Back to Index](#)

**PUNAROMIA**

22<sup>nd</sup> September 2021 Discovery of flood damage

The washout that caused the trail of the water to the rock painting pit



**PUNAROMIA**

22<sup>nd</sup> September 2021 Discovery of flood damage

The washout that came from the culvert to the orchard area itself





**PUNAROMIA**

27<sup>th</sup> July 2022 Discovery of flood damage after another big down pour

The paintings were fully submerged but drained over night



**PUNAROMIA**

27<sup>th</sup> July 2022 Discovery of flood damage after another big down pour

Even more silt and rock from the culvert pour onto the orchard





**PUNAROMIA**

25<sup>th</sup> August 2022 Bund created by RLC

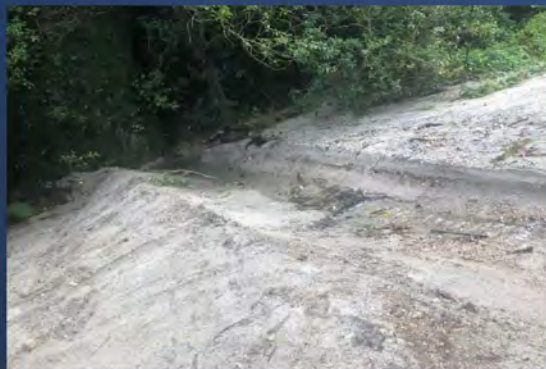
To direct the water from the farms on the other side of Tarawera Road through the culvert under the road



**PUNAROMIA**

25<sup>th</sup> August 2022 Flow water away from rock painting pit

Culvert dug out to allow water to flow from spring to the lake. Left open to avoid blockages.



**PUNAROMIA**

30<sup>th</sup> August 2022 Bund created by RLC

To direct the water from the farms on the other side of Tarawera Road through the culvert under the road. Some minor repairs were done after some of the bund was washed out and things are holding well

**PUNAROMIA**

Where to now!!

There have been some extremely heavy down pours and both the bund and the culvert have done their jobs well.

TTA are developing a restoration plan now that we are assured that the washouts have been mediated.

May need assistance with refining the plan from someone with those skills. As well as some assistance with tools or machinery we may need.

Once the plan is set we will call upon our people to assist. We will also use the time to have some historical/tatai korero.

There will also be a need to get specialist assistance with the rock paintings themselves and their covering.

[Back to Index](#)



Attachment 5

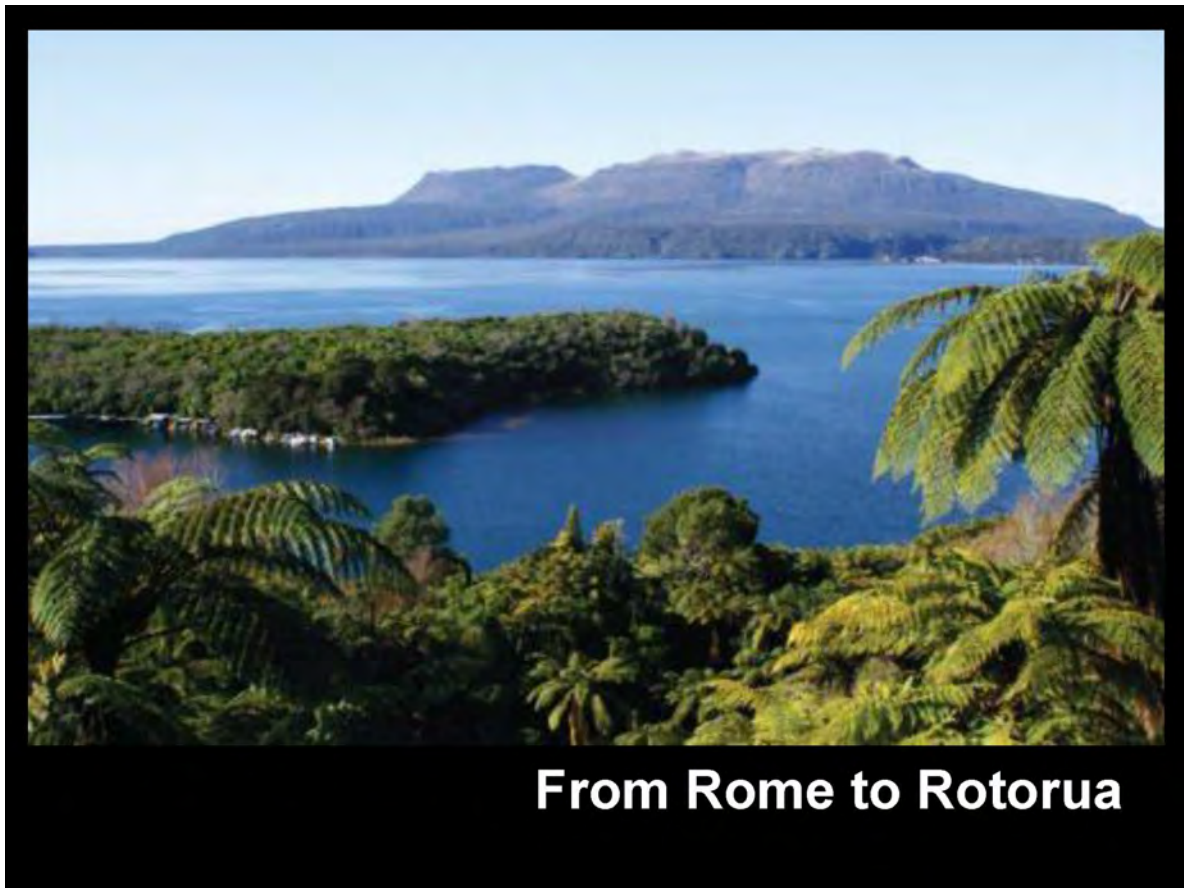
# Civil Defence, Emergency Management & Tuwakawaka (Resiliency Project)



 **Civil Defence: the idea is not new**

**ROTORUA**  
LAKES COUNCIL

[Back to Index](#)



## What is Civil Defence?

It's not a **thing**; it is communities, organisations and government **working together** to **get ready** and **get through** an emergency. **We are all Civil Defence.**

 Crown – Iwi partnership	<b>Community</b>    	<b>Utility Companies</b>    	<b>Welfare Service Agencies</b>    	<b>Emergency Services</b>    	
-----------------------------	----------------------------------	--	---	---	--

**ROTORUA LAKES COUNCIL**

[Back to Index](#)

## **The 4R's**

**Reduction:** *Identifying risks, taking steps to either eliminate or reduce the impact of risks*

**Readiness:** *Developing operational systems and capabilities before an emergency – for the public, emergency services and other agencies*

**Response:** *Facilitation of a co-ordinated, inter-agency response to an emergency event*

**Recovery:** *The coordinated effort to bring about regeneration of a community following a civil defence emergency*

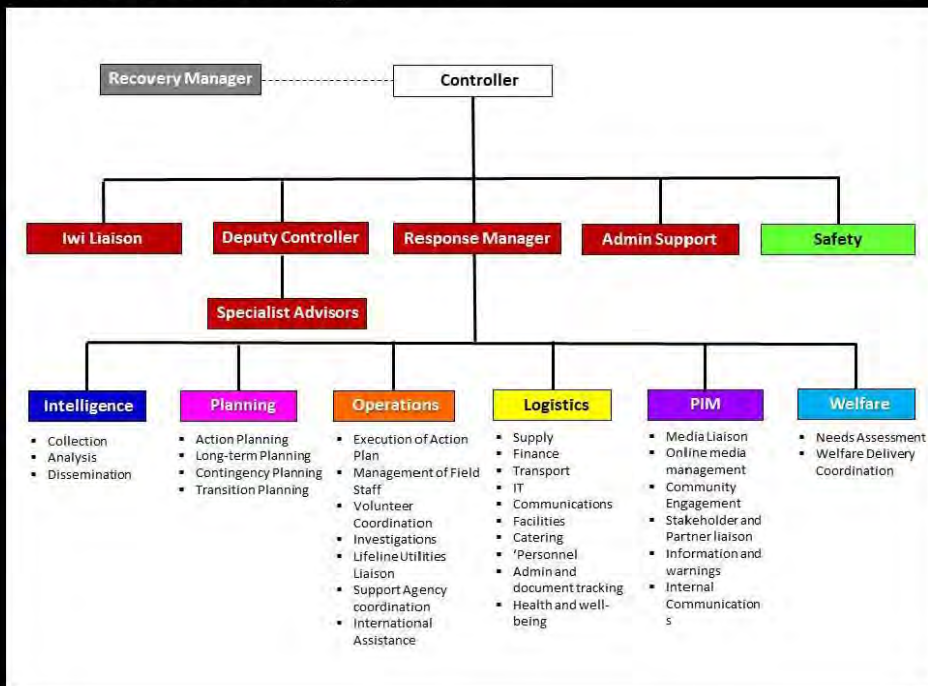
**But for the 4R's to work, you need the most important R of all - relationships**



# Role Clarification Civil Defence & Emergency Management



## Emergency Management – National template



[Back to Index](#)





## “RESILIENT COMMUNITIES ARE BUILT ON THRIVING COMMUNITIES”

Enabling Community Action	Homes and Thriving Communities	Equitable Voice and Community Participation
Wellbeing Strategy	Emergency Housing Taskforce	Child Equity
Community Engagement Framework	Healthy Homes	Tamariki and Rangatahi Voice and Development
Community Investment	Locality Planning <ul style="list-style-type: none"> <li>• Eastside</li> <li>• Westside</li> <li>• Ngongotahā</li> </ul>	Accessibility Welcoming Communities

[Back to Index](#)



**Attachment 6**

## Background: Puarenga Tree Concerns

During Cyclone Gabrielle, several streamside trees failed along both sides of the stream bank in Sala St. There were excessive cyclonic winds at this time with very high rainfall and stream flows. Threats were too:

- Power lines,
- State Highway 30
- Residences across the road.

Resident concerns about safety of large trees (gums) especially with stream bank erosion effects and future high intensity weather events



Sala St Reserve trees on western side of stream

Crown Land and trees on eastern side of the stream have also failed



## Tree Inspection and physiology:

These trees were inspected in 2018 and no significant issues were raised

The trees were inspected by the Kaitohu Rākau Tāone/Urban Forest Advisor on 26/04/2023 and the results assessed. 22 trees were inspected.

For many of the trees there is no immediate condition concern with tree health.

However 19 trees have been identified for removal over a varying priority interval between 1 to 12 months due to:

- Substrate erosion/root plate exposure by stream action
- Increased wind-throw risk due to climate excesses
- Caution around tendency of dominant species to 'summer branch drop'
- Proximity of trees to power infrastructure and highway (elevated consequential risk)
- Knock-on effect of failures from the right bank trees.



**ROTORUA  
LAKES COUNCIL**  
The Environment is our Priority



Tree location close to stream on steep banking which is being undercut in storm flows



Storm debris:  
Limbs and branches falling  
onto the footpath /  
cycleway



Tree proximity above  
footbridge



Stem damage in proximity  
to the footbridge.





Pruning wound from earlier large limb removal



Young tree beginning to act as a lever threatening bank stability.



Lack of a 'contoured' forest edge.

Note - no trees were in falling range of dwellings



The 40m high 'Lion-tail' gum.

Lateral (side) branches afford valuable dampening effect in high winds. When removed, the stem can oscillate beyond its own strength and may fail.



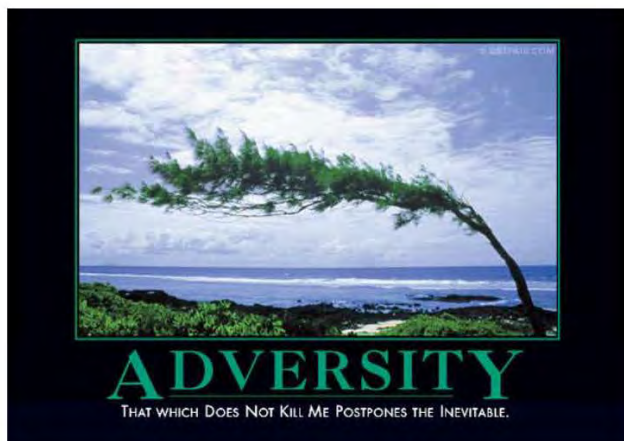


## NEXT STEPS (PRIORITIES)

- From July 2023 begin process to remove trees
- Fell all 'High' priority trees before June 2024 (13)
- Fell/consider all 'Discretionary' trees thereafter (9)

However.....

Given the cost of traffic management and possibly heavy lifting gear it may prove preferable to remove all categories in the one operation subject to project budget availability.



Tēnā koutou!

Thank you!



## Attachment 7



# IWI ENGAGEMENT

- Tarawera Wastewater Scheme
- Waipā & Hemo puna water supply
- Sustainable Forest Approach

---

Tūhourangi Protocol hui – 25th May 2023



TE KAUNIHERA  
O NGĀ ROTO O ROTORUA

## Tarawera wastewater Scheme

Te Pūtaiki o Tarawera



- Siting of pump on RP6J2B5B
- Fulton Hogan site works RP6G3B
- Karakia Whakanoa, Cultural induction and Whakatau – 18<sup>th</sup> April 2023
- Programme
  - Stage 1 – roadwork
  - Stage 2 – property connections



TE KAUNIHERA  
O NGĀ ROTO O ROTORUA

[Back to Index](#)



# Waipā & Hemo puna water supply

## Working group



- Resource consent for two puna
- No changes to current allocation
- Submit application 31<sup>st</sup> July 2023
- Iwi and hapū representatives
  - Tūhourangi Tribal Authority
  - Te Kōmiti Nui o Ngāti Whakaue
  - Ngā Hapū e Toru



TE KAUNIHERA  
O NGĀ ROTO O ROTORUA

## Sustainable Forest Approach

### Wetland development

September 2022 increased iwi hapū representation on Puarenga Reference Group (PRG)

- 3 site visits within forest
- Alternative sites along SH5
- Assessing cultural values
- Next PRG meeting June 2023



TE KAUNIHERA  
O NGĀ ROTO O ROTORUA

[Back to Index](#)

## 4 Ngā take kua puea ake I ngā meneti - Actions arising from previous minutes

### 4.1 Actions from Tūhourangi Meeting held 25 May 2023

The following items to be addressed within agenda:

#### SUMMARY OF ACTION POINTS

Subject	For action by	Action	Update
Tarawera Landing café ownership and management options	RLC	Council to discuss with DoC prior to end of June and get a formal letter to them on the intended process for returning the land to Tūhourangi.	<p>In late June a letter was sent to the Department of Conservation seeking feedback on the proposed process to give greater recognition to Tūhourangi's relationship with Waitōharuru (Attachment 1). Receipt of this letter was acknowledged on 27 June noting that it was lodged with the Department's Statutory Land Management (SLM) Team. We have been communicating with the DoC Operations Manager through the July to September period to see if there has been any action on a response from the SLM team. The latest information received in early October is that the DoC SLM Team has been short staffed and have a significant backlog of work to get through. The Rotorua DoC Office have requested it be given a high priority and are still awaiting a timeline for when it might be responded to.</p> <p>A planning review of the Tarawera Reserve Management Plan and correspondence when it was created, has led to the conclusion that issuing a new lease for the Tarawera Landing Café does not require an amendment to the Reserve Management Plan. Consequently the Council would like to work with Tūhourangi on drafting a suitable lease for ongoing operation of the Tarawera Landing café.</p>

[Back to Index](#)

## Attachment 1



27 June 2023

Doc No: ID 19866673

Zane Jensen  
Operations Manager  
Department of Conservation  
Email: zjensen@doc.govt.nz

Kia ora Zane

Waitōharuru (Tarawera Landing Reserve) is classified as a recreation reserve under the Reserves Act 1977. The reserve is significant to Tūhourangi hapū who are mana whenua of the area and contains significant heritage values. Greater recognition of Tūhourangi's relationship with the area is sought by both Council and the hapū. In seeking to achieve this, in 2020 Council resolved to commence the process to revoke the reserve classification and return the ownership of the land directly beneath the café building to Tūhourangi. However DOC later signalled that revocation would be difficult to provide approval for, and all parties agreed that DOC and Council would review the mechanisms available and continue kōrero with Tūhourangi Tribal Authority.

With a reserve revocation process unlikely to be successful, the vesting of the reserve in a Tūhourangi Trust is considered the next best alternative option. Recent discussions with DOC have been positive, and staff have shown a genuine desire to support their treaty partner Tūhourangi, and Council. Advice from DOC is that the vesting of the reserve in a Tūhourangi trust is reasonably likely to be approved by DOC if it can be demonstrated that a Tūhourangi trust can better administer the reserve.

Council is proposing a stepped approach to enable the vesting of the reserve in Tūhourangi, as the reserve administering body, that would increase the capability of the Trust and demonstrate that Tūhourangi are best place to administer the reserve. The proposed process includes a number of steps as outlined below:

Step	Explanation
1. Change the classification of the reserve from recreation to historic reserve	Council undertake a process to change the classification of the reserve to Historic Reserve to recognise the significant cultural heritage which exists within the reserve area.
2. Establish joint reserve committee	Reserve committee established with the intention to enable shared operational decision making
3. Tarawera Landing Historic Reserve vested in Tūhourangi trust	Tūhourangi trust becomes the administering body of the historic reserve charged with the duty of administering, managing, and controlling the reserve under its control and management in accordance with the Reserves Act 1977

📍 Civic Centre, 1061 Haupapa Street, Private Bag 3029,  
Rotorua 3046, New Zealand

☎ +64 7 348 4199 | 📧 info@rotorualc.nz

🌐 rotorualakescouncil.nz

[Back to Index](#)



2

Tūhourangi will also take over the lease and/ownership for the existing café building. The existing ground lease for the building is due to expire in December in 2023. The building is the original ticketing office for the tourist services from the reserve and subsequently has historic significance. The building is owned by the existing tenant and ownership of the building would need to be negotiated.

The purpose of this email is to seek advice from the Department of Conservation on the process outlined and specifically to get clarity as to whether:

1. DOC support in principle, Tūhourangi having more control and decision making over the reserve, recognising the significance of the site to the hapū,
2. DOC support the process outlined above as a mechanism to enable the vesting of the reserve in a Tūhourangi Trust, and/or
3. There is an alternative approach that council should consider that would achieve the same outcome.

Ngā mihi nui



**Rob Pitkethley**  
Active & Engaged Communities Manager

## 5 Ngā pūrongo ā-waha – Verbal Reports

---

5.1 Marae Emergency Management Planning – Aneta Morgan




5.2 Update on Trade Waste Applications to Marae – Alison Lowe

5.3 Update on Tarawera wastewater scheme, Waipa/Hemo water take and CNI wastewater irrigation - Kahurangi White-Parsons

5.4 Operational Report - Rob Pitkethley

5.5 3 Waters Asset Summary

# 3 Waters Asset Summary

	<p><b>Water supply</b></p>	<p>Ten defined supply areas including three urban areas Eleven water sources Nine water supply treatment plants Approximately 768km of pipelines 15 water pump stations <b>Replacement Value=\$300M (Currently being reviewed)</b></p>
	<p><b>Wastewater</b></p>	<p>405 km of gravity pipelines and 150km rising mains Services three urban areas of Rotorua (Ngongotahā, city and eastern suburbs) and some rural lakeside communities Two wastewater treatment plants 81 wastewater pump stations <b>Replacement Value=\$600M (Currently being reviewed)</b></p>
	<p><b>Stormwater</b></p>	<p>284km urban reticulated pipelines 153km of open drains Service three urban areas of Rotorua (Ngongotahā, city and eastern suburbs) Reporoa land drainage scheme <b>Replacement Value=\$300m (Currently being reviewed)</b></p>

[Back to Index](#)

## 6 Te Karakia Whakamutunga - Closing Karakia

[Back to Index](#)