

GOVERNANCE AND MANAGEMENT

- 21 Mayor and Councillors
- 22 Management
- 23 Community Outcomes

Mayor and Councillors



His Worship the Mayor
Kevin Winters JP



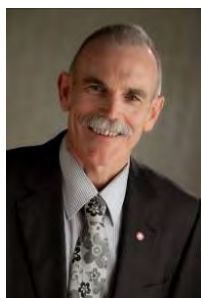
Cr Trevor Maxwell MNZM
Deputy Mayor



Cr Maggie Bentley



Cr Julie Calnan JP



Cr Dave Donaldson QSM



Cr Mark Gould JP



Cr Karen Hunt



Cr Mike McVicker



Cr Merepeka Raukawa-Tait



Cr Glenys Searancke QSM



Cr Charles Sturt

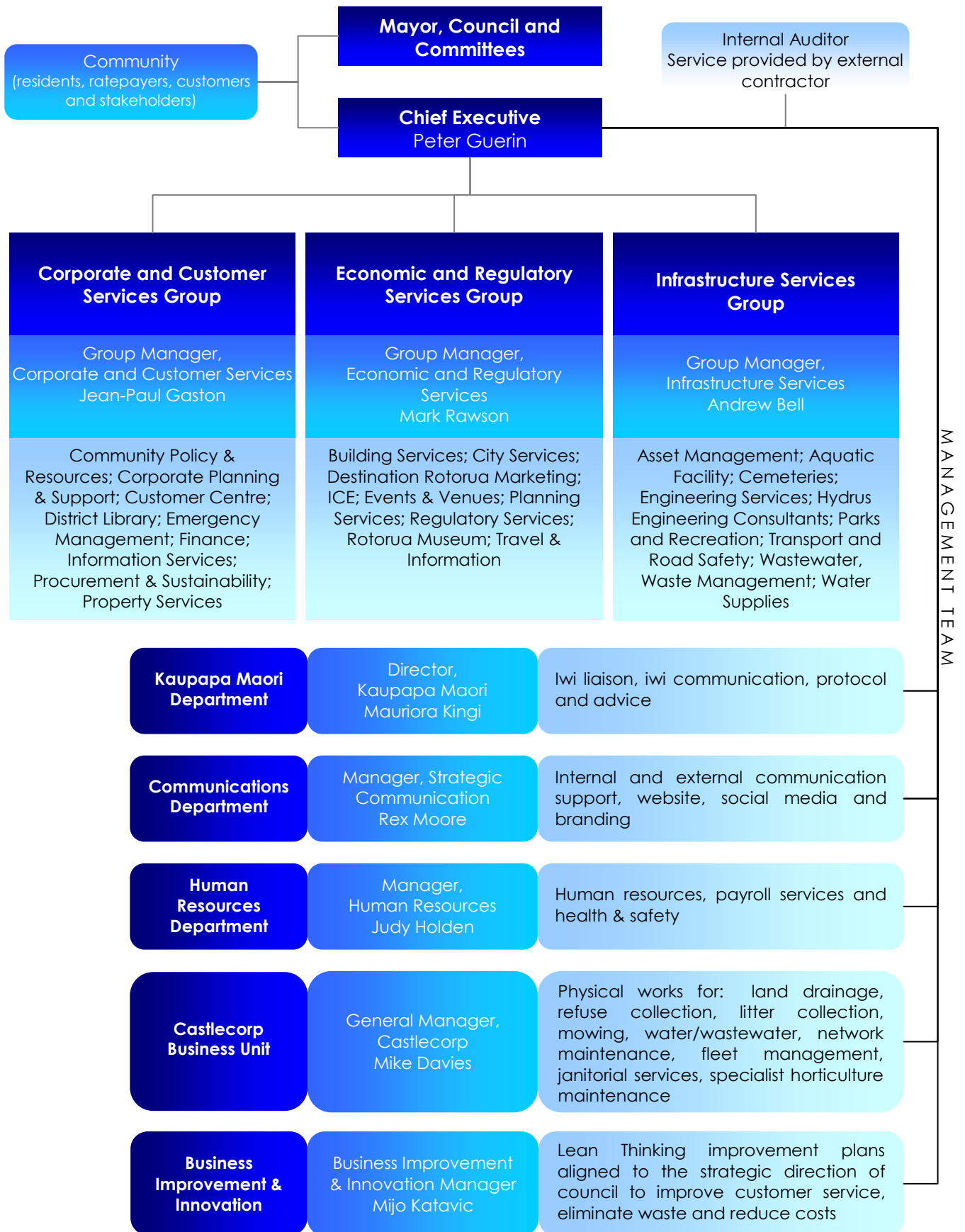


Cr Maureen Waaka, MNZM, JP



Cr Janet Wepa

Management



Council objectives

A strategic framework called 'Bright Future Rotorua - Community Outcomes' originally provided an overarching set of strategic goals that council and other organisations used to guide service delivery and resource allocation. The community outcomes were a focal point for promoting closer working relationships to ensure resources are used effectively and in a coordinated manner.

Amendments made to the Local Government Act in 2010 have changed the focus of community outcomes. They are now seen as statements of what councils want to achieve – the council's high level objectives. Freedom has been given to councils to decide how best to structure these outcomes and how to monitor and report on them.

During the 2011/12 year, while preparing the Long-term Plan 2012-2022, Council decided that their

objectives were well-reflected in the existing community outcomes framework. This framework was developed with extensive community input and the key priorities of the community have been tested over the last six years. With this in mind Council focused on re-defining its role, with minor changes, to better reflect increased emphasis on aligning the goals of its services to the strategic long term goals of council. Through this the community outcomes become the council objectives.

The council's eight outcomes are linked by 'visionary community leadership', with each considered of equal importance. Together these objectives provide the basis for what the council wants to achieve for a bright future and a successful Rotorua. The updated council objectives are shown in the diagram below.



Council objectives cont.

Visionary community leadership

Overarching these community outcomes is a desire by council to exercise visionary, inclusive leadership, supported and fostered within Rotorua communities

Ko te tūāpapa e whakamaru ana i nga whāinga ā hāpori he ākina na te kaunihera ki te whakamahi i ana tirohanga whakamua, tōna rangatiratanga, mā nga hāpori o Rotorua e tautoko e kōkiri



- Rotorua communities have a clear vision for sustainable development, prosperity and wellbeing.
- Communities are informed and engaged in planning and developing the district's future.
- Organisations and communities work together at all levels to achieve shared outcome.
- Maori are respected as partners in decision-making and have a voice in issues affecting the district.

Safe and caring

A community in which our families and whanau feel safe, strong and supported

He hāpori e haumarua ana e tautoko nuitia ana i ngā whānau



- Safe homes and streets
- Fewer road accidents
- Organisations working together on agreed priorities
- Providing safe public spaces
- Families and whanau work, play and talk together
- Strong sense of community spirit
- Respect for cultural diversity/strengthening relationships between all cultures
- Support for new New Zealanders to become part of the Rotorua community
- Support for young people and older people`

Prosperous economy

A district with a reputation as an attractive place to live, work and play, with desirable living and skills standards, and sustainable economic growth

He rohe e rongonuitia ana mo te noho mo te mahi me te tākaro, he pai kē atu nga āhuatanga e paana ki te ōranga, te noho me te toko ake i te taha whai hua



- Encouraging private enterprise
- Enhancing tourism as an iconic sector of Rotorua's economy
- Encouraging development of Māori land and resources
- Reducing unemployment rate
- More investment in our district
- More employment opportunities
- More new business
- Celebrating and promoting our district's unique qualities
- Encouraging growth
- An attractive and lively city centre
- Sustainable development
- Geothermal resources

Excellent facilities and services

A well planned district that is easy to get around, has essential services available to everyone, and offers accessible quality facilities that promote vibrancy.

He mārama te haerere haere i roto i te rohe, he rātonga me nga rātonga whare e wātea ana ki te katoa



- Easy to get from place to place
- Good, safe, maintained services and facilities
- Provision of good quality event, conference and tourism facilities
- Good quality infrastructure for future
- Excellent reliable communication infrastructure
- A great trans-Tasman airport

Council objectives cont.

Environment

A district where we value our environs, understand and respect our lakes, streams, forests and geothermal resources, and where the community is committed to protecting, monitoring and improving the natural environment.

He rohe e ngākau nuitia ana ki tōna taiao, te tiaki i nga roto, nga awa, nga ngāhere me nga puna ngāwha, ko tā te hāpori he whakahi i nga ahuatanga o tiaki i te taiao

- Looking after our air, land and water resources
- Improved lake water quality
- Beautiful, litter-free urban environments
- Waste reduction, re-use and recycling
- Kaitiakitanga (guardianship)
- People using and enjoying our natural environment
- Historical sites and buildings are protected and promoted
- Managing and protecting geothermal resources and our springs, trout, lakes, forests, geysers
- Encouraging sustainable modes of transport



Living Maori culture

A district where the history of Te Arawa in the district and the value of Maori culture is recognised and fostered.

He rohe tēnei e whakanuia ana e tiaki ana e pupuri ana i nga kōrero o nehe rā e paana ki a Te Arawa

- Preservation and sustainable development of Maori resources
- Respecting Te Arawa as part of the unique heritage of Rotorua district
- Celebrating and nurturing traditional Maori culture
- Maori are respected as partners in decision-making and have a voice in issues affecting the District



Learning

A district offering opportunities to expand the minds of its community, to explore ideas and to form strong well supported opinions.

He hāpori e tuku ana i ētahi huarahi angitu hei whakarahi ake i te tirohanga o te hāpori me te rangahau i ētahi atu ara hou hei whaingā ma te katoa



- Learning activities accessible for everyone

Thriving

An exciting place offering a wide range of activities and events, where diversity is encouraged and creativity inspires.

He waahi e hihiko ana e tuku ana i ētahi matatinitanga me ētahi kaupapa nunui hei haerenga mā te hāpori me te iwi whānui



- Lots of events including sporting, cultural, festivals, arts
- Leading edge activities and events
- Foster artistic expression, art, music, dancing, public performances and exhibitions
- Great facilities to visit e.g. museum, arts village, aquatic centre

Healthy

A community that is healthy and active, where air and water is of the highest quality, and where parks, reserves, walkways, cycleways and programmes encourage participation in recreational activity at all levels.

He hāpori hauora, hāpori kakama he rawe katoa te hau me nga ara wai. E wātea ana nga papa rēhia, nga whenua rāhui, nga ara hikoi, nga ara paihikara hei waahi tākaro mā te katoa



- Increasing recreational opportunities
- Safe drinking water
- Improved youth health
- Effective responses to developing health issues
- Warm, healthy homes
- Geothermal