

# Implementation of Strategic Direction



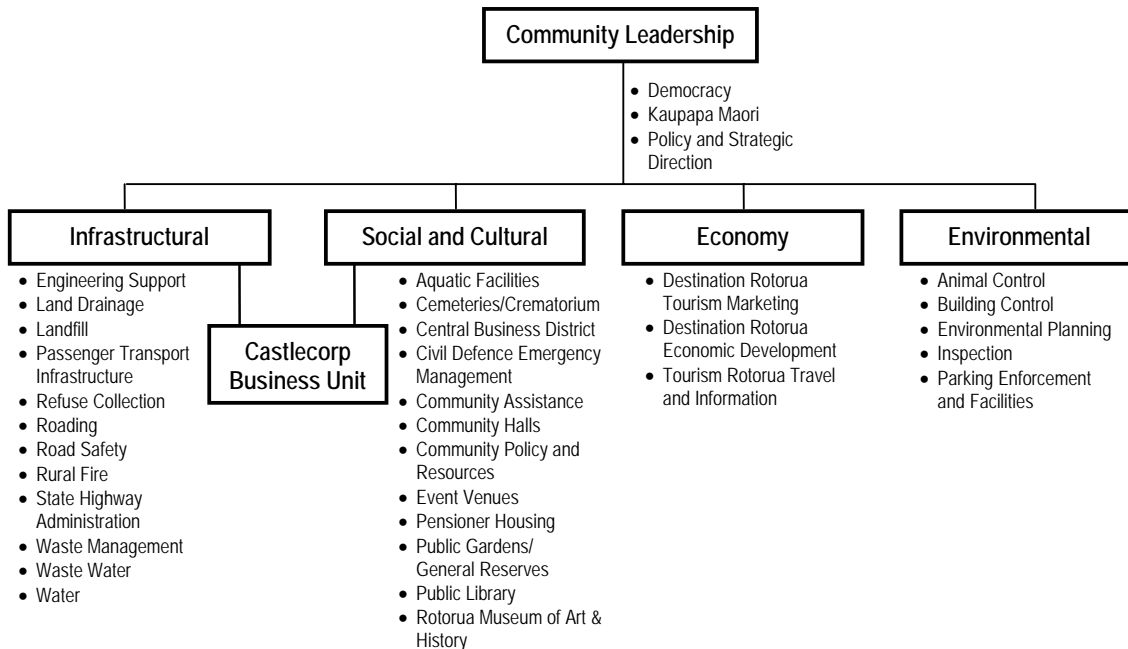
# INDEX TO ACTIVITY GROUPS

	Page No.
<b>Groups of Activities</b> .....	30
<b>Community Leadership Group</b> .....	31
Democracy .....	32
Kaupapa Maori .....	34
Policy and Strategic Direction .....	35
<b>Social and Cultural Group</b> .....	37
Aquatic Facilities .....	38
Cemeteries/Crematorium .....	39
Central Business District .....	40
Civil Defence Emergency Management .....	41
Community Assistance .....	42
Community Halls .....	43
Community Policy and Resources .....	44
Event Venues .....	46
Pensioner Housing .....	48
Public Gardens/General Reserves .....	49
Public Library .....	51
Rotorua Museum of Art & History .....	53
<b>Environmental Group</b> .....	55
Animal Control .....	56
Building Control .....	57
Environmental Planning .....	58
Inspection .....	60
Parking Enforcement and Facilities .....	61
<b>Economy Group</b> .....	62
Destination Rotorua Economic Development .....	63
Destination Rotorua Tourism Marketing .....	65
Tourism Rotorua Travel and Information .....	67
<b>Infrastructural Group</b> .....	68
Engineering Support .....	70
Land Drainage .....	72
Landfill .....	73
Refuse Collection .....	74
Roading .....	75
Road Safety .....	77
Rotorua Regional Airport .....	79
Rural Fire .....	80
State Highway Administration .....	81
Waste Management .....	82
Waste Water .....	83
Water .....	85
<b>Castlecorp Business Unit</b> .....	87

# GROUPS OF ACTIVITIES

This section outlines all of the activities of the Council and includes information so that the community can see how we

plan, manage, deliver and fund Council's activities. This section has been divided into six activity groups, which are:



## Community Leadership Group

This group of activities underpins Council's democratic processes and provides the policy and priorities for strategic direction, advocacy, and delivery of services to best meet the community's needs.

The activities in this group are central to ensuring that Rotorua District Council's services are contributing towards the promotion of community outcomes and improving social, cultural, economic and environmental wellbeing for the people of the district.

## Infrastructural Group

Activities included in this group provide many of the traditional key services associated with councils such as water, sewerage, roads and refuse collection. In this area Council owns and manages many large and complex assets on behalf of the community.

## Social and Cultural Group

The activities in this group enhance the district as a place to live. Many of the services provided through these activities are recognised as very important to the community and would not be able to be provided to the level expected without Council's contribution and involvement.

## Economy Group

Rotorua District has a thriving tourism industry contributing to a strong economy, supported by several other sectors. The activities in this group ensure that we maintain and grow the district's prosperity for the benefit of all.

## Environmental Group

These activities reflect Council's role in natural resources management and regulation. The activities help us to plan for the future and make sure that everyone gets a fair deal, often having to balance competing rights of individuals and groups to do different things in the community.

## Castlecorp Business Unit

Castlecorp is a separate business unit within the Rotorua District Council. Its purpose is to provide infrastructural services to the residents of the district 365 days per year for:

- Water
- Waste water
- Refuse
- Land drainage
- Parks and reserves
- Sports fields
- Public gardens
- Fleet maintenance