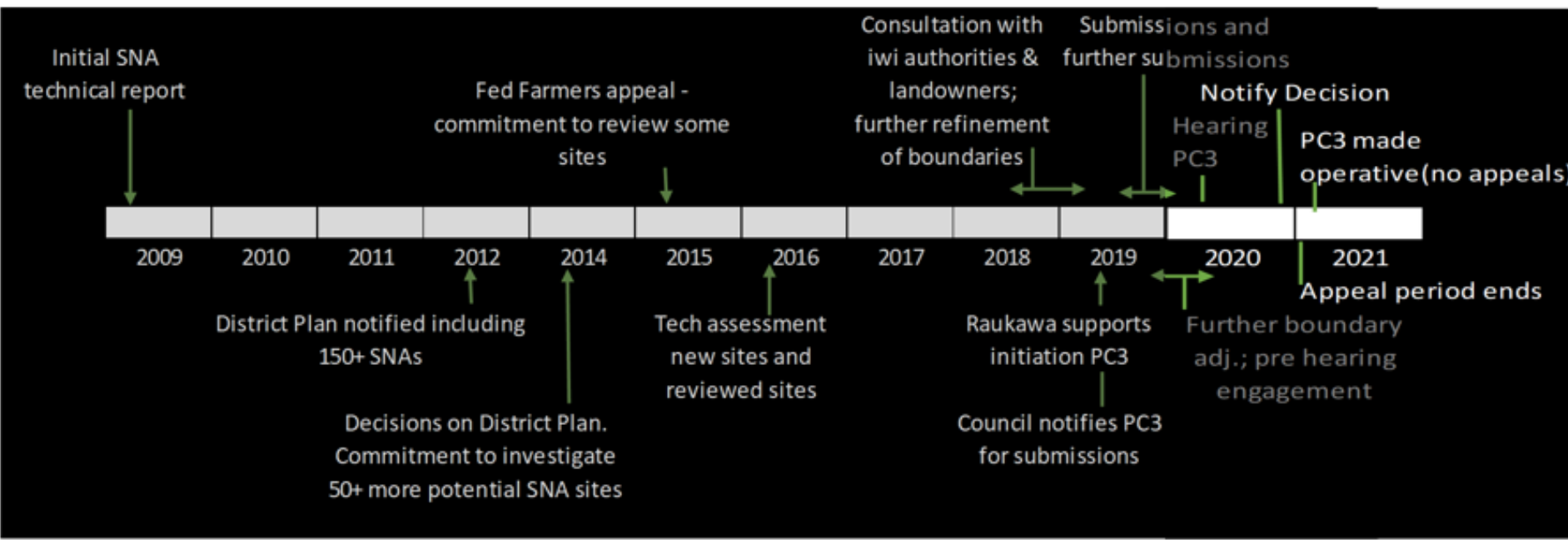


A close-up photograph of several green fern fronds, showing the intricate, feathery structure of the leaves. The fronds are vibrant green and set against a blurred background of more foliage.

# Plan Change 3: Significant Natural Areas

# Why?

- NZ is an international priority for conservation
- Protection SNAs a matter of national importance
- Give effect to RPSs
- Council Commitment 2014 to investigate 50+potential sites sites
- Council commitment to review boundaries of some sites (Fed Farm appeal)



Initial SNA technical report

Fed Farmers appeal - commitment to review some sites

Consultation with iwi authorities & landowners; further refinement of boundaries

Submissions and further submissions

Notify Decision  
Hearing PC3

PC3 made operative (no appeals)

2009

2010

2011

2012

2014

2015

2016

2017

2018

2019

2020

2021

District Plan notified including 150+ SNAs

Decisions on District Plan. Commitment to investigate 50+ more potential SNA sites

Tech assessment new sites and reviewed sites

Raukawa supports initiation PC3  
Council notifies PC3 for submissions

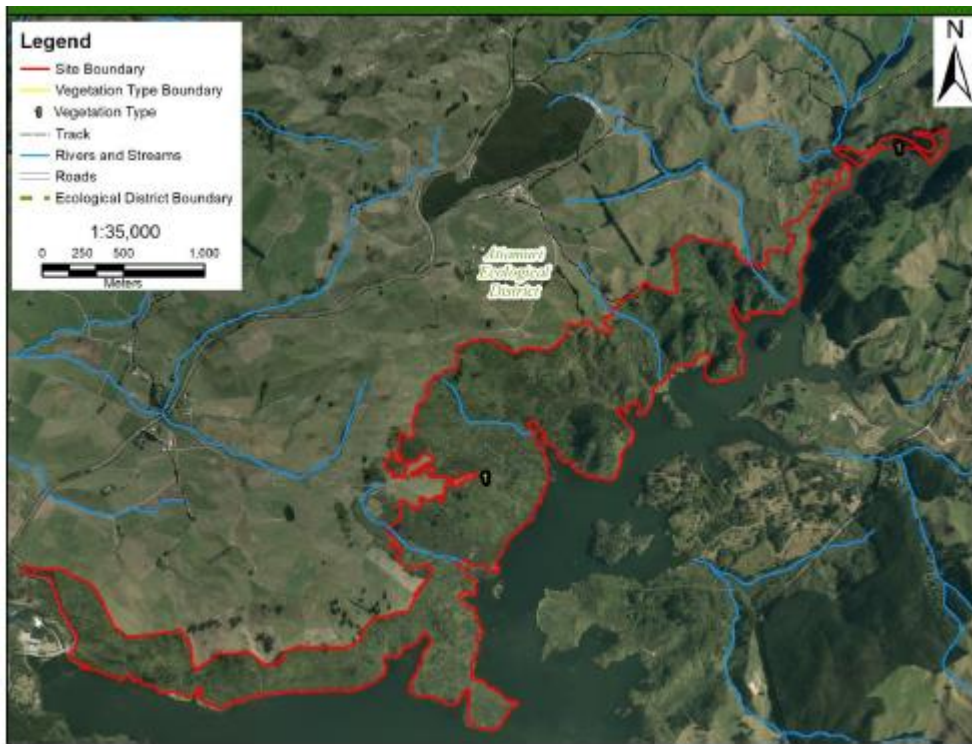
Further boundary adj.; pre hearing engagement

Appeal period ends



# Scope:

- Considers scheduling of 50+ sites as new SNAs or extensions.
- Also reviews boundaries some existing SNAs.
- No changes to the rules/policies
- Expert advice from Wildland Consultants
- Independent commissioners



## SNA 585 – Lake Ohakuri NW Riparian Faces

- Dab chick (threatened)
- Secondary forest and scrub
- Large, regionally significant habitat





## SNA 718 – Western Te Kopia

- Nationally uncommon habitat - geothermal
- Populations of at risk species incl. prostrate kānuka

# Commissioners' Recommendations

- Generally adopt the areas ecologists identify as significant.
- Only very limited exclusions e.g. near Ohakuri Dam
- Sites with alternative legal protection excluded
- Commissioners revised recommendations due to technical issue of scope – properties not affected by plan change in notified proposal remain excluded.

# Recommendation:

- Adopt commissioners' recommendations

## Next Steps

- Submitters (and land owners) notified
- Ability to appeal to Environment Court