

2 June 2022

Operations and Monitoring Committee

Rotorua Lakes Council

Darren Toy
Bay of Plenty Regional Director



Ranolf Street Malfroy Road

Kāinga Ora - what we do

- New Crown agency established 1 Oct 2019
- Brings together people, capabilities and resources of KiwiBuild, Housing New Zealand and its development subsidiary HLC

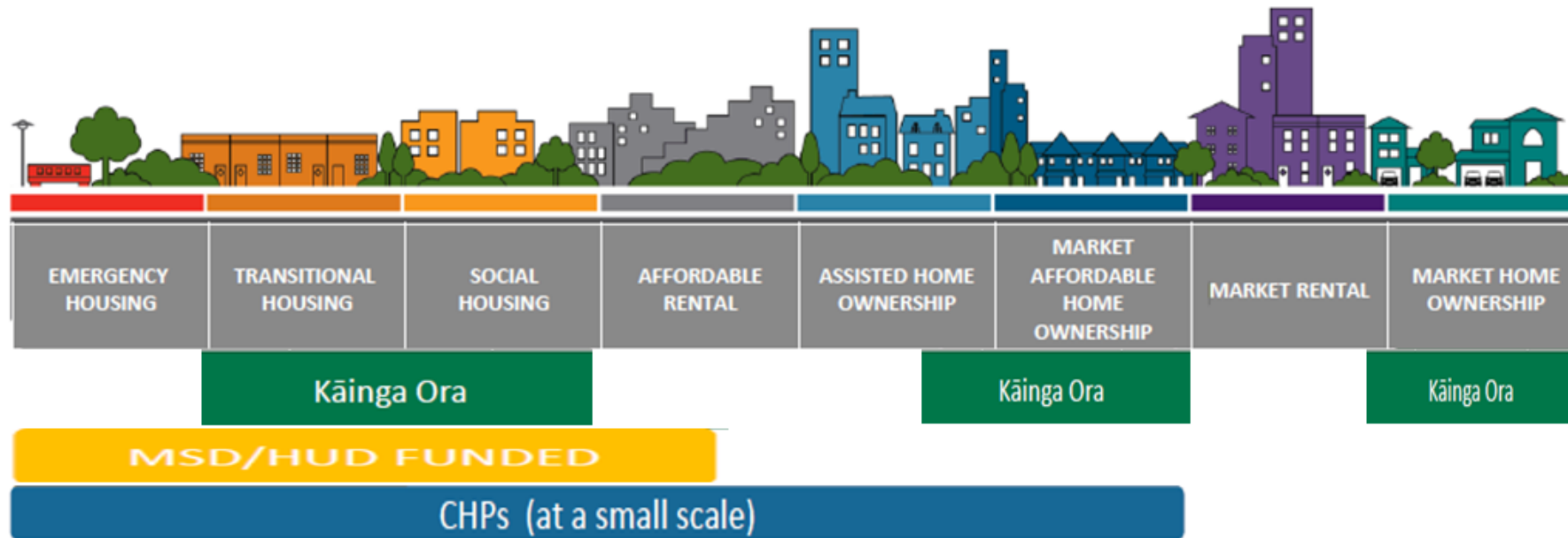
Six outcomes

- Sustainable, inclusive, thriving communities
- Good quality, affordable housing choices
- Partnering with Māori
- Customers living well in their homes
- Environmental wellbeing is enhanced and preserved
- Using our scale and expertise to make change within the construction sector



Housing Continuum

Where Kainga Ora currently operates across the housing continuum



Kāinga Ora structure

Place-based delivery and decision making

- 12 regions, formed into three super-groups - Tāmaki Tai Tokerau - Auckland & Northland, Te Puku Ikaroa - Central, Te Waipounamu - South Island
- Decentralising to regions - operations, community engagement, investment planning
- Support from centres of expertise with a nationwide span, including construction, urban development and strategy



Supporting our customers to live well in their homes

- Taking a strengths-based approach, we support and guide our customers, so they have choice and control to make the best wellbeing decisions for their whānau
- We maintain in-depth knowledge about local support services
- Build strong partnerships, so we can help customers understand the options available to them



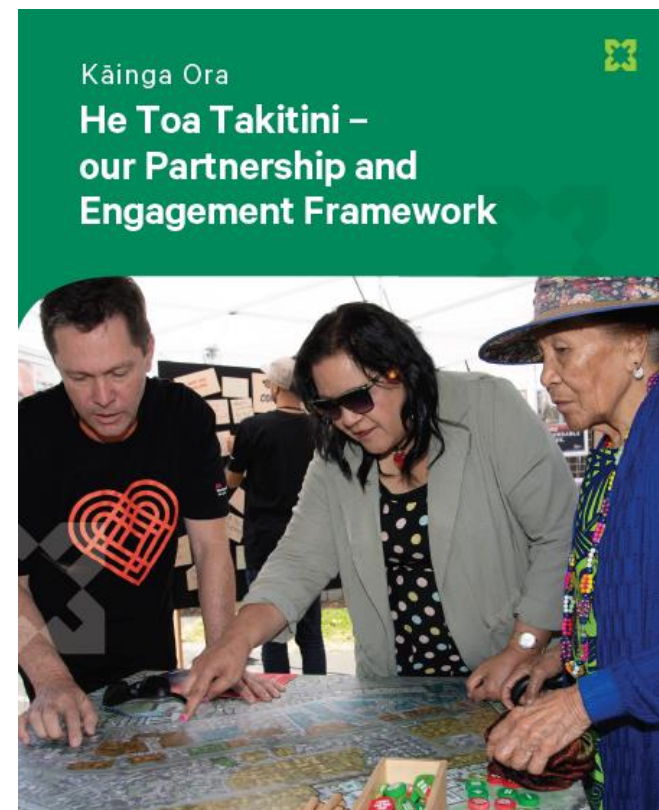
Building better

- Multiple building and architecture industry awards
- Built to 6 Homestar or better
- Multiproof designs to speed up consenting
- Rolling out targets for building relocation, re-use of materials and diversion from landfill
- Enabling off-site manufacture industry in New Zealand



He Toa Takitini - our Partnership and Engagement Framework

- Foundational, high level and aspirational document to guide how we deliver on our partnership and engagement operating principles
- Ensures our work with Māori, partners, stakeholders, communities and customers is guided by principles of best practice
- Is responsive to Te Tiriti o Waitangi, Kāinga Ora legislative environment, HUD MAIHI model, Te Arawhiti engagement approaches and to best practice partnership and engagement models
- Will set expectations for prospective partners and those Kāinga Ora engages with, with regard to how Kāinga Ora will operate, and what can be expected procedurally from Kāinga Ora
- We recognise we cannot achieve great outcomes for communities alone, and it is through partnerships with others and working towards shared outcomes that everyone benefits



Rotorua

- 1000 households on the MSD Housing Register
- 42% of the Housing Register identify as homeless
- 679 Kāinga Ora homes in Rotorua
- Significant shortage of 1 and 2 bedroom homes
- Rotorua is a priority housing area in Public Housing Plan – 263 new homes are in planning or construction

Homes under construction at Tania Crescent



Tania Crescent, Rotorua

Questions & discussion

