

Rotorua Lakes Council

Operations & Monitoring Committee

David Speirs – Director Regional Relationships

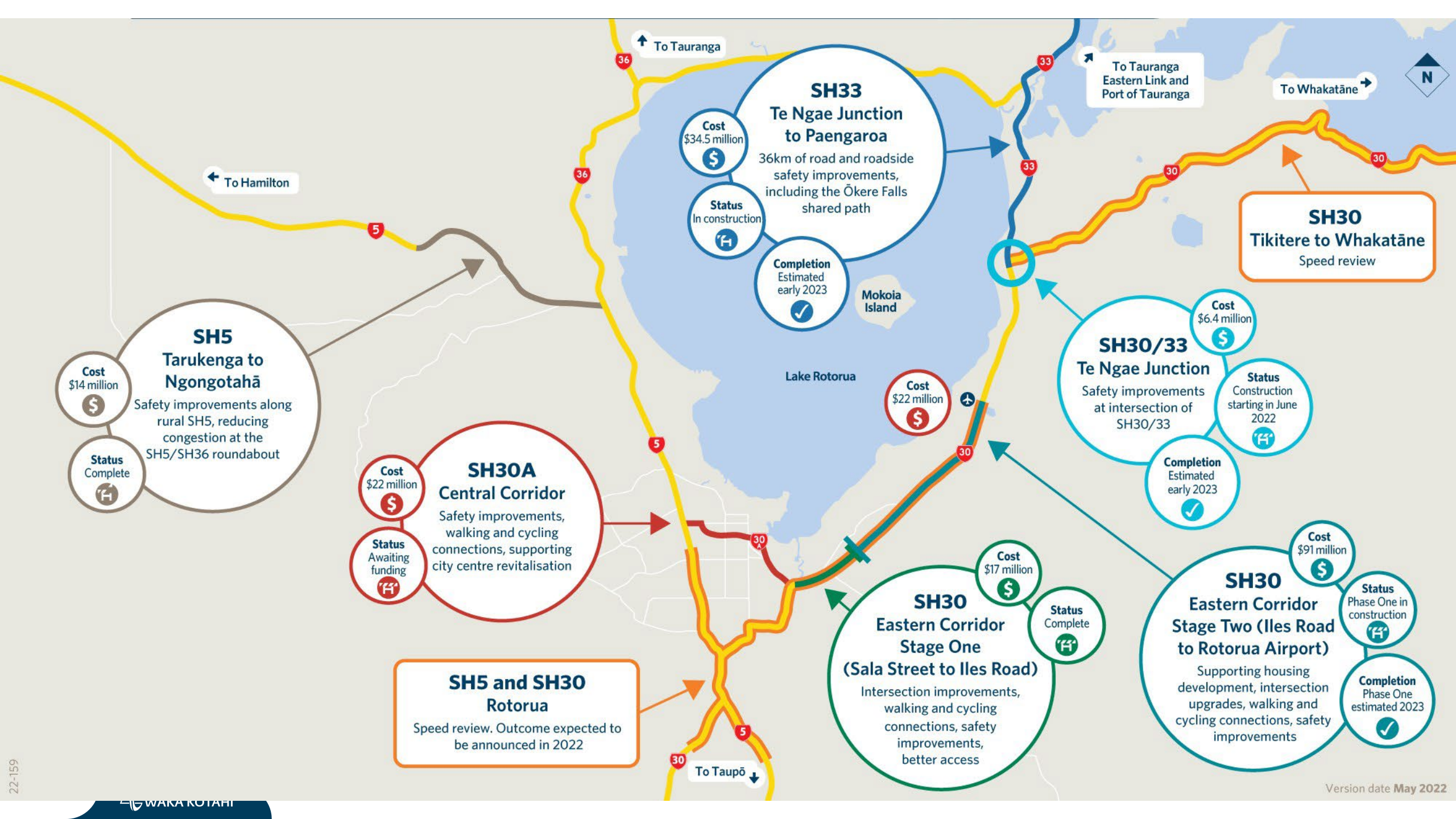
Jess Andrew – Regional Manager System Design

5 May 2022



What we'll cover today

- Project updates
 - SH30 Eastern Corridor Stage One
 - SH30 Eastern Corridor Stage Two
 - SH30A Central Corridor
 - SH5 Tirau to Tarukenga
 - SH5 Tarukenga to Ngongotahā
 - SH33 Te Ngae Junction to Paengaroa
 - SH30/33 Te Ngae Junction
 - Speed management
 - Maintenance
 - He tohu huarahi Māori



SH33
Te Ngae Junction to Paengaroa
 36km of road and roadside safety improvements, including the Ōkere Falls shared path
Cost \$34.5 million
Status In construction
Completion Estimated early 2023

SH30
Tikitere to Whakatāne
 Speed review

SH30/33
Te Ngae Junction
 Safety improvements at intersection of SH30/33
Cost \$6.4 million
Status Construction starting in June 2022
Completion Estimated early 2023

SH5
Tarukenga to Ngongotahā
 Safety improvements along rural SH5, reducing congestion at the SH5/SH36 roundabout
Cost \$14 million
Status Complete

SH30A
Central Corridor
 Safety improvements, walking and cycling connections, supporting city centre revitalisation
Cost \$22 million
Status Awaiting funding

SH30
Eastern Corridor Stage One (Sala Street to Iles Road)
 Intersection improvements, walking and cycling connections, safety improvements, better access
Cost \$17 million
Status Complete

SH30
Eastern Corridor Stage Two (Iles Road to Rotorua Airport)
 Supporting housing development, intersection upgrades, walking and cycling connections, safety improvements
Cost \$91 million
Status Phase One in construction
Completion Phase One estimated 2023

SH5 and SH30
Rotorua
 Speed review. Outcome expected to be announced in 2022

SH30 Eastern Corridor Stage One

Sala Street to Iles Road

- Complete and celebration held with Minister Wood end of February.







Te Māhanga (The Redwoods) 1.5km
Whakarere 2.5km
The Centre 2.3km



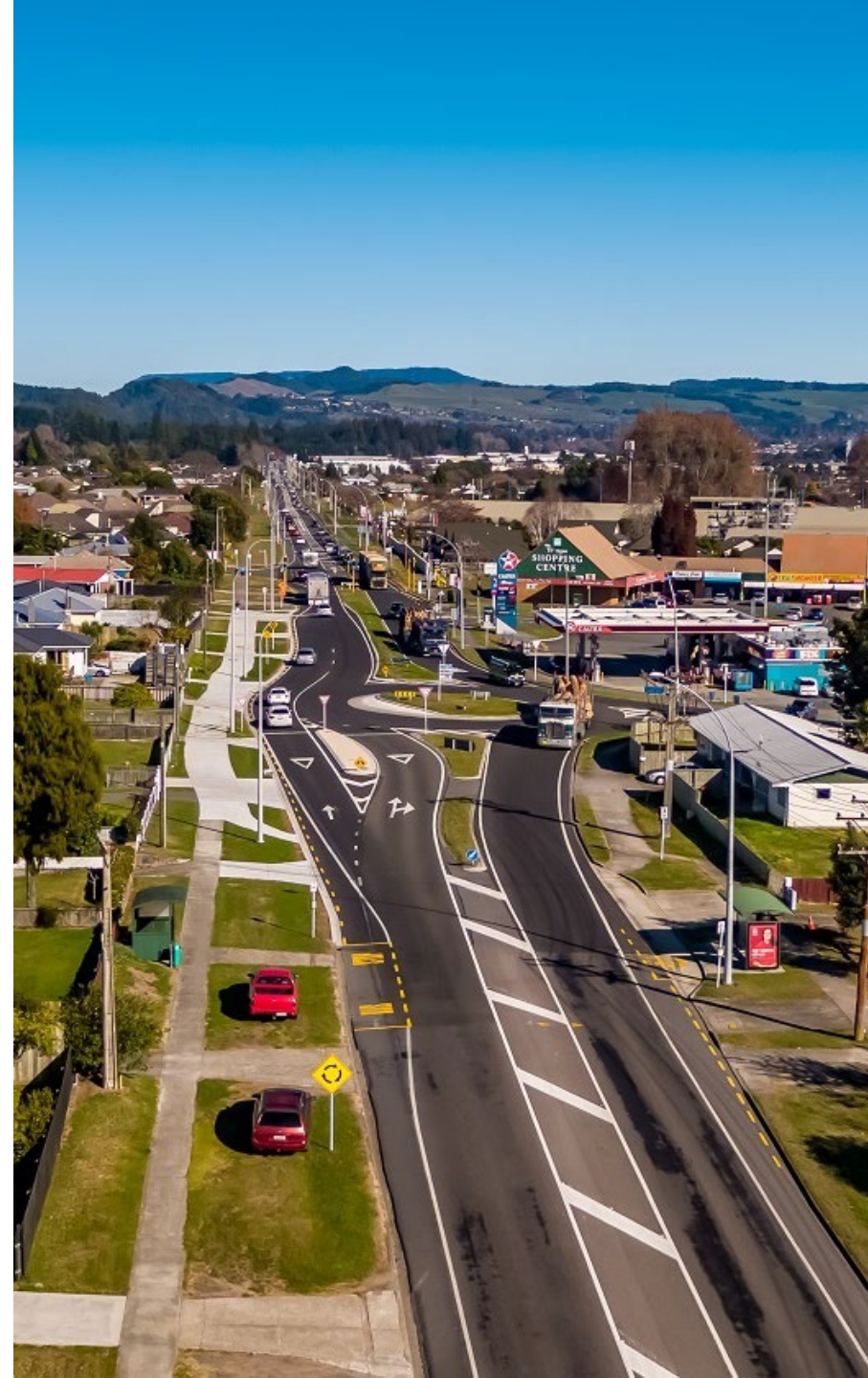




SH30 Eastern Corridor Stage Two

Phase One - Iles Road to Coulter Road

- Phase One is focused on supporting growth and development of Eastside Rotorua, specifically at the Wharenui Land Block.
- Safety platforms have been completed at three local road intersections
- Enabling works including utilities investigations, ground condition testing and condition assessment of existing services in the area complete.
- Detailed design for the last section between Ōwhata and Coulter roads is complete.



SH30 Eastern Corridor Stage Two

Phase One improvements

- Major works are expected to commence between Iles Road and Basley Road mid-May.
- Earthworks to start first in the berm and footpath to relocate services and underground existing overhead power cables, to enable road widening.
- The majority of this work is expected to take place in the road shoulder and will have minimal impact on traffic.
- Co-ordinating with other local road projects to manage/mitigate traffic impacts in the eastern areas.



SH30 Eastern Corridor Stage Two

Future phases Two and Three

- We are addressing safety and connectivity on this corridor, while accommodating for future growth and providing better travel choices.
- Phase One is funded and in construction.
- Phases Two and Three will be dictated by the growth and development of Rotorua. Both phases are currently unfunded.
- The Rotorua Airport / Eastgate intersection has been identified as part of Phase Two and would be triggered by development.



SH30A Central Corridor

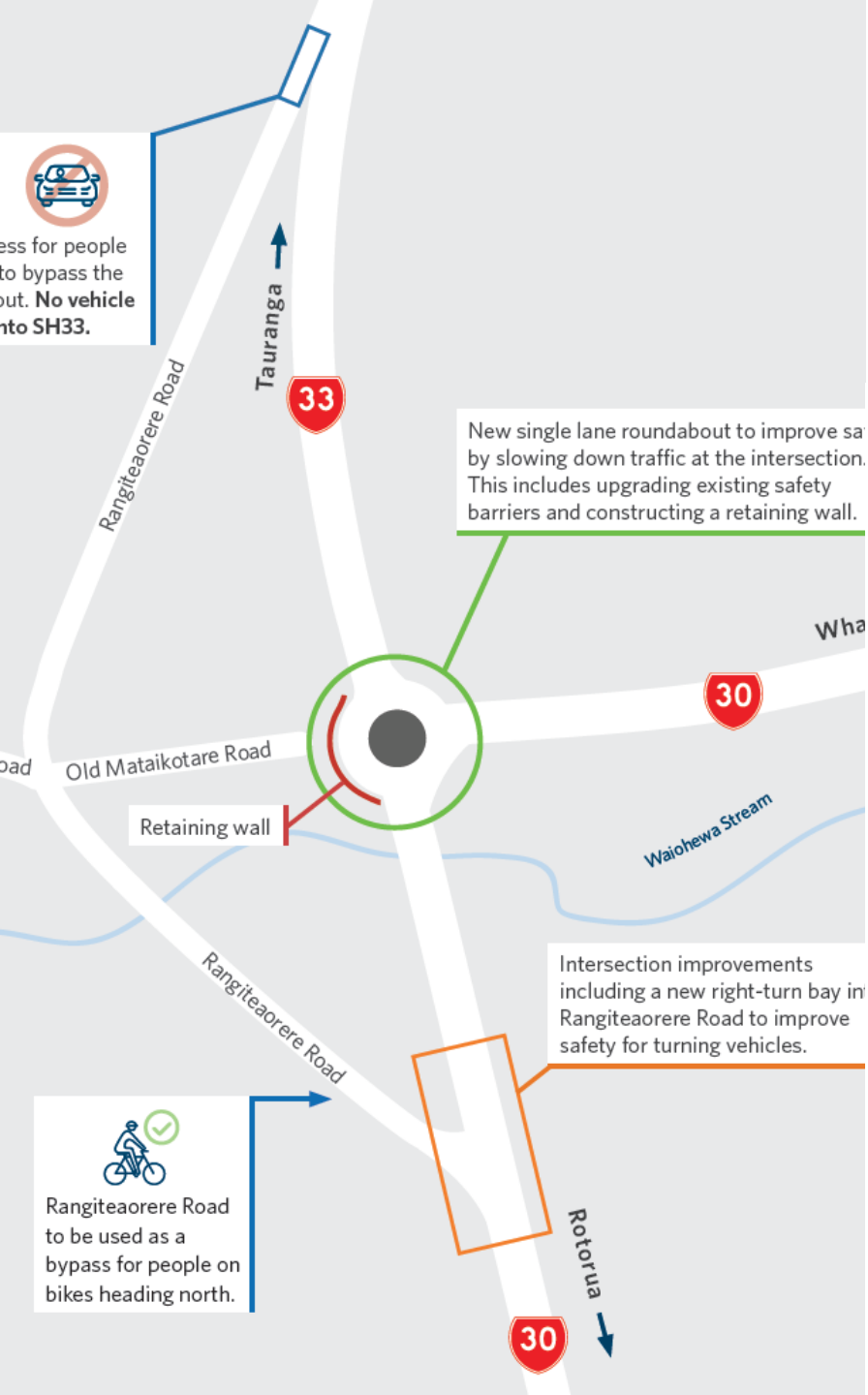
SH30A/Amohau Street (Old Taupō Road to Sala Street)

- The detailed design for the Central Corridor is complete.
- Improvements have been costed at approximately \$22 million.
- These provide a range of active mode and place making improvements that would ultimately support revocation of the State Highway status of this corridor.
- These works are currently not funded.
- We are working with Council on exploring funding opportunities for some or all of this programme.
- Regular reactive maintenance will continue as usual over the winter period, with any renewal activities for the 22/23 season to be confirmed as part of the wider programme.



SH30/33 Te Ngae Junction

Speed and Infrastructure Programme: Intersection safety improvements



- Project aims to make the intersection safer by constructing a new roundabout at the intersection.
- Funding secured for both detailed design and construction.
- May – funding announcement
- Mid 2022 – enabling works start
- Early 2023 - scheduled completion

SH33 Te Ngae Junction to Paengaroa

Speed and Infrastructure programme: Road and roadside safety improvements

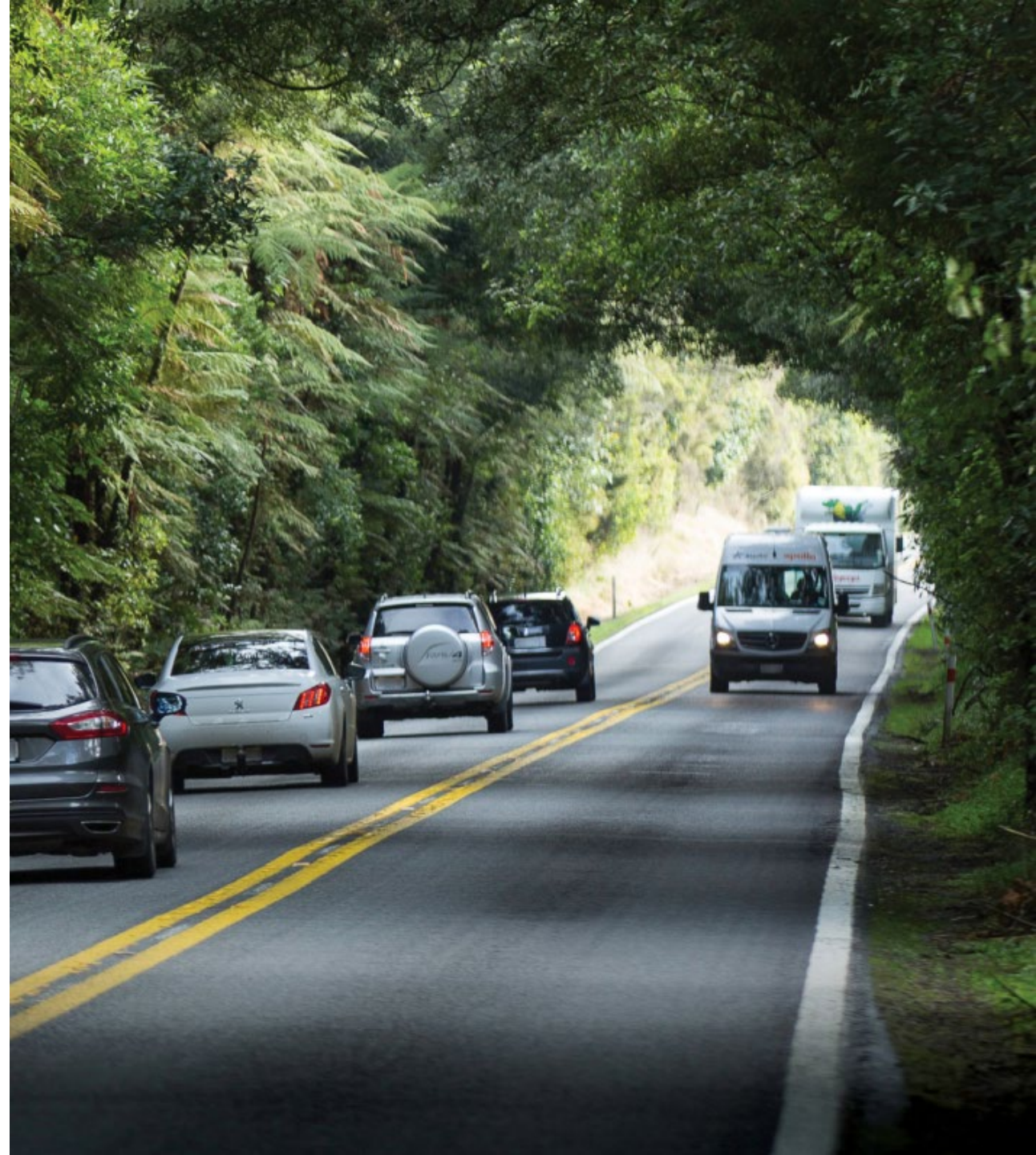
- Focus is on making this stretch of road safer by installing wide shoulders and centreline, and roadside safety barriers at high risk locations.
- Final stages in construction – at either side of Pareteiro Sun Valley Curves and the new shared path at Ōkere Falls.
- The 34km project is now expected to be completed early 2023, due to COVID-19 and supply issues.
- Ōkere Falls to Hamurana Road shared path will be completed May. Funding received to extend path to Mourea Bridge. Shared path completion and blessing June 2022.



SH5 Tirau to Tarukenga

Speed and Infrastructure Programme: Road and roadside safety improvements feasibility study

- Completed feasibility study. Internal review underway.
- It recommends a number of improvements to make this corridor safer, including a flexible median safety barrier, roundabouts at the SH5/SH28 intersections, and turning bays so vehicles can manoeuvre safely.
- A funding decision is expected mid-2022. If successful, community engagement will follow.



SH5 Tarukenga to SH5/SH36 Ngongotahā

NZUP and Speed and Infrastructure programme:
Roundabout upgrade and safety improvements

- Celebration held with Minister Wood end of February.
- Upgrade of the roundabout, road widening along SH5 and all safety improvements are complete.









Speed Management

Speed and Infrastructure Programme – Safer speed limits

SH5/SH30 Urban Rotorua

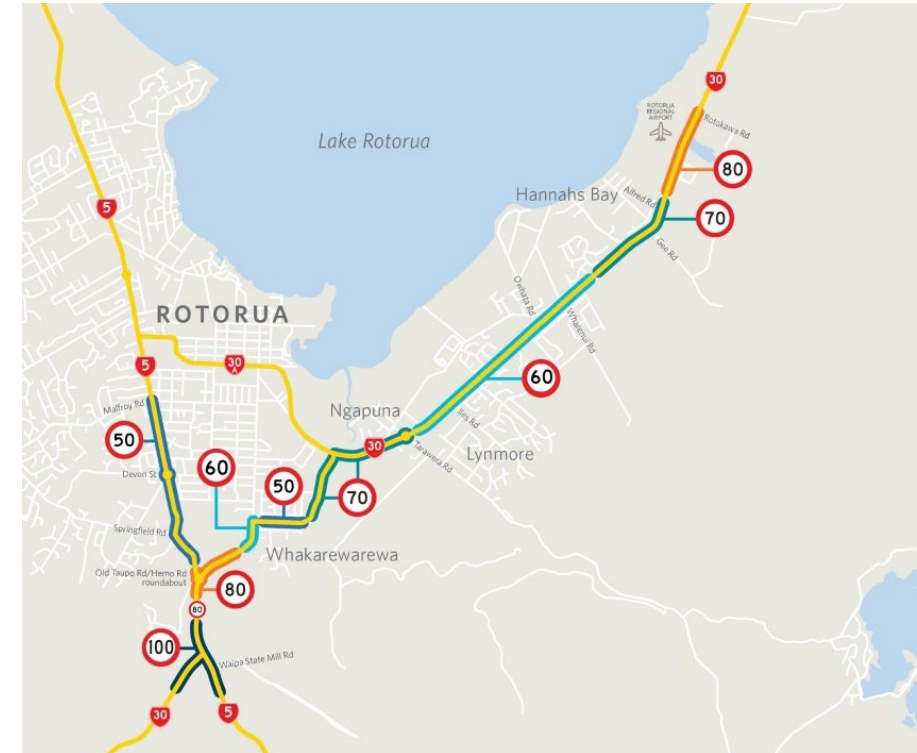
- Consultation completed April 2021. Outcome announcement and implementation by mid-2022.

SH30 Tikitere to Whakatāne

- Completed consultation. Over 1400 submissions currently being analysed. Further steps need to be completed before an announcement on the outcome can be made.

SH36 Tauriko to Ngongotahā

- Identified as high risk and in the speed management programme. Technical assessment due 2022.



Proposed speed limits for SH5 and SH30

Maintenance

Keeping people moving every day

- 2021/22 renewal season across the Eastern Bay of Plenty has now finished
- Highlights include the concentrated effort on SH36, where road closures were used to increase efficiency and crew safety, and resealing of SH30A Amohau Street
- 2022/23 programme is currently being finalised; our proposal is to complete over 30km of chip sealing and over 4km of asphalt resurfacing within the Rotorua district, along with re-building several sections of road as well.



He tohu huarahi Māori

Māori bilingual traffic signs programme update

- Kura School signs are now required when:
 - existing signs need to be replaced, or
 - new projects are initiated.
- We are partnering with Te Mātāwai and Local Government to enable the use of bilingual traffic signs.
- An event is planned for late-May to unveil the signs at a Rotorua school.
- Waka Kotahi, alongside Te Mātāwai, will be releasing a selection of other traffic signs for public consultation later this year.
- Signs are introduced when new signs are needed or when existing signs need to be replaced
- There are some te reo Māori only signs that are being used now for example 'Marae' signs.



Hei konā mai

Goodbye for now