

Inner City Revitalisation plan development update



Direction is set by key work completed to date

Vision 2030 Strategy (2013)



Inner city revitalization strategy (2015)



RED sector groups (2020)

Plan	Activate	Invest
<ul style="list-style-type: none"> • Vision for vibrancy / exec summary • Cultural design - Ngati Whakaue involvement • Develop design guidelines • Correct green corridor • Policy changes that, redefine CBD core and reduces spread, increases density and encourages mixed use developments, creates new precincts 	<ul style="list-style-type: none"> • Takiwa champions (retail support activation strategies and CBD management partnership) • Eight beating hearts (provide significant attractions in CBD) • Amplify existing activity (comms strategy) • Create distinct precincts • Increase paving / landscape width 	<ul style="list-style-type: none"> • Court • Encourage inner city living / residential development (feasibility study) • Incentives and policy • Limit the size of the CBD • Select a panel to oversee design guidelines • Collate current data for the cbd including occupancy, value, cost, capacity, transport, activity, retail spend, population and safety

Inner city transport network review (2020)



DCA stock take (2020/21)



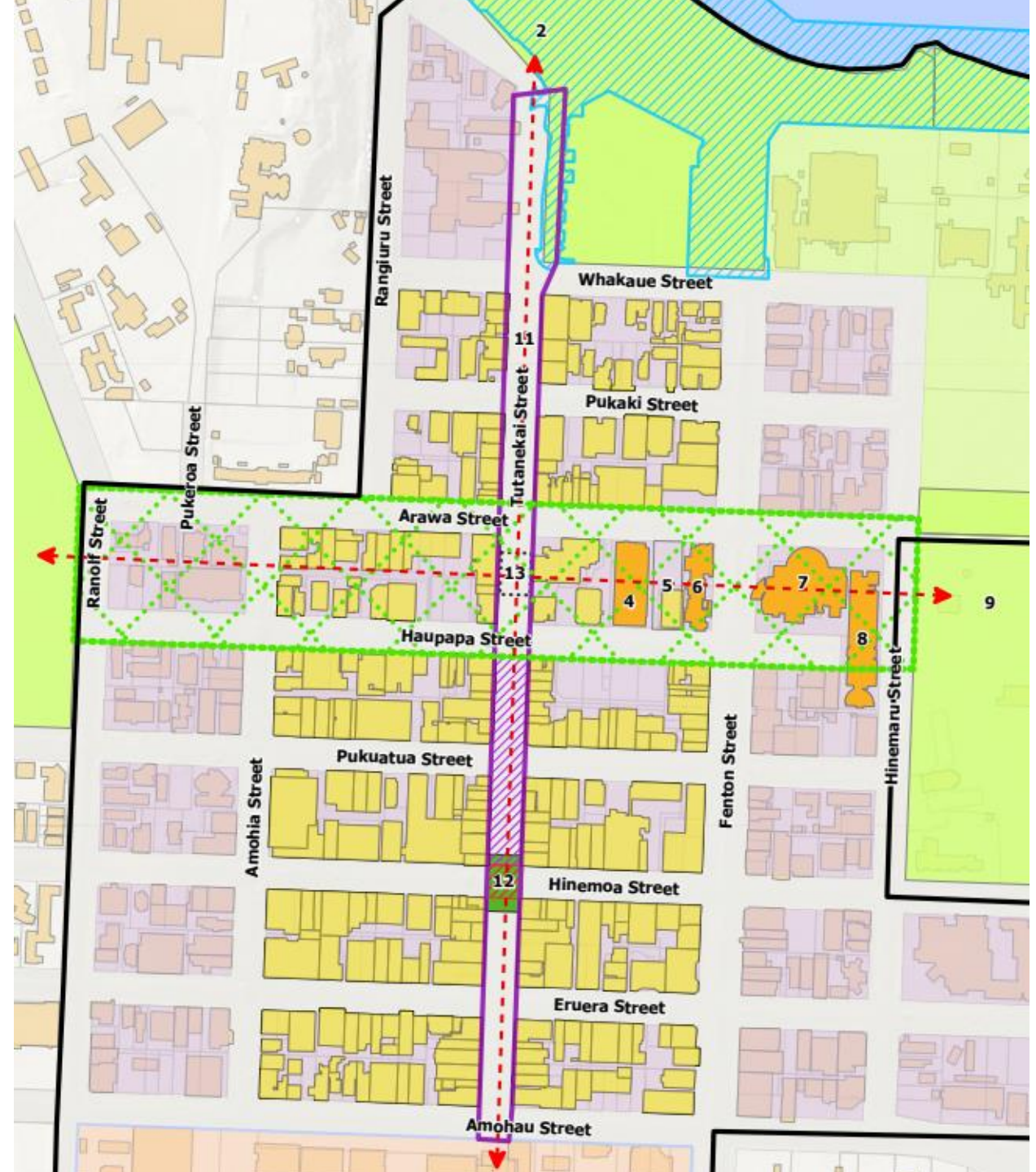
Spatial representation of focus

Conclusions:

- Consistency in objectives in previous plans
- Inconsistent delivery of actions

Key recommendations for next steps:

- Delivery of a clear strategy & vision
- Delivery plan with short-term actions
- Identification of key moves/ long-term projects to enable change.
- Focused & coordinated approach – Return of the main/ high street concept - Tūtānekai Street



Current action:

Shared DCA stocktake and spatial strategic framework with –

- Mana Whenua entities
- Te Tatau Board
- Stakeholder business groups (cbd / takiwa)

Current steps:

- Working with Mana Whenua on 'cultural foundation' development process
- Consider example incentives policies (begin discussions – through Chamber)