

**Infrastructure and Environment Committee Meeting Minutes 1 November 2023****20027120**

## Minutes

**Infrastructure and Environment Committee Meeting  
held Wednesday 1 November 2023 at 9.30am  
Council Chamber, Rotorua Lakes Council**

- MEMBERS PRESENT:** Cr Barker (Chair)  
Cr Wang (Deputy Chair), Mayor Tapsell, Cr Kai Fong, Cr Kereopa,  
Cr Brown, Cr Lee, Cr O'Brien, Cr Waru
- MEMBERS PRESENT  
VIA AUDIO VISUAL:** Cr Paterson and Cr Maxwell
- IN ATTENDANCE:** Cr Kevin Winters, Cr Te Taru White, Cr Lyall Thurston, Namouta Poutasi  
(General Manager- Strategy and Science), Penny Doorman (Programme  
Leader –Geothermal), and Freya Camburn (Senior Policy Analyst) - Bay of  
Plenty Regional Council.
- STAFF PRESENT:** G Rangī, Interim Chief Executive;  
T Collé, Group Manager, Corporate Services;  
J.P Gaston, Group Manager, Strategy & Community;  
S Michael, Group Manager, Infrastructure & Environmental Solutions;  
O Hopkins, Executive Director, Corporate Planning and Governance;  
S Main, Communications Advisor;  
C Goodwin, Manager, Waste and Climate Change;  
M Cooper, Waste Minimisation Officer;  
D Cossar, Governance & Democracy Manager;  
N Michael, Executive of Communications, Mayor's Office;  
G Konara, Governance & Democracy Co-ordinator.

The meeting opened at 9.31am.

The Chair welcomed elected members, media, staff and members of the public.

**1 KARAKIA WHAKAPUAKI  
OPENING KARAKIA**

Cr Paterson opened the meeting with a Karakia.

**2 NGĀ WHAKAPĀHA  
APOLOGIES**

None

### **3 WHAKAPUAKITANGA WHAIPĀNGA DECLARATIONS OF INTEREST**

None

### **4 NGĀ TAKE WHAWHATI TATA KĀORE I TE RĀRANGI TAKE URGENT ITEMS NOT ON THE AGENDA**

None

### **5 TE WHAKAŪ I NGĀ MENETI CONFIRMATION OF MINUTES**

#### **5.1 MINUTES OF INFRASTRUCTURE AND ENVIRONMENT COMMITTEE MEETING HELD 4 OCTOBER 2023**

19995815

#### **Resolved**

- 1. That the minutes of the Infrastructure and Environment Committee meeting held 4 October 2023 be confirmed as a true and correct record.**

Moved: Mayor Tapsell

Seconded: Cr Kai Fong

**CARRIED**

Attendance: - Cr Waru joined the meeting at 9.36am.

### **6. NGĀ TĀPAETANGA PRESENTATIONS**

#### **6.1 GEOTHERMAL MANAGEMENT PLAN - BAY OF PLENTY REGIONAL COUNCIL**

Cr Kevin Winters, Cr Te Taru White, Cr Lyall Thurston, Namouta Poutasi (General Manager- Strategy and Science), Penny Doorman (Programme Leader –Geothermal), and Freya Camburn (Senior Policy Analyst) spoke to a presentation titled “Draft Geothermal System Management Plan” (Attachment 1).

The meeting adjourned at 10.37am

Attendance: - Cr Maxwell left the meeting at 10.37am.

The meeting resumed at 10.55am.

### **7. PŪRONGO KAIMAHI STAFF REPORTS**

#### **7.1 SPEED MANAGEMENT PLANNING 2023 - DELIBERATIONS REPORT (DECISION REQUIRED)**

20015314

**Resolved**

- 1. That the report titled “Speed Management Planning 2023 - Deliberations Report” be received.**

Moved: Cr Lee

Seconded: Cr Kai Fong

**CARRIED**

Stavros Michael and Darryl Robson overviewed the report.

Attendance: - Mayor Tapsell re-joined the meeting at 11.08am.

The Chair, Cr Barker signalled to move a motion:-

- 2. That the committee note the considerable community feedback arising from the consultation process and recommends the following approach:**
  - **Speed limits are reduced to 30km around urban and rural schools as recommended for setting variable speed limits, taking into consideration main entrances to the school, and advice from each school regarding their use of these entrances.**
  - **Any speed limit changes in the CBD be deferred until relevant decision-making discussions have been finalised regarding the pending Revitalisation Plan for the Inner City.**
  - **The speed limits in the remaining District remain as they are pending further consideration of the new Government’s transport policies.**
- 3. That the committee authorises officers to prepare a final draft Territorial Authority Speed Management Plan and bring it back to the Committee for final approval, before it is submitted to the Director of Land Transport for certification in March 2024.**

Moved: Cr Barker

Seconded: Cr Kai Fong

**CARRIED**

Cr Lee signalled to move a procedural motion but did not meet the requirements specified in the standing orders.

## 7.2 PROGRESS REPORT - INFRASTRUCTURE AND ENVIRONMENTAL SOLUTIONS

19980581

**Resolved**

- 1. That the report titled “Progress Report - Infrastructure and Environmental Solutions” be received.**

Moved: Cr Wang  
Seconded: Mayor Tapsell  
**CARRIED**

Stavros Michael overviewed the report.

Attendance: - Cr Waru left the meeting at 11.58am.

Stavros Michael, Craig Goodwin and Meghan Cooper spoke to a presentation titled "Waste Management Services" (Attachment 2).

Attendance: - Cr Waru re-joined the meeting at 12.40pm.

**Action Point**

- **Cr O'Brien requested a report or a brief at the next meeting on comprehensive storm water resource consents.**

7.3 CONFIDENTIAL ITEMS TO BE RELEASED

20003308

**Resolved**

1. **That the report titled "Confidential items to be released" be received.**

Moved: Cr Waru  
Seconded: Cr Wang  
**CARRIED**

Oonagh Hopkins Overviewed the report.

**8 HE WHAKATAUNGA KIA HOKI ATU TE ARONGA O TE HUI HAI HUI TŪMATAWHĀITI  
RESOLUTION TO MOVE INTO PUBLIC EXCLUDED**

The Chair advised that there were two items for consideration in public excluded session:

1. Confidential Minutes of the Committee Meeting held 4 October 2023
2. Crown Infrastructure Partners Stormwater Conveyance Interim Loan Approval.

However, after discussion with Interim Chief Executive and Group Managers, under Standing Order 9.9, agenda item 11.1 – report on Crown Infrastructure Partners Stormwater Conveyance Interim Loan Approval has been deferred until after further discussion in the upcoming Long-Term Plan workshops around Council's priorities in this area.

Therefore, the Chair advised that the only matter in the public excluded session is to adopt the confidential minutes of the previous meeting and if there are no corrections or discussion required there is no requirement to move into Public Excluded.

**9 TE WHAKAŪ I NGĀ MENETI (NGĀ TAKE MATATAPU)  
CONFIRMATION OF MINUTES (CONFIDENTIAL ITEMS)**

**9.1 CONFIDENTIAL MINUTES OF INFRASTRUCTURE AND ENVIRONMENT COMMITTEE MEETING HELD 4  
OCTOBER 2023**

19995820

**Resolved:**

- 1. That the confidential minutes of the Infrastructure and Environment Committee Meeting held 4 October 2023 be confirmed as a true and correct record.**

Moved: Cr Waru

Seconded: Mayor Tapsell

**CARRIED**

**10 TE KARAKIA WHAKAMUTUNGA  
CLOSING KARAKIA**

Cr Paterson closed the meeting with a Karakia.

---

The meeting closed at 12.45pm.

---

Confirmed at Infrastructure and Environment Committee meeting on 12 December 2023



.....  
Chair

**Note:-Rotorua Lakes Council is the operating name of Rotorua District Council**

**Attachment 1:- Draft Geothermal System Management Plan**

## What we will cover

- What is the Rotorua Geothermal System?
- What is a System Management Plan (SMP)?
- How was the Draft SMP developed?
- What are the key drivers to manage the system?
- What key changes are we proposing?
- What are the implications?
- What is the process from here?

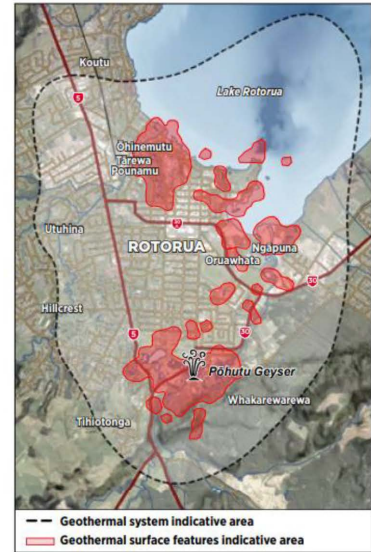
For more detail visit [www.boprc.govt.nz](http://www.boprc.govt.nz) or come to our **technical presentation**



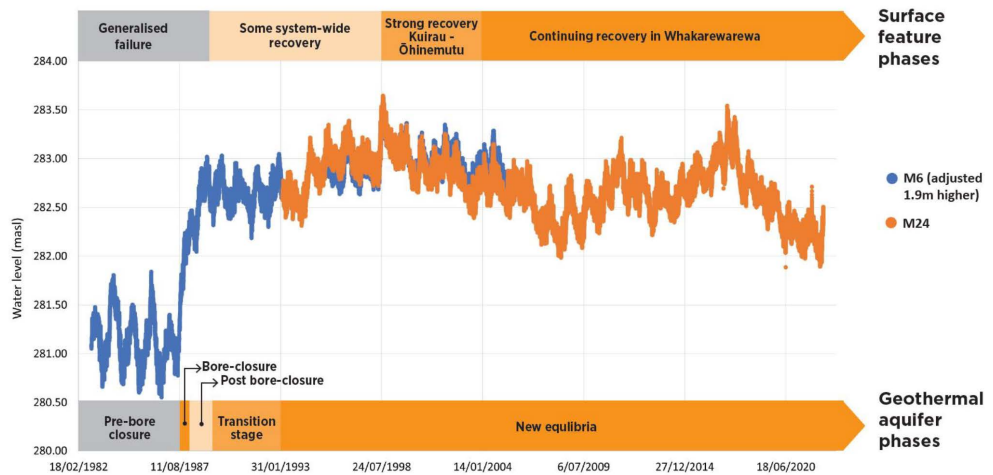
# Ngā Wai Ariki o Rotorua

- In Taupō Volcanic Zone
- One of last remaining geyser fields
- Over 1,800 features or ngāwhā
- Part of everyday life for haukāinga
- 130 consented takes
- Space and water heating, and bathing
- 90% reinjection

*Managed to protect surface features*



# Health of the geothermal system





## What is the System Management Plan?

- BOPRC's geothermal functions under the RMA
- A requirement of the Regional Policy Statement
- Scope limited to BOPRC's geothermal functions
- Only covers the Rotorua Geothermal System
- Sets direction for system wide management
- Does not direct the District Plan
- Is not a regional plan, but signals intent for upcoming regional plan change



## Development of the SMP

- Multiple hui-a-iwi
- Targeted hui with iwi entities
- Ahi Kā Roa Rōpū - hau kainga working group
- Issues and options hui and workshops – (*RLC participation*)
- Council workshops/Kōmiti Māori
- Rotorua Geothermal Liaison Group (*RLC participation*)
- Targeted input from industry





## Building our evidence base

- Long term monitoring of surface features and geothermal aquifer
- Heat flow surveys, thermal infra-red, chemistry
- Geothermal reservoir modelling to predict future changes
- Ahi Kā Roa Rōpū perspectives: He Kohikohinga
- Best practice guidelines on geothermal discharges, geothermal production systems, efficiency, well maintenance (*Rotorua Lakes Council input*)

[For more visit www.boprc.govt.nz](http://www.boprc.govt.nz) (technical reports, guidelines and videos)



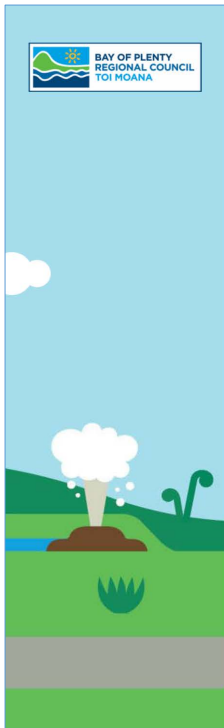
## Key findings

- The system has recovered, is still changing and may recover more
- Healthy surface features need a **hot** and **full** aquifer
- Increasing geothermal water takes and heat only takes could affect system health
- We won't get much warning if we get it wrong
- Some features and areas are more sensitive than others
- Our 'sustainable operating space' is small
- Access is weighted towards commercial use
- Our Treaty partnership must underpin management



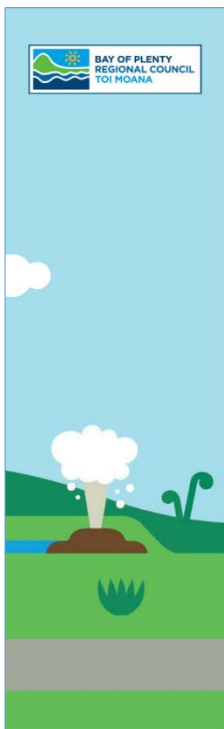
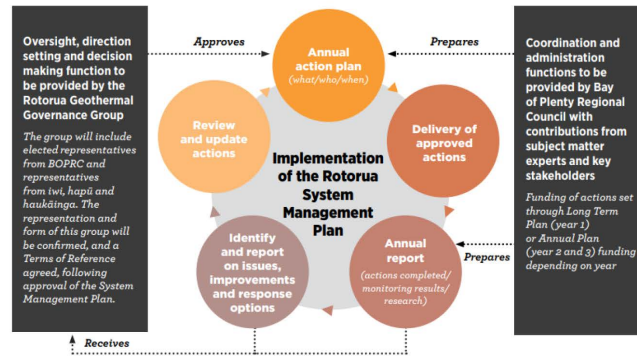
**KEY CHANGES PROPOSED**

Approach	Example of new approach
Knowledge based decisions	Providing for Mātauranga Māori
Protecting aquifer health	Keeping use at, or close to current levels (water and heat)
Sensitive management areas	Sensitive management areas, 'deep system'
Values based allocation	Future prioritisation of use (customary, communal, wellness)
Greater efficiency	More reinjection, down hole heat exchangers, metering
Treaty Partnership	Tangata whenua oversight of implementation of SMP



## How will the SMP be used?

- Considered in consent applications when approved
- Will not override the Operative Regional Plan
- Formal regional plan change still needed



## What does the SMP mean now?

- Sustainable customary practice is unaffected
- Existing consented takes continue
- More scrutiny around efficiency and monitoring on consent renewal
- More scrutiny in Sensitive Management Areas on consent renewal (e.g. push to DHX where possible)
- Careful assessment of effects of new or increased takes - new large takes very unlikely

**Realistic expectations and consistent messaging**



## Next steps

- Technical presentation 20 November
- **Feedback closes on 8 December**
- Opportunity for oral feedback in February 2024
- Consideration by joint panel
- Revised SMP adopted – March 2024
- Early consultation on Draft Regional Plan Change
- Draft Regional Plan Change - March/April 2024
- Proposed Regional Plan Change
- Submissions on Proposed Regional Plan Change



## Some things to think about

- How do we ensure consistent messaging to the community about geothermal use?
- How do we strengthen our existing working relationships?
- What are your thoughts on prioritisation of use?
- Could sensitive management areas will be useful for spatial planning and district planning processes?
- See other questions in the Draft SMP


**Attachment 2:- Waste Management Services**

# WASTE MANAGEMENT SERVICES

## I & E COMMITTEE NOV 2023



ROTORUA  
LAKES COUNCIL



## STRATEGIC OUTCOMES

- Guided by Environmental Plan goals
- Aligned with national policy statements
- **RLC Waste Management and Minimisation Plan 2022-2028**
  - Protection of public health
  - Support Environmental Plan/Te Āo Māori
  - Assist circular economy

Community initiated clean-up – Rotorua residents

# CURRENT STATUTORY REQUIREMENTS

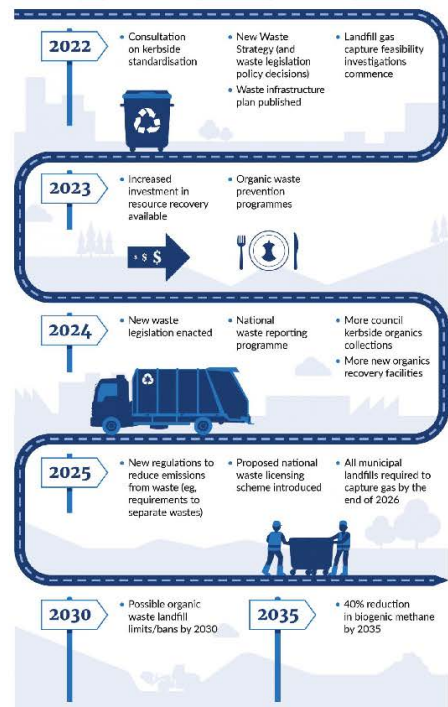
## Waste Minimisation Act 2008

- A territorial authority must:
  - Promote effective and efficient waste management and minimisation within its district
  - Undertake on-going assessment of waste generation within its District
  - Adopt a waste management and minimisation plan and implement actions
- A TA may make appropriate bylaws consistent with its WMMP objectives
- A TA may spend the levy money it receives under section 31 (FY 2022/23 = \$773,233 - FY 2023/24 = \$927,879 )
  - (a) on matters to promote or achieve targeted waste minimisation; and
  - (b) in accordance with its waste management and minimisation plan objectives.



## GOVERNMENT WASTE MANAGEMENT PATHWAY TO 2035 - CHALLENGES

- 2022**
  - Consultation on kerbside standardisation
  - New Waste Strategy (and waste legislation policy decisions)
  - Waste infrastructure plan published
  - Landfill gas capture feasibility investigations commence
- 2023**
  - Increased investment in resource recovery available
  - Organic waste reduction programmes
- 2024**
  - New waste legislation enacted
  - National waste reporting programme required
  - More council kerbside organics collections required
  - More new organics recovery facilities to be created
- 2025**
  - New regulations to reduce emissions from waste (e.g. requirements to separate wastes)
  - Proposed national waste licensing scheme to be introduced
  - All municipal landfills required to capture gas by the end of 2026
- 2030**
  - Possible organic waste landfill limits/bans by 2030
- 2035**
  - 40% reduction in biogenic methane by 2035



# PROPOSED NEW LEGISLATION

## to replace the WM Act and the Litter Act

**Waste Legislation Cabinet Paper** (the intention for the bill to be introduced by early 2024 and enacted by 2025) ??  
**Anticipated;**

**Seeking Cabinet decisions to:**

- Align the overarching purpose and principles of the new legislation with the purpose and principles of the new waste strategy
- Name the new legislation the “Responsibility for Reducing Waste Act”
- Specify central government’s main responsibilities in relation to the national direction, stewardship and investment in waste and resource recovery
- Appoint the Environmental Protection Authority as the central government waste regulator
- Outline minimum obligations for local government to improve clarity of their legislated role and responsibility
- Strengthen the legislative weighting of the proposed strategic planning framework to support delivery of the new waste strategy goals and priorities
- Align local government waste planning with the national strategic planning framework
- Set waste management reporting requirements for central and local government.



# PRODUCTS AND MATERIALS

- Regulating products and materials to promote circular economy
  - Product bans on a case-by-case basis
  - Landfill bans on some products/mandatory recycling e.g. e-waste
  - Information on environmental performance e.g. prescribed labelling requirements on products
  - Extended producer responsibility e.g. voluntary and regulated product stewardship schemes



## WASTE TRACKING – COMPLIANCE COSTS

- A national licensing scheme for the waste and resource recovery sector
  - Wide ranging coverage from transport to disposal operators
- National standards to regulate disposal and resource recovery
- Tracking systems for waste
  - Chain of custody
- Controls for the import and export of waste
  - Alignment with international agreements



## WASTE LEVY

### Collection, administration, data, and general compliance regime

- Levy proposals (collection, administration, and monitoring)
  - Levy should be applied to any facility for the final disposal of waste
  - Environmental Protection Agency to become the levy administrator and regulator
- Improved record-keeping and reporting provisions - **(new regulations as of 1 July 2024)**
  - National waste data framework
  - Applied to all operators/authorities
  - Territorial authorities will need to report on their levy spending, as well as their adopted waste minimisation activities and their outcomes trends.
- Compliance regime – a modern and effective framework to support a circular economy
  - Widened enforcement powers for litter control and illegal dumping





## REGIONAL MATTERS (HIGH LEVEL)

- All BOP District Council Waste Managers communicate regularly
- The regional group are working collaboratively on regional infrastructure analysis (Validation of Business Case Depended)
  - Initial study funded by Tauranga City (RLC keep a watching brief)
- No regional landfill within BOP
- Regional issues expected to be highlighted by the infrastructure analysis:
  - Recoverable construction and demolition waste (CnD waste) going to landfill
  - All councils moving to organic waste collections, no regional facility available in BOP – processed into soil conditioner, viable replacement for most refined chemical fertilisers
  - Limited availability of land for new waste recovery opportunities (facilities)



## RLC ACTIONS TO-DATE (2016-23)

- Landfill unviable/high risks closed and capped (2018)
- Biosolids from SS diverted to fertilizer from 2018/19 (10,000 t p.a.)
- Kerbside waste collection introduced 2016/17 (bag system abandoned)
- Kerbside household recycling collection introduced 2016/17
- Community drop – off stations improved and maintained

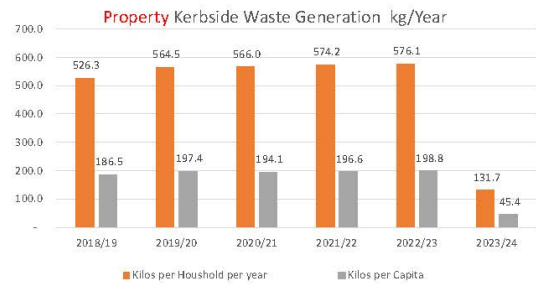


# GENERAL MUNICIPAL WASTE IN ROTORUA

Municipal Waste Management and Minimisation Trends (Rounded)					
Year	Property Waste p.a.	Recovered p.a.	Total Property Waste	Total Municipal incl. Biosolids (10,000t)	Municipal Waste Diversion Rate
2015/16	15,000	3,000	18,000	28,000 *	10%
2019/20	17,000	5,500	22,500	32,500 **	47%
2021/22	17,000	5,200	22,200	32,200	47%
2023/24	16,500	5,000	21,500	31,500	47%
Proj					
2025/26	17,000	13,000 (incl FOGO)	22,000	32,000	71% (Target)
Proj					

Notes: 2015/16 Prior to Kerb side system and open landfill. 2019/20 Kerbside collections and landfill capping biosolids diversion

- Commercial enterprise involved in waste management
  - Council handles approx. 50% of total waste in Rotorua (biosolids, kerbside collection, community drop locations, landfill RTS) – FOGO underway (diversion to over 70%)
- WMMP to be reviewed in 2026 set next goals

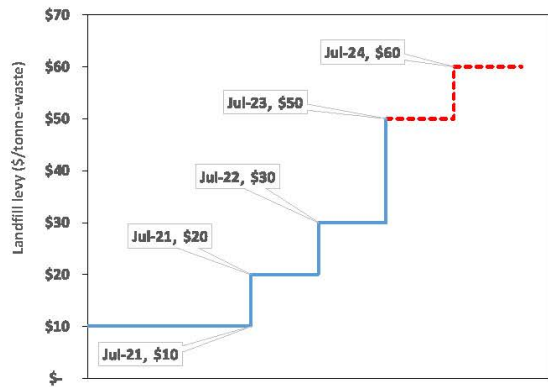
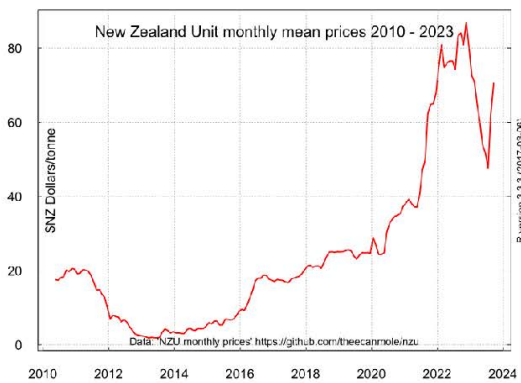


# INCREASING COSTS - ETS AND THE WASTE LEVY - LANDFILLING DIVERSION

Unprecedented rise in landfilling costs due to landfill levy and emissions trading scheme (ETS)

Landfill costs expected to increase by a million dollars per year by 2024

COMPRISE OVER 60% OF LANDFILLING COSTS AND INCREASING



## ETS SETTINGS

- Starting from the December 2023 auction, the number of emissions units available at auction will be reduced
- Auction price floor settings will rise from the current level of \$33.06 to \$60 in December 2023. It will be \$64 in 2024
- A two-tier cost containment reserve (CCR) trigger price will be introduced. In December 2023, the CCR trigger price will be \$173 rather than current trigger price of \$82
- In 2024, the total CCR volume will decrease from 8 million NZUs under the current settings to 7.7 million NZUs, and will continue decreasing in the following years.

CONTRACT	LAST/FIX
NZUs - April 2024	70.92
NZUs - April 2025	75.88
NZUs - April 2026	81.20
NZUs - April 2027	86.89
NZUs - April 2028	92.99

## MUNICIPAL WASTE SERVICES COST

ELEMENT	COST	NOTES/COMMENT
Services and Operations	\$10.2 m	Landfilling/taxes/GCPI and recycling market prices pressures
Biosolids (SS)	\$1.2 m	Part of waste water services – regulatory pressures
Personnel	\$0.3 m	Services management and behaviour influencing
Indirect (Depreciation/Interest/OHs)	\$1.0 m	
<b>TOTAL (rounded)</b>	<b>\$12.7 m</b>	
Funded by		Targeted rate and general rate

# FOGO – PROPOSED START 01 JULY 2025

Waste stream	Current	Proposed
Glass (blue)	Fortnightly	Fortnightly
Recycling (Yellow)	Fortnightly	Fortnightly
Rubbish (Red)	<b>Weekly</b>	<b>Fortnightly</b>
FOGO (Green)	-	<b>Weekly</b>

**Fortnightly rubbish collection**

- to reduce collection costs
- to support FOGO diversion

**FOGO Bin**



**Multiple bin options**  
(at extra costs) to suit different households/requirements

**Rubbish Bin**



Options for **bigger or multiple rubbish bins** at extra costs

## CHALLENGES IDENTIFIED, ACTIONS UNDERWAY

- Relocation of the Recycling Centre – consolidated Resource Recovery Park needed, community focal point for waste minimisation and sustainability
  - Re-use shop (\$200+K revenue) 50% returned to Council
  - Kerbside recycling pre-sort and consolidation
  - Glass bunkers
  - Public drop off facilities
  - Option for refuse drop off and improved diversion
- Event waste management planning
  - Planning template and resources in development for event organisers before consenting



# LITTER AND ILLEGAL DUMPING

- Litter reduction campaigns
  - 'Pink bag' campaign – community clean-up support
  - 'Take it home' campaign – natural environments
  - Litterbin optimisation – placing where they're needed most
- Illegal dumping - \$187k (2022-23)
  - Following up on people identified as connected to rubbish found – behavior influencing
  - Patterned behavior – use of cameras to increase
  - Recovering clean-up costs from offenders
  - Issuing infringements where possible



# WASTE MINIMISATION BEHAVIOUR ACTIVITIES

## Recent and current:

- Home composting – workshops and resource access
- Textiles – impact information, re-purposing workshops
- Litter – resources and support to community clean-ups
- Recycling – school sessions on request, videos with kids
- Pop-ups – on request, activation events
- RLC Civic Centre – reducing our waste too



Ngongotatā Primary

## WASTE MINIMISATION BEHAVIOUR ACTIVITIES

### In the pipelines...

- Repair Café – planning two pilot events to encourage community interest
- House of Science toolkit sponsorship – 'A Load of Rubbish'
- Reusables campaigns – cups, nappies
- Event waste – resources for event organisers