

## 4.6 Rotomahana

The following information sheets relate to the Lake Rotomahana *watershed catchment*.

ROTOMAHANA



## Rotomahana A

### VIEWER LOCATION

At the picnic area, base of Waimangu Valley, south western end of Lake Rotomahana U16 087197

### DESCRIPTION

The view is framed by native vegetation in the foreground. The middle ground is made up of native vegetation down to the *waters* edge on both sides. The focal point and far distance is Mount Tarawera. A small amount of pastoral area is visible at the base of the mountain. It is a highly natural view shaft with a layered perspective *effect* and good proportions.

### THREATS

- The clearance of the native vegetation in the foreground or the middle distance
- The obstruction of the view shaft by the vegetation in the foreground
- The *development* of the highly natural setting in the view shaft
- The *development* of the sky line

### OPPORTUNITIES

- The establishment of native vegetation on the pastoral area in the far distance of the view shaft

RESPONSE

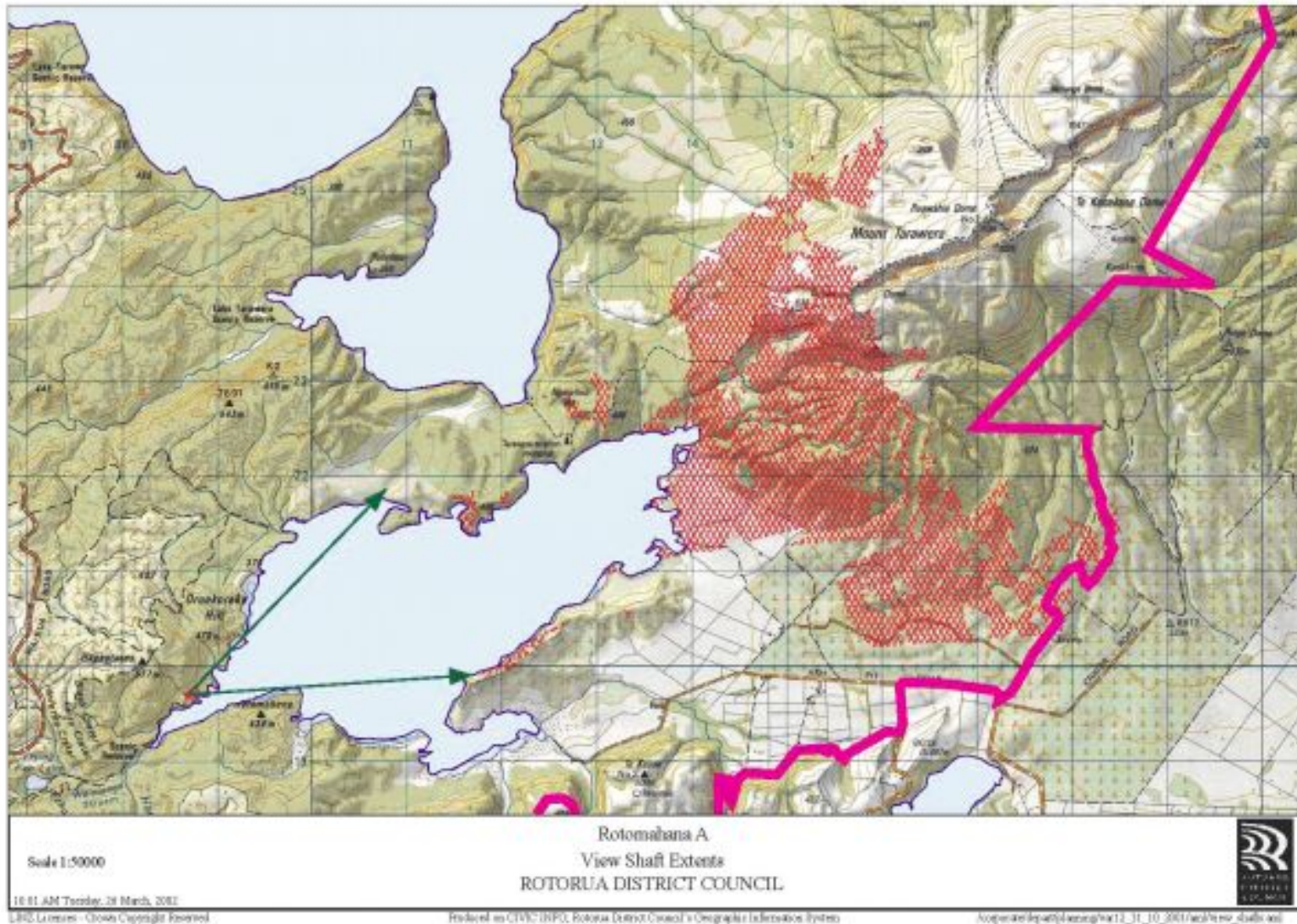
- To encourage the retention of the forested nature of the *catchment*
- To retain the high level of native vegetation in the view shaft
- To encourage the retention of Mount Tarawera as a bare landform above the current forested levels

SCORE

Score: 25







## Rotomahana B

### VIEWER LOCATION

Adjacent to the jetty, on the walk track from Lake Tarawera over the saddle to Lake Rotomahana. V16 126221

### DESCRIPTION

The view is framed by the ephemeral branches of dead Acacias, which have drowned in the rising *lake* levels. The middle distance is dominated by the *lake* and a thin strip of forested *land*. To right of the background, the peak of Maungakakamea (Rainbow Mountain) forms a weak focal point in the view shaft. Mixed *land*-uses provide a diversity of textures to the view shaft.

### THREATS

- The introduction of pastoral *land* use to the middle ground of the view shaft
- The *development* of the hills and the sky line

### OPPORTUNITIES

- Further foresting of the lower hills in the middle distance
- The establishment of riparian vegetation around the margins of the *lake*

### RESPONSE

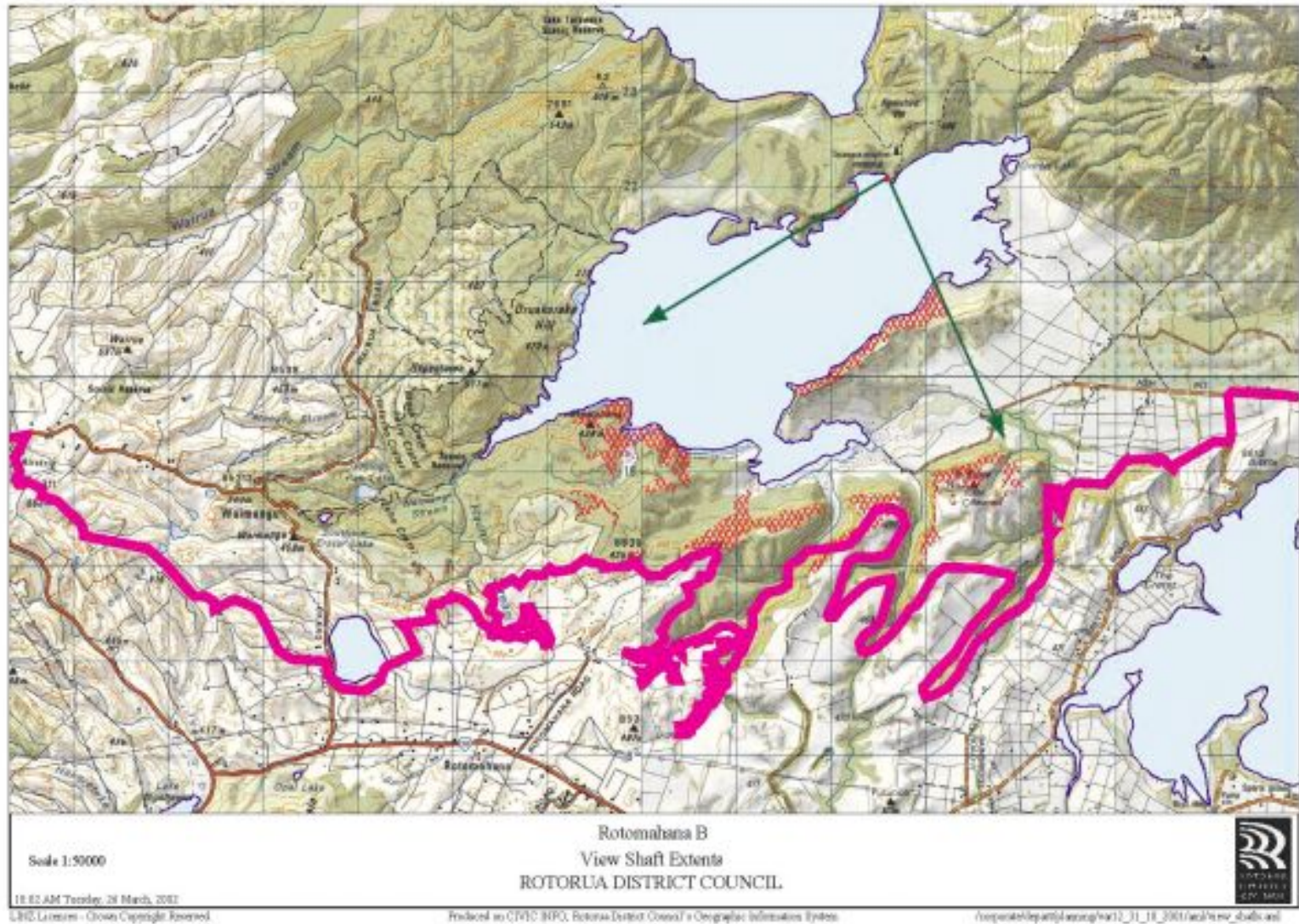
- To encourage further establishment of exotic or native forests in the *catchment*
- To protect the *catchment* from inappropriate *development*

SCORE

Score: 18









## 4.7 Tarawera

The following information sheets relate to the Lake Tarawera watershed *catchment*.

T  
A  
R  
A  
W  
E  
R  
A



## Tarawera A

### VIEWER LOCATION

Tarawera lookout, Tarawera Rd. U16 047271

### DESCRIPTION

View includes scenes of native bush and the caldera in the foreground, Lake Tarawera in the middle distance and Mount Tarawera and the Haroharo volcanic complex in the background. There is little evidence of landscape or cultural modification of this vista. A middle distance view of pine forest is visible on top of the caldera wall to the south. The view is separated into three clear layers of foreground, middle distance and background.

### THREATS

- Loss of native bush in the foreground views
- Encroachment of exotic plants/pine forests
- *Development* within the view shaft and along the ridgeline behind the Spencer Road settlement
- Near foreground vegetation disrupting view

### OPPORTUNITIES

- Enhancement of lookout facilities
- Management of foreground vegetation
- Interpretation signage



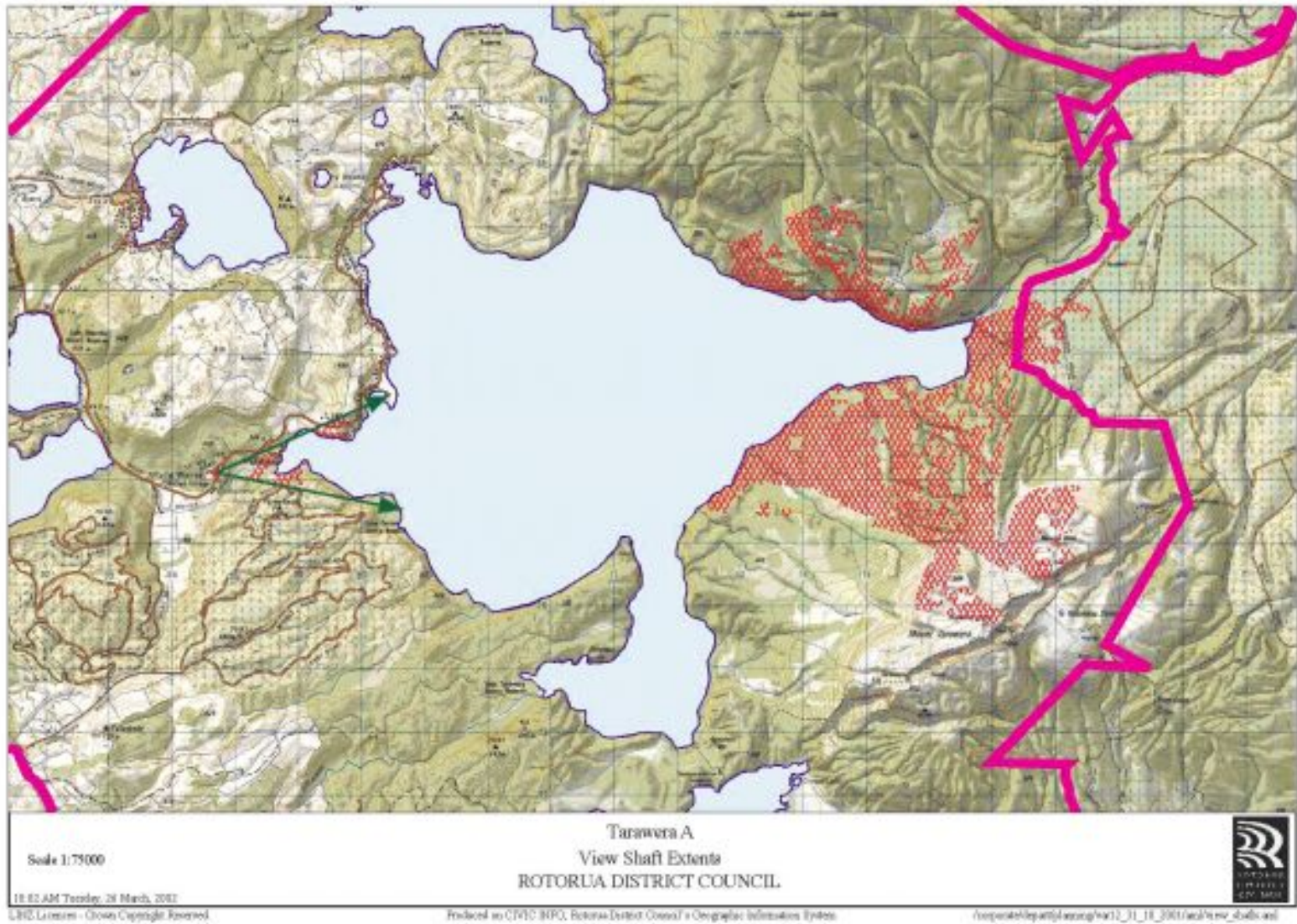
**REPOSE**

- Protection of the view shaft from native vegetation clearance
- Protection of the view shaft from exotic forestry encroachment
- Monitoring and management of the foreground vegetation to protect the view shaft
- Assessment of the view shaft for appropriate interpretation signage

**SCORE**

Score: 25





## Tarawera B

### VIEWER LOCATION

The jetty, Kotukutuku Bay (The Landing), Lake Tarawera. U16 058274

### DESCRIPTION

Kaikaria Point and Te Toroa Point frame and focus unobstructed views across the *lake* towards Mount Tarawera. The jetty in the foreground provides the only cultural intrusion into this otherwise natural view.

### THREATS

- Loss of native bush in the foreground views
- Encroachment of exotic plants/pine forests
- *Development of buildings* within the view shaft and along the ridgeline, behind the Spencer Road settlement

### OPPORTUNITIES

- Interpretation and recreational signage
- *Redevelopment of lake side* with appropriate furniture

### RESPONSE

- Protection of the view shaft from native vegetation clearance
- Protection of the view shaft from the introduction of *exotic vegetation*
- Protection from *development*, particularly on the ridgelines



SCORE

Score: 23



